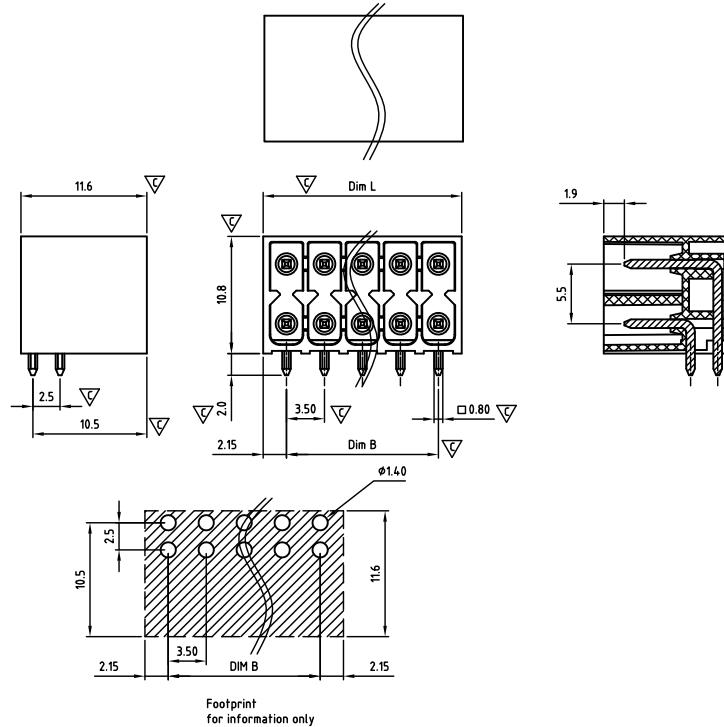




## CAHGBH350-SERIES (THR TYPE)

cULus E501953



Pitch 3,50mm

Critical dimension: ▽

Dim.L=(1/2P-1)x3.5+4.3

Dim.B=(1/2P-1)x3.5

P=Number of poles (04-48)

	Dim B	Dim L
0-30mm	+/- 0,15	+/- 0,20
over 30-60mm	+/- 0,20	+/- 0,25
over 60-90mm	+/- 0,25	+/- 0,30
over 90mm	+/- 0,30	+/- 0,40

Tolerance	
x.	+/- 0,50
x.x	+/- 0,30
x.xx	+/- 0,10
x°	+/- 1°
Units:mm	

### Technical data

Technical data in accordance with UL/CUL

	Use Group	B	C	D
Nominal voltage (V)		150	50	-
Nominal current (A)		8	8	-
Connection capacity(AWG)		-	-	-

Technical data in accordance with IEC

Rated insulation voltage at pollution degree 2 (V)		160		
Rated current/conductor cross-section (A/mm <sup>2</sup> )		8 / -		
Solid/stranded(mm <sup>2</sup> )		-		
Surge voltage category/pollution degree	III / 3	III / 2	II / 2	
Rated insulation voltage(V)	160	160	250	
Rated surge voltage(kV)	1.5	2.5	2.5	

General data

Flange nut thread		-
Flange nut tightening torque(Nm)		-
Insulation Withstanding Voltage	AC 1600 / 1min	
Insulation Resistance	1000MΩ or more at DC500V	
Using temperature range	-40°C-130°C	
Soldering temperature	260±5°C/10s	

Materials

Insulation material group	LCP I UL94 -V0
PIN	Copper, Tin plated
Flange nut	-
Borehole diameter/pin dimensions(mm)	1.4/0.8*0.8

### Packing information

Poles	Order Number	SPQ
2*2	CAHGBH350040T00	300
2*3	CAHGBH350060T00	300
2*4	CAHGBH350080T00	300
2*5	CAHGBH350100T00	300
2*6	CAHGBH350120T00	300
2*7	CAHGBH350140T00	300
2*8	CAHGBH350160T00	300
2*9	CAHGBH350180T00	300
2*10	CAHGBH350200T00	300
2*11	CAHGBH350220T00	300
2*12	CAHGBH350240T00	300
2*13	CAHGBH350260T00	300
2*14	CAHGBH350280T00	300
2*15	CAHGBH350300T00	300
2*16	CAHGBH350320T00	300
2*17	CAHGBH350340T00	300
2*18	CAHGBH350360T00	300
2*19	CAHGBH350380T00	300
2*20	CAHGBH350400T00	300
2*21	CAHGBH350420T00	300
2*22	CAHGBH350440T00	300
2*23	CAHGBH350460T00	300
2*24	CAHGBH350480T00	300

### Ordering code

CAHG BH 350 xx x Txx

① ② ③ ④ ⑤ ⑥

- ① Type
- ② Product style
- ③ Pitch
- ④ Poles (04-48)
- ⑤ Color
- ⑥ Standard T00 or Custom TXX (T & R packing)

Color

0 Black

### Key Commercial data

Custom tariff number	8536901000
Country of origin	CN (China)

### Mating with headers

CAPDSD350 Series

