

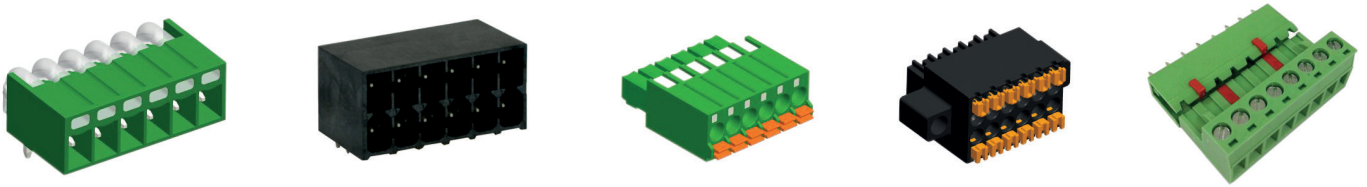
**CREATING VALUE**

**PCB SPRING-CAGE TYPE**



CREATING VALUE





## COMPANY PROFILE

Cabcon Contacts is a part of the Cabcon Group, which was founded in Copenhagen, Denmark in 2003. Cabcon Contacts are a professional manufacturer of terminal block with a "state of the art" production site in China. The focus in our ISO9001 approved factory in China is quality, lean production and competitive pricing.

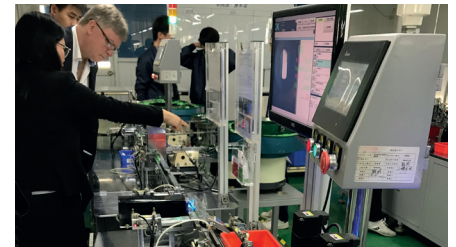
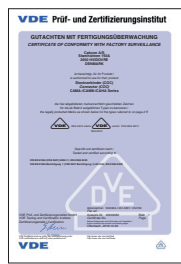
Hard investments have been made in a fully automated production line. Along the production line CCTV systems are installed to monitor and control the production line from the injection, molding, stamping and to the final packing.

To meet the customers demand we offer ink-jet printing and tampon printing and our products can be delivered in trays, boxes and/or Tape on reel.

## PRODUCT RANGE

- // Screw type plugs and headers for pluggable system
- // Screwless type plugs for pluggable system
- // PCB screw rising clamp system
- // PCB screw wire protector system
- // PCB spring-cage system
- // PCB barrier screw system
- // Special type Terminal blocks

According to international requirements, most of our products are and will be designed to meet UL and VDE regulations.



## CABCON GROUP

As experienced experts in electromechanical products and cable assemblies we support our customers and partners around the world with products, solutions and services in the industrial environment. With our motto "Creating Value" we continuously develop innovative, sustainable and useful solutions for our customers individual needs.

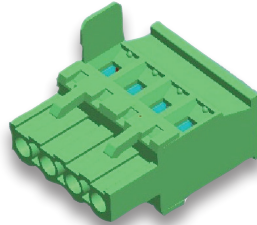
With headquarter in Denmark, divisions in Sweden, Norway and Hong Kong - we meet the customers on site. With our international sales setup, and warehouses in both Europe and Asia we create value with local presence, but global logistics.



## OUR SERVICE

### CUSTOMIZED PRODUCTS

Terminal blocks or headers for special applications can be developed at CABCON to meet the customer's requirements. Modifications of standard housing and integration of an additional wire connection within the plastic housing are possible.



### PRINTING

Terminal blocks and headers can be marked by different methods. CABCON offers its customers two kinds of printing: Ink-jet printing, the cost-effective, fast and flexible solution to print letters or individual characters. The tampon printing is also available. The Tampon print guarantees the best quality and definition. A variety of letters and characters are possible, even on corners and round surfaces. Both types of printing are wipe-proof; the tampon-printing method is also resistant to isopropyl alcohol.



### PACKING

We can pack in Tape-on-reel, Trays, Boxes. For printed circuit board assembly in automated processes. CABCON can offer terminal blocks and headers on tape-on-reel, in trays or in boxes. Dimensions and shapes are adapted to the assembly machine. Base on request the tapes/trays/boxes can be supplied in antistatic packaging for ESD protection. Terminal blocks and headers in tape-on-reel or tray packing will be delivered with pick & place pad where needed.

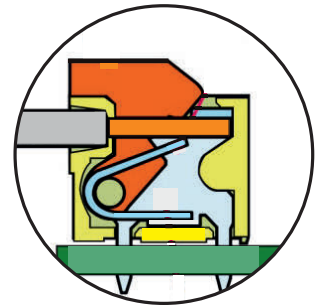


### THE CATALOGUE

We have made documentation easy to read, by using icons and keeping all relevant information's on one page. Approvals is showed in the drawing, and mating parts is mentioned where available, so it is easy to find mating options. We are trying to update the catalogue frequently for you to have latest information's available.



## THIS CATALOGUE CONTAINS PCB SPRING-CAGE



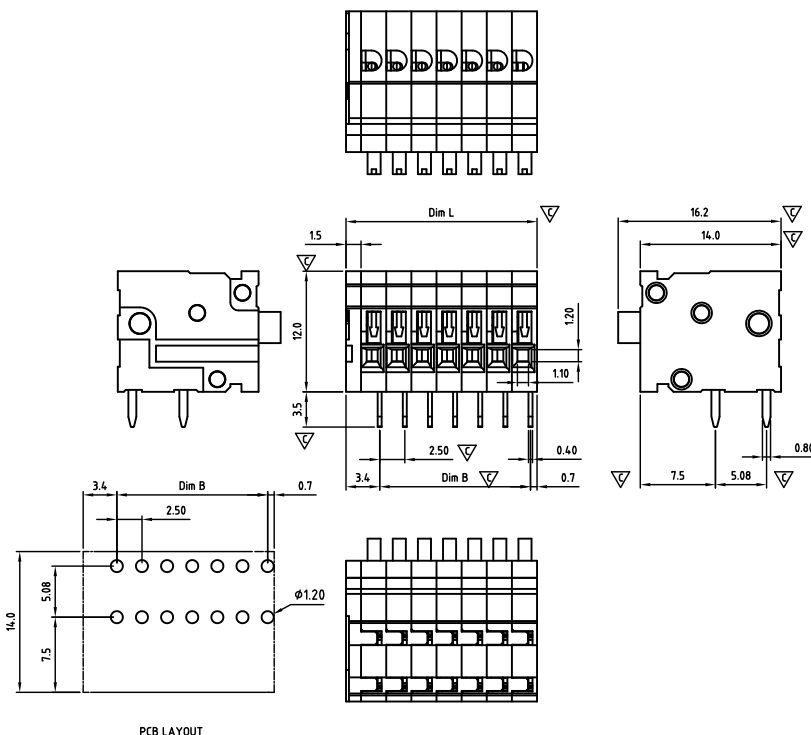
The information in this document is subject to change without further notice.





## CASDHD250-SERIES

cAUs E501953



Critical dimension: 

Dim.L=Px2.5+1.5

Dim.B=(P-1)x2.5

P=Number of poles (01-24)

	Dim B	Dim L
0-30mm	+/- 0,15	+/- 0,20
over 30-60mm	+/- 0,20	+/- 0,25
over 60-90mm	+/- 0,25	+/- 0,30
over 90mm	+/- 0,30	+/- 0,40

Tolerance	
x.	+/- 0,50
x.x	+/- 0,30
x.xx	+/- 0,10
x°	+/- 1°
Units:mm	

### Technical data

Technical data in accordance with UL/CUL

	Use Group	B	C	D
Nominal voltage (V)	150	-	-	-
Nominal current (A)	6	-	-	-
Connection capacity(AWG)	26-18	-	-	-

Technical data in accordance with IEC

Rated insulation voltage at pollution degree 2 (V)	160
Rated current/conductor cross-section (A/mm²)	4 / 0.5
Solid/stranded(mm²)	0.14-0.5 / 0.14-0.5
Surge voltage category/pollution degree	III / 3 III / 2 II / 2
Rated insulation voltage(V)	63 160 320
Rated surge voltage(kV)	2.5 2.5 2.5

### General data

Stripping length(mm)	10-11
Borehole diameter/pin dimensions(mm)	1.2/0.4*0.8

### Materials

Insulation material group	PA 66 I
Inflammability class acc.To UI94	V0
Contact	Brass, Sn plated
Wire guard	Stainless steel

### Packing information

Poles	Order Number	SPQ
2	CASDHD25002x000	500
3	CASDHD25003x000	450
4	CASDHD25004x000	400
5	CASDHD25005x000	330
6	CASDHD25006x000	290
7	CASDHD25007x000	240
8	CASDHD25008x000	215
9	CASDHD25009x000	190
10	CASDHD25010x000	165
11	CASDHD25011x000	165
12	CASDHD25012x000	140
13	CASDHD25013x000	120
14	CASDHD25014x000	120
15	CASDHD25015x000	120
16	CASDHD25016x000	95
17	CASDHD25017x000	95
18	CASDHD25018x000	95
19	CASDHD25019x000	95
20	CASDHD25020x000	70
21	CASDHD25021x000	70
22	CASDHD25022x000	70
23	CASDHD25023x000	70
24	CASDHD25024x000	70

### Ordering code

CASD HD 250 xx x xxx

① ② ③ ④ ⑤ ⑥

- Type
- Product style
- Pitch
- Poles (01-24)
- Color
- Standard 000 or Custom XXX

Color

0 Black	5 Green
1 Brown	6 Blue
2 Red	G Pale grey
3 Orange	8 Dark grey
4 Yellow	9 White

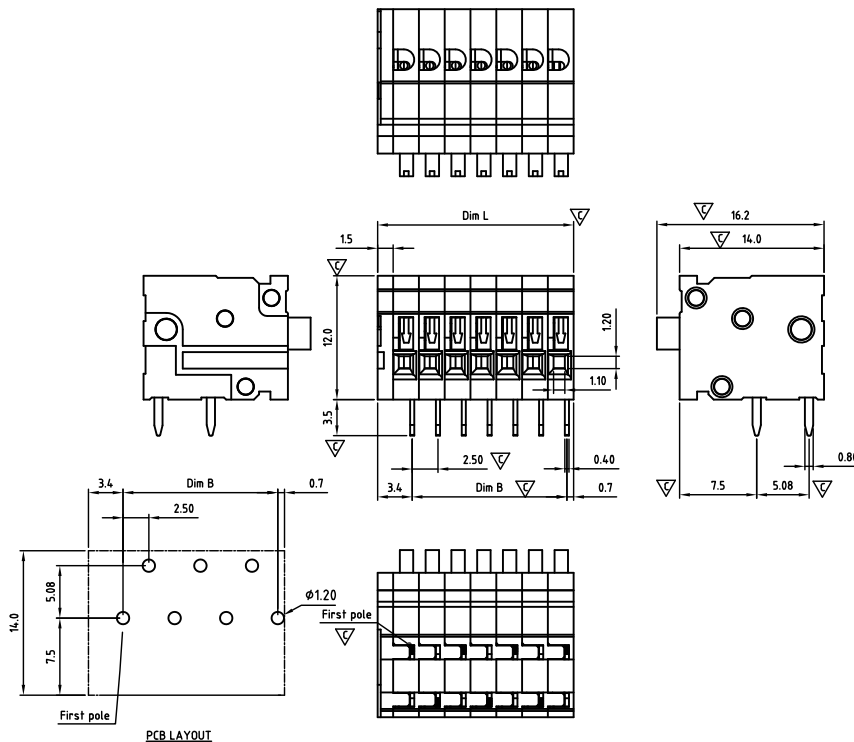
### Key Commercial data

Custom tariff number	8536901000
Country of origin	CN (China)



## CASDHZ250-SERIES

cAUs E501953



Critical dimension: ▽

Dim.L=Px2.5+1.5

Dim.B=(P-1)x2.5

P=Number of poles (01-24)

	Dim B	Dim L
0-30mm	+/- 0,15	+/- 0,20
over 30-60mm	+/- 0,20	+/- 0,25
over 60-90mm	+/- 0,25	+/- 0,30
over 90mm	+/- 0,30	+/- 0,40

Tolerance	
x.	+/- 0,50
x.x	+/- 0,30
x.xx	+/- 0,10
x°	+/- 1°
Units:mm	

### Technical data

Technical data in accordance with UL/CUL

	Use Group	B	C	D
Nominal voltage (V)	150	-	-	-
Nominal current (A)	6	-	-	-
Connection capacity(AWG)	26-18	-	-	-

Technical data in accordance with IEC

Rated insulation voltage at pollution degree 2 (V)	160
Rated current/conductor cross-section (A/mm <sup>2</sup> )	4 / 0.5
Solid/stranded(mm <sup>2</sup> )	0.14-0.5 / 0.14-0.5
Surge voltage category/pollution degree	III / 3 III / 2 II / 2
Rated insulation voltage(V)	63 160 320
Rated surge voltage(kV)	2.5 2.5 2.5

### General data

Stripping length(mm)	10-11
Borehole diameter/pin dimensions(mm)	1.2/0.4*0.8

### Materials

Insulation material group	PA 66 I
Inflammability class acc.To UI94	V0
Contact	Brass, Sn plated
Wire guard	Stainless steel

### Packing information

Poles	Order Number	SPQ
2	CASDHZ25002x000	500
3	CASDHZ25003x000	450
4	CASDHZ25004x000	400
5	CASDHZ25005x000	330
6	CASDHZ25006x000	290
7	CASDHZ25007x000	240
8	CASDHZ25008x000	215
9	CASDHZ25009x000	190
10	CASDHZ25010x000	165
11	CASDHZ25011x000	165
12	CASDHZ25012x000	140
13	CASDHZ25013x000	120
14	CASDHZ25014x000	120
15	CASDHZ25015x000	120
16	CASDHZ25016x000	95
17	CASDHZ25017x000	95
18	CASDHZ25018x000	95
19	CASDHZ25019x000	95
20	CASDHZ25020x000	70
21	CASDHZ25021x000	70
22	CASDHZ25022x000	70
23	CASDHZ25023x000	70
24	CASDHZ25024x000	70

### Ordering code

CASD HZ 250 xx x xxx

① ② ③ ④ ⑤ ⑥

- ① Type
- ② Product style
- ③ Pitch
- ④ Poles (01-24)
- ⑤ Color
- ⑥ Standard 000 or Custom XXX

Color

0 Black	5 Green
1 Brown	6 Blue
2 Red	7 Pale grey
3 Orange	8 Dark grey
4 Yellow	9 White

### Key Commercial data

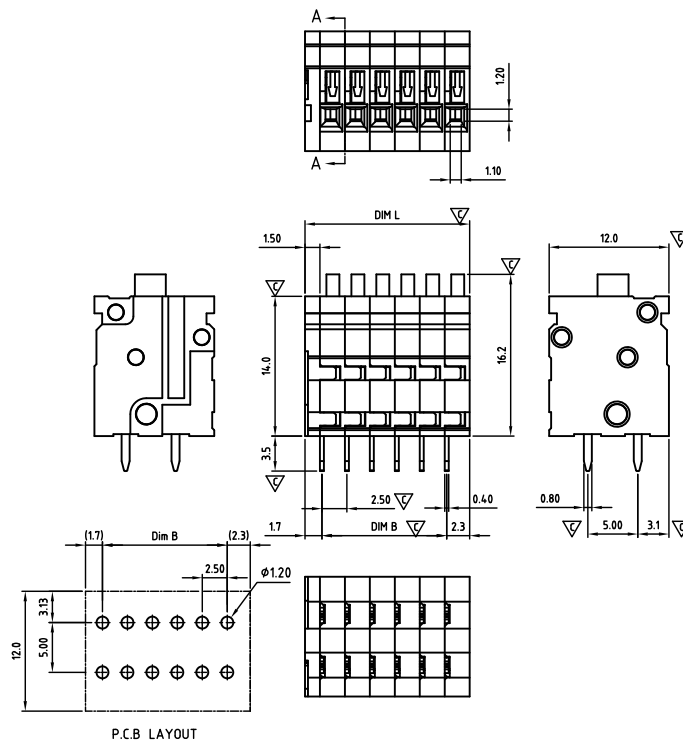
Custom tariff number	8536901000
Country of origin	CN (China)





## CASDVD250-SERIES

**cAlus** E501953



Critical dimension: ▽

Dim.L=Px2.5+1.5

Dim.B=(P-1)x2.5

P=Number of poles (01-24)

	Dim B	Dim L
0-30mm	+/- 0,15	+/- 0,20
over 30-60mm	+/- 0,20	+/- 0,25
over 60-90mm	+/- 0,25	+/- 0,30
over 90mm	+/- 0,30	+/- 0,40

### Technical data

Technical data in accordance with UL/CUL

	Use Group	B	C	D
Nominal voltage (V)	150	-	-	-
Nominal current (A)	6	-	-	-
Connection capacity(AWG)	26-18	-	-	-

Technical data in accordance with IEC

Rated insulation voltage at pollution degree 2 (V)	160
Rated current/conductor cross-section (A/mm <sup>2</sup> )	4 / 0.5
Solid/stranded(mm <sup>2</sup> )	0.14-0.5 / 0.14-0.5
Surge voltage category/pollution degree	III / 3 III / 2 II / 2
Rated insulation voltage(V)	63 160 320
Rated surge voltage(kV)	2.5 2.5 2.5

### General data

Stripping length(mm)	10-11
Borehole diameter/pin dimensions(mm)	1.2/0.4*0.8

### Materials

Insulation material group	PA 66 I
Inflammability class acc.To UI94	V0
Contact	Brass, Sn plated
Wire guard	Stainless steel

### Packing information

Poles	Order Number	SPQ
2	CASDVD25002x000	500
3	CASDVD25003x000	420
4	CASDVD25004x000	360
5	CASDVD25005x000	320
6	CASDVD25006x000	285
7	CASDVD25007x000	240
8	CASDVD25008x000	215
9	CASDVD25009x000	190
10	CASDVD25010x000	165
11	CASDVD25011x000	165
12	CASDVD25012x000	140
13	CASDVD25013x000	120
14	CASDVD25014x000	120
15	CASDVD25015x000	120
16	CASDVD25016x000	95
17	CASDVD25017x000	95
18	CASDVD25018x000	95
19	CASDVD25019x000	95
20	CASDVD25020x000	70
21	CASDVD25021x000	70
22	CASDVD25022x000	70
23	CASDVD25023x000	70
24	CASDVD25024x000	70

### Ordering code

**CASD VD 250 xx x xxx**

① ② ③ ④ ⑤ ⑥

- ① Type
- ② Product style
- ③ Pitch
- ④ Poles (01-24)
- ⑤ Color
- ⑥ Standard 000 or Custom XXX

Color

0 Black	5 Green
1 Brown	6 Blue
2 Red	G Pale grey
3 Orange	8 Dark grey
4 Yellow	9 White

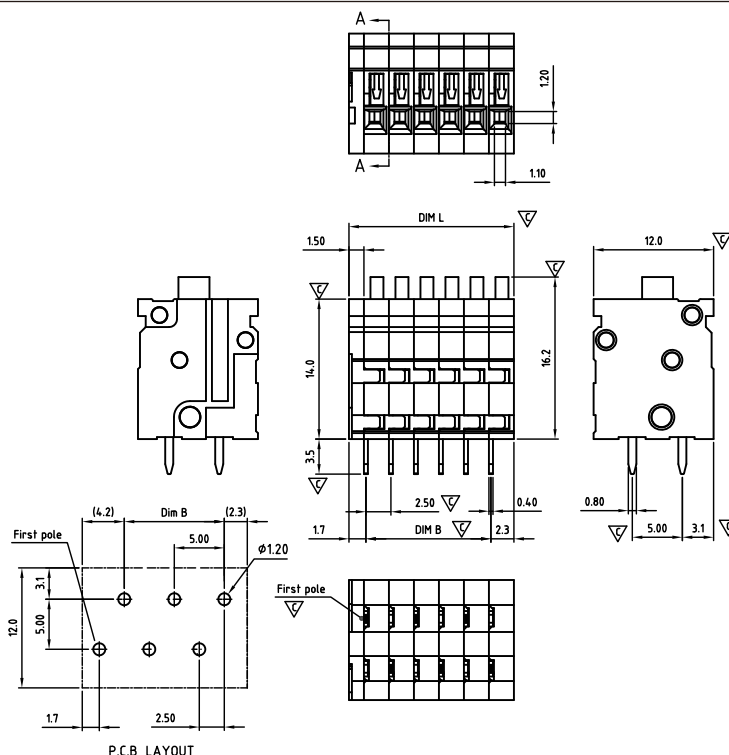
### Key Commercial data

Custom tariff number	8536901000
Country of origin	CN (China)



## CASDVZ250-SERIES

cAUs E501953



Critical dimension: ▽

Dim.L=Px2.5+1.5

Dim.B=(P-1)x2.5

P=Number of poles (01-24)

	Dim B	Dim L
0-30mm	+/- 0,15	+/- 0,20
over 30-60mm	+/- 0,20	+/- 0,25
over 60-90mm	+/- 0,25	+/- 0,30
over 90mm	+/- 0,30	+/- 0,40

Tolerance	
x.	+/- 0,50
x.x	+/- 0,30
x.xx	+/- 0,10
x°	+/- 1°
Units:mm	

### Technical data

Technical data in accordance with UL/CUL

	Use Group	B	C	D
Nominal voltage (V)	150	-	-	-
Nominal current (A)	6	-	-	-
Connection capacity(AWG)	26-18	-	-	-

Technical data in accordance with IEC

Rated insulation voltage at pollution degree 2 (V)	160
Rated current/conductor cross-section (A/mm²)	4 / 0.5
Solid/stranded(mm²)	0.14-0.5 / 0.14-0.5
Surge voltage category/pollution degree	III / 3 III / 2 II / 2
Rated insulation voltage(V)	63 160 320
Rated surge voltage(kV)	2.5 2.5 2.5

### General data

Stripping length(mm)	10-11
Borehole diameter/pin dimensions(mm)	1.2/0.4*0.8

### Materials

Insulation material group	PA 66 I
Inflammability class acc.To UI94	V0
Contact	Brass, Sn plated
Wire guard	Stainless steel

### Packing information

Poles	Order Number	SPQ
2	CASDVZ25002x000	500
3	CASDVZ25003x000	420
4	CASDVZ25004x000	360
5	CASDVZ25005x000	320
6	CASDVZ25006x000	285
7	CASDVZ25007x000	240
8	CASDVZ25008x000	215
9	CASDVZ25009x000	190
10	CASDVZ25010x000	165
11	CASDVZ25011x000	165
12	CASDVZ25012x000	140
13	CASDVZ25013x000	120
14	CASDVZ25014x000	120
15	CASDVZ25015x000	120
16	CASDVZ25016x000	95
17	CASDVZ25017x000	95
18	CASDVZ25018x000	95
19	CASDVZ25019x000	95
20	CASDVZ25020x000	70
21	CASDVZ25021x000	70
22	CASDVZ25022x000	70
23	CASDVZ25023x000	70
24	CASDVZ25024x000	70

### Ordering code

CASDVZ 250 xx x xxx

① ② ③ ④ ⑤ ⑥

- ① Type
- ② Product style
- ③ Pitch
- ④ Poles (01-24)
- ⑤ Color
- ⑥ Standard 000 or Custom XXX

Color

0 Black	5 Green
1 Brown	6 Blue
2 Red	G Pale grey
3 Orange	8 Dark grey
4 Yellow	9 White

### Key Commercial data

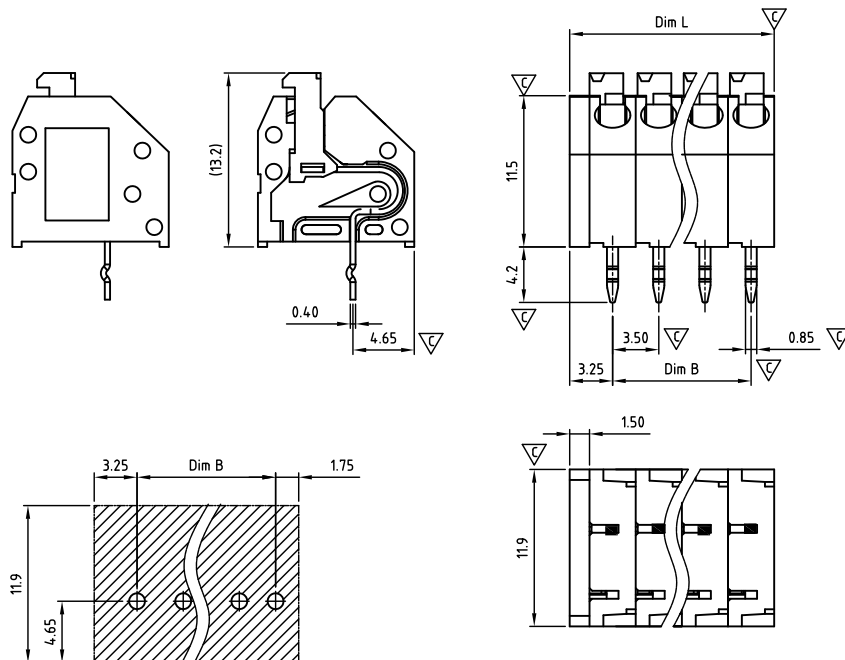
Custom tariff number	8536901000
Country of origin	CN (China)





## CASCAF350-SERIES

**cAUs** E501953



Critical dimension:  $\nabla$

Dim.L=Px3.5+1.5

Dim.B=(P-1)x3.5

P=Number of poles (01-24)

	Dim B	Dim L
0-30mm	+/- 0,15	+/- 0,20
over 30-60mm	+/- 0,20	+/- 0,25
over 60-90mm	+/- 0,25	+/- 0,30
over 90mm	+/- 0,30	+/- 0,40

PCB LAYOUT

Tolerance	
x.	+/- 0,50
x.x	+/- 0,30
x.xx	+/- 0,10
x°	+/- 1°



Units:mm

### Technical data

Technical data in accordance with UL/CUL

	Use Group	B	C	D
Nominal voltage (V)		300	-	300
Nominal current (A)		5.5	-	5.5
Connection capacity(AWG)		22-16	-	22-16

Technical data in accordance with IEC

Rated insulation voltage at pollution degree 2 (V)	400		
Rated current/conductor cross-section (A/mm <sup>2</sup> )	6 / 1.5		
Solid/stranded(mm <sup>2</sup> )	0.5-1.5/0.5-1.5		
Surge voltage category/pollution degree	III / 3	III / 2	II / 2
Rated insulation voltage(V)	250	400	630
Rated surge voltage(kV)	4	4	4

### General data

Stripping length(mm)	9-10
Borehole diameter/pin dimensions(mm)	1.2/0.4*0.8

### Materials

Insulation material group	PA 66 I
Inflammability class acc.To UI94	V0
Contact	Brass, Sn plated

### Packing information

Poles	Order Number	SPQ
1	CASCAF35001x000	750
2	CASCAF35002x000	730
3	CASCAF35003x000	520
4	CASCAF35004x000	380
5	CASCAF35005x000	320
6	CASCAF35006x000	260
7	CASCAF35007x000	240
8	CASCAF35008x000	205
9	CASCAF35009x000	170
10	CASCAF35010x000	160
11	CASCAF35011x000	140
12	CASCAF35012x000	130
13	CASCAF35013x000	120
14	CASCAF35014x000	120
15	CASCAF35015x000	120
16	CASCAF35016x000	100
17	CASCAF35017x000	100
18	CASCAF35018x000	100
19	CASCAF35019x000	70
20	CASCAF35020x000	70
21	CASCAF35021x000	70
22	CASCAF35022x000	70
23	CASCAF35023x000	70
24	CASCAF35024x000	70

### Ordering code

**CASC AF 350 xx x xxx**

① ② ③ ④ ⑤ ⑥

- ① Type
- ② Product style
- ③ Pitch
- ④ Poles (01-24)
- ⑤ Color
- ⑥ Standard 000 or Custom XXX

Color

0 Black	5 Green
1 Brown	6 Blue
2 Red	G Pale grey
3 Orange	8 Dark grey
4 Yellow	9 White

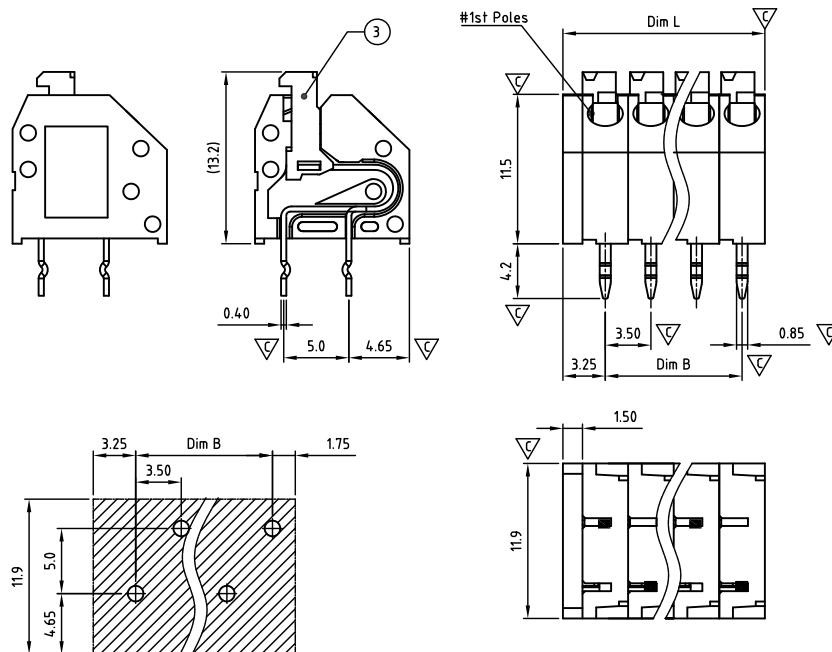
### Key Commercial data

Custom tariff number	8536901000
Country of origin	CN (China)



## CASCAZ350-SERIES

cAUs E501953



Critical dimension:  $\nabla$

Dim.L=Px3.5+1.5

Dim.B=(P-1)x3.5

P=Number of poles (01-24)

	Dim B	Dim L
0-30mm	+/- 0,15	+/- 0,20
over 30-60mm	+/- 0,20	+/- 0,25
over 60-90mm	+/- 0,25	+/- 0,30
over 90mm	+/- 0,30	+/- 0,40

PCB LAYOUT

Tolerance	
x.	+/- 0,50
x.x	+/- 0,30
x.xx	+/- 0,10
x°	+/- 1°
Units:mm	

### Technical data

Technical data in accordance with UL/CUL

	Use Group	B	C	D
Nominal voltage (V)		300	-	300
Nominal current (A)		5.5	-	5.5
Connection capacity(AWG)		22-16	-	22-16

Technical data in accordance with IEC

Rated insulation voltage at pollution degree 2 (V)	400		
Rated current/conductor cross-section (A/mm <sup>2</sup> )	6 / 1.5		
Solid/stranded(mm <sup>2</sup> )	0.5-1.5/0.5-1.5		
Surge voltage category/pollution degree	III / 3	III / 2	II / 2
Rated insulation voltage(V)	250	400	630
Rated surge voltage(kV)	4	4	4

### General data

Stripping length(mm)	9-10
Borehole diameter/pin dimensions(mm)	1.2/0.4*0.8

### Materials

Insulation material group	PA 66 I
Inflammability class acc.To UI94	V0
Contact	Brass, Sn plated

### Packing information

Poles	Order Number	SPQ
1	CASCAZ35001x000	750
2	CASCAZ35002x000	730
3	CASCAZ35003x000	520
4	CASCAZ35004x000	380
5	CASCAZ35005x000	320
6	CASCAZ35006x000	260
7	CASCAZ35007x000	240
8	CASCAZ35008x000	205
9	CASCAZ35009x000	170
10	CASCAZ35010x000	160
11	CASCAZ35011x000	140
12	CASCAZ35012x000	130
13	CASCAZ35013x000	120
14	CASCAZ35014x000	120
15	CASCAZ35015x000	120
16	CASCAZ35016x000	100
17	CASCAZ35017x000	100
18	CASCAZ35018x000	100
19	CASCAZ35019x000	70
20	CASCAZ35020x000	70
21	CASCAZ35021x000	70
22	CASCAZ35022x000	70
23	CASCAZ35023x000	70
24	CASCAZ35024x000	70

### Ordering code

CASC AZ 350 xx x xxx

① ② ③ ④ ⑤ ⑥

- ① Type
- ② Product style
- ③ Pitch
- ④ Poles (01-24)
- ⑤ Color
- ⑥ Standard 000 or Custom XXX

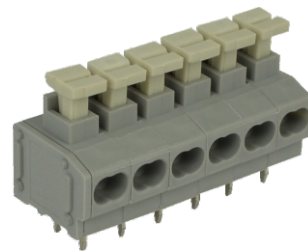
Color

0 Black	5 Green
1 Brown	6 Blue
2 Red	G Pale grey
3 Orange	8 Dark grey
4 Yellow	9 White

### Key Commercial data

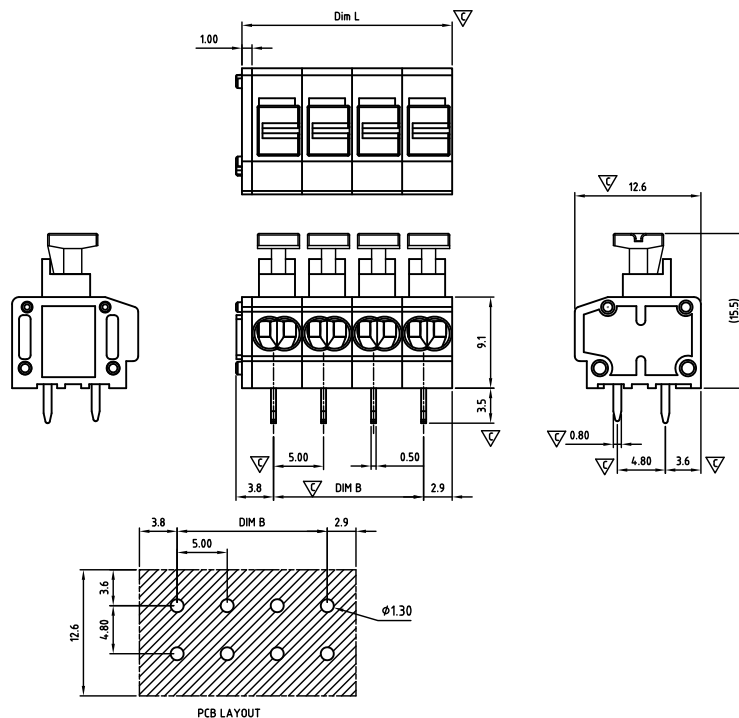
Custom tariff number	8536901000
Country of origin	CN (China)





## CASBDA500-SERIES

cAlus E501953



Critical dimension: ▽

Dim.L=Px5.0+1.0

Dim.B=(P-1)x5.0

P=Number of poles (01-24)

	Dim B	Dim L
0-30mm	+/- 0,15	+/- 0,20
over 30-60mm	+/- 0,20	+/- 0,25
over 60-90mm	+/- 0,25	+/- 0,30
over 90mm	+/- 0,30	+/- 0,40

Tolerance	
x.	+/- 0,50
x.x	+/- 0,30
x.xx	+/- 0,10
x°	+/-1°
Units:mm	

### Technical data

Technical data in accordance with UL/CUL

	Use Group	B	C	D
Nominal voltage (V)		300	-	300
Nominal current (A)		10	-	10
Connection capacity(AWG)		2*24-18	-	2*24-18

Technical data in accordance with IEC

Rated insulation voltage at pollution degree 2 (V)	320		
Rated current/conductor cross-section (A/mm²)	10 / 2.5		
Solid/stranded(mm²)	0.5-2.5/0.5-1.5		
Surge voltage category/pollution degree	III / 3	III / 2	II / 2
Rated insulation voltage(V)	250	320	630
Rated surge voltage(kV)	4	4	4

### General data

Stripping length(mm)	9-10
Borehole diameter/pin dimensions(mm)	1.3/0.5*0.8

### Materials

Insulation material group	PA 66 I
Inflammability class acc.To UI94	V0
Contact	Brass, Sn plated
Wire guard	Stainless steel

### Packing information

Poles	Order Number	SPQ
2	CASBDA50002x000	360
3	CASBDA50003x000	252
4	CASBDA50004x000	180
5	CASBDA50005x000	144
6	CASBDA50006x000	108
7	CASBDA50007x000	108
8	CASBDA50008x000	75
9	CASBDA50009x000	75
10	CASBDA50010x000	75
11	CASBDA50011x000	72
12	CASBDA50012x000	63
13	CASBDA50013x000	42
14	CASBDA50014x000	42
15	CASBDA50015x000	42
16	CASBDA50016x000	42
17	CASBDA50017x000	42
18	CASBDA50018x000	42
19	CASBDA50019x000	42
20	CASBDA50020x000	36
21	CASBDA50021x000	36
22	CASBDA50022x000	36
23	CASBDA50023x000	36
24	CASBDA50024x000	36

### Ordering code

CASB DA 500 xx x xxx

① ② ③ ④ ⑤ ⑥

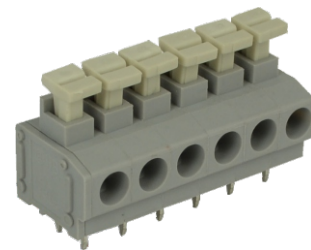
- ① Type
- ② Product style
- ③ Pitch
- ④ Poles (01-24)
- ⑤ Color
- ⑥ Standard 000 or Custom XXX

Color

0 Black	5 Green
1 Brown	6 Blue
2 Red	7 Pale grey
3 Orange	8 Dark grey
4 Yellow	9 White

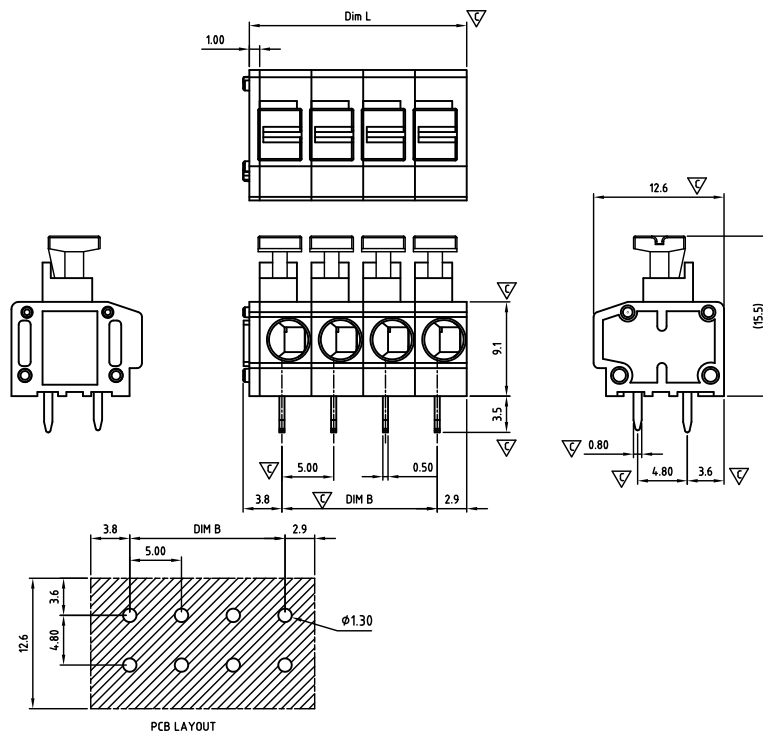
### Key Commercial data

Custom tariff number	8536901000
Country of origin	CN (China)



## CASBSA500-SERIES

cAUs E501953



Critical dimension:  $\nabla$

Dim.L=Px5.0+1.0

Dim.B=(P-1)x5.0

P=Number of poles (01-24)

	Dim B	Dim L
0-30mm	+/- 0,15	+/- 0,20
over 30-60mm	+/- 0,20	+/- 0,25
over 60-90mm	+/- 0,25	+/- 0,30
over 90mm	+/- 0,30	+/- 0,40

Tolerance	
x.	+/- 0,50
x.x	+/- 0,30
x.xx	+/- 0,10
x°	+/- 1°
Units:mm	

### Technical data

Technical data in accordance with UL/CUL

	Use Group	B	C	D
Nominal voltage (V)		300	-	300
Nominal current (A)		10	-	10
Connection capacity(AWG)		20-14	-	20-14

Technical data in accordance with IEC

Rated insulation voltage at pollution degree 2 (V)	320		
Rated current/conductor cross-section (A/mm <sup>2</sup> )	10 / 2.5		
Solid/stranded(mm <sup>2</sup> )	0.5-2.5/0.5-1.5		
Surge voltage category/pollution degree	III / 3	III / 2	II / 2
Rated insulation voltage(V)	250	320	630
Rated surge voltage(kV)	4	4	4

### General data

Stripping length(mm)	9-10
Borehole diameter/pin dimensions(mm)	1.3/0.5*0.8

### Materials

Insulation material group	PA 66 I
Inflammability class acc.To UI94	V0
Contact	Brass, Sn plated
Wire guard	Stainless steel

### Packing information

Poles	Order Number	SPQ
2	CASBSA50002x000	360
3	CASBSA50003x000	252
4	CASBSA50004x000	180
5	CASBSA50005x000	144
6	CASBSA50006x000	108
7	CASBSA50007x000	108
8	CASBSA50008x000	75
9	CASBSA50009x000	75
10	CASBSA50010x000	75
11	CASBSA50011x000	72
12	CASBSA50012x000	63
13	CASBSA50013x000	42
14	CASBSA50014x000	42
15	CASBSA50015x000	42
16	CASBSA50016x000	42
17	CASBSA50017x000	42
18	CASBSA50018x000	42
19	CASBSA50019x000	42
20	CASBSA50020x000	36
21	CASBSA50021x000	36
22	CASBSA50022x000	36
23	CASBSA50023x000	36
24	CASBSA50024x000	36

### Ordering code

CASB SA 500 xx x xxx

① ② ③ ④ ⑤ ⑥

- ① Type
- ② Product style
- ③ Pitch
- ④ Poles (01-24)
- ⑤ Color
- ⑥ Standard 000 or Custom XXX

Color

0 Black	5 Green
1 Brown	6 Blue
2 Red	G Pale grey
3 Orange	8 Dark grey
4 Yellow	9 White

### Key Commercial data

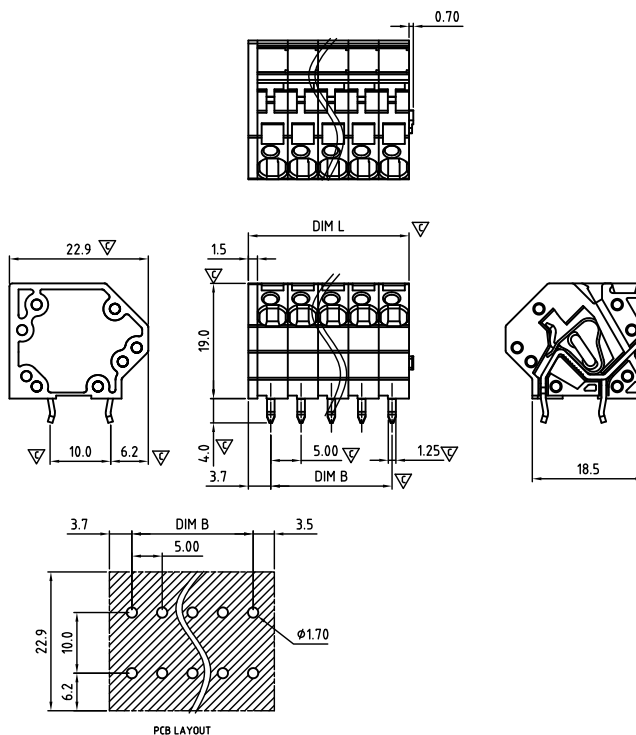
Custom tariff number	8536901000
Country of origin	CN (China)





## CASFAM500-SERIES

**cAlus** E501953



Critical dimension:  $\nabla$

Dim.L=Px5.0+1.5

Dim.B=(P-1)x5.0

P=Number of poles (01-24)

	Dim B	Dim L
0-30mm	+/- 0,15	+/- 0,20
over 30-60mm	+/- 0,20	+/- 0,25
over 60-90mm	+/- 0,25	+/- 0,30
over 90mm	+/- 0,30	+/- 0,40

Tolerance	
x.	+/- 0,50
x.x	+/- 0,30
x.xx	+/- 0,10
x°	+/- 1°

Units:mm

### Technical data

Technical data in accordance with UL/CUL

	Use Group	B	C	D
Nominal voltage (V)	300	-	300	
Nominal current (A)	15	-	10	
Connection capacity(AWG)	28-12	-	28-12	

Technical data in accordance with IEC

Rated insulation voltage at pollution degree 2 (V)	320		
Rated current/conductor cross-section (A/mm <sup>2</sup> )	32 / 4		
Solid/stranded(mm <sup>2</sup> )	0.08-4/0.08-4		
Surge voltage category/pollution degree	III / 3	III / 2	II / 2
Rated insulation voltage(V)	320	320	630
Rated surge voltage(kV)	4	4	4

General data

Stripping length(mm)	8-9
Borehole diameter/pin dimensions(mm)	1.7/0.8*1.2

Materials

Insulation material group	PA 66 I
Inflammability class acc.To UI94	V0
Contact	Copper, Sn plated
Wire guard	Stainless steel

### Packing information

Poles	Order Number	SPQ
1	CASFAM50001x000	250
2	CASFAM50002x000	180
3	CASFAM50003x000	140
4	CASFAM50004x000	105
5	CASFAM50005x000	80
6	CASFAM50006x000	70
7	CASFAM50007x000	60
8	CASFAM50008x000	60
9	CASFAM50009x000	45
10	CASFAM50010x000	40
11	CASFAM50011x000	40
12	CASFAM50012x000	40
13	CASFAM50013x000	35
14	CASFAM50014x000	35
15	CASFAM50015x000	35
16	CASFAM50016x000	35
17	CASFAM50017x000	35
18	CASFAM50018x000	20
19	CASFAM50019x000	20
20	CASFAM50020x000	20
21	CASFAM50021x000	20
22	CASFAM50022x000	20
23	CASFAM50023x000	20
24	CASFAM50024x000	20

### Ordering code

**CASFAM 500 xx x xxx**

① ② ③ ④ ⑤ ⑥

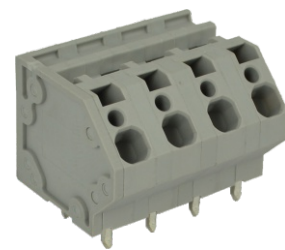
- ① Type
- ② Product style
- ③ Pitch
- ④ Poles (01-24)
- ⑤ Color
- ⑥ Standard 000 or Custom XXX

Color

0 Black	5 Green
1 Brown	6 Blue
2 Red	G Pale grey
3 Orange	8 Dark grey
4 Yellow	9 White

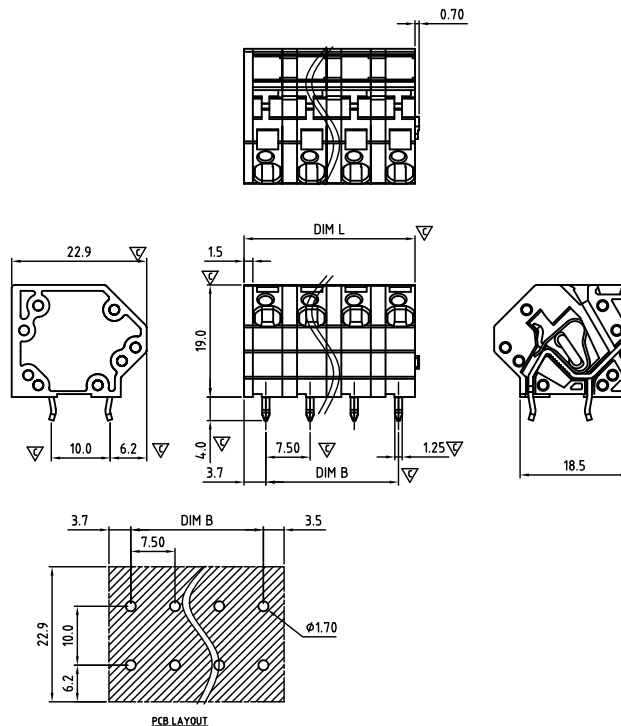
### Key Commercial data

Custom tariff number	8536901000
Country of origin	CN (China)



## CASFAM750-SERIES

cAlus E501953



Critical dimension:  $\nabla$

Dim.L=(P-1)x7.5+6.5

Dim.B=(P-1)x7.5

P=Number of poles (01-16)

	Dim B	Dim L
0-30mm	+/- 0,15	+/- 0,20
over 30-60mm	+/- 0,20	+/- 0,25
over 60-90mm	+/- 0,25	+/- 0,30
over 90mm	+/- 0,30	+/- 0,40

PCB LAYOUT

Tolerance	
x.	+/- 0,50
x.x	+/- 0,30
x.xx	+/- 0,10
x°	+/- 1°
Units:mm	

### Technical data

Technical data in accordance with UL/CUL

	Use Group	B	C	D
Nominal voltage (V)		300	150	300
Nominal current (A)		15	15	10
Connection capacity(AWG)		28-12	28-12	28-12

Technical data in accordance with IEC

Rated insulation voltage at pollution degree 2 (V)	630		
Rated current/conductor cross-section (A/mm <sup>2</sup> )	32 / 4		
Solid/stranded(mm <sup>2</sup> )	0.08-4/0.08-4		
Surge voltage category/pollution degree	III / 3	III / 2	II / 2
Rated insulation voltage(V)	500	630	1000
Rated surge voltage(kV)	6	6	6

### General data

Stripping length(mm)	8-9
Borehole diameter/pin dimensions(mm)	1.7/0.8*1.2

### Materials

Insulation material group	PA 66 I
Inflammability class acc.To UI94	V0
Contact	Copper, Sn plated
Wire guard	Stainless steel

### Packing information

Poles	Order Number	SPQ
1	CASFAM75001x000	200
2	CASFAM75002x000	150
3	CASFAM75003x000	120
4	CASFAM75004x000	95
5	CASFAM75005x000	80
6	CASFAM75006x000	60
7	CASFAM75007x000	50
8	CASFAM75008x000	50
9	CASFAM75009x000	30
10	CASFAM75010x000	30
11	CASFAM75011x000	30
12	CASFAM75012x000	30
13	CASFAM75013x000	30
14	CASFAM75014x000	25
15	CASFAM75015x000	25
16	CASFAM75016x000	25

### Ordering code

CASFAM 750 xx x xxx

① ② ③ ④ ⑤ ⑥

- ① Type
- ② Product style
- ③ Pitch
- ④ Poles (01-16)
- ⑤ Color
- ⑥ Standard 000 or Custom XXX

Color

0 Black	5 Green
1 Brown	6 Blue
2 Red	G Pale grey
3 Orange	8 Dark grey
4 Yellow	9 White

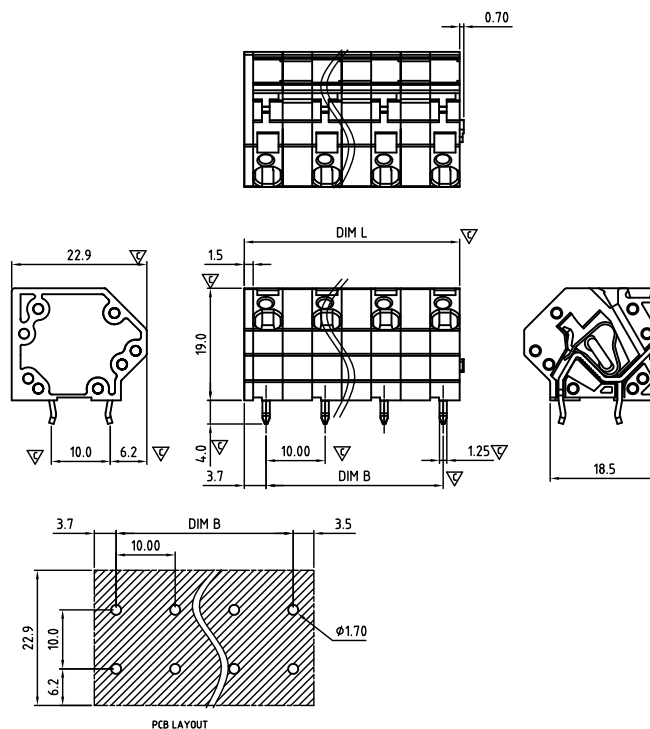
### Key Commercial data

Custom tariff number	8536901000
Country of origin	CN (China)



## CASFAM100-SERIES

cAlus E501953



Critical dimension: ▽

Dim.L=(P-1)x10.0+6.5

Dim.B=(P-1)x10.0

P=Number of poles (01-10)

	Dim B	Dim L
0-30mm	+/- 0,15	+/- 0,20
over 30-60mm	+/- 0,20	+/- 0,25
over 60-90mm	+/- 0,25	+/- 0,30
over 90mm	+/- 0,30	+/- 0,40

Tolerance	
x.	+/- 0,50
x.x	+/- 0,30
x.xx	+/- 0,10
x°	+/- 1°

Units:mm

### Technical data

Technical data in accordance with UL/CUL

	Use Group	B	C	D
Nominal voltage (V)		300	300	600
Nominal current (A)		15	15	5
Connection capacity(AWG)		28-12	28-12	28-12

Technical data in accordance with IEC

Rated insulation voltage at pollution degree 2 (V)	800		
Rated current/conductor cross-section (A/mm <sup>2</sup> )	32 / 4		
Solid/stranded(mm <sup>2</sup> )	0.08-4/0.08-4		
Surge voltage category/pollution degree	III / 3	III / 2	II / 2
Rated insulation voltage(V)	800	800	1000
Rated surge voltage(kV)	8	8	8

### General data

Stripping length(mm)	8-9
Borehole diameter/pin dimensions(mm)	1.7/0.8*1.2

### Materials

Insulation material group	PA 66 I
Inflammability class acc.To UI94	V0
Contact	Copper, Sn plated
Wire guard	Stainless steel

### Packing information

Poles	Order Number	SPQ
1	CASFAM50001x000	180
2	CASFAM50002x000	140
3	CASFAM50003x000	105
4	CASFAM50004x000	80
5	CASFAM50005x000	60
6	CASFAM50006x000	60
7	CASFAM50007x000	45
8	CASFAM50008x000	45
9	CASFAM50009x000	30
10	CASFAM50010x000	30

### Ordering code

CASF AM 100 xx x xxx

① ② ③ ④ ⑤ ⑥

- ① Type
- ② Product style
- ③ Pitch
- ④ Poles (01-10)
- ⑤ Color
- ⑥ Standard 000 or Custom XXX

Color

0 Black	5 Green
1 Brown	6 Blue
2 Red	G Pale grey
3 Orange	8 Dark grey
4 Yellow	9 White

### Key Commercial data

Custom tariff number	8536901000
Country of origin	CN (China)

## TERMINAL BLOCKS

### COLOR SIMILAR TO RAL XXX



#### BLACK

Similar to RAL9005



#### BROWN

Similar to RAL8017



#### RED

Similar to RAL3001



#### ORANGE

Similar to RAL2011



#### GREEN

Similar to RAL6018/K



#### LIGHT GREEN

Similar to RAL6018/U



#### BLUE

Similar to RAL5015



#### LIGHT GREY

Similar to RAL7035



#### DARK GREY

Similar to RAL7004



#### YELLOW

Similar to RAL1018



#### WHITE

Similar to RAL1102



#### YELOW-GREEN

Applied to earth terminal

### COLORS AND MARKING

We have many sets of high precision injecting machine. All the machines can process a variety of high precision injecting products, in order to meet all kinds of components and customer's needs. Also, our factory is using concentrated dry feeding system and automatic suction machine, so that the machines can supply material automatically. We only need one person to run this production line, which is the best part of

our precision injecting machines. Furthermore, we do make special features in the plastic housing to prevent mismatching, increase creeping distance or prevent PCB parts to have wrong orientation. In addition to this we do special marking and even special color if needed.

Terminal blocks and headers can be marked by different methods. We offer our customers two kinds

of printing: ink-jet printing, the cost-effective, fast and flexible solution to print letters or individual characters. The tampon printing is also available. The Tampon print guarantees the best quality and definition. A variety of letters and characters are possible, even on corners and round surfaces. Both types of printing are wipe-proof; the tampon-printing method is also resistant to isopropyl alcohol.



## AUTOMATED ASSEMBLY

According to the different characteristics of products, we have divided our assembly production line into two:

automated assembly line and manual assembly line. Our professional engineers not only have the ability to design the labor power into the automated assembly system, but also are able to develop and improve the automated assembly machines, as well as defective product detecting system.

Hence we can ensure the quality of product also improve the productivity. Recent years, in order to reduce the production costs and improve market competitiveness, CABCON has reduced the cost in manual production and focused

on the development of automation equipment, to ensure product quality and production capacity. Production efficiency will lead the delivery time become more accurate.

## INJECTION MOLDING

Right now CABCON has many sets of high precision injecting machine. All the machines are able to process a variety of high precision injecting products, in order to meet all kinds of components and OEM / ODM customer's needs. Also our factory is using concentrated dry feeding system and automatic suction machine, so that the machines can supply material automatically. CABCON only needs one person to run this production line, which is the best part of our precision injecting machines.

## SCREW AND METAL CAGE

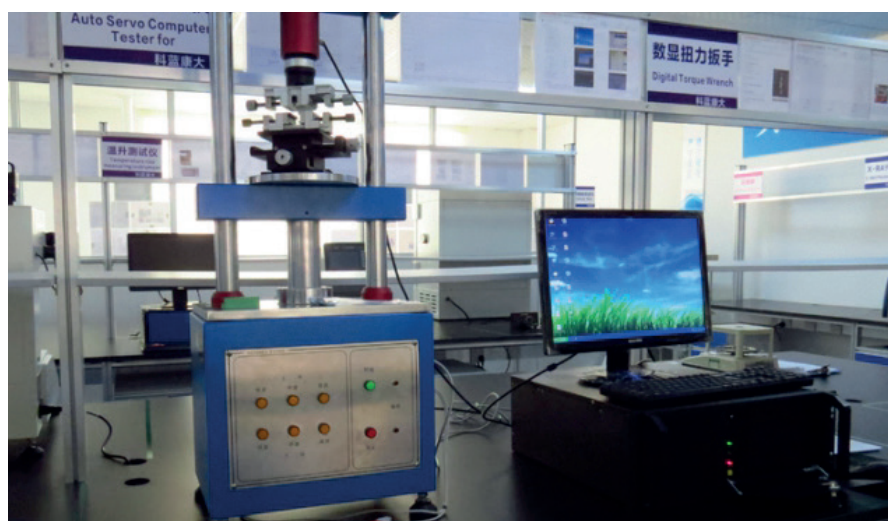
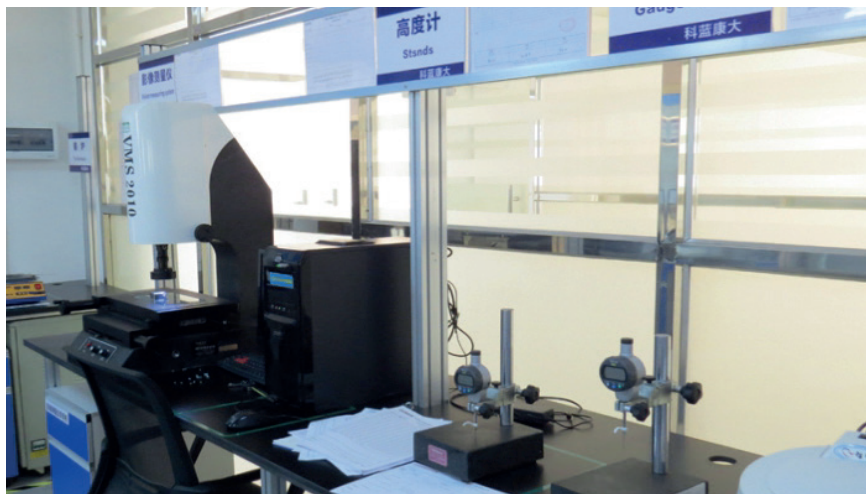
CABCON has all kinds of precision lathes, drilling, tapping machines. Also our production line has a number of advanced and efficient CCD automatic detecting systems.



## TESTING LABORATORY

ISO/IEC17025 standard is applied in CABCON's laboratory. Our lab has included the testing equipments of electrical, environmental, mechanical and vibration.

All equipments are comply with UL1059 UL486E IEC60947 IEC60998 IEC61984 GB13140 to monitor the production process, hence ensure the quality and stability of CABCON's product.



## COMPANY ABILITY



ISO-9001



# CREATING VALUE



Cabcon A/S · Stamholmen 193A · DK-2650 Hvidovre · Denmark · Tel. +45 38 76 03 15 · [www.cabcon.dk](http://www.cabcon.dk)

Cabcon A/S · Trollåsveien 4 · 1414 Trollåsen · Norway · Tel. +47 93 200 204 · [www.cabcon.dk](http://www.cabcon.dk)

Cabcon A/S · Stora Åvägen 21 · 436 34 Askim · Sweden · Tel. +46 735 01 33 24 · [www.cabcon.dk](http://www.cabcon.dk)

Cabcon Asia · Unit 8, 28/F, Cable TV Tower · Hoi Shing Road, Tsuen Wan · Hong Kong