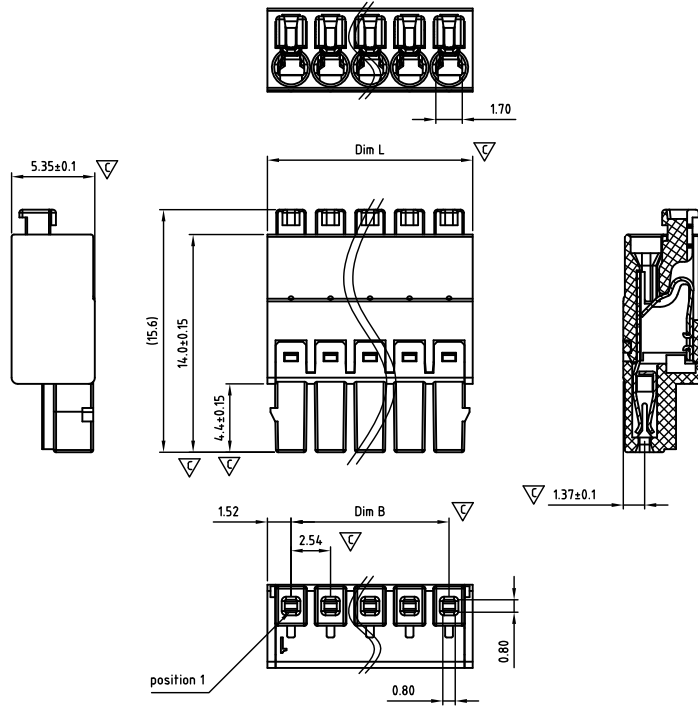


CAPBSD254-SERIES

Pitch 2,54mm



Critical dimension: ▽

Dim.L=(P-1)x2.54+3.04

Dim.B=(P-1)x2.54

P=Number of poles (02-24)

	Dim B	Dim L
0-30mm	+/- 0,15	+/- 0,20
over 30-60mm	+/- 0,20	+/- 0,25
over 60-90mm	+/- 0,25	+/- 0,30
over 90mm	+/- 0,30	+/- 0,40

Tolerance	
x.	+/- 0,50
x.x	+/- 0,30
x.xx	+/- 0,10
x°	+/- 1°

Units:mm

Technical data

Technical data in accordance with UL/CUL

	Use Group	B	C	D
Nominal voltage (V)	150	50	-	-
Nominal current (A)	6	6	-	-
Connection capacity(AWG)	26-20	26-20	-	-

Technical data in accordance with IEC

Rated insulation voltage at pollution degree 2 (V)	160		
Rated current/conductor cross-section (A/mm ²)	6 / 0.5		
Solid/stranded(mm ²)	0.14-0.5 / 0.14-0.5		
Surge voltage category/pollution degree	III / 3	III / 2	II / 2
Rated insulation voltage(V)	32	160	160
Rated surge voltage(kV)	2.5	2.5	2.5

General data

Stripping length(mm)	6-7
Flange Screw thread	-
Flange Screw tightening torque(Nm)	-
Insulation Withstanding Voltage	AC1300V / 1min
Insulation Resistance	1000MΩ or more at DC500V
Using temperature range	-40°C-115°C

Materials

Insulation material group	LCP I UL94 -V0
Wire guard	PhBz, Tin plated
Spring	Stainless steel
Flange Screw	-

Packing information

Poles	Order Number	SPQ
2	CAPBSD25402x000	600
3	CAPBSD25403x000	400
4	CAPBSD25404x000	300
5	CAPBSD25405x000	300
6	CAPBSD25406x000	280
7	CAPBSD25407x000	240
8	CAPBSD25408x000	235
9	CAPBSD25409x000	200
10	CAPBSD25410x000	165
11	CAPBSD25411x000	160
12	CAPBSD25412x000	160
13	CAPBSD25413x000	140
14	CAPBSD25414x000	120
15	CAPBSD25415x000	120
16	CAPBSD25416x000	120
17	CAPBSD25417x000	95
18	CAPBSD25418x000	95
19	CAPBSD25419x000	95
20	CAPBSD25420x000	95
21	CAPBSD25421x000	80
22	CAPBSD25422x000	80
23	CAPBSD25423x000	80
24	CAPBSD25424x000	80

Ordering code

CAP SD 254 xx x xxx
① ② ③ ④ ⑤ ⑥

- ① Type
- ② Product style
- ③ Pitch
- ④ Poles (02-24)
- ⑤ Color
- ⑥ Standard 000 or Custom XXX

Color

0 Black	5 Green
1 Brown	6 Blue
2 Red	G Pale grey
3 Orange	8 Dark grey
4 Yellow	9 White

Key Commercial data

Custom tariff number	8536901000
Country of origin	CN (China)

Mating with headers

CAHCCH254 Series



CAHCCV254 Series

