

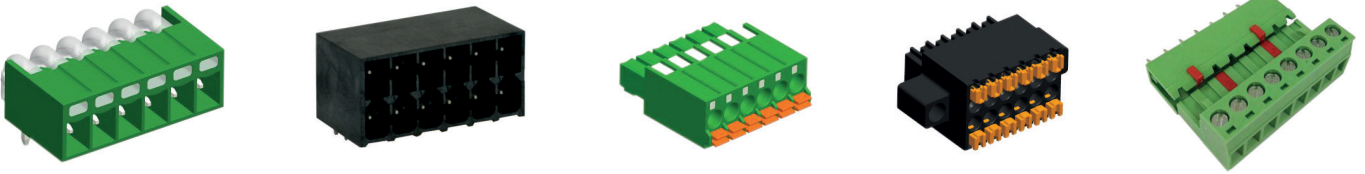
CREATING VALUE

PCB SCREW TYPE RISING CLAMP



CREATING VALUE





COMPANY PROFILE

Cabcon Contacts is a part of the Cabcon Group, which was founded in Copenhagen, Denmark in 2003. Cabcon Contacts are a professional manufacturer of terminal block with a “state of the art” production site in China. The focus in our ISO9001 approved factory in China is quality, lean production and competitive pricing.

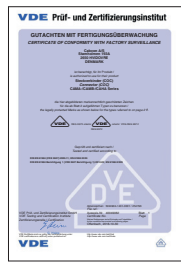
Hard investments have been made in a fully automated production line. Along the production line CCTV systems are installed to monitor and control the production line from the injection, molding, stamping and to the final packing.

To meet the customers demand we offer ink-jet printing and tampon printing and our products can be delivered in trays, boxes and/or Tape on reel.

PRODUCT RANGE

- // Screw type plugs and headers for pluggable system
- // Screwless type plugs for pluggable system
- // PCB screw rising clamp system
- // PCB screw wire protector system
- // PCB spring-cage system
- // PCB barrier screw system
- // Special type Terminal blocks

According to international requirements, most of our products are and will be designed to meet UL and VDE regulations.



CABCON GROUP

As experienced experts in electromechanical products and cable assemblies we support our customers and partners around the world with products, solutions and services in the industrial environment. With our motto “Creating Value” we continuously develop innovative, sustainable and useful solutions for our customers individual needs.

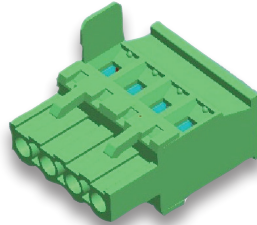
With headquarter in Denmark, divisions in Sweden, Norway and Hong Kong - we meet the customers on site. With our international sales setup, and warehouses in both Europe and Asia we create value with local presence, but global logistics.



OUR SERVICE

CUSTOMIZED PRODUCTS

Terminal blocks or headers for special applications can be developed at CABCON to meet the customer's requirements. Modifications of standard housing and integration of an additional wire connection within the plastic housing are possible.



PRINTING

Terminal blocks and headers can be marked by different methods. CABCON offers its customers two kinds of printing: Ink-jet printing, the cost-effective, fast and flexible solution to print letters or individual characters. The tampon printing is also available. The Tampon print guarantees the best quality and definition. A variety of letters and characters are possible, even on corners and round surfaces. Both types of printing are wipe-proof; the tampon-printing method is also resistant to isopropyl alcohol.



PACKING

We can pack in Tape-on-reel, Trays, Boxes. For printed circuit board assembly in automated processes. CABCON can offer terminal blocks and headers on tape-on-reel, in trays or in boxes. Dimensions and shapes are adapted to the assembly machine. Base on request the tapes/trays/boxes can be supplied in antistatic packaging for ESD protection. Terminal blocks and headers in tape-on-reel or tray packing will be delivered with pick & place pad where needed.

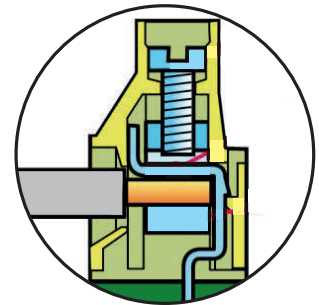


THE CATALOGUE

We have made documentation easy to read, by using icons and keeping all relevant information's on one page. Approvals is showed in the drawing, and mating parts is mentioned where available, so it is easy to find mating options. We are trying to update the catalogue frequently for you to have latest information's available.



**THIS CATALOGUE
CONTAINS PCB
SCREW F-GB; 7@5A D**

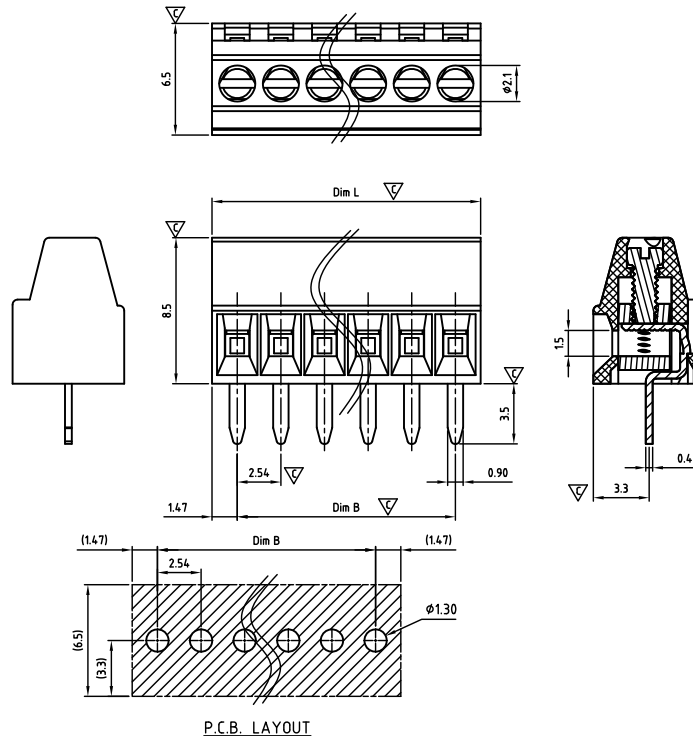


The information in this document is subject to change without further notice.



CAEAHS254-SERIES

cULus E501953



Critical dimension: ▽

Dim.L=Px2.54+0.4		
Dim.B=(P-1)x2.54		
P=Number of poles (02-24)		
	Dim B	Dim L
0-30mm	+/- 0,15	+/- 0,20
over 30-60mm	+/- 0,20	+/- 0,25
over 60-90mm	+/- 0,25	+/- 0,30
over 90mm	+/- 0,30	+/- 0,40

Tolerance	
x.	+/- 0,50
x.x	+/- 0,30
x.xx	+/- 0,10
x°	+/- 1°
	Units:mm

Technical data

Technical data in accordance with UL/CUL

	Use Group	B	C	D
Nominal voltage (V)	150	-	-	-
Nominal current (A)	6	-	-	-
Connection capacity (AWG)	30-18	-	-	-

Technical data in accordance with IEC

Rated insulation voltage at pollution degree 2 (V)	160
Rated current/conductor cross-section (A/mm ²)	6 / 0.5
Solid/stranded(mm ²)	0.14-0.5 / 0.14-0.5
Surge voltage category/pollution degree	III / 3 III / 2 II / 2
Rated insulation voltage(V)	63 160 320
Rated surge voltage(kV)	1.5 1.5 2.5

General data

Stripping length(mm)	4-5
Screw thread	M1.6
Tightening torque(Nm)	0.12-0.15
Insulation Withstanding Voltage	AC 1300 / 1min
Insulation Resistance	1000MΩ or more at DC500V
Using temperature range	-40°C-115°C

Materials

Insulation material group	PA 66 I UL94 -V0
Contact	Brass, Tin plated
Cage	Brass, Ni plated
Screw	Steel, Zn plated

Packing information

Poles	Order Number	SPQ
2	CAEAHS25402x000	2500
3	CAEAHS25403x000	1500
4	CAEAHS25404x000	1050
5	CAEAHS25405x000	810
6	CAEAHS25406x000	750
7	CAEAHS25407x000	595
8	CAEAHS25408x000	595
9	CAEAHS25409x000	588
10	CAEAHS25410x000	588
11	CAEAHS25411x000	360
12	CAEAHS25412x000	360
13	CAEAHS25413x000	330
14	CAEAHS25414x000	295
15	CAEAHS25415x000	270
16	CAEAHS25416x000	270
17	CAEAHS25417x000	240
18	CAEAHS25418x000	220
19	CAEAHS25419x000	220
20	CAEAHS25420x000	220
21	CAEAHS25421x000	195
22	CAEAHS25422x000	180
23	CAEAHS25423x000	180
24	CAEAHS25424x000	180

Ordering code

CAEA HS 254 xx x xxx

① ② ③ ④ ⑤ ⑥

- ① Type
- ② Product style
- ③ Pitch
- ④ Poles (02-24)
- ⑤ Color
- ⑥ Standard 000 or Custom XXX

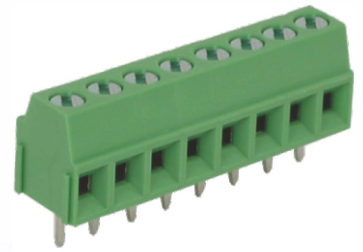
Color

0 Black	5 Green
1 Brown	6 Blue
2 Red	G Pale grey
3 Orange	8 Dark grey
4 Yellow	9 White

Key Commercial data

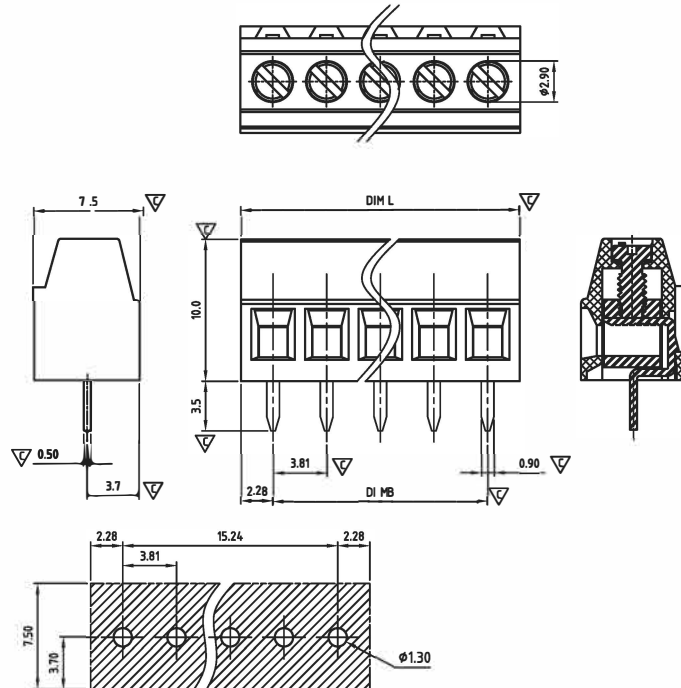
Custom tariff number	8536901100
Country of origin	CN (China)





CAEBHS381-A SERIES

cULus E501953



Critical dimension: ▽

Dim.L=(P-1)x3.81+4.56

Dim.B=(P-1)x3.81

P=Number of poles (02-24)

	Dim B	Dim L
0-30mm	+/- 0,15	+/- 0,20
over 30-60mm	+/- 0,20	+/- 0,25
over 60-90mm	+/- 0,25	+/- 0,30
over 90mm	+/- 0,30	+/- 0,40

P.C.B. LAYOUT

Tolerance	
x	+/- 0,50
x.x	+/- 0,30
x.xx	+/- 0,10
x°	+/-1°
Units:mm	

Pitch 3,81mm

Technical data

Technical data in accordance with UL/CUL

	Use Group	B	C	D
Nominal voltage (V)	300	-	-	-
Nominal current (A)	10	-	-	-
Connection capacity(AWG)	30-16	-	-	-

Technical data in accordance with IEC

Rated insulation voltage at pollution degree 2 (V)	200		
Rated current/conductor cross-section (A/mm ²)	10 / 1		
Solid/stranded(mm ²)	0.14-1.5 / 0.14-1.5		
Surge voltage category /pollution degree	III / 3	III / 2	II / 2
Rated insulation voltage(V)	160	200	320
Rated surge voltage(kV)	2.5	2.5	2.5

General data

Stripping length(mm)	5-6
Screw thread	M2.0
Tightening torque(Nm)	0.20-0.22
Insulation Withstanding Voltage	AC 1600 /1min
Insulation Resistance	1000MΩ or more at DC500V
Using temperature range	-40°C-115°C

Materials

Insulation material group	PA 66 UL94 -V0
Contact	Brass, Tin plated
Cage	Brass, Ni plated
Screw	Steel, Zn plated

Packing information

Poles	Order Number	SPQ
2	CAEBHS38102xA00	1400
3	CAEBHS38103xA00	1000
4	CAEBHS38104xA00	650
5	CAEBHS38105xA00	530
6	CAEBHS38106xA00	400
7	CAEBHS38107xA00	340
8	CAEBHS38108xA00	300
9	CAEBHS38109xA00	250
10	CAEBHS38110xA00	250
11	CAEBHS38111xA00	200
12	CAEBHS38112xA00	200
13	CAEBHS38113xA00	170
14	CAEBHS38114xA00	170
15	CAEBHS38115xA00	170
16	CAEBHS38116xA00	150
17	CAEBHS38117xA00	110
18	CAEBHS38118xA00	110
19	CAEBHS38119xA00	110
20	CAEBHS38120xA00	110
21	CAEBHS38121xA00	100
22	CAEBHS38122xA00	100
23	CAEBHS38123xA00	110
24	CAEBHS38124xA00	110

Ordering code

CAEB HS 381 xx x AXX

① ② ③ ④ ⑤ ⑥

- ① Type
- ② Product style
- ③ Pitch
- ④ Poles (02-24)
- ⑤ Color
- ⑥ Standard A00 or Custom XXX

Color

0 Black	5 Green
1 Brown	6 Blue
2 Red	G Pale grey
3 Orange	8 Dark grey
4 Yellow	9 White

Key Commercial data

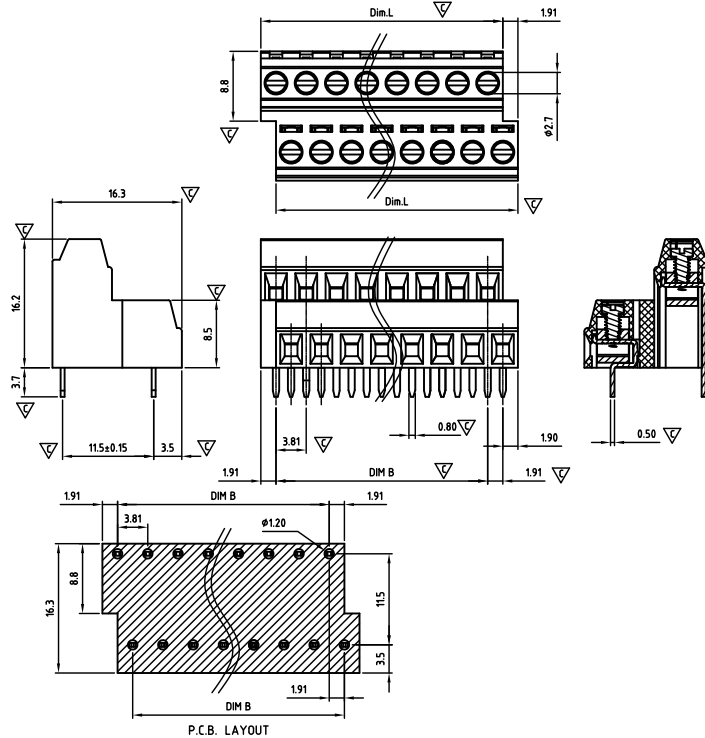
Custom tariff number	8536901100
Country of origin	CN (China)





CAFAHM381-SERIES

cULus E501953



Critical dimension: ▽

Dim.L=Px3.81		
Dim.B=(P-1)x3.81		
P=1/2 Number of poles (04-48)		
	Dim B	Dim L
0-30mm	+/- 0,15	+/- 0,20
over 30-60mm	+/- 0,20	+/- 0,25
over 60-90mm	+/- 0,25	+/- 0,30
over 90mm	+/- 0,30	+/- 0,40

Tolerance	
x.	+/- 0,50
x.x	+/- 0,30
x.xx	+/- 0,10
x°	+/- 1°
Units:mm	

Pitch 3,81mm

Technical data

Technical data in accordance with UL/CUL

	Use Group	B	C	D
Nominal voltage (V)	300	-	-	-
Nominal current (A)	10	-	-	-
Connection capacity(AWG)	30-16	-	-	-

Technical data in accordance with IEC

Rated insulation voltage at pollution degree 2 (V)	200
Rated current/conductor cross-section (A/mm ²)	10 / 1
Solid/stranded(mm ²)	0.14-1.5 / 0.14-1.5
Surge voltage category/pollution degree	III / 3 III / 2 II / 2
Rated insulation voltage(V)	160 200 400
Rated surge voltage(kV)	2.5 2.5 2.5

General data

Stripping length(mm)	5-6
Screw thread	M2.0
Tightening torque(Nm)	0.20-0.22
Insulation Withstanding Voltage	AC 1600 / 1min
Insulation Resistance	1000MΩ or more at DC500V
Using temperature range	-40°C-115°C

Materials

Insulation material group	PA 66 I UL94 -V0
Contact	Brass, Tin plated
Cage	Brass, Ni plated
Screw	Steel, Zn plated

Packing information

Poles	Order Number	SPQ
2*2	CAFAHM38104x000	450
2*3	CAFAHM38106x000	285
2*4	CAFAHM38108x000	210
2*5	CAFAHM38110x000	190
2*6	CAFAHM38112x000	140
2*7	CAFAHM38114x000	140
2*8	CAFAHM38116x000	90
2*9	CAFAHM38118x000	90
2*10	CAFAHM38120x000	90
2*11	CAFAHM38122x000	90
2*12	CAFAHM38124x000	70
2*13	CAFAHM38126x000	70
2*14	CAFAHM38128x000	70
2*15	CAFAHM38130x000	65
2*16	CAFAHM38132x000	36
2*17	CAFAHM38134x000	36
2*18	CAFAHM38136x000	36
2*19	CAFAHM38138x000	30
2*20	CAFAHM38140x000	30
2*21	CAFAHM38142x000	30
2*22	CAFAHM38144x000	30
2*23	CAFAHM38146x000	30
2*24	CAFAHM38148x000	30

Ordering code

CAFA HM 381 xx x XXX
① ② ③ ④ ⑤ ⑥

- ① Type
- ② Product style
- ③ Pitch
- ④ Poles (2*2-2*24)
- ⑤ Color
- ⑥ Standard 000 or Custom XXX

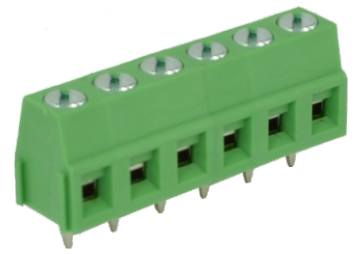
Color

0 Black	5 Green
1 Brown	6 Blue
2 Red	G Pale grey
3 Orange	8 Dark grey
4 Yellow	9 White

Key Commercial data

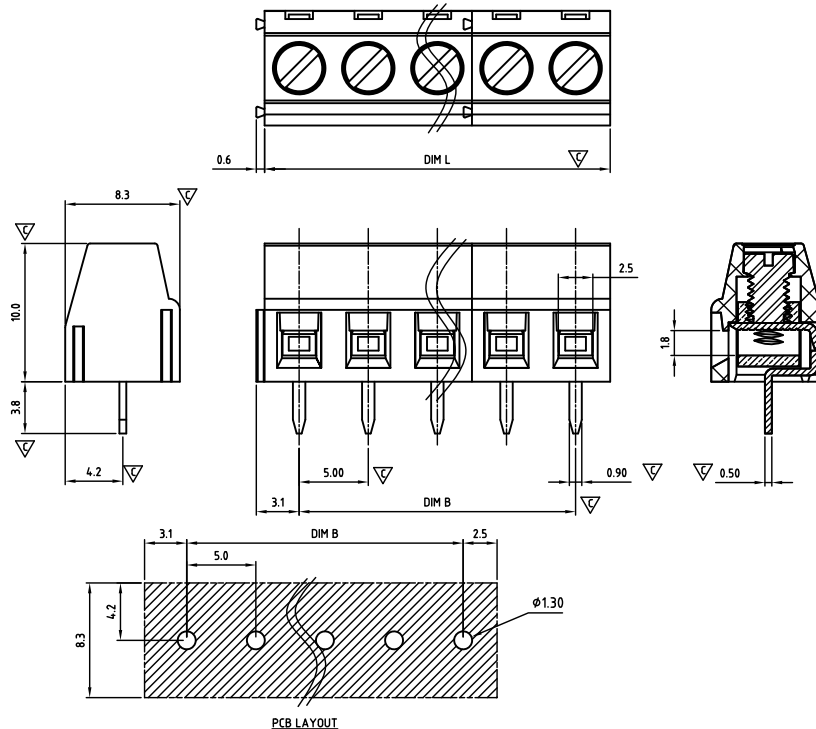
Custom tariff number	8536901100
Country of origin	CN (China)





CAEGHM500-SERIES

cULus E501953



Critical dimension: ∇

Dim.L=Px5.0

Dim.B=(P-1)x5.0

P=Number of poles (02-24)

	Dim B	Dim L
0-30mm	+/- 0,15	+/- 0,20
over 30-60mm	+/- 0,20	+/- 0,25
over 60-90mm	+/- 0,25	+/- 0,30
over 90mm	+/- 0,30	+/- 0,40

Tolerance	
x.	+/- 0,50
x.x	+/- 0,30
x.xx	+/- 0,10
x°	+/- 1°
Units:mm	

Technical data

Technical data in accordance with UL/CUL

	Use Group	B	C	D
Nominal voltage (V)	300	-	-	-
Nominal current (A)	10	-	-	-
Connection capacity (AWG)	30-16	-	-	-

Technical data in accordance with IEC

Rated insulation voltage at pollution degree 2 (V)	250		
Rated current/conductor cross-section (A/mm ²)	13.5 / 1.5		
Solid/stranded(mm ²)	0.14-1.5 / 0.14-1.5		
Surge voltage category/pollution degree	III / 3	III / 2	II / 2
Rated insulation voltage(V)	250	400	630
Rated surge voltage(kV)	4	4	4

General data

Stripping length(mm)	5-6
Screw thread	M3.0
Tightening torque(Nm)	0.40-0.45
Insulation Withstanding Voltage	AC 1600 / 1min
Insulation Resistance	1000M Ω or more at DC500V
Using temperature range	-40°C-115°C

Materials

Insulation material group	PA 66 I UL94 -V0
Contact	Brass, Tin plated
Cage	Brass, Ni plated
Screw	Steel, Zn plated

Packing information

Poles	Order Number	SPQ
2	CAEGHM50002x000	900
3	CAEGHM50003x000	650
4	CAEGHM50004x000	400
5	CAEGHM50005x000	300
6	CAEGHM50006x000	240
7	CAEGHM50007x000	200
8	CAEGHM50008x000	200
9	CAEGHM50009x000	190
10	CAEGHM50010x000	160
11	CAEGHM50011x000	150
12	CAEGHM50012x000	130
13	CAEGHM50013x000	110
14	CAEGHM50014x000	100
15	CAEGHM50015x000	100
16	CAEGHM50016x000	100
17	CAEGHM50017x000	90
18	CAEGHM50018x000	90
19	CAEGHM50019x000	90
20	CAEGHM50020x000	80
21	CAEGHM50021x000	75
22	CAEGHM50022x000	75
23	CAEGHM50023x000	75
24	CAEGHM50024x000	75

Ordering code

CAEG HM 500 xx x XXX

① ② ③ ④ ⑤ ⑥

- ① Type
- ② Product style
- ③ Pitch
- ④ Poles (02-24)
- ⑤ Color
- ⑥ Standard 000 or Custom XXX

Color

0 Black	5 Green
1 Brown	6 Blue
2 Red	G Pale grey
3 Orange	8 Dark grey
4 Yellow	9 White

Key Commercial data

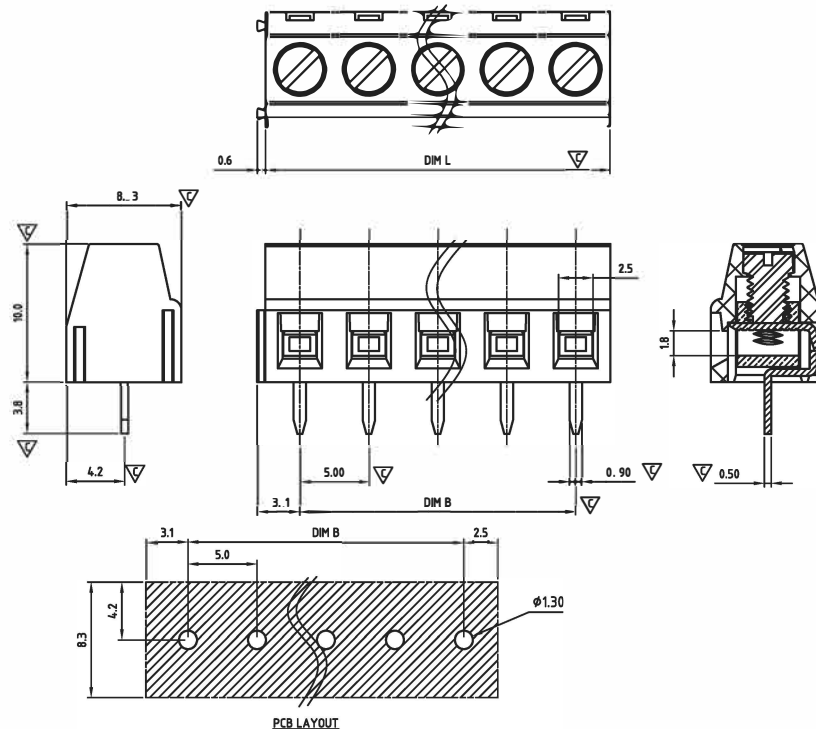
Custom tariff number	8536901100
Country of origin	CN (China)





CAEGHS500-SERIES (solid block)

cULus E501953



Critical dimension: ▽

Dim.L=P×5.0		
Dim.B=(P-1)×5.0		
P=Number of poles (02-24)		
	Dim B	Dim L
0-30mm	+/- 0,15	+/- 0,20
over 30-60mm	+/- 0,20	+/- 0,25
over 60-90mm	+/- 0,25	+/- 0,30
over 90mm	+/- 0,30	+/- 0,40

Tolerance	
x	+/- 0,50
x.x	+/- 0,30
x.xx	+/- 0,10
x°	+/- 1°
Units:mm	

Technical data

Technical data in accordance with UL/CUL

	Use Group	B	C	D
Nominal voltage (V)	300	-	-	-
Nominal current (A)	10	-	-	-
Connection capacity(AWG)	30-16	-	-	-

Technical data in accordance with IEC

Rated insulation voltage at pollution degree 2 (V)	250
Rated current/conductor cross-section (A/mm ²)	13.5 / 1.5
Solid/stranded(mm ²)	0.14-1.5 / 0.14-1.5
Surge voltage category /pollution degree	III / 3 III / 2 II / 2
Rated insulation voltage(V)	250 400 630
Rated surge voltage(kV)	4 4 4

General data

Stripping length(mm)	5-6
Screw thread	M3.0
Tightening torque(Nm)	0.40-0.45
Insulation Withstanding Voltage	AC 1600 / 1min
Insulation Resistance	1000MΩ or more at DC500V
Using temperature range	-40°C-115°C

Materials

Insulation material group	PA 66 I UL94 -V0
Contact	Brass, Tin plated
Cage	Brass, Ni plated
Screw	Steel, Zn plated

Packing information

Poles	Order Number	SPQ
2	CAEGHS50002x000	900
3	CAEGHS50003x000	650
4	CAEGHS50004x000	400
5	CAEGHS50005x000	300
6	CAEGHS50006x000	240
7	CAEGHS50007x000	200
8	CAEGHS50008x000	200
9	CAEGHS50009x000	190
10	CAEGHS50010x000	160
11	CAEGHS50011x000	150
12	CAEGHS50012x000	130
13	CAEGHS50013x000	110
14	CAEGHS50014x000	100
15	CAEGHS50015x000	100
16	CAEGHS50016x000	100
17	CAEGHS50017x000	90
18	CAEGHS50018x000	90
19	CAEGHS50019x000	90
20	CAEGHS50020x000	80
21	CAEGHS50021x000	75
22	CAEGHS50022x000	75
23	CAEGHS50023x000	75
24	CAEGHS50024x000	75

Ordering code

CAEG HS 500 xx x XXX

① ② ③ ④ ⑤ ⑥

- ① Type
- ② Product style
- ③ Pitch
- ④ Poles (02-24)
- ⑤ Color
- ⑥ Standard 000 or Custom XXX

Color

0 Black	5 Green
1 Brown	6 Blue
2 Red	G Pale grey
3 Orange	8 Dark grey
4 Yellow	9 White

Key Commercial data

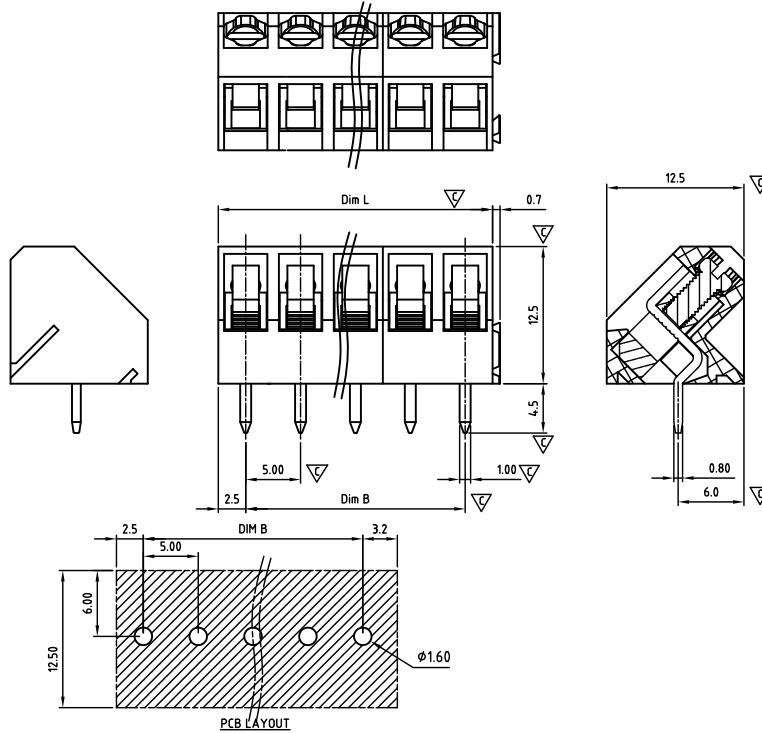
Custom tariff number	8536901100
Country of origin	CN (China)





CAEHAM500-SERIES

cULus E501953



Critical dimension: ▽

Dim.L=Px5.0		
Dim.B=(P-1)x5.0		
P=Number of poles (02-24)		
	Dim B	Dim L
0-30mm	+/- 0,15	+/- 0,20
over 30-60mm	+/- 0,20	+/- 0,25
over 60-90mm	+/- 0,25	+/- 0,30
over 90mm	+/- 0,30	+/- 0,40

Tolerance	
x.	+/- 0,50
x.x	+/- 0,30
x.xx	+/- 0,10
x°	+/-1°
Units:mm	

Technical data

Technical data in accordance with UL/CUL

	Use Group	B	C	D
Nominal voltage (V)		300	-	300
Nominal current (A)		15	-	10
Connection capacity(AWG)		24-12	-	24-12

Technical data in accordance with IEC

Rated insulation voltage at pollution degree 2 (V)	250		
Rated current/conductor cross-section (A/mm ²)	24 / 2,5		
Solid/stranded(mm ²)	0,5-2,5 / 0,5-2,5		
Surge voltage category/pollution degree	III / 3	III / 2	II / 2
Rated insulation voltage(V)	250	400	630
Rated surge voltage(kV)	4	4	4

General data

Stripping length(mm)	6-7
Screw thread	M2.5
Tightening torque(Nm)	0.40-0.45
Insulation Withstanding Voltage	AC 1600 / 1min
Insulation Resistance	1000MΩ or more at DC500V
Using temperature range	-40°C-115°C

Materials

Insulation material group	PA 66 I UL94 -V0
Contact	Brass, Tin plated
Cage	Brass, Ni plated
Screw	Steel, Zn plated

Packing information

Poles	Order Number	SPQ
2	CAEHAM50002x000	500
3	CAEHAM50003x000	350
4	CAEHAM50004x000	250
5	CAEHAM50005x000	200
6	CAEHAM50006x000	150
7	CAEHAM50007x000	150
8	CAEHAM50008x000	125
9	CAEHAM50009x000	110
10	CAEHAM50010x000	100
11	CAEHAM50011x000	100
12	CAEHAM50012x000	90
13	CAEHAM50013x000	64
14	CAEHAM50014x000	64
15	CAEHAM50015x000	64
16	CAEHAM50016x000	64
17	CAEHAM50017x000	64
18	CAEHAM50018x000	64
19	CAEHAM50019x000	60
20	CAEHAM50020x000	32
21	CAEHAM50021x000	32
22	CAEHAM50022x000	32
23	CAEHAM50023x000	32
24	CAEHAM50024x000	32

Ordering code

CAEH AM 500 xx x XXX

① ② ③ ④ ⑤ ⑥

- ① Type
- ② Product style
- ③ Pitch
- ④ Poles (02-24)
- ⑤ Color
- ⑥ Standard 000 or Custom XXX

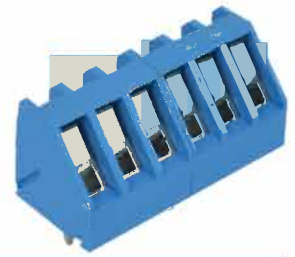
Color

0 Black	5 Green
1 Brown	6 Blue
2 Red	G Pale grey
3 Orange	8 Dark grey
4 Yellow	9 White

Key Commercial data

Custom tariff number	8536901100
Country of origin	CN (China)

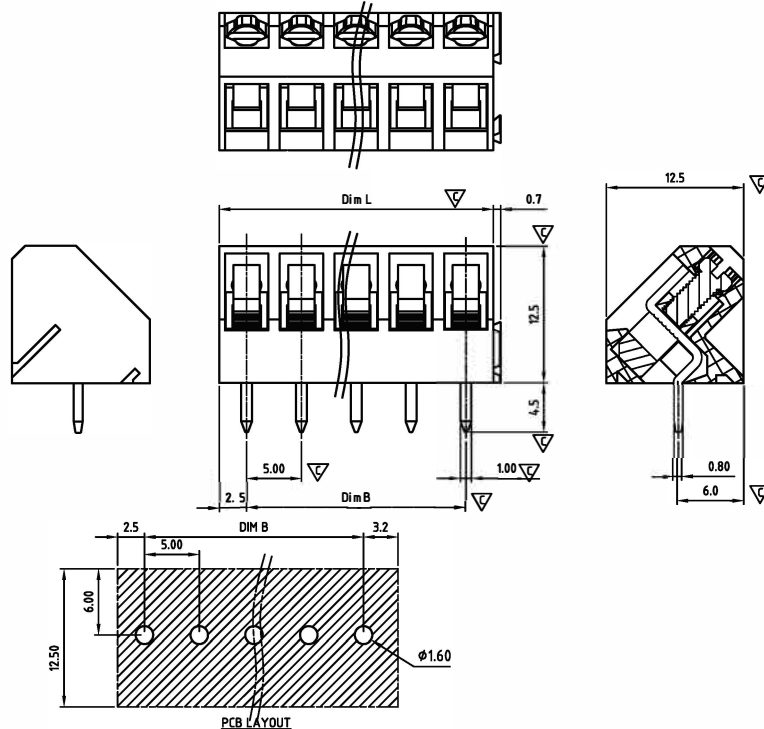




PCB SCREW RISING CLAMP SYSTEM

CAEHAS500-SERIES (solid block)

cULus E501953



Critical dimension: ∇

	Dim B	Dim L
Dim.L=Px5.0		
Dim.B=(P-1)x5.0		
P=Number of poles (02-24)		
	Dim B	Dim L
0-30mm	+/- 0,15	+/- 0,20
over 30-60mm	+/- 0,20	+/- 0,25
over 60-90mm	+/- 0,25	+/- 0,30
over 90mm	+/- 0,30	+/- 0,40

Tolerance	
x	+/- 0,50
x.x	+/- 0,30
x.xx	+/- 0,10
x°	+/- 1°
Units:mm	

Technical data

Technical data in accordance with UL/CUL

	Use Group	B	C	D
Nominal voltage (V)		300	-	300
Nominal current (A)		15	-	10
Connection capacity(AWG)		24-12	-	24-12

Technical data in accordance with IEC

Rated insulation voltage at pollution degree 2 (V)	250		
Rated current/conductor cross-section (A/mm ²)	24 / 2.5		
Solid/stranded(mm ²)	0.5-2,5 / 0.5-2.5		
Surge voltage category/pollution degree	III / 3	III / 2	II / 2
Rated insulation voltage(V)	250	400	630
Rated surge voltage(kV)	4	4	4

General data

Stripping length(mm)	6-7
Screw thread	M2.5
Tightening torque(Nm)	0.40-0.45
Insulation Withstanding Voltage	AC 1600 / 1min
Insulation Resistance	1000M Ω or more at DC500V
Using temperature range	-40°C-115°C

Materials

Insulation material group	PA 66 I UL94 -V0
Contact	Brass, Tin plated
Cage	Brass, Ni plated
Screw	Steel, Zn plated

Packing information

Poles	Order Number	SPQ
2	CAEHAS50002x000	500
3	CAEHAS50003x000	350
4	CAEHAS50004x000	250
5	CAEHAS50005x000	200
6	CAEHAS50006x000	150
7	CAEHAS50007x000	150
8	CAEHAS50008x000	125
9	CAEHAS50009x000	110
10	CAEHAS50010x000	100
11	CAEHAS50011x000	100
12	CAEHAS50012x000	90
13	CAEHAS50013x000	64
14	CAEHAS50014x000	64
15	CAEHAS50015x000	64
16	CAEHAS50016x000	64
17	CAEHAS50017x000	64
18	CAEHAS50018x000	64
19	CAEHAS50019x000	60
20	CAEHAS50020x000	32
21	CAEHAS50021x000	32
22	CAEHAS50022x000	32
23	CAEHAS50023x000	32
24	CAEHAS50024x000	32

Ordering code

CAEH AS 500 xx x xxx
① ② ③ ④ ⑤ ⑥

- ① Type
- ② Product style
- ③ Pitch
- ④ Poles (02-24)
- ⑤ Color
- ⑥ Standard 000 or Custom XXX

Color		
0 Black	5 Green	
1 Brown	6 Blue	
2 Red	7 Pale grey	
3 Orange	8 Dark grey	
4 Yellow	9 White	

Key Commercial data

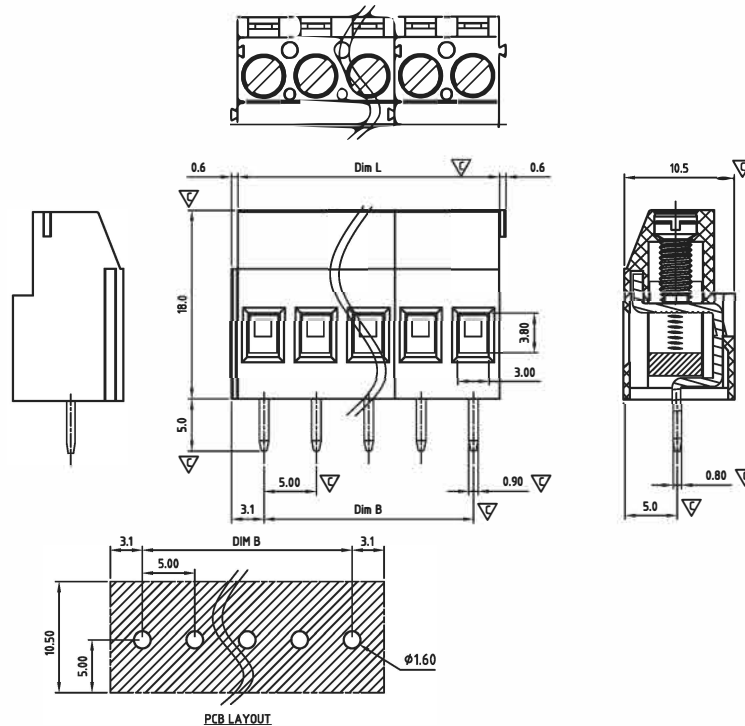
Custom tariff number	8536901100
Country of origin	CN (China)





CAEJHM500-SERIES (short body)

cULus E501953



Critical dimension: ▽

Dim.L=Px5.0		
Dim.B=(P-1)x5.0		
P=Number of poles (02-24)		
	Dim B	Dim L
0-30mm	+/- 0,15	+/- 0,20
over 30-60mm	+/- 0,20	+/- 0,25
over 60-90mm	+/- 0,25	+/- 0,30
over 90mm	+/- 0,30	+/- 0,40

Tolerance	
x	+/- 0,50
x.x	+/- 0,30
x.xx	+/- 0,10
x°	+/-1°
Units:mm	

Technical data

Technical data in accordance with UL/CUL

	Use Group	B	C	D
Nominal voltage (V)	300	-	-	300
Nominal current (A)	20	-	-	10
Connection capacity(AWG)	30-12	-	-	30-12

Technical data in accordance with IEC

Rated insulation voltage at pollution degree 2 (V)	400		
Rated current/conductor cross-section (A/mm ²)	24 / 2.5		
Solid/stranded(mm ²)	0.2-4 / 0.2-2.5		
Surge voltage category/pollution degree	III / 3	III / 2	II / 2
Rated insulation voltage(V)	250	400	630
Rated surge voltage(kV)	4	4	4

General data

Stripping length(mm)	7-8
Screw thread	M3.0
Tightening torque(Nm)	0.5-0.6
Insulation Withstanding Voltage	AC 1600 / 1min
Insulation Resistance	1000MΩ or more at DC500V
Using temperature range	-40°C-115°C

Materials

Insulation material group	PA 66 I UL94 -V0
Contact	Brass, Tin plated
Cage	Brass, Ni plated
Screw	Steel, Zn plated

Packing information

Poles	Order Number	SPQ
2	CAEJHM50002x000	420
3	CAEJHM50003x000	270
4	CAEJHM50004x000	270
5	CAEJHM50005x000	175
6	CAEJHM50006x000	150
7	CAEJHM50007x000	120
8	CAEJHM50008x000	100
9	CAEJHM50009x000	100
10	CAEJHM50010x000	75
11	CAEJHM50011x000	75
12	CAEJHM50012x000	75
13	CAEJHM50013x000	50
14	CAEJHM50014x000	50
15	CAEJHM50015x000	50
16	CAEJHM50016x000	50
17	CAEJHM50017x000	50
18	CAEJHM50018x000	50
19	CAEJHM50019x000	50
20	CAEJHM50020x000	50
21	CAEJHM50021x000	25
22	CAEJHM50022x000	25
23	CAEJHM50023x000	25
24	CAEJHM50024x000	25

Ordering code

CAEJ HM 500 xx x xxx

① ② ③ ④ ⑤ ⑥

- ① Type
- ② Product style
- ③ Pitch
- ④ Poles (02-24)
- ⑤ Color
- ⑥ Standard 000 or Custom XXX

Color

0 Black	5 Green
1 Brown	6 Blue
2 Red	G Pale grey
3 Orange	8 Dark grey
4 Yellow	9 White

Key Commercial data

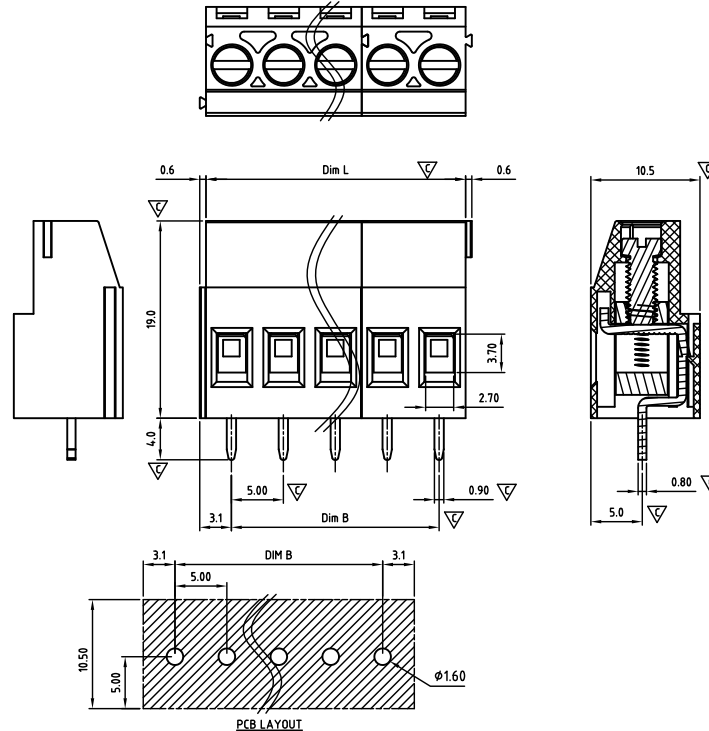
Custom tariff number	8536901100
Country of origin	CN (China)





CAEJHM500-SERIES

cULus E501953



Critical dimension: ∇

Dim.L=Px5.0		
Dim.B=(P-1)x5.0		
P=Number of poles (02-24)		
	Dim B	Dim L
0-30mm	+/- 0,15	+/- 0,20
over 30-60mm	+/- 0,20	+/- 0,25
over 60-90mm	+/- 0,25	+/- 0,30
over 90mm	+/- 0,30	+/- 0,40

Tolerance	
x.	+/- 0,50
x.x	+/- 0,30
x.xx	+/- 0,10
x°	+/- 1°
	Units:mm

Technical data

Technical data in accordance with UL/CUL

	Use Group	B	C	D
Nominal voltage (V)		300	-	300
Nominal current (A)		20	-	10
Connection capacity(AWG)		30-12	-	30-12

Technical data in accordance with IEC

Rated insulation voltage at pollution degree 2 (V)	400		
Rated current/conductor cross-section (A/mm ²)	24 / 2.5		
Solid/stranded(mm ²)	0.2-4 / 0.2-2.5		
Surge voltage category/pollution degree	III / 3	III / 2	II / 2
Rated insulation voltage(V)	250	400	630
Rated surge voltage(kV)	4	4	4

General data

Stripping length(mm)	7-8
Screw thread	M3.0
Tightening torque(Nm)	0.5-0.6
Insulation Withstanding Voltage	AC 1600 / 1min
Insulation Resistance	1000M Ω or more at DC500V
Using temperature range	-40°C-115°C

Materials

Insulation material group	PA 66 I UL94 -V0
Contact	Brass, Tin plated
Cage	Brass, Ni plated
Screw	Steel, Zn plated

Packing information

Poles	Order Number	SPQ
2	CAEJHM50002xH00	420
3	CAEJHM50003xH00	270
4	CAEJHM50004xH00	270
5	CAEJHM50005xH00	175
6	CAEJHM50006xH00	150
7	CAEJHM50007xH00	120
8	CAEJHM50008xH00	100
9	CAEJHM50009xH00	100
10	CAEJHM50010xH00	75
11	CAEJHM50011xH00	75
12	CAEJHM50012xH00	75
13	CAEJHM50013xH00	50
14	CAEJHM50014xH00	50
15	CAEJHM50015xH00	50
16	CAEJHM50016xH00	50
17	CAEJHM50017xH00	50
18	CAEJHM50018xH00	50
19	CAEJHM50019xH00	50
20	CAEJHM50020xH00	50
21	CAEJHM50021xH00	25
22	CAEJHM50022xH00	25
23	CAEJHM50023xH00	25
24	CAEJHM50024xH00	25

Ordering code

CAEJ HM 500 xx x Hxx

① ② ③ ④ ⑤ ⑥

- ① Type
- ② Product style
- ③ Pitch
- ④ Poles (02-24)
- ⑤ Color
- ⑥ Standard H00 or Custom XXX

Color

0 Black	5 Green
1 Brown	6 Blue
2 Red	G Pale grey
3 Orange	8 Dark grey
4 Yellow	9 White

Key Commercial data

Custom tariff number	8536901100
Country of origin	CN (China)

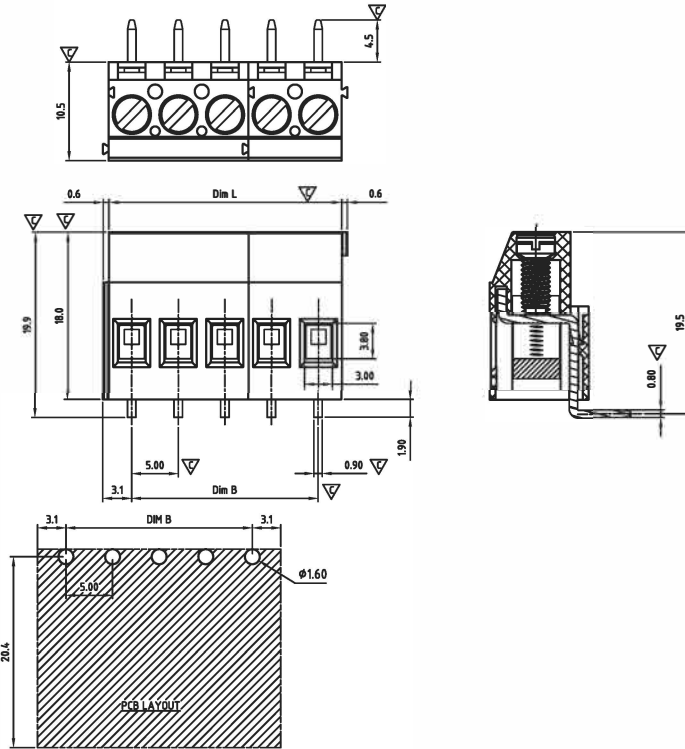




CAEJVM500-SERIES (short body)

Pitch 5,00mm

cULus E501953



Critical dimension: ∇

Dim.L= $P \times 5.0$

Dim.B= $(P-1) \times 5.0$

P=Number of poles (02-24)

	Dim B	Dim L
0-30mm	+/- 0,15	+/- 0,20
over 30-60mm	+/- 0,20	+/- 0,25
over 60-90mm	+/- 0,25	+/- 0,30
over 90mm	+/- 0,30	+/- 0,40

Tolerance	
x	+/- 0,50
x.x	+/- 0,30
x.xx	+/- 0,10
x°	+/- 1°
ϕ	Units:mm

Technical data

Technical data in accordance with UL/CUL

	Use Group	B	C	D
Nominal voltage (V)	300	-	-	300
Nominal current (A)	20	-	-	10
Connection capacity(AWG)	30-12	-	-	30-12

Technical data in accordance with IEC

Rated insulation voltage at pollution degree 2 (V)	400		
Rated current/conductor cross-section (A/mm ²)	24 / 2.5		
Solid/stranded(mm ²)	0.2-4 / 0.2-2.5		
Surge voltage category/pollution degree	III / 3	III / 2	II / 2
Rated insulation voltage(V)	250	400	630
Rated surge voltage(kV)	4	4	4

General data

Stripping length(mm)	7-8
Screw thread	M3.0
Tightening torque(Nm)	0.5-0.6
Insulation Withstanding Voltage	AC 1600 / 1min
Insulation Resistance	1000M Ω or more at DC500V
Using temperature range	-40°C-115°C

Materials

Insulation material group	PA 66 UL94 -V0
Contact	Brass, Tin plated
Cage	Brass, Ni plated
Screw	Steel, Zn plated

Packing information

Poles	Order Number	SPQ
2	CAEJVM50002x000	420
3	CAEJVM50003x000	270
4	CAEJVM50004x000	270
5	CAEJVM50005x000	175
6	CAEJVM50006x000	150
7	CAEJVM50007x000	120
8	CAEJVM50008x000	100
9	CAEJVM50009x000	100
10	CAEJVM50010x000	75
11	CAEJVM50011x000	75
12	CAEJVM50012x000	75
13	CAEJVM50013x000	50
14	CAEJVM50014x000	50
15	CAEJVM50015x000	50
16	CAEJVM50016x000	50
17	CAEJVM50017x000	50
18	CAEJVM50018x000	50
19	CAEJVM50019x000	50
20	CAEJVM50020x000	50
21	CAEJVM50021x000	25
22	CAEJVM50022x000	25
23	CAEJVM50023x000	25
24	CAEJVM50024x000	25

Ordering code

CAEJVM 500 xx x xxx

① ② ③ ④ ⑤ ⑥

- ① Type
- ② Product style
- ③ Pitch
- ④ Poles (02-24)
- ⑤ Color
- ⑥ Standard 000 or Custom XXX

Color

0 Black	5 Green
1 Brown	6 Blue
2 Red	7 Pale grey
3 Orange	8 Dark grey
4 Yellow	9 White

Key Commercial data

Custom tariff number	8536901100
Country of origin	CN (China)

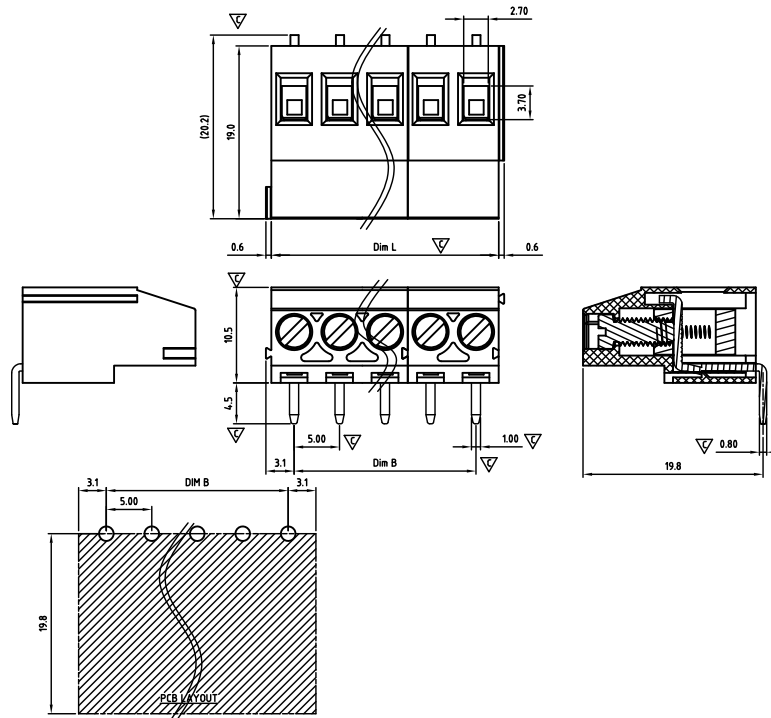




CAEJVM500-SERIES

Pitch 5,00mm

cULus E501953



Critical dimension: ▽

Dim.L=Px5.0		
Dim.B=(P-1)x5.0		
P=Number of poles (02-24)		
	Dim B	Dim L
0-30mm	+/- 0,15	+/- 0,20
over 30-60mm	+/- 0,20	+/- 0,25
over 60-90mm	+/- 0,25	+/- 0,30
over 90mm	+/- 0,30	+/- 0,40

Tolerance	
x.	+/- 0,50
x.x	+/- 0,30
x.xx	+/- 0,10
x°	+/- 1°
Units:mm	

Technical data

Technical data in accordance with UL/CUL

	Use Group	B	C	D
Nominal voltage (V)		300	-	300
Nominal current (A)		20	-	10
Connection capacity(AWG)		30-12	-	30-12

Technical data in accordance with IEC

Rated insulation voltage at pollution degree 2 (V)	400		
Rated current/conductor cross-section (A/mm ²)	24 / 2.5		
Solid/stranded(mm ²)	0.2-4 / 0.2-2.5		
Surge voltage category/pollution degree	III / 3	III / 2	II / 2
Rated insulation voltage(V)	250	400	630
Rated surge voltage(kV)	4	4	4

General data

Stripping length(mm)	7-8
Screw thread	M3.0
Tightening torque(Nm)	0.5-0.6
Insulation Withstanding Voltage	AC 1600 / 1min
Insulation Resistance	1000MΩ or more at DC500V
Using temperature range	-40°C-115°C

Materials

Insulation material group	PA 66 I UL94 -V0
Contact	Brass, Tin plated
Cage	Brass, Ni plated
Screw	Steel, Zn plated

Packing information

Poles	Order Number	SPQ
2	CAEJVM50002xH00	420
3	CAEJVM50003xH00	270
4	CAEJVM50004xH00	270
5	CAEJVM50005xH00	175
6	CAEJVM50006xH00	150
7	CAEJVM50007xH00	120
8	CAEJVM50008xH00	100
9	CAEJVM50009xH00	100
10	CAEJVM50010xH00	75
11	CAEJVM50011xH00	75
12	CAEJVM50012xH00	75
13	CAEJVM50013xH00	50
14	CAEJVM50014xH00	50
15	CAEJVM50015xH00	50
16	CAEJVM50016xH00	50
17	CAEJVM50017xH00	50
18	CAEJVM50018xH00	50
19	CAEJVM50019xH00	50
20	CAEJVM50020xH00	50
21	CAEJVM50021xH00	25
22	CAEJVM50022xH00	25
23	CAEJVM50023xH00	25
24	CAEJVM50024xH00	25

Ordering code

CAEJVM 500 xx x Hxx

① ② ③ ④ ⑤ ⑥

- ① Type
- ② Product style
- ③ Pitch
- ④ Poles (02-24)
- ⑤ Color
- ⑥ Standard H00 or Custom XXX

Color

0 Black	5 Green
1 Brown	6 Blue
2 Red	G Pale grey
3 Orange	8 Dark grey
4 Yellow	9 White

Key Commercial data

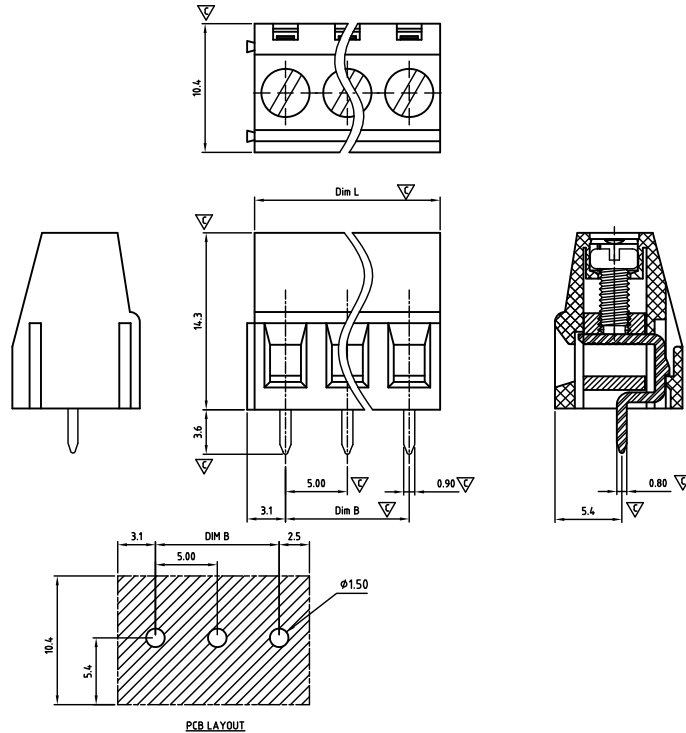
Custom tariff number	8536901100
Country of origin	CN (China)





CAEKHS500-SERIES

cULus E501953



Critical dimension: ∇

Dim.L=Px5.0		
Dim.B=(P-1)x5.0		
P=Number of poles (02-24)		
	Dim B	Dim L
0-30mm	+/- 0,15	+/- 0,20
over 30-60mm	+/- 0,20	+/- 0,25
over 60-90mm	+/- 0,25	+/- 0,30
over 90mm	+/- 0,30	+/- 0,40

Tolerance	
x.	+/- 0,50
x.x	+/- 0,30
x.xx	+/- 0,10
x°	+/- 1°
	Units:mm

Technical data

Technical data in accordance with UL/CUL

	Use Group	B	C	D
Nominal voltage (V)	300	-	-	-
Nominal current (A)	15	-	-	-
Connection capacity(AWG)	30-12	-	-	-

Technical data in accordance with IEC

Rated insulation voltage at pollution degree 2 (V)	400		
Rated current/conductor cross-section (A/mm ²)	17.5 / 2.5		
Solid/stranded(mm ²)	0.14-2.5 / 0.14-2.5		
Surge voltage category/pollution degree	III / 3	III / 2	II / 2
Rated insulation voltage(V)	250	400	630
Rated surge voltage(kV)	4	4	4

General data

Stripping length(mm)	6-7
Screw thread	M2.5
Tightening torque(Nm)	0.40-0.45
Insulation Withstanding Voltage	AC 1600 / 1min
Insulation Resistance	1000M Ω or more at DC500V
Using temperature range	-40°C-115°C

Materials

Insulation material group	PA 66 I UL94 -V0
Contact	Brass, Tin plated
Cage	Brass, Ni plated
Screw	Steel, Zn plated

Packing information

Poles	Order Number	SPQ
2	CAEKHS50002x000	400
3	CAEKHS50003x000	250
4	CAEKHS50004x000	200
5	CAEKHS50005x000	160
6	CAEKHS50006x000	128
7	CAEKHS50007x000	105
8	CAEKHS50008x000	105
9	CAEKHS50009x000	70
10	CAEKHS50010x000	70
11	CAEKHS50011x000	70
12	CAEKHS50012x000	70
13	CAEKHS50013x000	35
14	CAEKHS50014x000	35
15	CAEKHS50015x000	35
16	CAEKHS50016x000	35
17	CAEKHS50017x000	35
18	CAEKHS50018x000	35
19	CAEKHS50019x000	35
20	CAEKHS50020x000	35
21	CAEKHS50021x000	35
22	CAEKHS50022x000	35
23	CAEKHS50023x000	35
24	CAEKHS50024x000	35

Ordering code

CAEK HS 500 xx x xxx

① ② ③ ④ ⑤ ⑥

- ① Type
- ② Product style
- ③ Pitch
- ④ Poles (02-24)
- ⑤ Color
- ⑥ Standard 000 or Custom XXX

Color

0 Black	5 Green
1 Brown	6 Blue
2 Red	G Pale grey
3 Orange	8 Dark grey
4 Yellow	9 White

Key Commercial data

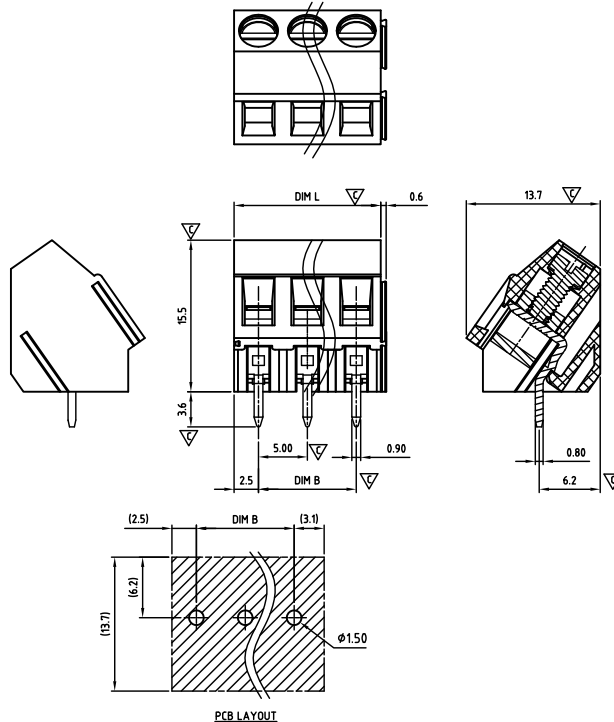
Custom tariff number	8536901100
Country of origin	CN (China)





CAELAM500-SERIES

cULus E501953



Critical dimension: ▽

Dim.L=Px5.0

Dim.B=(P-1)x5.0

P=Number of poles (02-24)

	Dim B	Dim L
0-30mm	+/- 0,15	+/- 0,20
over 30-60mm	+/- 0,20	+/- 0,25
over 60-90mm	+/- 0,25	+/- 0,30
over 90mm	+/- 0,30	+/- 0,40

Tolerance	
x.	+/- 0,50
x.x	+/- 0,30
x.xx	+/- 0,10
x°	+/- 1°

Units:mm

Technical data

Technical data in accordance with UL/CUL

	Use Group	B	C	D
Nominal voltage (V)		300	-	300
Nominal current (A)		15	-	10
Connection capacity(AWG)		30-12	-	30-12

Technical data in accordance with IEC

Rated insulation voltage at pollution degree 2 (V)	400		
Rated current/conductor cross-section (A/mm ²)	24 / 2.5		
Solid/stranded(mm ²)	0.14-4 / 0.14-2.5		
Surge voltage category/pollution degree	III / 3	III / 2	II / 2
Rated insulation voltage(V)	250	400	630
Rated surge voltage(kV)	4	4	4

General data

Stripping length(mm)	6-7
Screw thread	M2.5
Tightening torque(Nm)	0.40-0.45
Insulation Withstanding Voltage	AC 1600 / 1min
Insulation Resistance	1000MΩ or more at DC500V
Using temperature range	-40°C-115°C

Materials

Insulation material group	PA 66 I UL94 -V0
Contact	Brass, Tin plated
Cage	Brass, Ni plated
Screw	Steel, Zn plated

Packing information

Poles	Order Number	SPQ
2	CAELAM50002x000	500
3	CAELAM50003x000	300
4	CAELAM50004x000	180
5	CAELAM50005x000	175
6	CAELAM50006x000	135
7	CAELAM50007x000	115
8	CAELAM50008x000	100
9	CAELAM50009x000	90
10	CAELAM50010x000	85
11	CAELAM50011x000	75
12	CAELAM50012x000	65
13	CAELAM50013x000	65
14	CAELAM50014x000	55
15	CAELAM50015x000	50
16	CAELAM50016x000	50
17	CAELAM50017x000	50
18	CAELAM50018x000	50
19	CAELAM50019x000	45
20	CAELAM50020x000	40
21	CAELAM50021x000	40
22	CAELAM50022x000	35
23	CAELAM50023x000	35
24	CAELAM50024x000	35

Ordering code

CAEL AM 500 xx x xxx

① ② ③ ④ ⑤ ⑥

- ① Type
- ② Product style
- ③ Pitch
- ④ Poles (02-24)
- ⑤ Color
- ⑥ Standard 000 or Custom XXX

Color

0 Black	5 Green
1 Brown	6 Blue
2 Red	G Pale grey
3 Orange	8 Dark grey
4 Yellow	9 White

Key Commercial data

Custom tariff number	8536901100
Country of origin	CN (China)

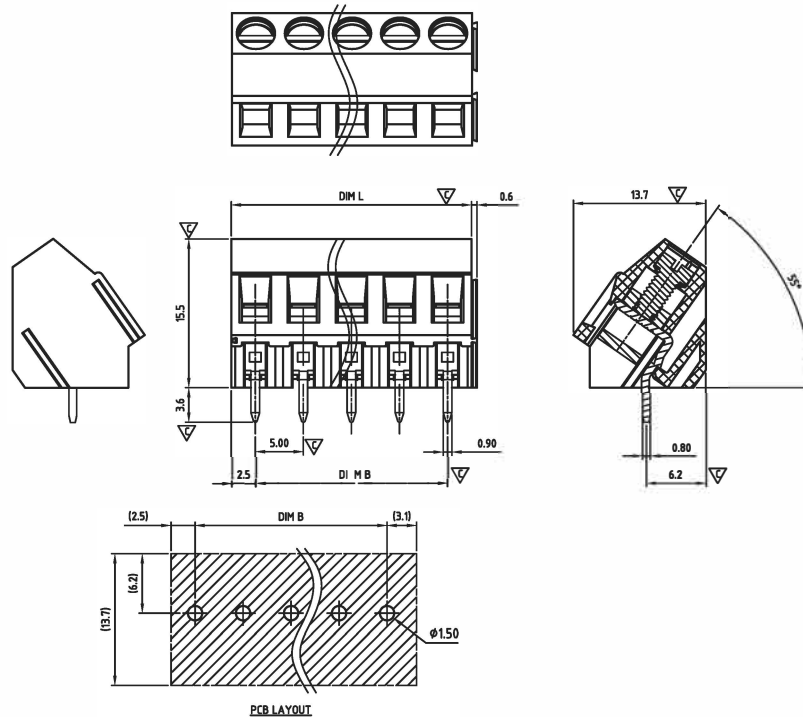




CAELAM500-SERIES (Solid block)

Pitch 5,00mm

cULus E501953



Critical dimension: ▽

Dim.L=Px5.0		
Dim.B=(P-1)x5.0		
P=Number of poles (02-24)		
	Dim B	Dim L
0-30mm	+/- 0,15	+/- 0,20
over 30-60mm	+/- 0,20	+/- 0,25
over 60-90mm	+/- 0,25	+/- 0,30
over 90mm	+/- 0,30	+/- 0,40

Tolerance	
x	+/- 0,50
x.x	+/- 0,30
x.xx	+/- 0,10
x°	+/-1°
Units:mm	

Technical data

Technical data in accordance with UL/CUL

	Use Group	B	C	D
Nominal voltage (V)		300	-	300
Nominal current (A)		15	-	10
Connection capacity(AWG)		30-12	-	30-12

Technical data in accordance with IEC

Rated insulation voltage at pollution degree 2 (V)		400	
Rated current/conductor cross-section (A/mm ²)		24 / 2.5	
Solid/stranded(mm ²)		0.14-4 / 0.14-2.5	
Surge voltage category/pollution degree	III / 3	III / 2	II / 2
Rated insulation voltage(V)	250	400	630
Rated surge voltage(kV)	4	4	4

General data

Stripping length(mm)	6-7
Screw thread	M2.5
Tightening torque(Nm)	0.40-0.45
Insulation Withstanding Voltage	AC 1600 / 1min
Insulation Resistance	1000MΩ or more at DC500V
Using temperature range	-40°C-115°C

Materials

Insulation material group	PA 66 UL 94 -V0
Contact	Brass, Tin plated
Cage	Brass, Ni plated
Screw	Steel, Zn plated

Packing information

Poles	Order Number	SPQ
2	CAELAM50002xS0C	500
3	CAELAM50003xS0C	300
4	CAELAM50004xS0C	180
5	CAELAM50005xS0C	175
6	CAELAM50006xS0C	135
7	CAELAM50007xS0C	115
8	CAELAM50008xS0C	100
9	CAELAM50009xS0C	90
10	CAELAM50010xS0C	85
11	CAELAM50011xS0C	75
12	CAELAM50012xS0C	65
13	CAELAM50013xS0C	65
14	CAELAM50014xS0C	55
15	CAELAM50015xS0C	50
16	CAELAM50016xS0C	50
17	CAELAM50017xS0C	50
18	CAELAM50018xS0C	50
19	CAELAM50019xS0C	45
20	CAELAM50020xS0C	40
21	CAELAM50021xS0C	40
22	CAELAM50022xS0C	35
23	CAELAM50023xS0C	35
24	CAELAM50024xS0C	35

Ordering code

CAEL AM 500 xx x S0C

① ② ③ ④ ⑤ ⑥

- ① Type
- ② Product style
- ③ Pitch
- ④ Poles (02-24)
- ⑤ Color
- ⑥ Standard S0C or Custom SXX

Color

0 Black	5 Green
1 Brown	6 Blue
2 Red	7 Pale grey
3 Orange	8 Dark grey
4 Yellow	9 White

Key Commercial data

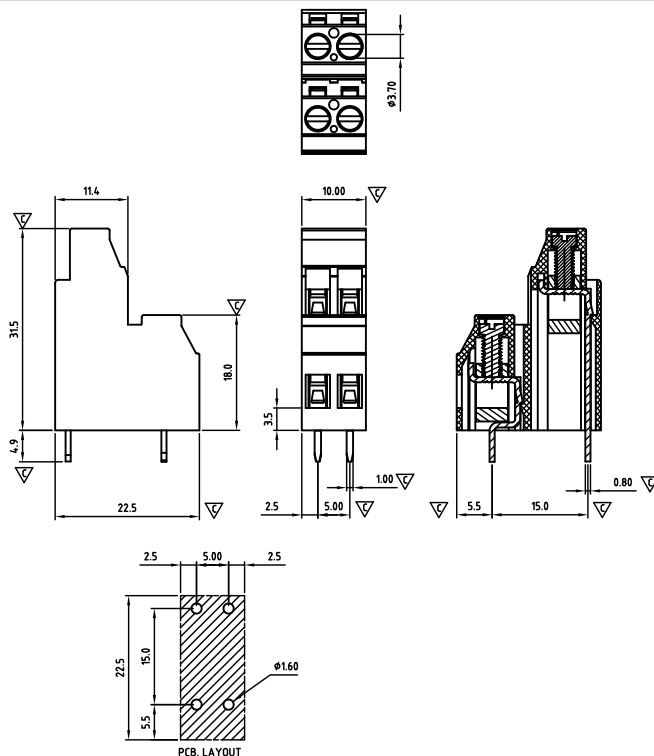
Custom tariff number	8536901000
Country of origin	CN (China)





CAFGHM500-SERIES

Pitch 5,00mm



Tolerance	
x.	+/- 0,50
x.x	+/- 0,30
x.xx	+/- 0,10
x°	+/- 1°

Units:mm

Technical data

Technical data in accordance with UL/CUL

	Use Group	B	C	D
Nominal voltage (V)		300	-	300
Nominal current (A)		20	-	10
Connection capacity(AWG)		30-12	-	30-12

Technical data in accordance with IEC

Rated insulation voltage at pollution degree 2 (V)	400		
Rated current/conductor cross-section (A/mm ²)	24 / 2.5		
Solid/stranded(mm ²)	0.2-4 / 0.2-2.5		
Surge voltage category/pollution degree	III / 3	III / 2	II / 2
Rated insulation voltage(V)	250	400	630
Rated surge voltage(kV)	4	4	4

General data

Stripping length(mm)	7-8
Screw thread	M3.0
Tightening torque(Nm)	0.5-0.6
Insulation Withstanding Voltage	AC 1600 / 1min
Insulation Resistance	1000M Ω or more at DC500V
Using temperature range	-40°C-115°C

Materials

Insulation material group	PA 66 I UL94 -V0
Contact	Brass, Tin plated
Cage	Brass, Ni plated
Screw	Steel, Zn plated

Packing information

Poles	Order Number	SPQ
2*2	CAFGHM50804x000	110

Ordering code

CAFG HM 500 xx x XXX

① ② ③ ④ ⑤ ⑥

- ① Type
- ② Product style
- ③ Pitch
- ④ Poles (04)
- ⑤ Color
- ⑥ Standard 000 or Custom XXX

Color

0 Black	5 Green
1 Brown	6 Blue
2 Red	G Pale grey
3 Orange	8 Dark grey
4 Yellow	9 White

Key Commercial data

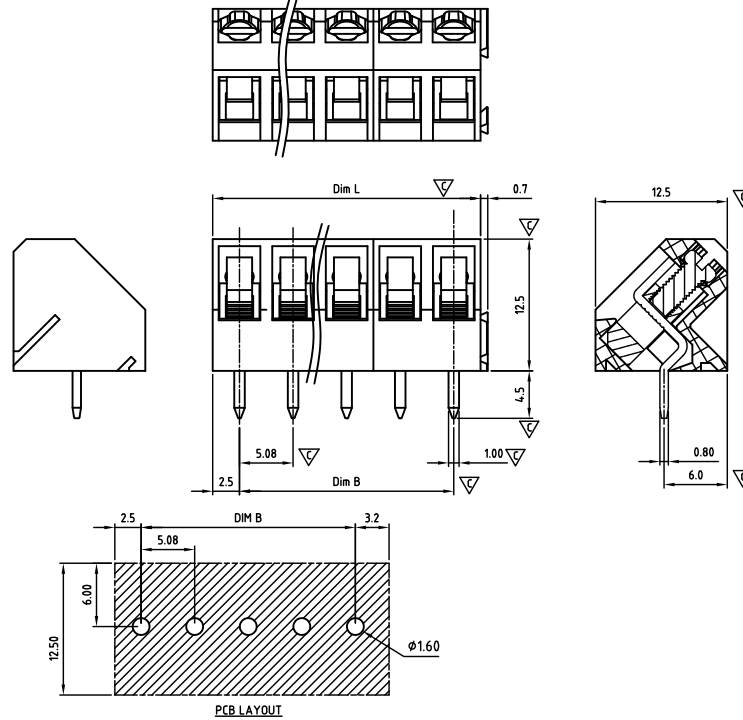
Custom tariff number	8536901000
Country of origin	CN (China)





CAEHAM508-SERIES

cULus E501953



Critical dimension: ▽

Dim.L=Px5.08		
Dim.B=(P-1)x5.08		
P=Number of poles (02-24)		
	Dim B	Dim L
0-30mm	+/- 0,15	+/- 0,20
over 30-60mm	+/- 0,20	+/- 0,25
over 60-90mm	+/- 0,25	+/- 0,30
over 90mm	+/- 0,30	+/- 0,40

Tolerance	
x.	+/- 0,50
x.x	+/- 0,30
x.xx	+/- 0,10
x°	+/- 1°
Units:mm	

Technical data

Technical data in accordance with UL/CUL

	Use Group	B	C	D
Nominal voltage (V)		300	-	300
Nominal current (A)		15	-	10
Connection capacity(AWG)		24-12	-	24-12

Technical data in accordance with IEC

Rated insulation voltage at pollution degree 2 (V)	250		
Rated current/conductor cross-section (A/mm ²)	24 / 2.5		
Solid/stranded(mm ²)	0.5-2,5 / 0.5-2.5		
Surge voltage category/pollution degree	III / 3	III / 2	II / 2
Rated insulation voltage(V)	250	400	630
Rated surge voltage(kV)	4	4	4

General data

Stripping length(mm)	6-7
Screw thread	M2.5
Tightening torque(Nm)	0.40-0.45
Insulation Withstanding Voltage	AC 1600 / 1min
Insulation Resistance	1000MΩ or more at DC500V
Using temperature range	-40°C-115°C

Materials

Insulation material group	PA 66 I UL94 -V0
Contact	Brass, Tin plated
Cage	Brass, Ni plated
Screw	Steel, Zn plated

Packing information

Poles	Order Number	SPQ
2	CAEHAM50802x000	500
3	CAEHAM50803x000	350
4	CAEHAM50804x000	250
5	CAEHAM50805x000	200
6	CAEHAM50806x000	150
7	CAEHAM50807x000	150
8	CAEHAM50808x000	125
9	CAEHAM50809x000	110
10	CAEHAM50810x000	100
11	CAEHAM50811x000	100
12	CAEHAM50812x000	90
13	CAEHAM50813x000	64
14	CAEHAM50814x000	64
15	CAEHAM50815x000	64
16	CAEHAM50816x000	64
17	CAEHAM50817x000	64
18	CAEHAM50818x000	64
19	CAEHAM50819x000	60
20	CAEHAM50820x000	32
21	CAEHAM50821x000	32
22	CAEHAM50822x000	32
23	CAEHAM50823x000	32
24	CAEHAM50824x000	32

Ordering code

CAEH AM 508 xx x XXX

① ② ③ ④ ⑤ ⑥

- ① Type
- ② Product style
- ③ Pitch
- ④ Poles (02-24)
- ⑤ Color
- ⑥ Standard 000 or Custom XXX

Color

0 Black	5 Green
1 Brown	6 Blue
2 Red	G Pale grey
3 Orange	8 Dark grey
4 Yellow	9 White

Key Commercial data

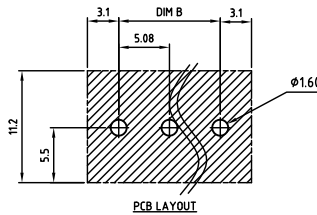
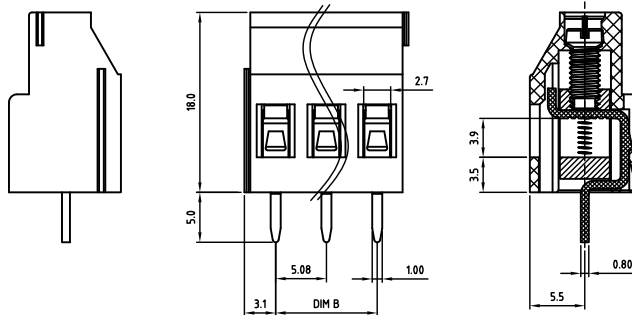
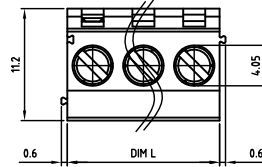
Custom tariff number	8536901100
Country of origin	CN (China)





CAEJHM508-SERIES

cULus E501953



Critical dimension: ∇

Dim.L=Px5.08		
Dim.B=(P-1)x5.08		
P=Number of poles (02-24)		
	Dim B	Dim L
0-30mm	+/- 0,15	+/- 0,20
over 30-60mm	+/- 0,20	+/- 0,25
over 60-90mm	+/- 0,25	+/- 0,30
over 90mm	+/- 0,30	+/- 0,40

Tolerance	
x.	+/- 0,50
x.x	+/- 0,30
x.xx	+/- 0,10
x°	+/- 1°
	Units:mm

Technical data

Technical data in accordance with UL/CUL

	Use Group	B	C	D
Nominal voltage (V)		300	-	300
Nominal current (A)		20	-	10
Connection capacity(AWG)		30-12	-	30-12

Technical data in accordance with IEC

Rated insulation voltage at pollution degree 2 (V)	400		
Rated current/conductor cross-section (A/mm ²)	24 / 2.5		
Solid/stranded(mm ²)	0.2-4 / 0.2-2.5		
Surge voltage category/pollution degree	III / 3	III / 2	II / 2
Rated insulation voltage(V)	250	400	630
Rated surge voltage(kV)	4	4	4

General data

Stripping length(mm)	7-8
Screw thread	M3.0
Tightening torque(Nm)	0.5-0.6
Insulation Withstanding Voltage	AC 1600 / 1min
Insulation Resistance	1000MΩ or more at DC500V
Using temperature range	-40°C-115°C

Materials

Insulation material group	PA 66 I UL94 -V0
Contact	Brass, Tin plated
Cage	Brass, Ni plated
Screw	Steel, Zn plated

Packing information

Poles	Order Number	SPQ
2	CAEJHM50802xA00	420
3	CAEJHM50803xA00	270
4	CAEJHM50804xA00	270
5	CAEJHM50805xA00	175
6	CAEJHM50806xA00	150
7	CAEJHM50807xA00	120
8	CAEJHM50808xA00	100
9	CAEJHM50809xA00	100
10	CAEJHM50810xA00	75
11	CAEJHM50811xA00	75
12	CAEJHM50812xA00	75
13	CAEJHM50813xA00	50
14	CAEJHM50814xA00	50
15	CAEJHM50815xA00	50
16	CAEJHM50816xA00	50
17	CAEJHM50817xA00	50
18	CAEJHM50818xA00	50
19	CAEJHM50819xA00	50
20	CAEJHM50820xA00	50
21	CAEJHM50821xA00	25
22	CAEJHM50822xA00	25
23	CAEJHM50823xA00	25
24	CAEJHM50824xA00	25

Ordering code

CAEJ HM 508 xx x Axx

① ② ③ ④ ⑤ ⑥

- ① Type
- ② Product style
- ③ Pitch
- ④ Poles (02-24)
- ⑤ Color
- ⑥ Standard A00 or Custom XXX

Color

0 Black	5 Green
1 Brown	6 Blue
2 Red	G Pale grey
3 Orange	8 Dark grey
4 Yellow	9 White

Key Commercial data

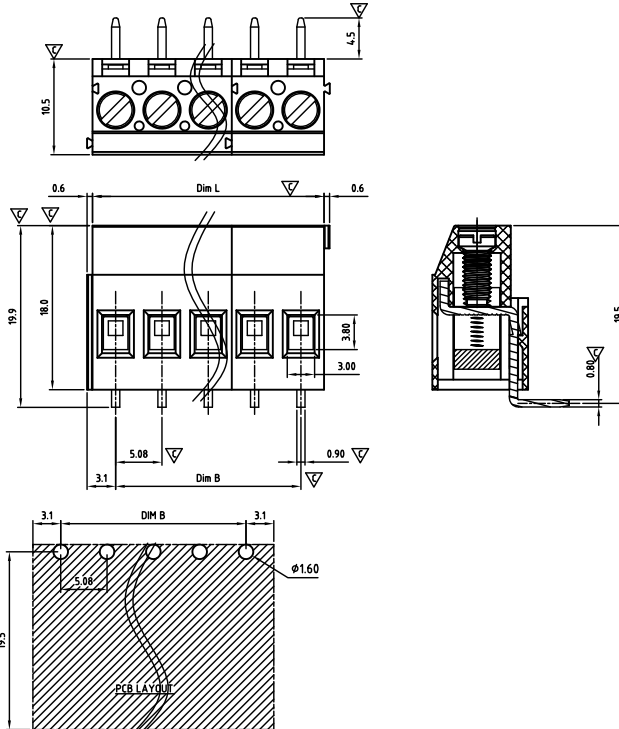
Custom tariff number	8536901000
Country of origin	CN (China)





CAEJVM508-SERIES

cULus E501953



Critical dimension: ▽

Dim.L=Px5.08		
Dim.B=(P-1)x5.08		
P=Number of poles (02-24)		
	Dim B	Dim L
0-30mm	+/- 0,15	+/- 0,20
over 30-60mm	+/- 0,20	+/- 0,25
over 60-90mm	+/- 0,25	+/- 0,30
over 90mm	+/- 0,30	+/- 0,40

Tolerance	
x.	+/- 0,50
x.x	+/- 0,30
x.xx	+/- 0,10
x°	+/- 1°
Units:mm	

Technical data

Technical data in accordance with UL/CUL

	Use Group	B	C	D
Nominal voltage (V)		300	-	300
Nominal current (A)		20	-	10
Connection capacity(AWG)		30-12	-	30-12

Technical data in accordance with IEC

Rated insulation voltage at pollution degree 2 (V)	400		
Rated current/conductor cross-section (A/mm ²)	24 / 2.5		
Solid/stranded(mm ²)	0.2-4 / 0.2-2.5		
Surge voltage category/pollution degree	III / 3	III / 2	II / 2
Rated insulation voltage(V)	250	400	630
Rated surge voltage(kV)	4	4	4

General data

Stripping length(mm)	7-8
Screw thread	M3.0
Tightening torque(Nm)	0.5-0.6
Insulation Withstanding Voltage	AC 1600 / 1min
Insulation Resistance	1000MΩ or more at DC500V
Using temperature range	-40°C-115°C

Materials

Insulation material group	PA 66 I UL94 -V0
Contact	Brass, Tin plated
Cage	Brass, Ni plated
Screw	Steel, Zn plated

Packing information

Poles	Order Number	SPQ
2	CAEJVM50802x000	420
3	CAEJVM50803x000	270
4	CAEJVM50804x000	270
5	CAEJVM50805x000	175
6	CAEJVM50806x000	150
7	CAEJVM50807x000	120
8	CAEJVM50808x000	100
9	CAEJVM50809x000	100
10	CAEJVM50810x000	75
11	CAEJVM50811x000	75
12	CAEJVM50812x000	75
13	CAEJVM50813x000	50
14	CAEJVM50814x000	50
15	CAEJVM50815x000	50
16	CAEJVM50816x000	50
17	CAEJVM50817x000	50
18	CAEJVM50818x000	50
19	CAEJVM50819x000	50
20	CAEJVM50820x000	50
21	CAEJVM50821x000	25
22	CAEJVM50822x000	25
23	CAEJVM50823x000	25
24	CAEJVM50824x000	25

Ordering code

CAEJVM 508 xx x XXX

① ② ③ ④ ⑤ ⑥

- ① Type
- ② Product style
- ③ Pitch
- ④ Poles (02-24)
- ⑤ Color
- ⑥ Standard 000 or Custom XXX

Color

0 Black	5 Green
1 Brown	6 Blue
2 Red	G Pale grey
3 Orange	8 Dark grey
4 Yellow	9 White

Key Commercial data

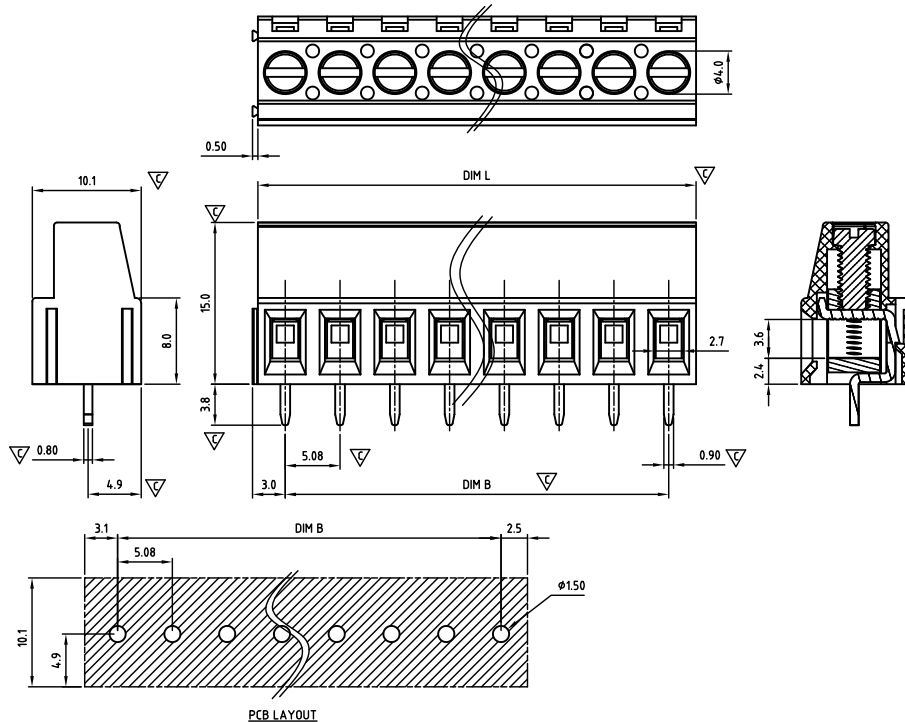
Custom tariff number	8536901100
Country of origin	CN (China)





CAEKHS508-SERIES

cULus E501953



Critical dimension: ∇

Dim.L=Px5.08		
Dim.B=(P-1)x5.08		
P=Number of poles (02-24)		
	Dim B	Dim L
0-30mm	+/- 0,15	+/- 0,20
over 30-60mm	+/- 0,20	+/- 0,25
over 60-90mm	+/- 0,25	+/- 0,30
over 90mm	+/- 0,30	+/- 0,40

Tolerance	
x.	+/- 0,50
x.x	+/- 0,30
x.xx	+/- 0,10
x°	+/- 1°
ϕ	Units:mm

Technical data

Technical data in accordance with UL/CUL

	Use Group	B	C	D
Nominal voltage (V)	300	-	-	-
Nominal current (A)	15	-	-	-
Connection capacity(AWG)	30-12	-	-	-

Technical data in accordance with IEC

Rated insulation voltage at pollution degree 2 (V)	400
Rated current/conductor cross-section (A/mm ²)	17.5 / 2.5
Solid/stranded(mm ²)	0.14-2.5 / 0.14-2.5
Surge voltage category/pollution degree	III / 3 III / 2 II / 2
Rated insulation voltage(V)	250 400 630
Rated surge voltage(kV)	4 4 4

General data

Stripping length(mm)	6-7
Screw thread	M2.5
Tightening torque(Nm)	0.40-0.45
Insulation Withstanding Voltage	AC 1600 / 1min
Insulation Resistance	1000M Ω or more at DC500V
Using temperature range	-40°C-115°C

Materials

Insulation material group	PA 66 I UL94 -V0
Contact	Brass, Tin plated
Cage	Brass, Ni plated
Screw	Steel, Zn plated

Packing information

Poles	Order Number	SPQ
2	CAEKHS50802x000	400
3	CAEKHS50803x000	250
4	CAEKHS50804x000	200
5	CAEKHS50805x000	160
6	CAEKHS50806x000	128
7	CAEKHS50807x000	105
8	CAEKHS50808x000	105
9	CAEKHS50809x000	70
10	CAEKHS50810x000	70
11	CAEKHS50811x000	70
12	CAEKHS50812x000	70
13	CAEKHS50813x000	35
14	CAEKHS50814x000	35
15	CAEKHS50815x000	35
16	CAEKHS50816x000	35
17	CAEKHS50817x000	35
18	CAEKHS50818x000	35
19	CAEKHS50819x000	35
20	CAEKHS50820x000	35
21	CAEKHS50821x000	35
22	CAEKHS50822x000	35
23	CAEKHS50823x000	35
24	CAEKHS50824x000	35

Ordering code

CAEK HS 508 xx x xxx

① ② ③ ④ ⑤ ⑥

- ① Type
- ② Product style
- ③ Pitch
- ④ Poles (02-24)
- ⑤ Color
- ⑥ Standard 000 or Custom XXX

Color

0 Black	5 Green
1 Brown	6 Blue
2 Red	G Pale grey
3 Orange	8 Dark grey
4 Yellow	9 White

Key Commercial data

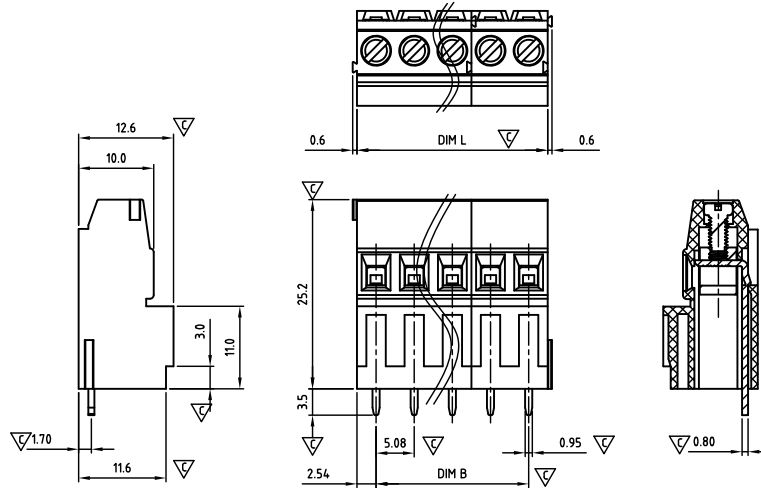
Custom tariff number	8536901100
Country of origin	CN (China)





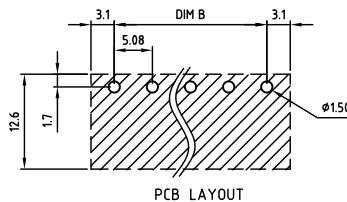
CAEQHM508-SERIES

cULus E501953



Critical dimension: ∇

Dim.L=Px5.08		
Dim.B=(P-1)x5.08		
P=Number of poles (02-24)		
	Dim B	Dim L
0-30mm	+/- 0,15	+/- 0,20
over 30-60mm	+/- 0,20	+/- 0,25
over 60-90mm	+/- 0,25	+/- 0,30
over 90mm	+/- 0,30	+/- 0,40



Tolerance	
x.	+/- 0,50
x.x	+/- 0,30
x.xx	+/- 0,10
x°	+/-1°
Units:mm	

Pitch 5,08mm

Technical data

Technical data in accordance with UL/CUL

	Use Group	B	C	D
Nominal voltage (V)		300	-	300
Nominal current (A)		20	-	10
Connection capacity(AWG)		30-12	-	30-12

Technical data in accordance with IEC

Rated insulation voltage at pollution degree 2 (V)	400		
Rated current/conductor cross-section (A/mm ²)	17.5 / 2.5		
Solid/stranded(mm ²)	0.14-2.5 / 0.14-2.5		
Surge voltage category/pollution degree	III / 3	III / 2	II / 2
Rated insulation voltage(V)	250	400	630
Rated surge voltage(kV)	4	4	4

General data

Stripping length(mm)	6-7
Screw thread	M2.5
Tightening torque(Nm)	0.40-0.45
Insulation Withstanding Voltage	AC 1600 / 1min
Insulation Resistance	1000M Ω or more at DC500V
Using temperature range	-40°C-115°C

Materials

Insulation material group	PA 66 I UL94 -V0
Contact	Brass, Tin plated
Cage	Brass, Ni plated
Screw	Steel, Zn plated

Packing information

Poles	Order Number	SPQ
2	CAEQHM50802x000	220
3	CAEQHM50803x000	180
4	CAEQHM50804x000	110
5	CAEQHM50805x000	110
6	CAEQHM50806x000	90
7	CAEQHM50807x000	80
8	CAEQHM50808x000	80
9	CAEQHM50809x000	60
10	CAEQHM50810x000	55
11	CAEQHM50811x000	55
12	CAEQHM50812x000	55
13	CAEQHM50813x000	45
14	CAEQHM50814x000	40
15	CAEQHM50815x000	30
16	CAEQHM50816x000	30
17	CAEQHM50817x000	30
18	CAEQHM50818x000	25
19	CAEQHM50819x000	25
20	CAEQHM50820x000	25
21	CAEQHM50821x000	25
22	CAEQHM50822x000	25
23	CAEQHM50823x000	25
24	CAEQHM50824x000	25

Ordering code

CAEQ HM 508 xx x XXX

① ② ③ ④ ⑤ ⑥

- ① Type
- ② Product style
- ③ Pitch
- ④ Poles (02-24)
- ⑤ Color
- ⑥ Standard 000 or Custom XXX

Color

0 Black	5 Green
1 Brown	6 Blue
2 Red	G Pale grey
3 Orange	8 Dark grey
4 Yellow	9 White

Key Commercial data

Custom tariff number	8536901000
Country of origin	CN (China)

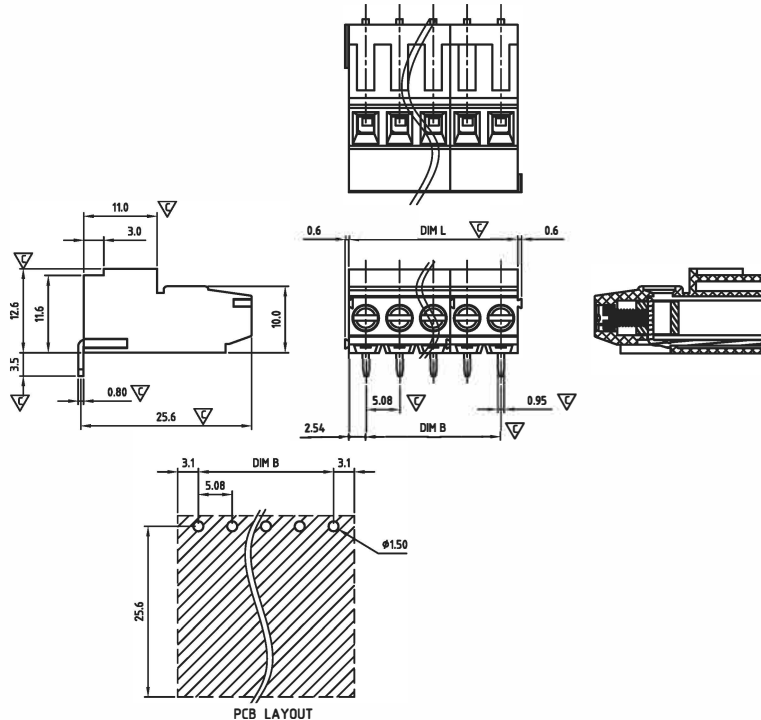




PCB SCREW RISING CLAMP SYSTEM

CAEQHM508-D SERIES

cULus E501953



Critical dimension: ∇

Dim.L= $P \times 5.08$

Dim.B= $(P-1) \times 5.08$

P=Number of poles (02-24)

	Dim B	Dim L
0-30mm	+/- 0,15	+/- 0,20
over 30-60mm	+/- 0,20	+/- 0,25
over 60-90mm	+/- 0,25	+/- 0,30
over 90mm	+/- 0,30	+/- 0,40

Tolerance	
x	+/- 0,50
x.x	+/- 0,30
x.xx	+/- 0,10
x°	+/-1°
	Units:mm

Technical data

Technical data in accordance with UL/CUL

	Use Group	B	C	D
Nominal voltage (V)		300	-	300
Nominal current (A)		20	-	10
Connection capacity (AWG)		30-12	-	30-12

Technical data in accordance with IEC

Rated insulation voltage at pollution degree 2 (V)	400		
Rated current/conductor cross-section (A/mm ²)	17.5 / 2.5		
Solid/stranded(mm ²)	0.14-2.5 / 0.14-2.5		
Surge voltage category/pollution degree	III / 3	III / 2	II / 2
Rated insulation voltage(V)	250	400	630
Rated surge voltage(kV)	4	4	4

General data

Stripping length(mm)	6-7
Screw thread	M2.5
Tightening torque(Nm)	0.40-0.45
Insulation Withstanding Voltage	AC 1600 / 1min
Insulation Resistance	1000M Ω or more at DC500V
Using temperature range	-40°C-115°C

Materials

Insulation material group	PA 66 UL94 -V0
Contact	Brass, Tin plated
Cage	Brass, Ni plated
Screw	Steel, Zn plated

Packing information

Poles	Order Number	SPQ
2	CAEQHM50802xD00	220
3	CAEQHM50803xD00	180
4	CAEQHM50804xD00	110
5	CAEQHM50805xD00	110
6	CAEQHM50806xD00	90
7	CAEQHM50807xD00	80
8	CAEQHM50808xD00	80
9	CAEQHM50809xD00	60
10	CAEQHM50810xD00	55
11	CAEQHM50811xD00	55
12	CAEQHM50812xD00	55
13	CAEQHM50813xD00	45
14	CAEQHM50814xD00	40
15	CAEQHM50815xD00	30
16	CAEQHM50816xD00	30
17	CAEQHM50817xD00	30
18	CAEQHM50818xD00	25
19	CAEQHM50819xD00	25
20	CAEQHM50820xD00	25
21	CAEQHM50821xD00	25
22	CAEQHM50822xD00	25
23	CAEQHM50823xD00	25
24	CAEQHM50824xD00	25

Ordering code

CAEQ HM 508 xx x DXX

① ② ③ ④ ⑤ ⑥

- ① Type
- ② Product style
- ③ Pitch
- ④ Poles (02-24)
- ⑤ Color
- ⑥ Standard D00 or Custom XXX

Color

0 Black	5 Green
1 Brown	6 Blue
2 Red	G Pale grey
3 Orange	8 Dark grey
4 Yellow	9 White

Key Commercial data

Custom tariff number	8536901000
Country of origin	CN (China)

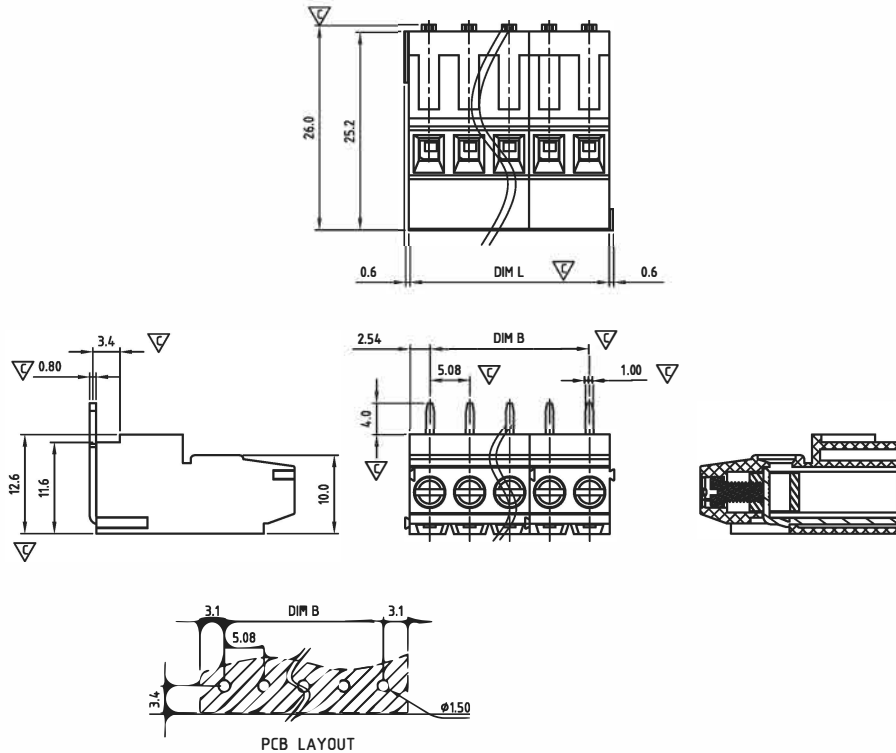




PCB SCREW RISING CLAMP SYSTEM

CAEQHM508-U SERIES

cULus E501953



Critical dimension: 

Dim.L=Px5.08

Dim.B=(P-1)x5.08

P=Number of poles (02-24)

	Dim B	Dim L
0-30mm	+/- 0,15	+/- 0,20
over 30-60mm	+/- 0,20	+/- 0,25
over 60-90mm	+/- 0,25	+/- 0,30
over 90mm	+/- 0,30	+/- 0,40

Tolerance	
x	+/- 0,50
x.x	+/- 0,30
x.xx	+/- 0,10
x°	+/-1°

Units:mm

Technical data

Technical data in accordance with UL/CUL

	Use Group	B	C	D
Nominal voltage (V)		300	-	300
Nominal current (A)		20	-	10
Connection capacity (AWG)		30-12	-	30-12

Technical data in accordance with IEC

Rated insulation voltage at pollution degree 2 (V)	400		
Rated current/conductor cross-section (A/mm ²)	17.5 / 2.5		
Solid/stranded(mm ²)	0.14-2.5 / 0.14-2.5		
Surge voltage category/pollution degree	III / 3	III / 2	II / 2
Rated insulation voltage(V)	250	400	630
Rated surge voltage(kV)	4	4	4

General data

Stripping length(mm)	6-7
Screw thread	M2.5
Tightening torque(Nm)	0.40-0.45
Insulation Withstanding Voltage	AC 1600 / 1min
Insulation Resistance	1000MΩ or more at DC500V
Using temperature range	-40°C-115°C

Materials

Insulation material group	PA 66 I UL94 -V0
Contact	Brass, Tin plated
Cage	Brass, Ni plated
Screw	Steel, Zn plated

Packing information

Poles	Order Number	SPQ
2	CAEQHM50802xU00	220
3	CAEQHM50803xU00	180
4	CAEQHM50804xU00	110
5	CAEQHM50805xU00	110
6	CAEQHM50806xU00	90
7	CAEQHM50807xU00	80
8	CAEQHM50808xU00	80
9	CAEQHM50809xU00	60
10	CAEQHM50810xU00	55
11	CAEQHM50811xU00	55
12	CAEQHM50812xU00	55
13	CAEQHM50813xU00	45
14	CAEQHM50814xU00	40
15	CAEQHM50815xU00	30
16	CAEQHM50816xU00	30
17	CAEQHM50817xU00	30
18	CAEQHM50818xU00	25
19	CAEQHM50819xU00	25
20	CAEQHM50820xU00	25
21	CAEQHM50821xU00	25
22	CAEQHM50822xU00	25
23	CAEQHM50823xU00	25
24	CAEQHM50824xU00	25

Ordering code

CAEQ HM 508 xx x UXX

① ② ③ ④ ⑤ ⑥

- ① Type
- ② Product style
- ③ Pitch
- ④ Poles (02-24)
- ⑤ Color
- ⑥ Standard U00 or Custom XXX

Color

0 Black	5 Green
1 Brown	6 Blue
2 Red	7 Pale grey
3 Orange	8 Dark grey
4 Yellow	9 White

Key Commercial data

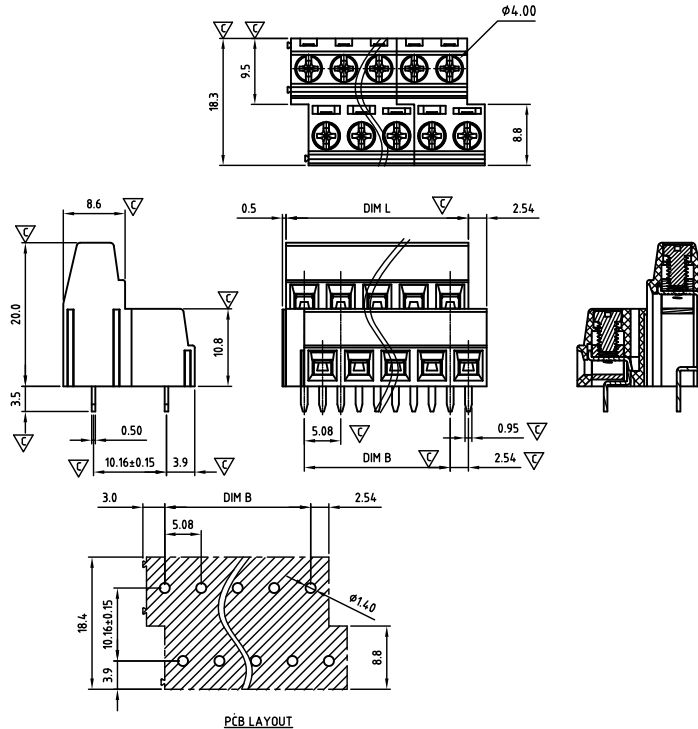
Custom tariff number	8536901000
Country of origin	CN (China)





CAFDH0508-SERIES

cULus E501953



Critical dimension: ∇

Dim.L=Px5.08		
Dim.B=(P-1)x5.08		
P=1/2 Number of poles (04-48)		
	Dim B	Dim L
0-30mm	+/- 0,15	+/- 0,20
over 30-60mm	+/- 0,20	+/- 0,25
over 60-90mm	+/- 0,25	+/- 0,30
over 90mm	+/- 0,30	+/- 0,40

Tolerance	
x.	+/- 0,50
x.x	+/- 0,30
x.xx	+/- 0,10
x°	+/- 1°
\varnothing	Units:mm

Pitch 5,08mm

Technical data

Technical data in accordance with UL/CUL

	Use Group	B	C	D
Nominal voltage (V)		300	-	300
Nominal current (A)		10	-	10
Connection capacity(AWG)		28-16	-	28-16

Technical data in accordance with IEC

Rated insulation voltage at pollution degree 2 (V)		400	
Rated current/conductor cross-section (A/mm ²)		13.5 / 1.5	
Solid/stranded(mm ²)		0.14-1.5 / 0.14-1.5	
Surge voltage category/pollution degree	III / 3	III / 2	II / 2
Rated insulation voltage(V)	250	400	630
Rated surge voltage(kV)	4	4	4

General data

Stripping length(mm)		5-6
Screw thread		M3.0
Tightening torque(Nm)		0.40-0.45
Insulation Withstanding Voltage		AC 1600 / 1min
Insulation Resistance		1000M Ω or more at DC500V
Using temperature range		-40°C-115°C

Materials

Insulation material group		PA 66 I UL94 -V0
Contact		Brass, Tin plated
Cage		Brass, Ni plated
Screw		Steel, Ni plated

Packing information

Poles	Order Number	SPQ
2*2	CAFDHM50804x110	215
2*3	CAFDHM50806x110	210
2*4	CAFDHM50808x110	150
2*5	CAFDHM50810x110	120
2*6	CAFDHM50812x110	105
2*7	CAFDHM50814x110	90
2*8	CAFDHM50816x110	72
2*9	CAFDHM50818x110	70
2*10	CAFDHM50820x110	60
2*11	CAFDHM50822x110	54
2*12	CAFDHM50824x110	35
2*13	CAFDHM50826x110	35
2*14	CAFDHM50828x110	35
2*15	CAFDHM50830x110	35
2*16	CAFDHM50832x110	35
2*17	CAFDHM50834x110	30
2*18	CAFDHM50836x110	30
2*19	CAFDHM50838x110	30
2*20	CAFDHM50840x110	30
2*21	CAFDHM50842x110	30
2*22	CAFDHM50844x110	30
2*23	CAFDHM50846x110	30
2*24	CAFDHM50848x110	30

Ordering code

CAFD HO 508 xx x 110

① ② ③ ④ ⑤ ⑥

- ① Type
- ② Product style
- ③ Pitch
- ④ Poles (04-48)
- ⑤ Color
- ⑥ Standard 110 or Custom XXX

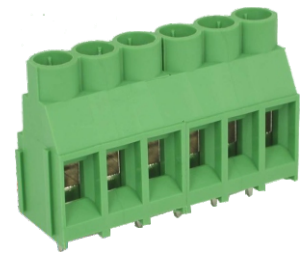
Color

0 Black	5 Green
1 Brown	6 Blue
2 Red	G Pale grey
3 Orange	8 Dark grey
4 Yellow	9 White

Key Commercial data

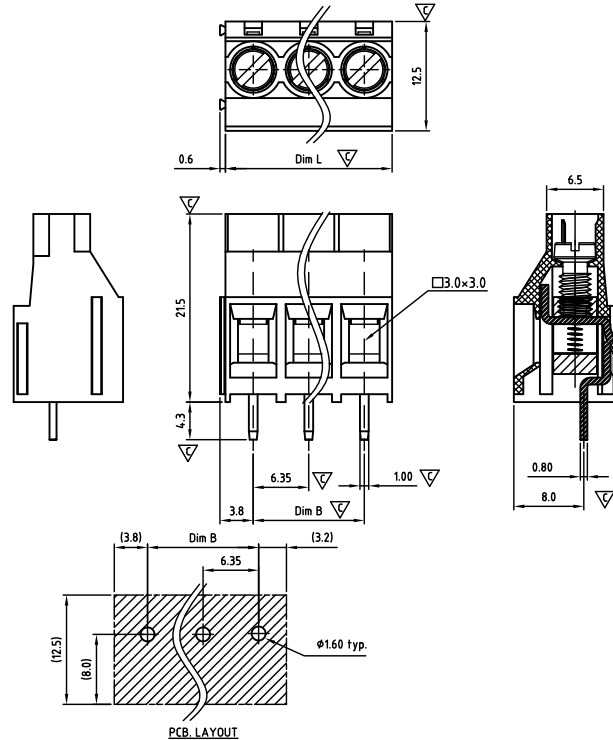
Custom tariff number	8536901000
Country of origin	CN (China)





CAFMMH635-SERIES

cULus E501953



Critical dimension: ∇

Dim.L=Px6.35		
Dim.B=(P-1)x6.35		
P=Number of poles (02-16)		
	Dim B	Dim L
0-30mm	+/- 0,15	+/- 0,20
over 30-60mm	+/- 0,20	+/- 0,25
over 60-90mm	+/- 0,25	+/- 0,30
over 90mm	+/- 0,30	+/- 0,40

Tolerance	
x.	+/- 0,50
x.x	+/- 0,30
x.xx	+/- 0,10
x°	+/- 1°
ϕ	Units:mm

Technical data

Technical data in accordance with UL/CUL

	Use Group	B	C	D
Nominal voltage (V)		300	150	300
Nominal current (A)		30	30	10
Connection capacity(AWG)		30-10	30-10	30-10

Technical data in accordance with IEC

Rated insulation voltage at pollution degree 2 (V)	630		
Rated current/conductor cross-section (A/mm ²)	32 / 4		
Solid/stranded(mm ²)	0.2-4 / 0.2-4		
Surge voltage category/pollution degree	III / 3	III / 2	II / 2
Rated insulation voltage(V)	500	630	1000
Rated surge voltage(kV)	6	6	6

General data

Stripping length(mm)	7-8
Screw thread	M3.5
Tightening torque(Nm)	0.5-0.8
Insulation Withstanding Voltage	AC 1600 / 1min
Insulation Resistance	1000M Ω or more at DC500V
Using temperature range	-40°C-115°C

Materials

Insulation material group	PA 66 I UL94 -V0
Contact	Brass, Tin plated
Cage	Brass, Ni plated
Screw	Steel, Zn plated

Packing information

Poles	Order Number	SPQ
2	CAFMMH63502x000	215
3	CAFMMH63503x000	140
4	CAFMMH63504x000	105
5	CAFMMH63505x000	120
6	CAFMMH63506x000	100
7	CAFMMH63507x000	80
8	CAFMMH63508x000	60
9	CAFMMH63509x000	60
10	CAFMMH63510x000	60
11	CAFMMH63511x000	40
12	CAFMMH63512x000	40
13	CAFMMH63513x000	40
14	CAFMMH63514x000	40
15	CAFMMH63515x000	40
16	CAFMMH63516x000	30

Ordering code

CAFM HM 635 xx x xxx

① ② ③ ④ ⑤ ⑥

- ① Type
- ② Product style
- ③ Pitch
- ④ Poles (02-16)
- ⑤ Color
- ⑥ Standard 000 or Custom XXX

Color

0 Black	5 Green
1 Brown	6 Blue
2 Red	G Pale grey
3 Orange	8 Dark grey
4 Yellow	9 White

Key Commercial data

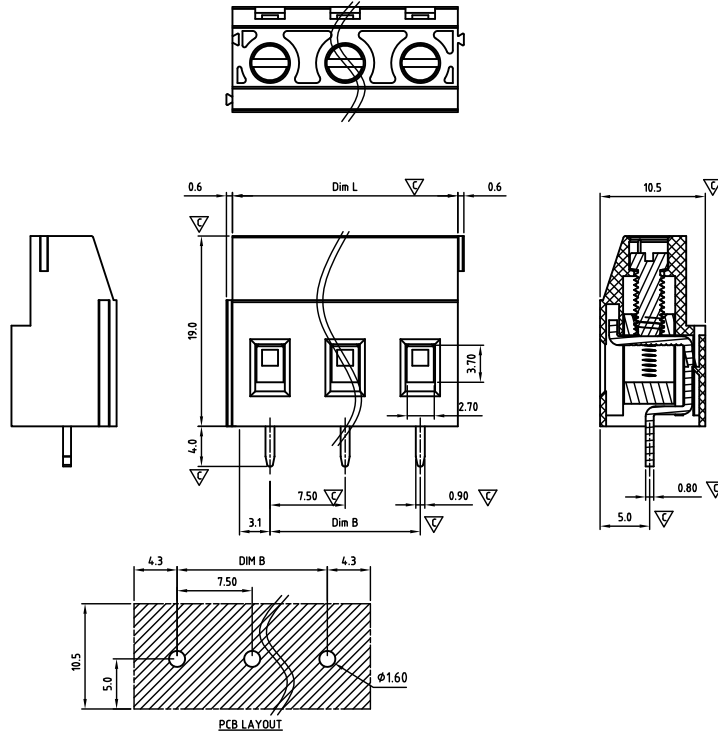
Custom tariff number	8536901100
Country of origin	CN (China)





CAEJHM750-SERIES

cULus E501953



Critical dimension: ∇

Dim.L=Px7.5		
Dim.B=(P-1)x7.5		
P=Number of poles (02-16)		
	Dim B	Dim L
0-30mm	+/- 0,15	+/- 0,20
over 30-60mm	+/- 0,20	+/- 0,25
over 60-90mm	+/- 0,25	+/- 0,30
over 90mm	+/- 0,30	+/- 0,40

Tolerance	
x.	+/- 0,50
x.x	+/- 0,30
x.xx	+/- 0,10
x°	+/- 1°
	Units:mm

Technical data

Technical data in accordance with UL/CUL

	Use Group	B	C	D
Nominal voltage (V)		300	-	300
Nominal current (A)		20	-	10
Connection capacity(AWG)		30-12	-	30-12

Technical data in accordance with IEC

Rated insulation voltage at pollution degree 2 (V)	630		
Rated current/conductor cross-section (A/mm ²)	24 / 2.5		
Solid/stranded(mm ²)	0.2-4 / 0.2-2.5		
Surge voltage category/pollution degree	III / 3	III / 2	II / 2
Rated insulation voltage(V)	600	630	1000
Rated surge voltage(kV)	6	6	6

General data

Stripping length(mm)	7-8
Screw thread	M3.0
Tightening torque(Nm)	0.5-0.6
Insulation Withstanding Voltage	AC 1600 / 1min
Insulation Resistance	1000M Ω or more at DC500V
Using temperature range	-40°C-115°C

Materials

Insulation material group	PA 66 I UL94 -V0
Contact	Brass, Tin plated
Cage	Brass, Ni plated
Screw	Steel, Zn plated

Packing information

Poles	Order Number	SPQ
2	CAEJHM75002x000	300
3	CAEJHM75003x000	200
4	CAEJHM75004x000	120
5	CAEJHM75005x000	120
6	CAEJHM75006x000	75
7	CAEJHM75007x000	75
8	CAEJHM75008x000	50
9	CAEJHM75009x000	50
10	CAEJHM75010x000	50
11	CAEJHM75011x000	50
12	CAEJHM75012x000	50
13	CAEJHM75013x000	25
14	CAEJHM75014x000	25
15	CAEJHM75015x000	25
16	CAEJHM75016x000	25

Ordering code

CAEJ HM 750 xx x xxx

① ② ③ ④ ⑤ ⑥

- ① Type
- ② Product style
- ③ Pitch
- ④ Poles (02-16)
- ⑤ Color
- ⑥ Standard 000 or Custom XXX

Color

0 Black	5 Green
1 Brown	6 Blue
2 Red	G Pale grey
3 Orange	8 Dark grey
4 Yellow	9 White

Key Commercial data

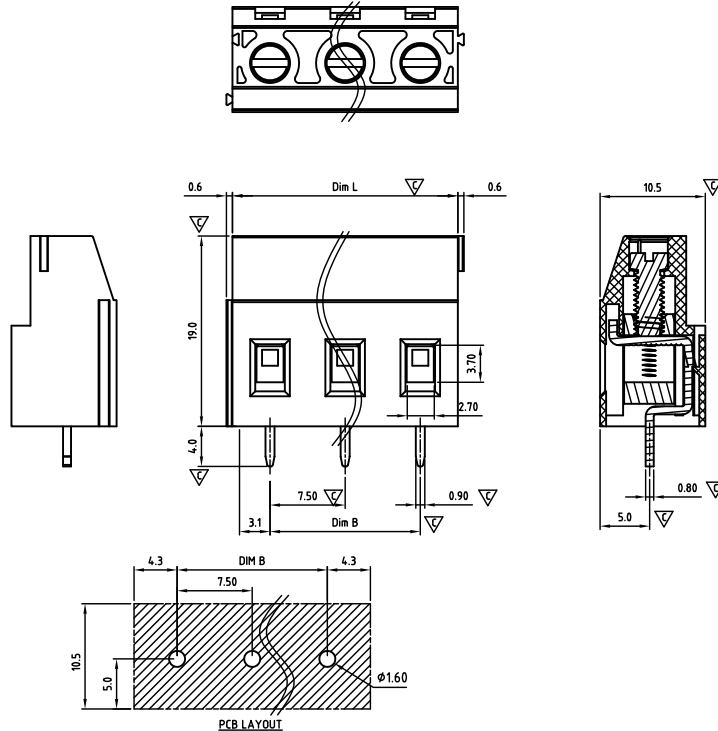
Custom tariff number	8536901000
Country of origin	CN (China)





CAEJHS750-SERIES

cULus E501953



Critical dimension: ∇

Dim.L=Px7.5		
Dim.B=(P-1)x7.5		
P=Number of poles (02-16)		
	Dim B	Dim L
0-30mm	+/- 0,15	+/- 0,20
over 30-60mm	+/- 0,20	+/- 0,25
over 60-90mm	+/- 0,25	+/- 0,30
over 90mm	+/- 0,30	+/- 0,40

Tolerance	
x.	+/- 0,50
x.x	+/- 0,30
x.xx	+/- 0,10
x°	+/- 1°
\varnothing	Units:mm

Technical data

Technical data in accordance with UL/CUL

	Use Group	B	C	D
Nominal voltage (V)		300	-	300
Nominal current (A)		20	-	10
Connection capacity(AWG)		30-12	-	30-12

Technical data in accordance with IEC

Rated insulation voltage at pollution degree 2 (V)	630		
Rated current/conductor cross-section (A/mm ²)	24 / 2.5		
Solid/stranded(mm ²)	0.2-4 / 0.2-2.5		
Surge voltage category/pollution degree	III / 3	III / 2	II / 2
Rated insulation voltage(V)	600	630	1000
Rated surge voltage(kV)	6	6	6

General data

Stripping length(mm)	7-8
Screw thread	M3.0
Tightening torque(Nm)	0.5-0.6
Insulation Withstanding Voltage	AC 1600 / 1min
Insulation Resistance	1000M Ω or more at DC500V
Using temperature range	-40°C-115°C

Materials

Insulation material group	PA 66 I UL94 -V0
Contact	Brass, Tin plated
Cage	Brass, Ni plated
Screw	Steel, Zn plated

Packing information

Poles	Order Number	SPQ
2	CAEJHS75002x000	300
3	CAEJHS75003x000	200
4	CAEJHS75004x000	120
5	CAEJHS75005x000	120
6	CAEJHS75006x000	75
7	CAEJHS75007x000	75
8	CAEJHS75008x000	50
9	CAEJHS75009x000	50
10	CAEJHS75010x000	50
11	CAEJHS75011x000	50
12	CAEJHS75012x000	50
13	CAEJHS75013x000	25
14	CAEJHS75014x000	25
15	CAEJHS75015x000	25
16	CAEJHS75016x000	25

Ordering code

CAEJ HS 750 xx x XXX

① ② ③ ④ ⑤ ⑥

- ① Type
- ② Product style
- ③ Pitch
- ④ Poles (02-16)
- ⑤ Color
- ⑥ Standard 000 or Custom XXX

Color

0 Black	5 Green
1 Brown	6 Blue
2 Red	G Pale grey
3 Orange	8 Dark grey
4 Yellow	9 White

Key Commercial data

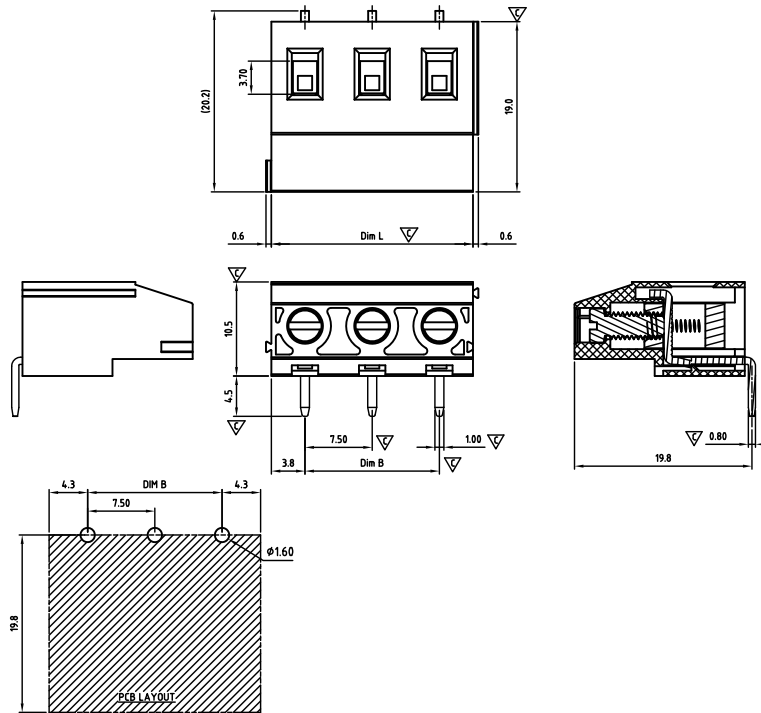
Custom tariff number	8536901000
Country of origin	CN (China)





CAEJVM750-SERIES

cULus E501953



Critical dimension: ∇

Dim.L=Px7.5		
Dim.B=(P-1)x7.5		
P=Number of poles (02-16)		
	Dim B	Dim L
0-30mm	+/- 0,15	+/- 0,20
over 30-60mm	+/- 0,20	+/- 0,25
over 60-90mm	+/- 0,25	+/- 0,30
over 90mm	+/- 0,30	+/- 0,40

Tolerance	
x.	+/- 0,50
x.x	+/- 0,30
x.xx	+/- 0,10
x°	+/- 1°
\varnothing	Units:mm

Pitch 7,50mm

Technical data

Technical data in accordance with UL/CUL

	Use Group	B	C	D
Nominal voltage (V)		300	-	300
Nominal current (A)		20	-	10
Connection capacity(AWG)		30-12	-	30-12

Technical data in accordance with IEC

Rated insulation voltage at pollution degree 2 (V)	630		
Rated current/conductor cross-section (A/mm ²)	24 / 2.5		
Solid/stranded(mm ²)	0.2-4 / 0.2-2.5		
Surge voltage category/pollution degree	III / 3	III / 2	II / 2
Rated insulation voltage(V)	600	630	1000
Rated surge voltage(kV)	6	6	6

General data

Stripping length(mm)	7-8
Screw thread	M3.0
Tightening torque(Nm)	0.5-0.6
Insulation Withstanding Voltage	AC 1600 / 1min
Insulation Resistance	1000M Ω or more at DC500V
Using temperature range	-40°C-115°C

Materials

Insulation material group	PA 66 I UL94 -V0
Contact	Brass, Tin plated
Cage	Brass, Ni plated
Screw	Steel, Zn plated

Packing information

Poles	Order Number	SPQ
2	CAEJVM75002x000	285
3	CAEJVM75003x000	180
4	CAEJVM75004x000	145
5	CAEJVM75005x000	105
6	CAEJVM75006x000	85
7	CAEJVM75007x000	75
8	CAEJVM75008x000	70
9	CAEJVM75009x000	50
10	CAEJVM75010x000	50
11	CAEJVM75011x000	45
12	CAEJVM75012x000	40
13	CAEJVM75013x000	40
14	CAEJVM75014x000	40
15	CAEJVM75015x000	35
16	CAEJVM75016x000	35

Ordering code

CAEJVM 750 xx x xxx

① ② ③ ④ ⑤ ⑥

- ① Type
- ② Product style
- ③ Pitch
- ④ Poles (02-16)
- ⑤ Color
- ⑥ Standard 000 or Custom XXX

Color

0 Black	5 Green
1 Brown	6 Blue
2 Red	G Pale grey
3 Orange	8 Dark grey
4 Yellow	9 White

Key Commercial data

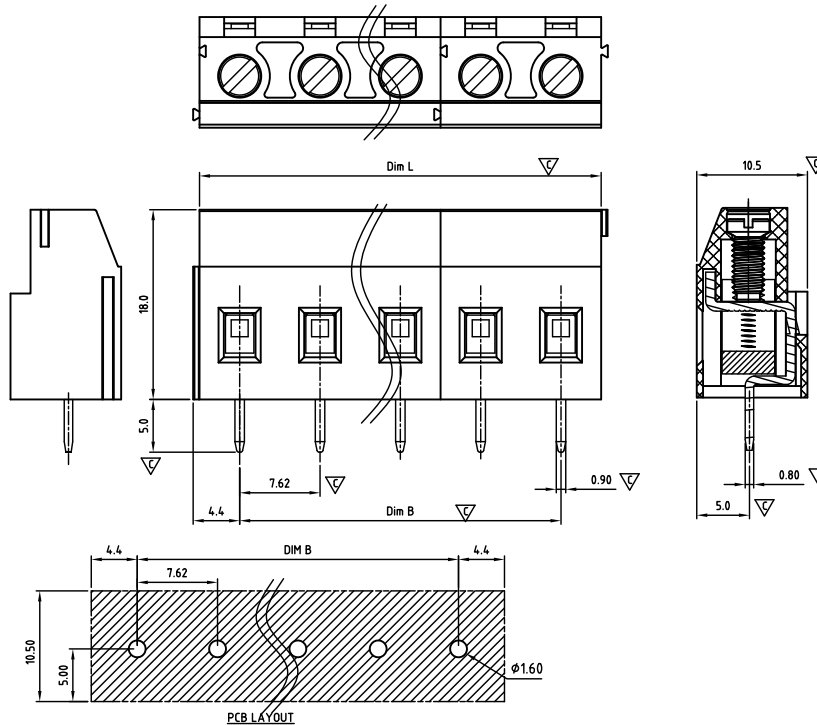
Custom tariff number	8536901000
Country of origin	CN (China)





CAEJHM762-SERIES

cULus E501953



Critical dimension: ∇

Dim L = P x 7.62		
Dim B = (P-1) x 7.62		
P = Number of poles (02-16)		
	Dim B	Dim L
0-30mm	+/- 0,15	+/- 0,20
over 30-60mm	+/- 0,20	+/- 0,25
over 60-90mm	+/- 0,25	+/- 0,30
over 90mm	+/- 0,30	+/- 0,40

Tolerance	
x.	+/- 0,50
x.x	+/- 0,30
x.xx	+/- 0,10
x°	+/- 1°
ϕ	Units:mm

Technical data

Technical data in accordance with UL/CUL

	Use Group	B	C	D
Nominal voltage (V)	300	-	-	300
Nominal current (A)	20	-	-	10
Connection capacity (AWG)	30-12	-	-	30-12

Technical data in accordance with IEC

Rated insulation voltage at pollution degree 2 (V)	630		
Rated current/conductor cross-section (A/mm ²)	24 / 2.5		
Solid/stranded (mm ²)	0.2-4 / 0.2-2.5		
Surge voltage category/pollution degree	III / 3	III / 2	II / 2
Rated insulation voltage (V)	600	630	1000
Rated surge voltage (kV)	6	6	6

General data

Stripping length (mm)	7-8
Screw thread	M3.0
Tightening torque (Nm)	0.5-0.6
Insulation Withstanding Voltage	AC 1600 / 1min
Insulation Resistance	1000M Ω or more at DC500V
Using temperature range	-40°C-115°C

Materials

Insulation material group	PA 66 I UL94 -V0
Contact	Brass, Tin plated
Cage	Brass, Ni plated
Screw	Steel, Zn plated

Packing information

Poles	Order Number	SPQ
2	CAEJHM76202x000	250
3	CAEJHM76203x000	180
4	CAEJHM76204x000	120
5	CAEJHM76205x000	100
6	CAEJHM76206x000	80
7	CAEJHM76207x000	70
8	CAEJHM76208x000	60
9	CAEJHM76209x000	50
10	CAEJHM76210x000	40
11	CAEJHM76211x000	40
12	CAEJHM76212x000	40
13	CAEJHM76213x000	35
14	CAEJHM76214x000	35
15	CAEJHM76215x000	35
16	CAEJHM76216x000	35

Ordering code

CAEJ HM 762 xx x xxx

① ② ③ ④ ⑤ ⑥

- ① Type
- ② Product style
- ③ Pitch
- ④ Poles (02-16)
- ⑤ Color
- ⑥ Standard 000 or Custom XXX

Color

0 Black	5 Green
1 Brown	6 Blue
2 Red	G Pale grey
3 Orange	8 Dark grey
4 Yellow	9 White

Key Commercial data

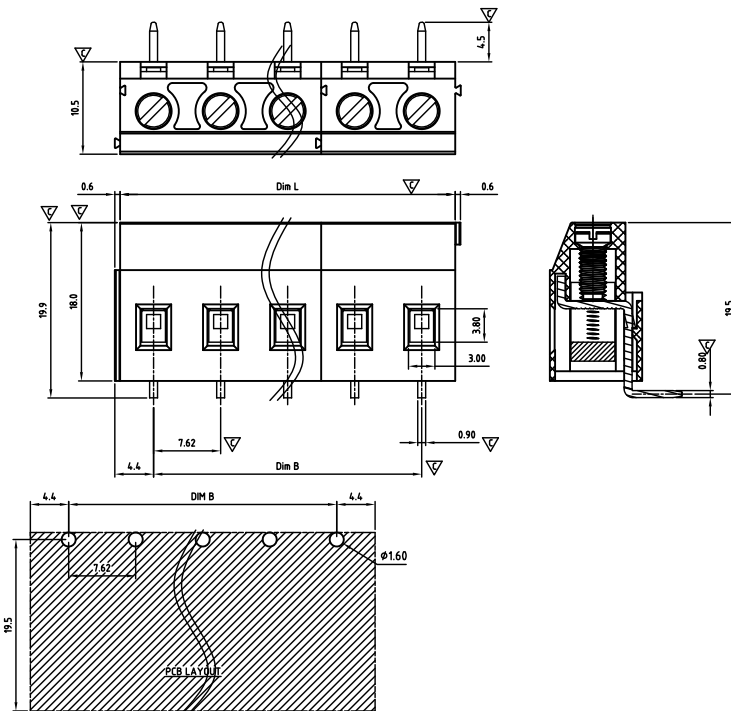
Custom tariff number	8536901000
Country of origin	CN (China)





CAEJVM762-SERIES

cULus E501953



Critical dimension: ▽

Dim.L=Px7.62

Dim.B=(P-1)x7.62

P=Number of poles (02-16)

	Dim B	Dim L
0-30mm	+/- 0,15	+/- 0,20
over 30-60mm	+/- 0,20	+/- 0,25
over 60-90mm	+/- 0,25	+/- 0,30
over 90mm	+/- 0,30	+/- 0,40

Tolerance	
x.	+/- 0,50
x.x	+/- 0,30
x.xx	+/- 0,10
x°	+/- 1°

Units:mm

Technical data

Technical data in accordance with UL/CUL

	Use Group	B	C	D
Nominal voltage (V)	300	-	-	300
Nominal current (A)	20	-	-	10
Connection capacity(AWG)	30-12	-	-	30-12

Technical data in accordance with IEC

Rated insulation voltage at pollution degree 2 (V)	630		
Rated current/conductor cross-section (A/mm ²)	24 / 2.5		
Solid/stranded(mm ²)	0.2-4 / 0.2-2.5		
Surge voltage category/pollution degree	III / 3	III / 2	II / 2
Rated insulation voltage(V)	600	630	1000
Rated surge voltage(kV)	6	6	6

General data

Stripping length(mm)	7-8
Screw thread	M3.0
Tightening torque(Nm)	0.5-0.6
Insulation Withstanding Voltage	AC 1600 / 1min
Insulation Resistance	1000MΩ or more at DC500V
Using temperature range	-40°C-115°C

Materials

Insulation material group	PA 66 I UL94 -V0
Contact	Brass, Tin plated
Cage	Brass, Ni plated
Screw	Steel, Zn plated

Packing information

Poles	Order Number	SPQ
2	CAEJVM76202x000	180
3	CAEJVM76203x000	130
4	CAEJVM76204x000	90
5	CAEJVM76205x000	80
6	CAEJVM76206x000	60
7	CAEJVM76207x000	50
8	CAEJVM76208x000	45
9	CAEJVM76209x000	35
10	CAEJVM76210x000	35
11	CAEJVM76211x000	30
12	CAEJVM76212x000	30
13	CAEJVM76213x000	25
14	CAEJVM76214x000	25
15	CAEJVM76215x000	25
16	CAEJVM76216x000	25

Ordering code

CAEJVM 762 xx x xxx

① ② ③ ④ ⑤ ⑥

- ① Type
- ② Product style
- ③ Pitch
- ④ Poles (02-16)
- ⑤ Color
- ⑥ Standard 000 or Custom XXX

Color

0 Black	5 Green
1 Brown	6 Blue
2 Red	G Pale grey
3 Orange	8 Dark grey
4 Yellow	9 White

Key Commercial data

Custom tariff number	8536901000
Country of origin	CN (China)

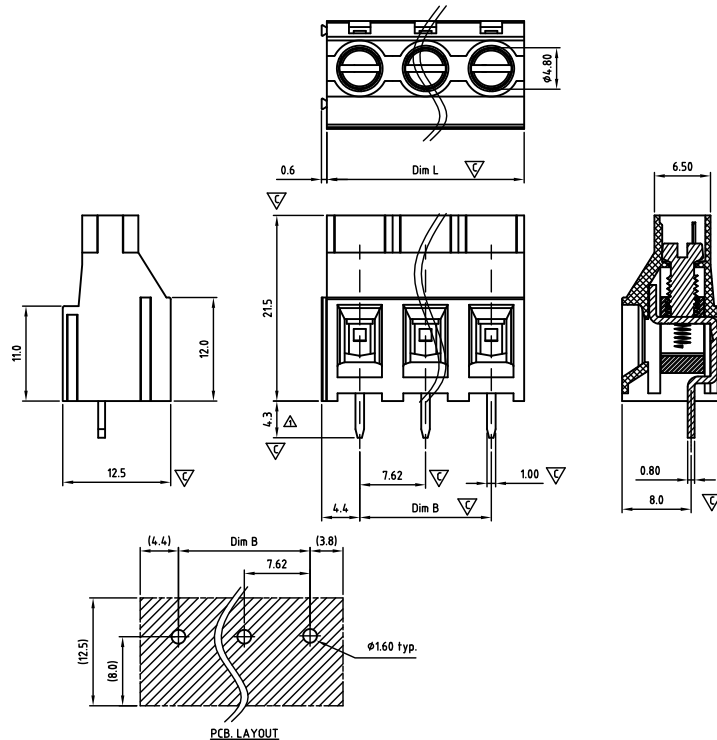




PCB SCREW RISING CLAMP SYSTEM

CAFMMH762-SERIES

cULus E501953



Critical dimension: ∇

Dim.L=Px7.62		
Dim.B=(P-1)x7.62		
P=Number of poles (02-16)		
	Dim B	Dim L
0-30mm	+/- 0,15	+/- 0,20
over 30-60mm	+/- 0,20	+/- 0,25
over 60-90mm	+/- 0,25	+/- 0,30
over 90mm	+/- 0,30	+/- 0,40

Tolerance	
x.	+/- 0,50
x.x	+/- 0,30
x.xx	+/- 0,10
x°	+/- 1°
ϕ	Units:mm

Technical data

Technical data in accordance with UL/CUL

	Use Group	B	C	D
Nominal voltage (V)		300	300	300
Nominal current (A)		30	30	10
Connection capacity(AWG)		30-10	30-10	30-10

Technical data in accordance with IEC

Rated insulation voltage at pollution degree 2 (V)	630		
Rated current/conductor cross-section (A/mm ²)	32 / 4		
Solid/stranded(mm ²)	0.2-4 / 0.2-4		
Surge voltage category/pollution degree	III / 3	III / 2	II / 2
Rated insulation voltage(V)	500	630	1000
Rated surge voltage(kV)	6	6	6

General data

Stripping length(mm)	7-8
Screw thread	M3.5
Tightening torque(Nm)	0.5-0.8
Insulation Withstanding Voltage	AC 1600 / 1min
Insulation Resistance	1000M Ω or more at DC500V
Using temperature range	-40°C-115°C

Materials

Insulation material group	PA 66 I UL94 -V0
Contact	Brass, Tin plated
Cage	Brass, Ni plated
Screw	Steel, Zn plated

Packing information

Poles	Order Number	SPQ
2	CAFMMH76202x000	215
3	CAFMMH76203x000	140
4	CAFMMH76204x000	105
5	CAFMMH76205x000	120
6	CAFMMH76206x000	100
7	CAFMMH76207x000	80
8	CAFMMH76208x000	60
9	CAFMMH76209x000	60
10	CAFMMH76210x000	60
11	CAFMMH76211x000	40
12	CAFMMH76212x000	40
13	CAFMMH76213x000	40
14	CAFMMH76214x000	40
15	CAFMMH76215x000	40
16	CAFMMH76216x000	30

Ordering code

CAFMMH 762 xx x xxx

① ② ③ ④ ⑤ ⑥

- ① Type
- ② Product style
- ③ Pitch
- ④ Poles (02-16)
- ⑤ Color
- ⑥ Standard 000 or Custom XXX

Color

0 Black	5 Green
1 Brown	6 Blue
2 Red	G Pale grey
3 Orange	8 Dark grey
4 Yellow	9 White

Key Commercial data

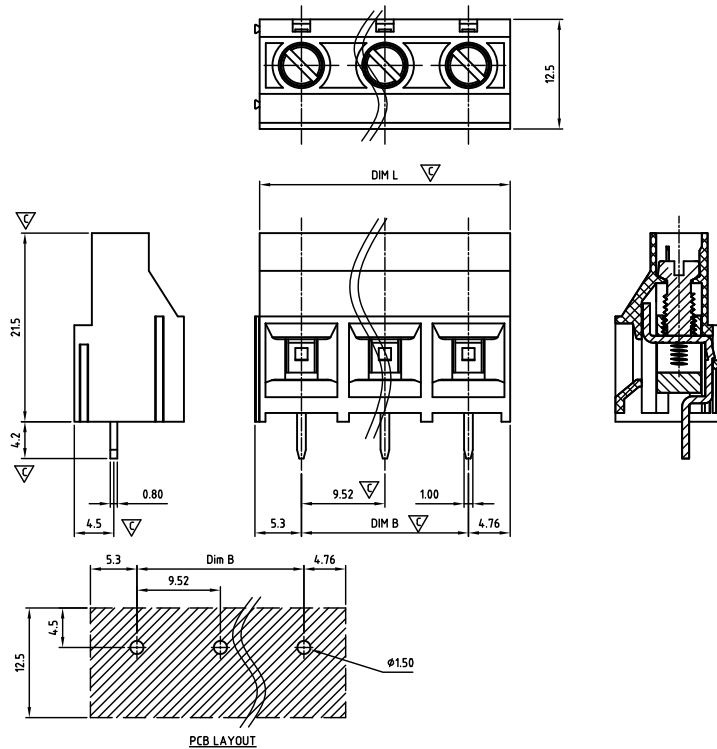
Custom tariff number	8536901100
Country of origin	CN (China)





CAFMMH952-SERIES

cULus E501953



Critical dimension: ▽

Dim.L=Px9.52

Dim.B=(P-1)x9.52

P=Number of poles (02-12)

	Dim B	Dim L
0-30mm	+/- 0,15	+/- 0,20
over 30-60mm	+/- 0,20	+/- 0,25
over 60-90mm	+/- 0,25	+/- 0,30
over 90mm	+/- 0,30	+/- 0,40

Tolerance	
x.	+/- 0,50
x.x	+/- 0,30
x.xx	+/- 0,10
x°	+/- 1°
Units:mm	

Technical data

Technical data in accordance with UL/CUL

	Use Group	B	C	D
Nominal voltage (V)		300	300	300
Nominal current (A)		30	30	10
Connection capacity(AWG)		30-10	30-10	30-10

Technical data in accordance with IEC

Rated insulation voltage at pollution degree 2 (V)	630		
Rated current/conductor cross-section (A/mm ²)	32 / 4		
Solid/stranded(mm ²)	0.2-4 / 0.2-4		
Surge voltage category/pollution degree	III / 3	III / 2	II / 2
Rated insulation voltage(V)	500	630	1000
Rated surge voltage(kV)	6	6	6

General data

Stripping length(mm)	7-8
Screw thread	M3.5
Tightening torque(Nm)	0.5-0.8
Insulation Withstanding Voltage	AC 1600 / 1min
Insulation Resistance	1000MΩ or more at DC500V
Using temperature range	-40°C-115°C

Materials

Insulation material group	PA 66 I UL94 -V0
Contact	Brass, Tin plated
Cage	Brass, Ni plated
Screw	Steel, Zn plated

Packing information

Poles	Order Number	SPQ
2	CAFMMH95202x000	215
3	CAFMMH95203x000	140
4	CAFMMH95204x000	105
5	CAFMMH95205x000	120
6	CAFMMH95206x000	100
7	CAFMMH95207x000	80
8	CAFMMH95208x000	60
9	CAFMMH95209x000	60
10	CAFMMH95210x000	60
11	CAFMMH95211x000	40
12	CAFMMH95212x000	40

Ordering code

CAFMMH 952 xx x xxx

① ② ③ ④ ⑤ ⑥

- ① Type
- ② Product style
- ③ Pitch
- ④ Poles (02-12)
- ⑤ Color
- ⑥ Standard 000 or Custom XXX

Color

0 Black	5 Green
1 Brown	6 Blue
2 Red	G Pale grey
3 Orange	8 Dark grey
4 Yellow	9 White

Key Commercial data

Custom tariff number	8536901100
Country of origin	CN (China)













Mating with headers



TERMINAL BLOCKS

COLOR SIMILAR TO RAL XXX

COLOR

 <p>BLACK Similar to RAL9005</p>	 <p>BROWN Similar to RAL8017</p>	 <p>RED Similar to RAL3001</p>
 <p>ORANGE Similar to RAL2011</p>	 <p>GREEN Similar to RAL6018/K</p>	 <p>LIGHT GREEN Similar to RAL6018/U</p>
 <p>BLUE Similar to RAL5015</p>	 <p>LIGHT GREY Similar to RAL7035</p>	 <p>DARK GREY Similar to RAL7004</p>
 <p>YELLOW Similar to RAL1018</p>	 <p>WHITE Similar to RAL1102</p>	 <p>YELLOW-GREEN Applied to earth terminal</p>

COLORS AND MARKING

We have many sets of high precision injecting machine. All the machines can process a variety of high precision injecting products, in order to meet all kinds of components and customer's needs. Also, our factory is using concentrated dry feeding system and automatic suction machine, so that the machines can supply material automatically. We only need one person to run this production line, which is the best part of

our precision injecting machines. Furthermore, we do make special features in the plastic housing to prevent mismatching, increase creeping distance or prevent PCB parts to have wrong orientation. In addition to this we do special marking and even special color if needed.

Terminal blocks and headers can be marked by different methods. We offer our customers two kinds

of printing: ink-jet printing, the cost-effective, fast and flexible solution to print letters or individual characters. The tampon printing is also available. The Tampon print guarantees the best quality and definition. A variety of letters and characters are possible, even on corners and round surfaces. Both types of printing are wipe-proof; the tampon-printing method is also resistant to isopropyl alcohol.

AUTOMATED ASSEMBLY

According to the different characteristics of products, we have divided our assembly production line into two:

automated assembly line and manual assembly line. Our professional engineers not only have the ability to design the labor power into the automated assembly system, but also are able to develop and improve the automated assembly machines, as well as defective product detecting system.

Hence we can ensure the quality of product also improve the productivity. Recent years, in order to reduce the production costs and improve market competitiveness, CABCON has reduced the cost in manual production and focused

on the development of automation equipment, to ensure product quality and production capacity. Production efficiency will lead the delivery time become more accurate.

INJECTION MOLDING

Right now CABCON has many sets of high precision injecting machine. All the machines are able to process a variety of high precision injecting products, in order to meet all kinds of components and OEM / ODM customer's needs. Also our factory is using concentrated dry feeding system and automatic suction machine, so that the machines can supply material automatically. CABCON only needs one person to run this production line, which is the best part of our precision injecting machines.

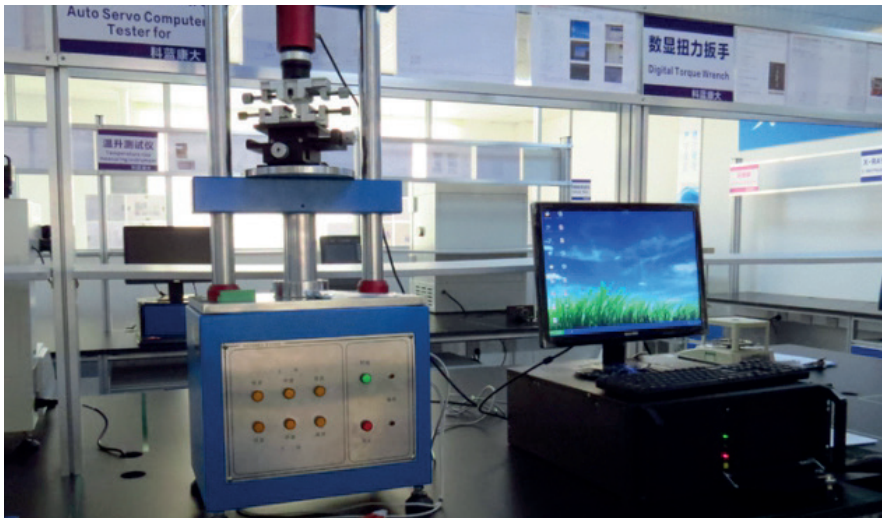
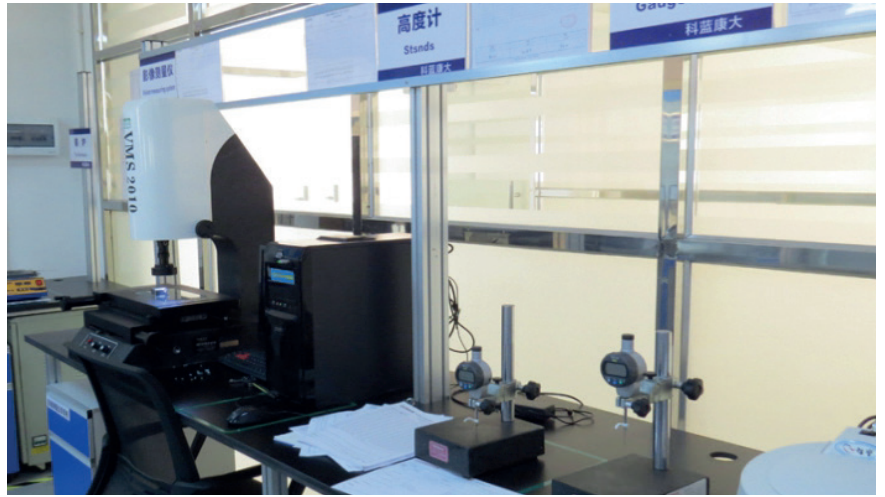
SCREW AND METAL CAGE

CABCON has all kinds of precision lathes, drilling, tapping machines. Also our production line has a number of advanced and efficient CCD automatic detecting systems.



TESTING LABORATORY

ISO/IEC17025 standard is applied in CABCON's laboratory. Our lab has included the testing equipments of electrical, environmental, mechanical and vibration. All equipments are comply with UL1059 UL486E IEC60947 IEC60998 IEC61984 GB13140 to monitor the production process, hence ensure the quality and stability of CABCON's product.



COMPANY ABILITY



CREATING VALUE



Cabcon A/S · Stamholmen 193A · DK-2650 Hvidovre · Denmark · Tel. +45 38 76 03 15 · www.cabcon.dk

Cabcon A/S · Trollåsveien 4 · 1414 Trollåsen · Norway · Tel. +47 93 200 204 · www.cabcon.dk

Cabcon A/S · Stora Ävägen 21 · 436 34 Askim · Sweden · Tel. +46 735 01 33 24 · www.cabcon.dk

Cabcon Asia · Unit 8, 28/F, Cable TV Tower · Hoi Shing Road, Tsuen Wan · Hong Kong