

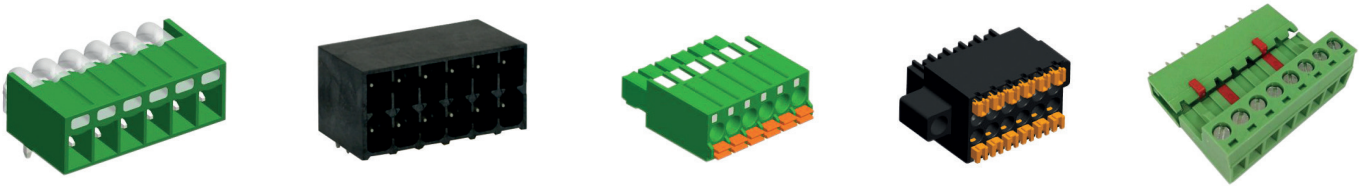
**CREATING VALUE**

**PCB SCREW WIRE PROTECTOR**



CREATING VALUE





## COMPANY PROFILE

Cabcon Contacts is a part of the Cabcon Group, which was founded in Copenhagen, Denmark in 2003. Cabcon Contacts are a professional manufacturer of terminal block with a "state of the art" production site in China. The focus in our ISO9001 approved factory in China is quality, lean production and competitive pricing.

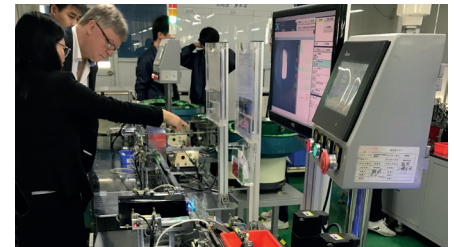
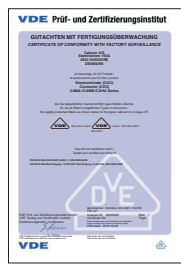
Hard investments have been made in a fully automated production line. Along the production line CCTV systems are installed to monitor and control the production line from the injection, molding, stamping and to the final packing.

To meet the customers demand we offer ink-jet printing and tampon printing and our products can be delivered in trays, boxes and/or Tape on reel.

## PRODUCT RANGE

- // Screw type plugs and headers for pluggable system
- // Screwless type plugs for pluggable system
- // PCB screw rising clamp system
- // PCB screw wire protector system
- // PCB spring-cage system
- // PCB barrier screw system
- // Special type Terminal blocks

According to international requirements, most of our products are and will be designed to meet UL and VDE regulations.



## CABCON GROUP

As experienced experts in electromechanical products and cable assemblies we support our customers and partners around the world with products, solutions and services in the industrial environment. With our motto "Creating Value" we continuously develop innovative, sustainable and useful solutions for our customers individual needs.

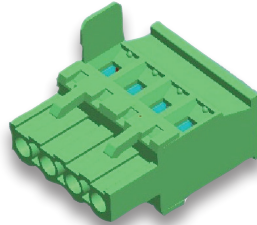
With headquarter in Denmark, divisions in Sweden, Norway and Hong Kong - we meet the customers on site. With our international sales setup, and warehouses in both Europe and Asia we create value with local presence, but global logistics.



## OUR SERVICE

### CUSTOMIZED PRODUCTS

Terminal blocks or headers for special applications can be developed at CABCON to meet the customer's requirements. Modifications of standard housing and integration of an additional wire connection within the plastic housing are possible.



### PRINTING

Terminal blocks and headers can be marked by different methods. CABCON offers its customers two kinds of printing: Ink-jet printing, the cost-effective, fast and flexible solution to print letters or individual characters. The tampon printing is also available. The Tampon print guarantees the best quality and definition. A variety of letters and characters are possible, even on corners and round surfaces. Both types of printing are wipe-proof; the tampon-printing method is also resistant to isopropyl alcohol.



### PACKING

We can pack in Tape-on-reel, Trays, Boxes. For printed circuit board assembly in automated processes. CABCON can offer terminal blocks and headers on tape-on-reel, in trays or in boxes. Dimensions and shapes are adapted to the assembly machine. Base on request the tapes/trays/boxes can be supplied in antistatic packaging for ESD protection. Terminal blocks and headers in tape-on-reel or tray packing will be delivered with pick & place pad where needed.

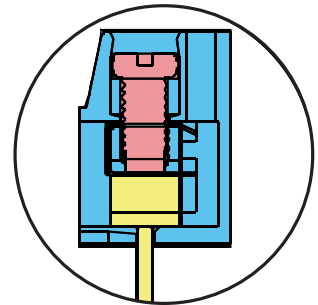


### THE CATALOGUE

We have made documentation easy to read, by using icons and keeping all relevant information's on one page. Approvals is showed in the drawing, and mating parts is mentioned where available, so it is easy to find mating options. We are trying to update the catalogue frequently for you to have latest information's available.

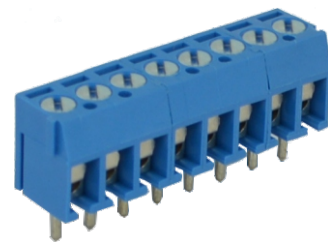


## THIS CATALOGUE CONTAINS PCB SCREW WIRE PROTECTOR



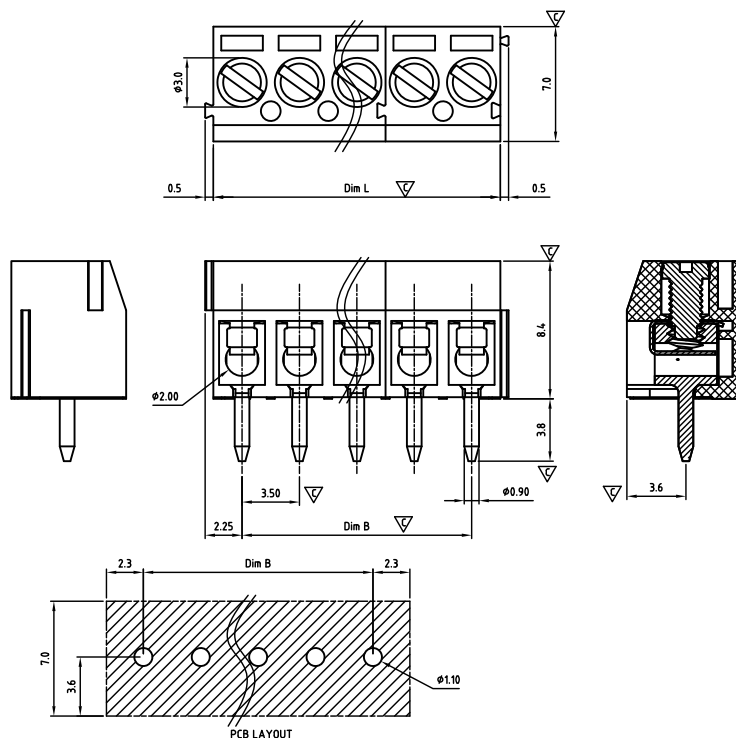
The information in this document is subject to change without further notice.





## CADCHM350-SERIES

**cAUs** E501953



Critical dimension:  $\nabla$

Dim.L=Px3.5

Dim.B=(P-1)x3.5

P=Number of poles (02-24)

	Dim B	Dim L
0-30mm	+/- 0,15	+/- 0,20
over 30-60mm	+/- 0,20	+/- 0,25
over 60-90mm	+/- 0,25	+/- 0,30
over 90mm	+/- 0,30	+/- 0,40

Tolerance	
x.	+/- 0,50
x.x	+/- 0,30
x.xx	+/- 0,10
x°	+/- 1°
Units:mm	

### Technical data

Technical data in accordance with UL/cUL

	Use Group	B	C	D
Nominal voltage (V)	300	-	-	-
Nominal current (A)	10	-	-	-
Connection capacity(AWG)	26-16	-	-	-

Technical data in accordance with IEC and VDE

Rated insulation voltage at pollution degree 2 (V)	200
Rated current/conductor cross-section (A/mm <sup>2</sup> )	10 / 1.5
Solid/stranded(mm <sup>2</sup> )	0.14-1.5 / 0.14-1.5
Surge voltage category/pollution degree	III / 3 III / 2 II / 2
Rated insulation voltage(V)	160 200 400
Rated surge voltage(kV)	2.5 2.5 2.5

### General data

Stripping length(mm)	5-6
Screw thread	M2.0
Tightening torque(Nm)	0.20-0.22
Insulation Withstanding Voltage	AC 1600 / 1min
Insulation Resistance	1000M $\Omega$ or more at DC500V
Using temperature range	-40°C-115°C

### Materials

Insulation material group	PA 66 I UL94 -V0
Wire guard	Stainless steel
Cage	Brass, Sn plated
Screw	Steel, Zn plated

### Packing information

Poles	Order Number	SPQ
2	CADCHM35002x000	1340
3	CADCHM35003x000	980
4	CADCHM35004x000	800
5	CADCHM35005x000	600
6	CADCHM35006x000	490
7	CADCHM35007x000	360
8	CADCHM35008x000	300
9	CADCHM35009x000	240
10	CADCHM35010x000	220
11	CADCHM35011x000	165
12	CADCHM35012x000	165
13	CADCHM35013x000	165
14	CADCHM35014x000	165
15	CADCHM35015x000	165
16	CADCHM35016x000	165
17	CADCHM35017x000	165
18	CADCHM35018x000	165
19	CADCHM35019x000	165
20	CADCHM35020x000	150
21	CADCHM35021x000	150
22	CADCHM35022x000	130
23	CADCHM35023x000	130
24	CADCHM35024x000	130

### Ordering code

**CADC HM 350 xx x xxx**  
① ② ③ ④ ⑤ ⑥

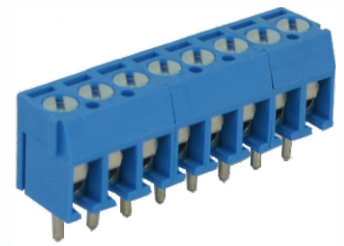
- ① Type
- ② Product style
- ③ Pitch
- ④ Poles (02-24)
- ⑤ Color
- ⑥ Standard 000 or Custom XXX

Color

0 Black	5 Green
1 Brown	6 Blue
2 Red	G Pale grey
3 Orange	8 Dark grey
4 Yellow	9 White

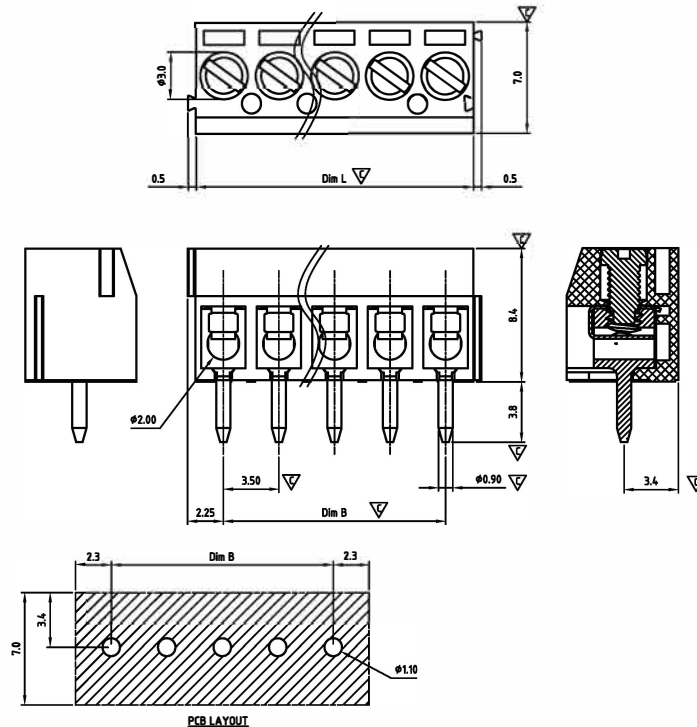
### Key Commercial data

Custom tariff number	8536901100
Country of origin	CN (China)



## CADCHS350-SERIES (solid block)

**cAUs** E501953



Critical dimension:  $\nabla$

Dim.L=Px3.5

Dim.B=(P-1)x3.5

P=Number of poles (02-24)

	Dim B	Dim L
0-30mm	+/- 0,15	+/- 0,20
over 30-60mm	+/- 0,20	+/- 0,25
over 60-90mm	+/- 0,25	+/- 0,30
over 90mm	+/- 0,30	+/- 0,40

Tolerance	
x.	+/- 0,50
x.x	+/- 0,30
x.xx	+/- 0,10
x°	+/- 1°
Units:mm	

### Technical data

#### Technical data in accordance with UL/cUL

	Use Group	B	C	D
Nominal voltage (V)	300	-	-	-
Nominal current (A)	10	-	-	-
Connection capacity(AWG)	26-16	-	-	-

#### Technical data in accordance with IEC and VDE

Rated insulation voltage at pollution degree 2 (V)	200		
Rated current/conductor cross-section (A/mm²)	10 / 1.5		
Solid/stranded(mm²)	0.14-1.5 / 0.14-1.5		
Surge voltage category / pollution degree	III / 3	III / 2	II / 2
Rated insulation voltage(V)	160	200	400
Rated surge voltage(kV)	2.5	2.5	2.5

#### General data

Stripping length(mm)	5-6
Screw thread	M2.0
Tightening torque(Nm)	0.20-0.22
Insulation Withstanding Voltage	AC 1600 / 1min
Insulation Resistance	1000MΩ or more at DC500V
Using temperature range	-40°C-115°C

#### Materials

Insulation material group	PA 66 I UL94 -V0
Wire guard	Stainless steel
Cage	Brass, Sn plated
Screw	Steel, Zn plated

### Packing information

Poles	Order Number	SPQ
2	CADCHS35002x000	1340
3	CADCHS35003x000	980
4	CADCHS35004x000	800
5	CADCHS35005x000	600
6	CADCHS35006x000	490
7	CADCHS35007x000	360
8	CADCHS35008x000	300
9	CADCHS35009x000	240
10	CADCHS35010x000	220
11	CADCHS35011x000	165
12	CADCHS35012x000	165
13	CADCHS35013x000	165
14	CADCHS35014x000	165
15	CADCHS35015x000	165
16	CADCHS35016x000	165
17	CADCHS35017x000	165
18	CADCHS35018x000	165
19	CADCHS35019x000	165
20	CADCHS35020x000	150
21	CADCHS35021x000	150
22	CADCHS35022x000	130
23	CADCHS35023x000	130
24	CADCHS35024x000	130

### Ordering code

**CADC HS 350 xx x xxx**

① ② ③ ④ ⑤ ⑥

- ① Type
- ② Product style
- ③ Pitch
- ④ Poles (02-24)
- ⑤ Color
- ⑥ Standard 000 or Custom XXX

Color	
0 Black	5 Green
1 Brown	6 Blue
2 Red	G Pale grey
3 Orange	8 Dark grey
4 Yellow	9 White

### Key Commercial data

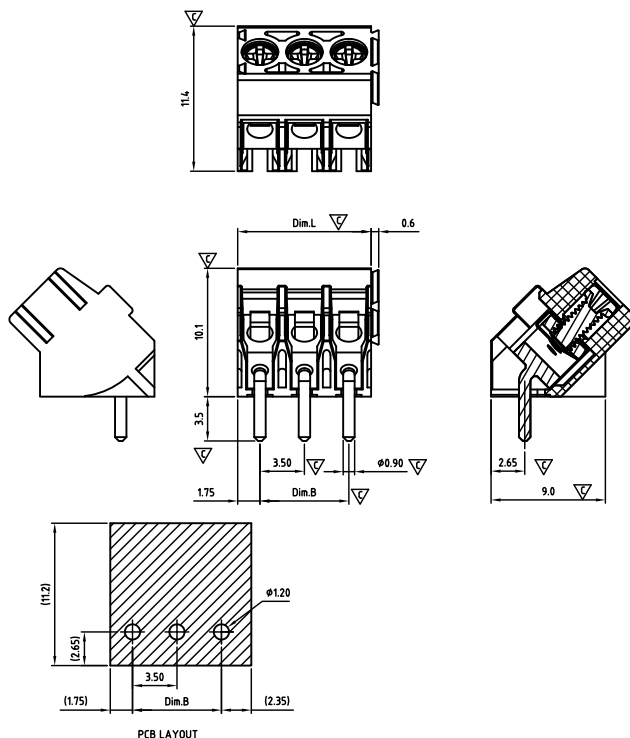
Custom tariff number	8536901100
Country of origin	CN (China)





## CADJAS350-SERIES

cAlus E501953



Critical dimension: ▽

Dim.L=Px3.5

Dim.B=(P-1)x3.5

P=Number of poles (02-24)

	Dim B	Dim L
0-30mm	+/- 0,15	+/- 0,20
over 30-60mm	+/- 0,20	+/- 0,25
over 60-90mm	+/- 0,25	+/- 0,30
over 90mm	+/- 0,30	+/- 0,40

PCB LAYOUT

Tolerance	
x.	+/- 0,50
x.x	+/- 0,30
x.xx	+/- 0,10
x°	+/- 1°

Units:mm

### Technical data

Technical data in accordance with UL/CUL

	Use Group	B	C	D
Nominal voltage (V)	300	-	300	
Nominal current (A)	10	-	10	
Connection capacity(AWG)	26-16	-	26-16	

Technical data in accordance with IEC and VDE

Rated insulation voltage at pollution degree 2 (V)	200		
Rated current/conductor cross-section (A/mm <sup>2</sup> )	17,5 / 1.5		
Solid/stranded(mm <sup>2</sup> )	0.14-1.5 / 0.14-1.5		
Surge voltage category/pollution degree	III / 3	III / 2	II / 2
Rated insulation voltage(V)	160	200	400
Rated surge voltage(kV)	2.5	2.5	2.5

### General data

Stripping length(mm)	5-6
Screw thread	M2.0
Tightening torque(Nm)	0.20-0.22
Insulation Withstanding Voltage	AC 1600 / 1min
Insulation Resistance	1000MΩ or more at DC500V
Using temperature range	-40°C-115°C

### Materials

Insulation material group	PA 66 I UL94 -V0
Wire guard	Stainless steel
Cage	Brass, Sn plated
Screw	Steel, Zn plated

### Packing information

Poles	Order Number	SPQ
2	CADJAS35002x000	1300
3	CADJAS35003x000	900
4	CADJAS35004x000	650
5	CADJAS35005x000	550
6	CADJAS35006x000	450
7	CADJAS35007x000	400
8	CADJAS35008x000	350
9	CADJAS35009x000	300
10	CADJAS35010x000	250
11	CADJAS35011x000	250
12	CADJAS35012x000	200
13	CADJAS35013x000	200
14	CADJAS35014x000	150
15	CADJAS35015x000	150
16	CADJAS35016x000	150
17	CADJAS35017x000	150
18	CADJAS35018x000	150
19	CADJAS35019x000	100
20	CADJAS35020x000	100
21	CADJAS35021x000	100
22	CADJAS35022x000	100
23	CADJAS35023x000	100
24	CADJAS35024x000	100

### Ordering code

**CADJ AS 350 xx x xxx**

① ② ③ ④ ⑤ ⑥

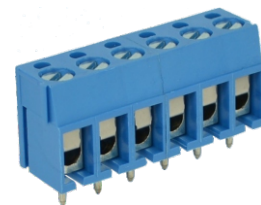
- ① Type
- ② Product style
- ③ Pitch
- ④ Poles (02-24)
- ⑤ Color
- ⑥ Standard 000 or Custom XXX

Color

0 Black	5 Green
1 Brown	6 Blue
2 Red	G Pale grey
3 Orange	8 Dark grey
4 Yellow	9 White

### Key Commercial data

Custom tariff number	8536901100
Country of origin	CN (China)

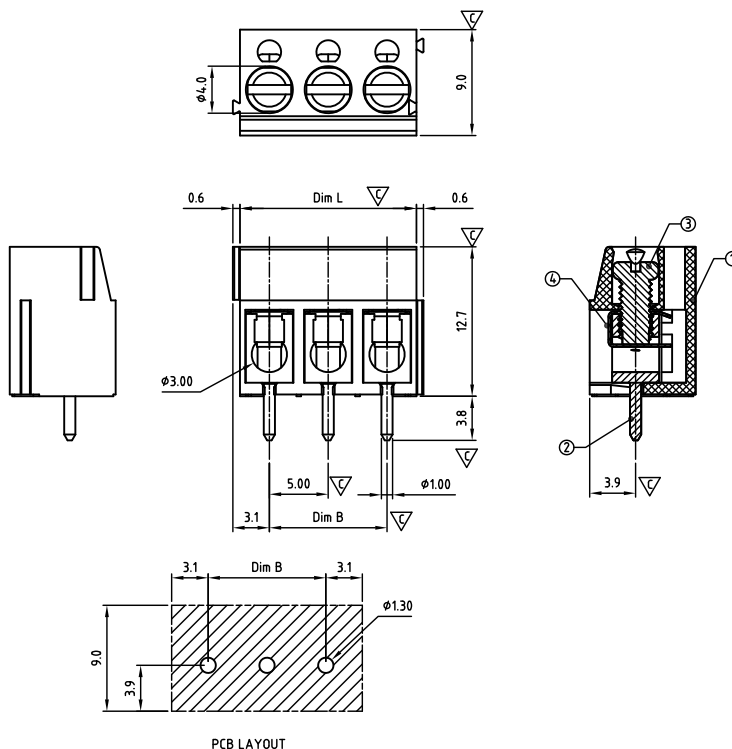


# PCB Screw Wire protector System terminal blocks

## CADAHM500-SERIES

Pitch 5,00mm

cAUs E501953



Critical dimension:  $\nabla$

Dim.L=Px5.0

Dim.B=(P-1)x5.0

P=Number of poles (02-24)

	Dim B	Dim L
0-30mm	+/- 0,15	+/- 0,20
over 30-60mm	+/- 0,20	+/- 0,25
over 60-90mm	+/- 0,25	+/- 0,30
over 90mm	+/- 0,30	+/- 0,40

Tolerance	
x.	+/- 0,50
x.x	+/- 0,30
x.xx	+/- 0,10
x°	+/- 1°
Units:mm	

### Technical data

Technical data in accordance with UL/cUL

	Use Group	B	C	D
Nominal voltage (V)	300	-	300	
Nominal current (A)	16	-	10	
Connection capacity(AWG)	26-14	-	26-14	

Technical data in accordance with IEC and VDE

Rated insulation voltage at pollution degree 2 (V)	250
Rated current/conductor cross-section (A/mm <sup>2</sup> )	17.5 / 1.5
Solid/stranded(mm <sup>2</sup> )	0.5-2.5 / 0.5-2.5
Surge voltage category/pollution degree	III / 3 III / 2 II / 2
Rated insulation voltage(V)	250 320 630
Rated surge voltage(kV)	4 4 4

### General data

Stripping length(mm)	6-7
Screw thread	M3.0
Tightening torque(Nm)	0.4
Insulation Withstanding Voltage	Ac1600 / 1min
Indulation Resistance	1000MΩ or more at DC500V
Using temperature range	-40°C-115°C

### Materials

Insulation material group	PA 66 I UL94 -V0
Contact	PhBz, Tin plated
Cage	Brass, Ni plated
Screw	Steel, Zn plated

### Packing information

Poles	Order Number	SPQ
2	CADAHM50002x000	650
3	CADAHM50003x000	400
4	CADAHM50004x000	300
5	CADAHM50005x000	250
6	CADAHM50006x000	250
7	CADAHM50007x000	240
8	CADAHM50008x000	150
9	CADAHM50009x000	150
10	CADAHM50010x000	110
11	CADAHM50011x000	100
12	CADAHM50012x000	100
13	CADAHM50013x000	90
14	CADAHM50014x000	90
15	CADAHM50015x000	80
16	CADAHM50016x000	80
17	CADAHM50017x000	80
18	CADAHM50018x000	80
19	CADAHM50019x000	70
20	CADAHM50020x000	65
21	CADAHM50021x000	60
22	CADAHM50022x000	60
23	CADAHM50023x000	60
24	CADAHM50024x000	60

### Ordering code

CADA HM 500 xx x xxx  
① ② ③ ④ ⑤ ⑥

- ① Type
- ② Product style
- ③ Pitch
- ④ Poles (02-24)
- ⑤ Color
- ⑥ Standard 000 or Custom XXX

Color

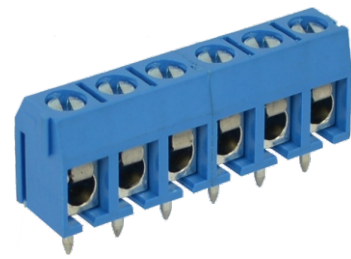
0 Black	5 Green
1 Brown	6 Blue
2 Red	G Pale grey
3 Orange	8 Dark grey
4 Yellow	9 White

### Key Commercial data

Custom tariff number	8536901100
Country of origin	CN (China)

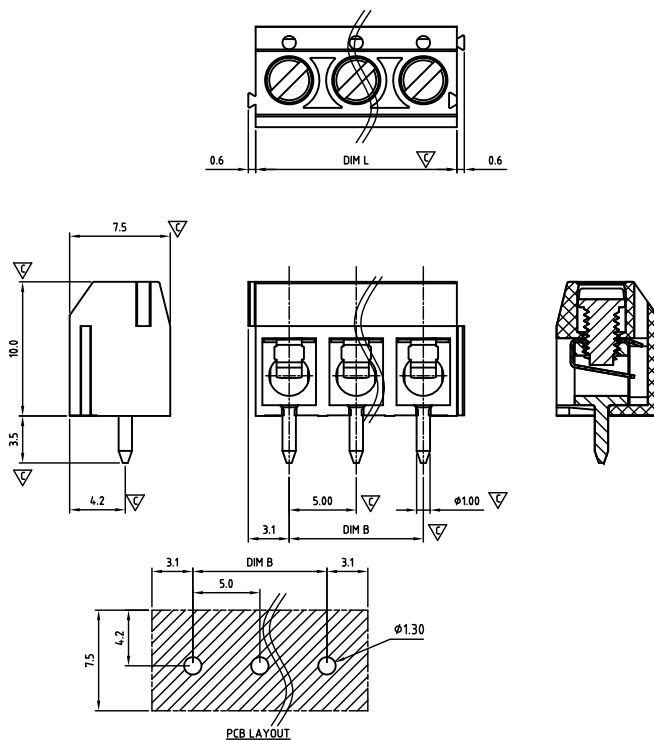
### Mating with headers





## CADBHM500-SERIES

**cAlus** E501953



Critical dimension: 

Dim.L=Px5.0

Dim.B=(P-1)x5.0

P=Number of poles (02-24)

	Dim B	Dim L
0-30mm	+/- 0,15	+/- 0,20
over 30-60mm	+/- 0,20	+/- 0,25
over 60-90mm	+/- 0,25	+/- 0,30
over 90mm	+/- 0,30	+/- 0,40

Tolerance	
x.	+/- 0,50
x.x	+/- 0,30
x.xx	+/- 0,10
x°	+/- 1°
Units:mm	

### Technical data

Technical data in accordance with UL/CUL

	Use Group	B	C	D
Nominal voltage (V)	300	-	300	
Nominal current (A)	15	-	10	
Connection capacity(AWG)	26-14	-	26-14	

Technical data in accordance with IEC and VDE

Rated insulation voltage at pollution degree 2 (V)	250		
Rated current/conductor cross-section (A/mm²)	17.5 / 1.5		
Solid/stranded(mm²)	0.5-2.5 / 0.5-2.5		
Surge voltage category/pollution degree	III / 3	III / 2	II / 2
Rated insulation voltage(V)	250	320	630
Rated surge voltage(kV)	4	4	4

### General data

Stripping length(mm)	5-6
Screw thread	M2.6
Tightening torque(Nm)	0.4
Insulation Withstanding Voltage	AC 1600 / 1min
Insulation Resistance	1000MΩ or more at DC500V
Using temperature range	-40°C-115°C

### Materials

Insulation material group	PA 66 I UL94 -V0
Wire guard	Stainless steel
Cage	Brass, Sn plated
Screw	Steel, Zn plated

### Packing information

Poles	Order Number	SPQ
2	CADBHM50002x000	900
3	CADBHM50003x000	600
4	CADBHM50004x000	450
5	CADBHM50005x000	360
6	CADBHM50006x000	300
7	CADBHM50007x000	240
8	CADBHM50008x000	240
9	CADBHM50009x000	185
10	CADBHM50010x000	165
11	CADBHM50011x000	160
12	CADBHM50012x000	150
13	CADBHM50013x000	150
14	CADBHM50014x000	150
15	CADBHM50015x000	140
16	CADBHM50016x000	140
17	CADBHM50017x000	140
18	CADBHM50018x000	95
19	CADBHM50019x000	90
20	CADBHM50020x000	90
21	CADBHM50021x000	80
22	CADBHM50022x000	75
23	CADBHM50023x000	75
24	CADBHM50024x000	75

### Ordering code

**CADB HM 500 xx x xxx**  
① ② ③ ④ ⑤ ⑥

- ① Type
- ② Product style
- ③ Pitch
- ④ Poles (02-24)
- ⑤ Color
- ⑥ Standard 000 or Custom XXX

Color

0 Black	5 Green
1 Brown	6 Blue
2 Red	G Pale grey
3 Orange	8 Dark grey
4 Yellow	9 White

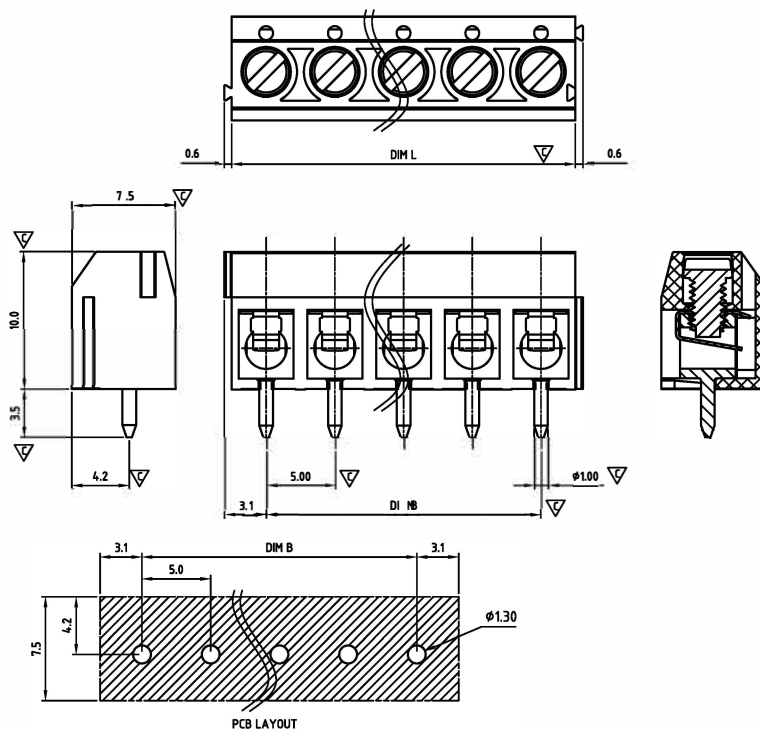
### Key Commercial data

Custom tariff number	8536901100
Country of origin	CN (China)



## CADBHS500-SERIES (solid block)

cULus E501953



Critical dimension: ▽

Dim.L=Px5.0

Dim.B=(P-1)x5.0

P=Number of poles (02-24)

	Dim B	Dim L
0-30mm	+/- 0,15	+/- 0,20
over 30-60mm	+/- 0,20	+/- 0,25
over 60-90mm	+/- 0,25	+/- 0,30
over 90mm	+/- 0,30	+/- 0,40

Tolerance	
x.	+/- 0,50
x.x	+/- 0,30
x.xx	+/- 0,10
x°	+/- 1°
Units:mm	

### Technical data

#### Technical data in accordance with UL/cUL

	Use Group	B	C	D
Nominal voltage (V)	300	-	300	
Nominal current (A)	15	-	10	
Connection capacity(AWG)	26-14	-	26-14	

#### Technical data in accordance with IEC and VDE

Rated insulation voltage at pollution degree 2 (V)	250		
Rated current/conductor cross-section (A/mm²)	17.5 / 1.5		
Solid/stranded(mm²)	0.5-2.5 / 0.5-2.5		
Surge voltage category/pollution degree	III / 3	III / 2	II / 2
Rated insulation voltage(V)	250	320	630
Rated surge voltage(kV)	4	4	4

#### General data

Stripping length(mm)	5-6
Screw thread	M2.6
Tightening torque(Nm)	0.4
Insulation Withstanding Voltage	AC 1600 / 1min
Insulation Resistance	1000MΩ or more at DC500V
Using temperature range	-40°C-115°C

#### Materials

Insulation material group	PA 66 I UL94 -V0
Wire guard	Stainless steel
Cage	Brass, Sn plated
Screw	Steel, Zn plated

### Packing information

Poles	Order Number	SPQ
2	CADBHS50002x000	900
3	CADBHS50003x000	600
4	CADBHS50004x000	450
5	CADBHS50005x000	360
6	CADBHS50006x000	300
7	CADBHS50007x000	240
8	CADBHS50008x000	240
9	CADBHS50009x000	185
10	CADBHS50010x000	165
11	CADBHS50011x000	160
12	CADBHS50012x000	150
13	CADBHS50013x000	150
14	CADBHS50014x000	150
15	CADBHS50015x000	140
16	CADBHS50016x000	140
17	CADBHS50017x000	140
18	CADBHS50018x000	95
19	CADBHS50019x000	90
20	CADBHS50020x000	90
21	CADBHS50021x000	80
22	CADBHS50022x000	75
23	CADBHS50023x000	75
24	CADBHS50024x000	75

### Ordering code

**CADB HS 500 xx x xxx**

① ② ③ ④ ⑤ ⑥

- ① Type
- ② Product style
- ③ Pitch
- ④ Poles (02-24)
- ⑤ Color
- ⑥ Standard 000 or Custom XXX

Color

0 Black	5 Green
1 Brown	6 Blue
2 Red	G Pale grey
3 Orange	8 Dark grey
4 Yellow	9 White

### Key Commercial data

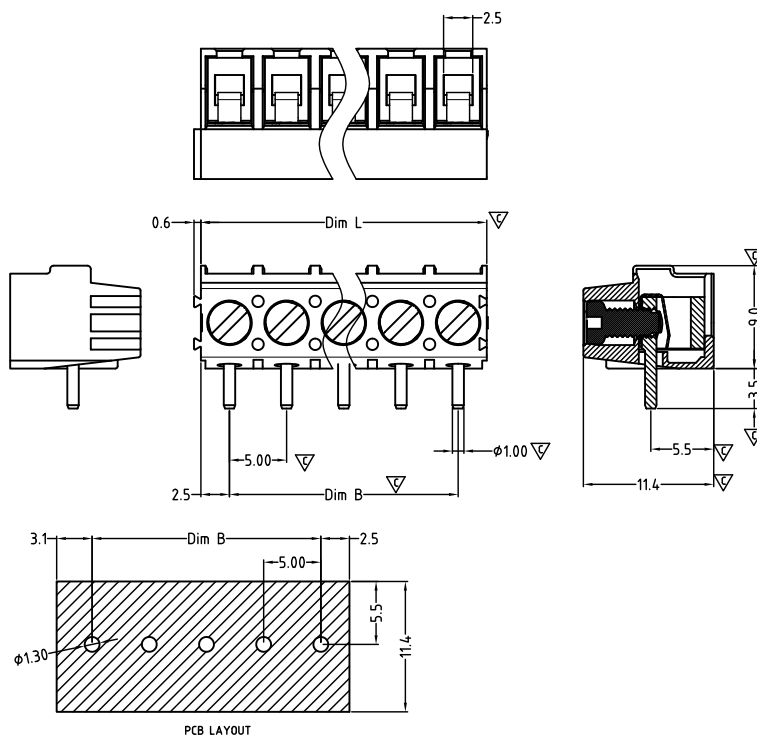
Custom tariff number	8536901100
Country of origin	CN (China)





## CADJHM500-90D SERIES

**cAUs** E501953



Critical dimension:  $\nabla$

Dim.L=Px5.0

Dim.B=(P-1)x5.0

P=Number of poles (02-24)

	Dim B	Dim L
0-30mm	+/- 0,15	+/- 0,20
over 30-60mm	+/- 0,20	+/- 0,25
over 60-90mm	+/- 0,25	+/- 0,30
over 90mm	+/- 0,30	+/- 0,40

Tolerance	
x.	+/- 0,50
x.x	+/- 0,30
x.xx	+/- 0,10
x°	+/- 1°
Units:mm	

### Technical data

Technical data in accordance with UL/CUL

	Use Group	B	C	D
Nominal voltage (V)	300	-	-	-
Nominal current (A)	15	-	-	-
Connection capacity (AWG)	24-12	-	-	-

Technical data in accordance with IEC and VDE

Rated insulation voltage at pollution degree 2 (V)	320
Rated current/conductor cross-section (A/mm²)	17.5 / 2.5
Solid/stranded (mm²)	0.2-2.5 / 0.2-2.5
Surge voltage category/pollution degree	III / 3 III / 2 II / 2
Rated insulation voltage (V)	250 320 630
Rated surge voltage (kV)	4 4 4

### General data

Stripping length (mm)	5-6
Screw thread	M2.6
Tightening torque (Nm)	0.4
Insulation Withstanding Voltage	AC 1600 / 1min
Insulation Resistance	1000MΩ or more at DC500V
Using temperature range	-40°C-115°C

### Materials

Insulation material group	PA 66 I UL94 -V0
Wire guard	Stainless steel
Cage	Brass, Sn plated
Screw	Steel, Zn plated

### Packing information

Poles	Order Number	SPQ
2	CADJHM50002xV00	600
3	CADJHM50003xV00	400
4	CADJHM50004xV00	300
5	CADJHM50005xV00	280
6	CADJHM50006xV00	240
7	CADJHM50007xV00	200
8	CADJHM50008xV00	160
9	CADJHM50009xV00	160
10	CADJHM50010xV00	120
11	CADJHM50011xV00	120
12	CADJHM50012xV00	120
13	CADJHM50013xV00	120
14	CADJHM50014xV00	80
15	CADJHM50015xV00	80
16	CADJHM50016xV00	80
17	CADJHM50017xV00	80
18	CADJHM50018xV00	80
19	CADJHM50019xV00	80
20	CADJHM50020xV00	80
21	CADJHM50021xV00	40
22	CADJHM50022xV00	40
23	CADJHM50023xV00	40
24	CADJHM50024xV00	40

### Ordering code

**CADJ HM 500 xx x Vxx**

① ② ③ ④ ⑤ ⑥

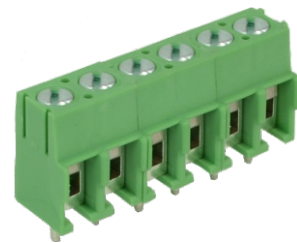
- ① Type
- ② Product style
- ③ Pitch
- ④ Poles (02-24)
- ⑤ Color
- ⑥ Standard V00 or Custom XXX

Color

0 Black	5 Green
1 Brown	6 Blue
2 Red	G Pale grey
3 Orange	8 Dark grey
4 Yellow	9 White

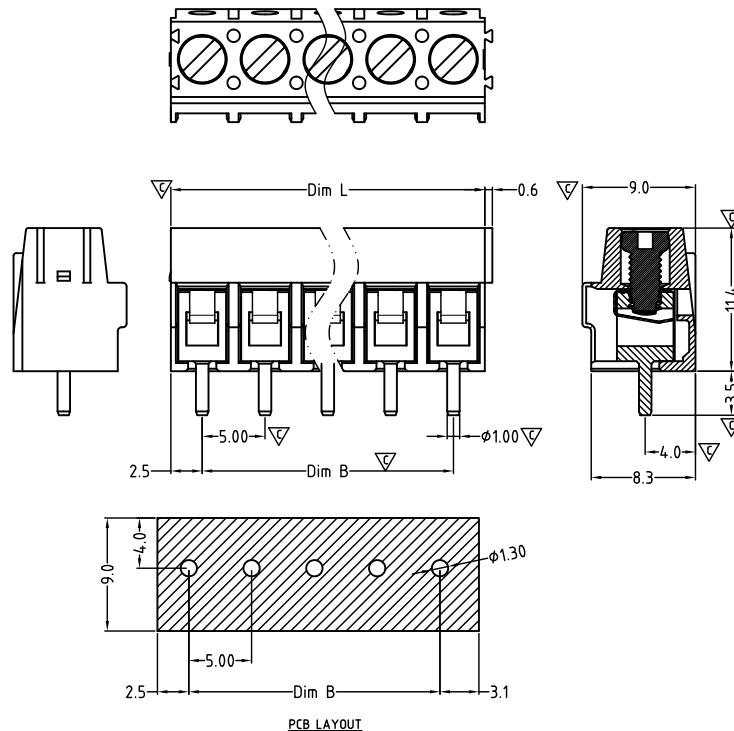
### Key Commercial data

Custom tariff number	8536901100
Country of origin	CN (China)



## CADJHM500-180D SERIES

cAUs E501953



Critical dimension: ▽

Dim.L=Px5.0

Dim.B=(P-1)x5.0

P=Number of poles (02-24)

	Dim B	Dim L
0-30mm	+/- 0,15	+/- 0,20
over 30-60mm	+/- 0,20	+/- 0,25
over 60-90mm	+/- 0,25	+/- 0,30
over 90mm	+/- 0,30	+/- 0,40

Tolerance	
x.	+/- 0,50
x.x	+/- 0,30
x.xx	+/- 0,10
x°	+/- 1°
Units:mm	

### Technical data

Technical data in accordance with UL/CUL

	Use Group	B	C	D
Nominal voltage (V)	300	-	-	-
Nominal current (A)	15	-	-	-
Connection capacity (AWG)	24-12	-	-	-

Technical data in accordance with IEC and VDE

Rated insulation voltage at pollution degree 2 (V)	320
Rated current/conductor cross-section (A/mm²)	17.5 / 2.5
Solid/stranded (mm²)	0.2-2.5 / 0.2-2.5
Surge voltage category/pollution degree	III / 3 III / 2 II / 2
Rated insulation voltage (V)	250 320 630
Rated surge voltage (kV)	4 4 4

### General data

Stripping length (mm)	5-6
Screw thread	M2.6
Tightening torque (Nm)	0.4
Insulation Withstanding Voltage	AC 1600 / 1min
Insulation Resistance	1000MΩ or more at DC500V
Using temperature range	-40°C-115°C

### Materials

Insulation material group	PA 66 I UL94 -V0
Wire guard	Stainless steel
Cage	Brass, Sn plated
Screw	Steel, Zn plated

### Packing information

Poles	Order Number	SPQ
2	CADJHM50002x000	600
3	CADJHM50003x000	400
4	CADJHM50004x000	300
5	CADJHM50005x000	280
6	CADJHM50006x000	240
7	CADJHM50007x000	200
8	CADJHM50008x000	160
9	CADJHM50009x000	160
10	CADJHM50010x000	120
11	CADJHM50011x000	120
12	CADJHM50012x000	120
13	CADJHM50013x000	120
14	CADJHM50014x000	80
15	CADJHM50015x000	80
16	CADJHM50016x000	80
17	CADJHM50017x000	80
18	CADJHM50018x000	80
19	CADJHM50019x000	80
20	CADJHM50020x000	80
21	CADJHM50021x000	40
22	CADJHM50022x000	40
23	CADJHM50023x000	40
24	CADJHM50024x000	40

### Ordering code

CADJ HM 500 xx x xxx

① ② ③ ④ ⑤ ⑥

- ① Type
- ② Product style
- ③ Pitch
- ④ Poles (02-24)
- ⑤ Color
- ⑥ Standard 000 or Custom XXX

Color

0 Black	5 Green
1 Brown	6 Blue
2 Red	G Pale grey
3 Orange	8 Dark grey
4 Yellow	9 White

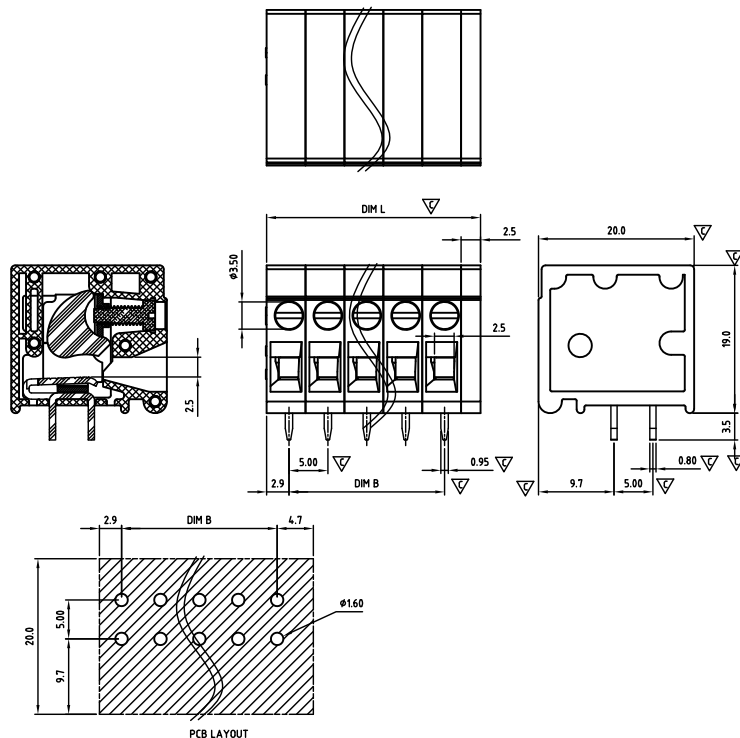
### Key Commercial data

Custom tariff number	8536901100
Country of origin	CN (China)



## CADNHA500 SERIES

**cAlus** E501953



Critical dimension: ▽

Dim.L=Px5.0

Dim.B=(P-1)x5.0

P=Number of poles (02-24)

	Dim B	Dim L
0-30mm	+/- 0,15	+/- 0,20
over 30-60mm	+/- 0,20	+/- 0,25
over 60-90mm	+/- 0,25	+/- 0,30
over 90mm	+/- 0,30	+/- 0,40

Tolerance	
x.	+/- 0,50
x.x	+/- 0,30
x.xx	+/- 0,10
x°	+/- 1°
Units:mm	

### Technical data

Technical data in accordance with UL/CUL

	Use Group	B	C	D
Nominal voltage (V)	300	-	300	
Nominal current (A)	20	-	20	
Connection capacity (AWG)	22-12	-	22-12	

Technical data in accordance with IEC and VDE

Rated insulation voltage at pollution degree 2 (V)	320
Rated current/conductor cross-section (A/mm²)	24 / 2.5
Solid/stranded (mm²)	0.5-2.5 / 0.5-2.5
Surge voltage category/pollution degree	III / 3 III / 2 II / 2
Rated insulation voltage (V)	250 320 630
Rated surge voltage (kV)	4 4 4

### General data

Stripping length (mm)	10-11
Screw thread	M2.5
Tightening torque (Nm)	0.4-0.5
Insulation Withstanding Voltage	AC 1600 / 1min
Insulation Resistance	1000MΩ or more at DC500V
Using temperature range	-40°C-115°C

### Materials

Insulation material group	PA 66 I UL94 -V0
Contact	Brass, Sn plated
Cage	Steel, Zn plated
Screw	Steel, Zn plated

### Packing information

Poles	Order Number	SPQ
2	CADNHA50002x000	420
3	CADNHA50003x000	270
4	CADNHA50004x000	270
5	CADNHA50005x000	175
6	CADNHA50006x000	150
7	CADNHA50007x000	120
8	CADNHA50008x000	100
9	CADNHA50009x000	100
10	CADNHA50010x000	75
11	CADNHA50011x000	75
12	CADNHA50012x000	75
13	CADNHA50013x000	50
14	CADNHA50014x000	50
15	CADNHA50015x000	50
16	CADNHA50016x000	50
17	CADNHA50017x000	50
18	CADNHA50018x000	50
19	CADNHA50019x000	50
20	CADNHA50020x000	50
21	CADNHA50021x000	25
22	CADNHA50022x000	25
23	CADNHA50023x000	25
24	CADNHA50024x000	25

### Ordering code

**CADN HA 500 xx x xxx**

① ② ③ ④ ⑤ ⑥

- ① Type
- ② Product style
- ③ Pitch
- ④ Poles (02-24)
- ⑤ Color
- ⑥ Standard 000 or Custom XXX

Color

0 Black	5 Green
1 Brown	6 Blue
2 Red	G Pale grey
3 Orange	8 Dark grey
4 Yellow	9 White

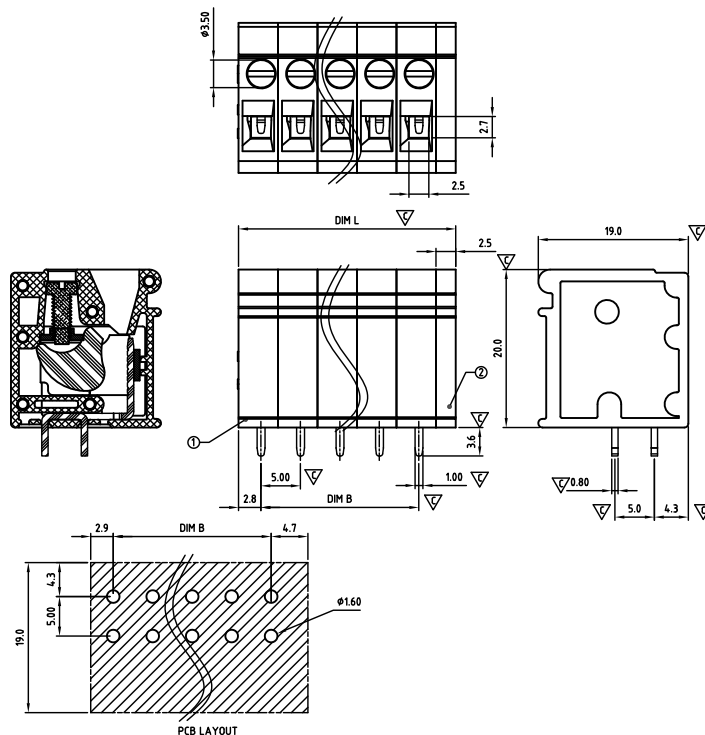
### Key Commercial data

Custom tariff number	8536901100
Country of origin	CN (China)



## CADNVA500 SERIES

cAlus E501953



Critical dimension: ▽

Dim.L=Px5.0

Dim.B=(P-1)x5.0

P=Number of poles (02-24)

	Dim B	Dim L
0-30mm	+/- 0,15	+/- 0,20
over 30-60mm	+/- 0,20	+/- 0,25
over 60-90mm	+/- 0,25	+/- 0,30
over 90mm	+/- 0,30	+/- 0,40

Tolerance	
x.	+/- 0,50
x.x	+/- 0,30
x.xx	+/- 0,10
x°	+/- 1°
Units:mm	

### Technical data

Technical data in accordance with UL/CUL

	Use Group	B	C	D
Nominal voltage (V)	300	-	-	300
Nominal current (A)	20	-	-	20
Connection capacity(AWG)	22-12	-	-	22-12

Technical data in accordance with IEC and VDE

Rated insulation voltage at pollution degree 2 (V)	320
Rated current/conductor cross-section (A/mm²)	24 / 2.5
Solid/stranded(mm²)	0.5-2.5 / 0.5-2.5
Surge voltage category/pollution degree	III / 3 III / 2 II / 2
Rated insulation voltage(V)	250 320 630
Rated surge voltage(kV)	4 4 4

### General data

Stripping length(mm)	10-11
Screw thread	M2.5
Tightening torque(Nm)	0.4-0.5
Insulation Withstanding Voltage	AC 1600 / 1min
Insulation Resistance	1000MΩ or more at DC500V
Using temperature range	-40°C-115°C

### Materials

Insulation material group	PA 66 I UL94 -V0
Contact	Brass, Sn plated
Cage	Steel, Zn plated
Screw	Steel, Zn plated

### Packing information

Poles	Order Number	SPQ
2	CADNVA50002x000	420
3	CADNVA50003x000	270
4	CADNVA50004x000	270
5	CADNVA50005x000	175
6	CADNVA50006x000	150
7	CADNVA50007x000	120
8	CADNVA50008x000	100
9	CADNVA50009x000	100
10	CADNVA50010x000	75
11	CADNVA50011x000	75
12	CADNVA50012x000	75
13	CADNVA50013x000	50
14	CADNVA50014x000	50
15	CADNVA50015x000	50
16	CADNVA50016x000	50
17	CADNVA50017x000	50
18	CADNVA50018x000	50
19	CADNVA50019x000	50
20	CADNVA50020x000	50
21	CADNVA50021x000	25
22	CADNVA50022x000	25
23	CADNVA50023x000	25
24	CADNVA50024x000	25

### Ordering code

CADN VA 500 xx x xxx

① ② ③ ④ ⑤ ⑥

- ① Type
- ② Product style
- ③ Pitch
- ④ Poles (02-24)
- ⑤ Color
- ⑥ Standard 000 or Custom XXX

Color

0 Black	5 Green
1 Brown	6 Blue
2 Red	G Pale grey
3 Orange	8 Dark grey
4 Yellow	9 White

### Key Commercial data

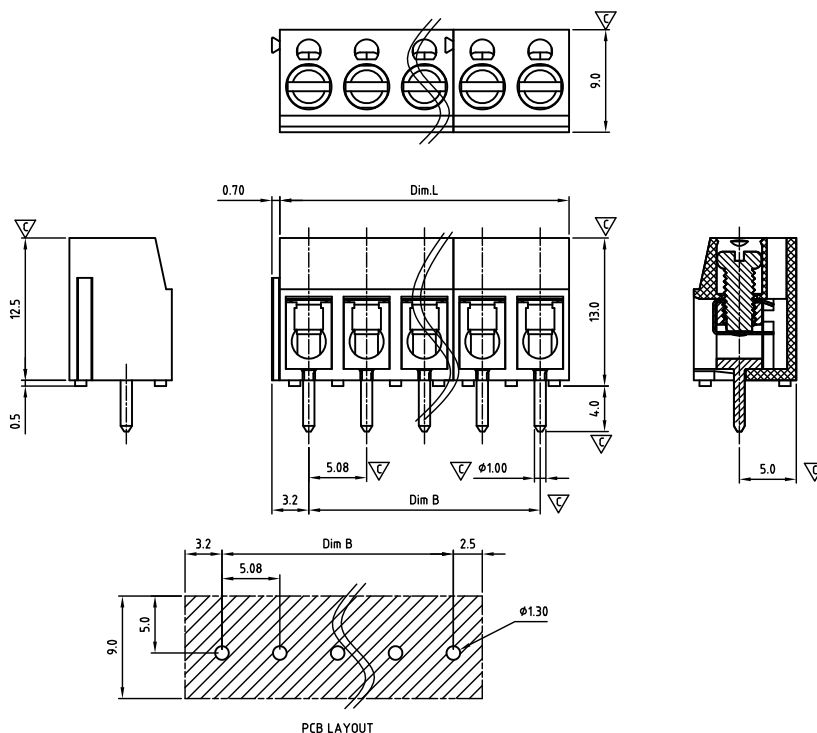
Custom tariff number	8536901100
Country of origin	CN (China)





## CADAHM508-SERIES

cAlus E501953



Critical dimension: 

Dim.L=Px5.08

Dim.B=(P-1)x5.08

P=Number of poles (02-24)

	Dim B	Dim L
0-30mm	+/- 0,15	+/- 0,20
over 30-60mm	+/- 0,20	+/- 0,25
over 60-90mm	+/- 0,25	+/- 0,30
over 90mm	+/- 0,30	+/- 0,40

Tolerance	
x.	+/- 0,50
x.x	+/- 0,30
x.xx	+/- 0,10
x°	+/- 1°
Units:mm	

### Technical data

Technical data in accordance with UL/CUL

	Use Group	B	C	D
Nominal voltage (V)	300	-	300	
Nominal current (A)	16	-	10	
Connection capacity (AWG)	26-14	-	26-14	

Technical data in accordance with IEC and VDE

Rated insulation voltage at pollution degree 2 (V)	250
Rated current/conductor cross-section (A/mm <sup>2</sup> )	17.5 / 1.5
Solid/stranded (mm <sup>2</sup> )	0.5-2.5 / 0.5-2.5
Surge voltage category/pollution degree	III / 3 III / 2 II / 2
Rated insulation voltage (V)	250 320 630
Rated surge voltage (kV)	4 4 4

### General data

Stripping length (mm)	6-7
Screw thread	M3.0
Tightening torque (Nm)	0.4
Insulation Withstanding Voltage	Ac1600 / 1min
Insulation Resistance	1000MΩ or more at DC500V
Using temperature range	-40°C-115°C

### Materials

Insulation material group	PA 66 I UL94 -V0
Wire guard	Stainless steel
Cage	Brass, Sn plated
Screw	Steel, Zn plated

### Packing information

Poles	Order Number	SPQ
2	CADAHM50802x000	650
3	CADAHM50803x000	400
4	CADAHM50804x000	300
5	CADAHM50805x000	250
6	CADAHM50806x000	250
7	CADAHM50807x000	240
8	CADAHM50808x000	150
9	CADAHM50809x000	150
10	CADAHM50810x000	110
11	CADAHM50811x000	100
12	CADAHM50812x000	100
13	CADAHM50813x000	90
14	CADAHM50814x000	90
15	CADAHM50815x000	80
16	CADAHM50816x000	80
17	CADAHM50817x000	80
18	CADAHM50818x000	80
19	CADAHM50819x000	70
20	CADAHM50820x000	65
21	CADAHM50821x000	60
22	CADAHM50822x000	60
23	CADAHM50823x000	60
24	CADAHM50824x000	60

### Ordering code

CADA HM 508 xx x xxx

① ② ③ ④ ⑤ ⑥

- ① Type
- ② Product style
- ③ Pitch
- ④ Poles (02-24)
- ⑤ Color
- ⑥ Standard 000 or Custom XXX

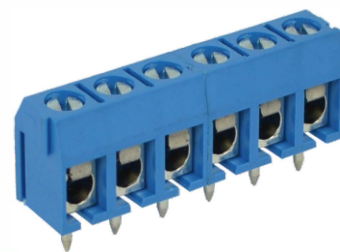
Color

0 Black	5 Green
1 Brown	6 Blue
2 Red	G Pale grey
3 Orange	8 Dark grey
4 Yellow	9 White

### Key Commercial data

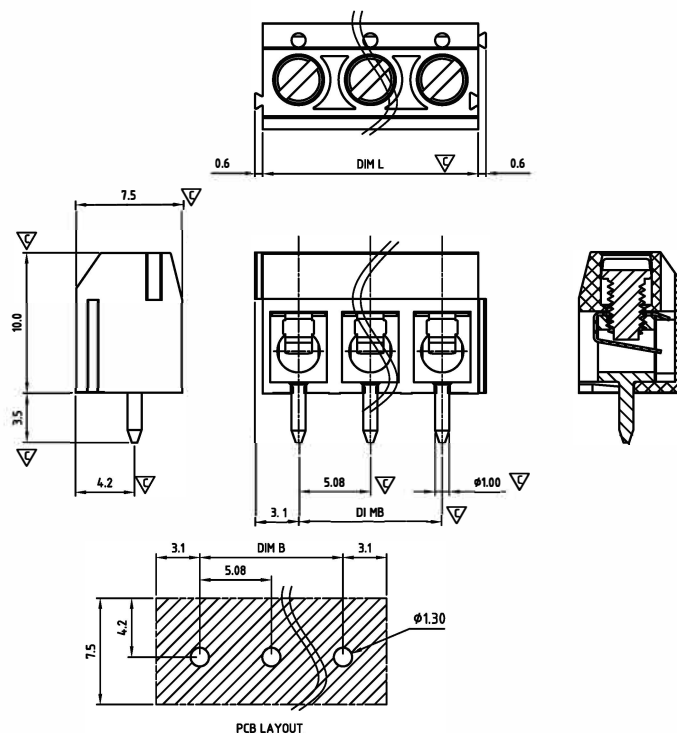
Custom tariff number 8536901100

Country of origin CN (China)



## CADBHM508-SERIES (short body)

**cAlus** E501953



Critical dimension:

Dim. L = P x 5.08

Dim. B = (P - 1) x 5.08

P = Number of poles (02-24)

	Dim B	Dim L
0-30mm	+/- 0,15	+/- 0,20
over 30-60mm	+/- 0,20	+/- 0,25
over 60-90mm	+/- 0,25	+/- 0,30
over 90mm	+/- 0,30	+/- 0,40

Tolerance	
x.	+/- 0,50
x.x	+/- 0,30
x.xx	+/- 0,10
x°	+/- 1°
Units: mm	

### Technical data

Technical data in accordance with UL/CUL

	Use Group	B	C	D
Nominal voltage (V)	300	-	300	
Nominal current (A)	15	-	10	
Connection capacity (AWG)	22-14	-	22-14	

Technical data in accordance with IEC and VDE

Rated insulation voltage at pollution degree 2 (V)	250		
Rated current/conductor cross-section (A/mm²)	17.5 / 1.5		
Solid/stranded (mm²)	0.5-2.5 / 0.5-2.5		
Surge voltage category/pollution degree	III / 3	III / 2	II / 2
Rated insulation voltage (V)	250	320	630
Rated surge voltage (kV)	4	4	4

### General data

Stripping length (mm)	6-7
Screw thread	M2.6
Tightening torque (Nm)	0.4
Insulation Withstanding Voltage	AC 1600 / 1 min
Insulation Resistance	1000MΩ or more at DC500V
Using temperature range	-40°C-115°C

### Materials

Insulation material group	PA 66 I UL94 -V0
Wire guard	Stainless steel
Cage	Brass, Sn plated
Screw	Steel, Zn plated

### Packing information

Poles	Order Number	SPQ
2	CADBHM50802x000	900
3	CADBHM50803x000	600
4	CADBHM50804x000	450
5	CADBHM50805x000	360
6	CADBHM50806x000	300
7	CADBHM50807x000	240
8	CADBHM50808x000	240
9	CADBHM50809x000	185
10	CADBHM50810x000	165
11	CADBHM50811x000	160
12	CADBHM50812x000	150
13	CADBHM50813x000	150
14	CADBHM50814x000	150
15	CADBHM50815x000	140
16	CADBHM50816x000	140
17	CADBHM50817x000	140
18	CADBHM50818x000	95
19	CADBHM50819x000	90
20	CADBHM50820x000	90
21	CADBHM50821x000	80
22	CADBHM50822x000	75
23	CADBHM50823x000	75
24	CADBHM50824x000	75

### Ordering code

**CADB HM 508 xx x xxx**

① ② ③ ④ ⑤ ⑥

- ① Type
- ② Product style
- ③ Pitch
- ④ Poles (02-24)
- ⑤ Color
- ⑥ Standard 000 or Custom XXX

Color	
0 Black	5 Green
1 Brown	6 Blue
2 Red	G Pale grey
3 Orange	8 Dark grey
4 Yellow	9 White

### Key Commercial data

Custom tariff number	8536901100
Country of origin	CN (China)

## TERMINAL BLOCKS

### COLOR SIMILAR TO RAL XXX



#### BLACK

Similar to RAL9005



#### BROWN

Similar to RAL8017



#### RED

Similar to RAL3001



#### ORANGE

Similar to RAL2011



#### GREEN

Similar to RAL6018/K



#### LIGHT GREEN

Similar to RAL6018/U



#### BLUE

Similar to RAL5015



#### LIGHT GREY

Similar to RAL7035



#### DARK GREY

Similar to RAL7004



#### YELLOW

Similar to RAL1018



#### WHITE

Similar to RAL1102



#### YELOW-GREEN

Applied to earth terminal

### COLORS AND MARKING

We have many sets of high precision injecting machine. All the machines can process a variety of high precision injecting products, in order to meet all kinds of components and customer's needs. Also, our factory is using concentrated dry feeding system and automatic suction machine, so that the machines can supply material automatically. We only need one person to run this production line, which is the best part of

our precision injecting machines. Furthermore, we do make special features in the plastic housing to prevent mismatching, increase creeping distance or prevent PCB parts to have wrong orientation. In addition to this we do special marking and even special color if needed.

Terminal blocks and headers can be marked by different methods. We offer our customers two kinds

of printing: ink-jet printing, the cost-effective, fast and flexible solution to print letters or individual characters. The tampon printing is also available. The Tampon print guarantees the best quality and definition. A variety of letters and characters are possible, even on corners and round surfaces. Both types of printing are wipe-proof; the tampon-printing method is also resistant to isopropyl alcohol.

## AUTOMATED ASSEMBLY

According to the different characteristics of products, we have divided our assembly production line into two:

automated assembly line and manual assembly line. Our professional engineers not only have the ability to design the labor power into the automated assembly system, but also are able to develop and improve the automated assembly machines, as well as defective product detecting system.

Hence we can ensure the quality of product also improve the productivity. Recent years, in order to reduce the production costs and improve market competitiveness, CABCON has reduced the cost in manual production and focused

on the development of automation equipment, to ensure product quality and production capacity. Production efficiency will lead the delivery time become more accurate.

## INJECTION MOLDING

Right now CABCON has many sets of high precision injecting machine. All the machines are able to process a variety of high precision injecting products, in order to meet all kinds of components and OEM / ODM customer's needs. Also our factory is using concentrated dry feeding system and automatic suction machine, so that the machines can supply material automatically. CABCON only needs one person to run this production line, which is the best part of our precision injecting machines.

## SCREW AND METAL CAGE

CABCON has all kinds of precision lathes, drilling, tapping machines. Also our production line has a number of advanced and efficient CCD automatic detecting systems.

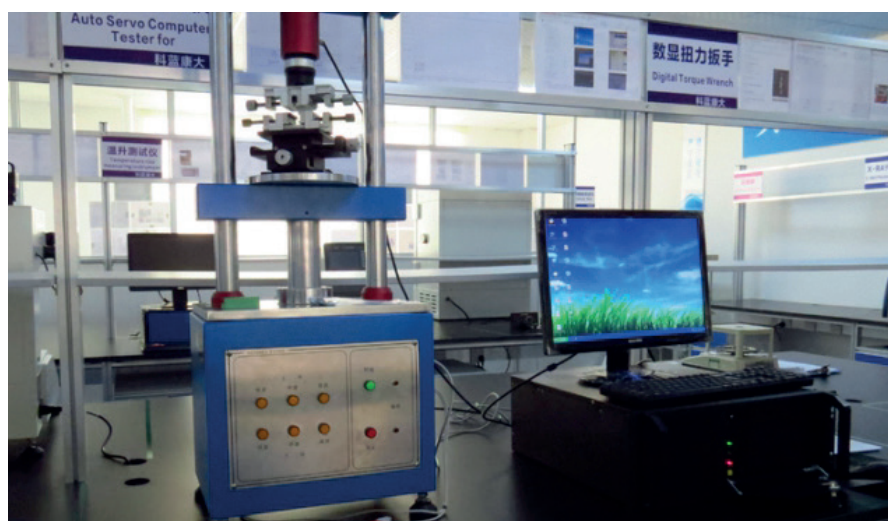
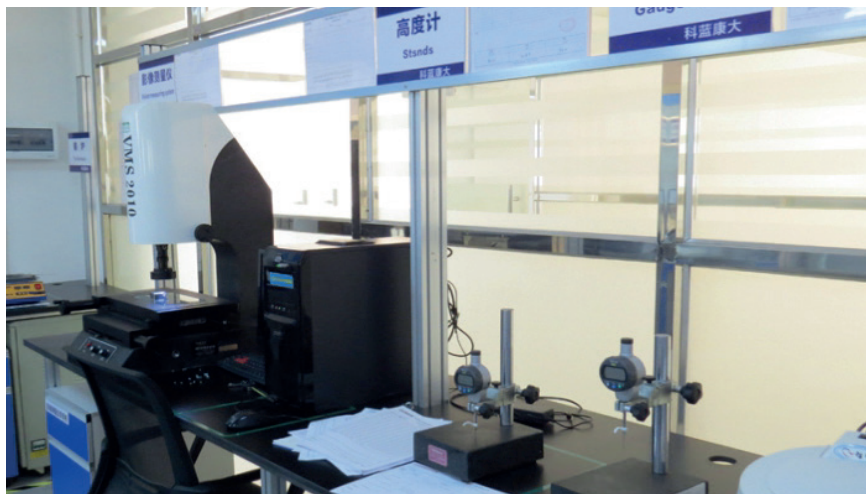




## TESTING LABORATORY

ISO/IEC17025 standard is applied in CABCON's laboratory. Our lab has included the testing equipments of electrical, environmental, mechanical and vibration.

All equipments are comply with UL1059 UL486E IEC60947 IEC60998 IEC61984 GB13140 to monitor the production process, hence ensure the quality and stability of CABCON's product.



## COMPANY ABILITY



ISO-9001

# CREATING VALUE



Cabcon A/S · Stamholmen 193A · DK-2650 Hvidovre · Denmark · Tel. +45 38 76 03 15 · [www.cabcon.dk](http://www.cabcon.dk)

Cabcon A/S · Trollåsveien 4 · 1414 Trollåsen · Norway · Tel. +47 93 200 204 · [www.cabcon.dk](http://www.cabcon.dk)

Cabcon A/S · Stora Åvägen 21 · 436 34 Askim · Sweden · Tel. +46 735 01 33 24 · [www.cabcon.dk](http://www.cabcon.dk)

Cabcon Asia · Unit 8, 28/F, Cable TV Tower · Hoi Shing Road, Tsuen Wan · Hong Kong