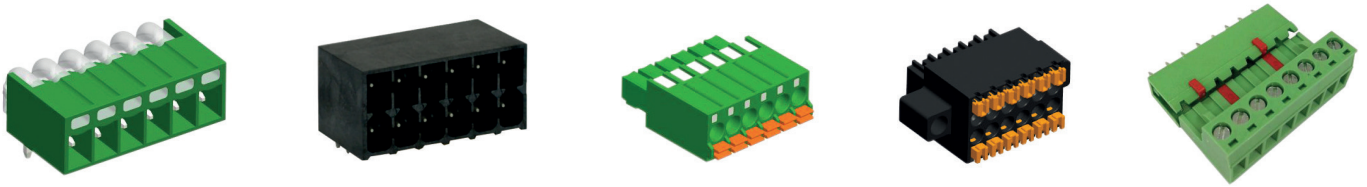


CREATING VALUE

PCB BARRIER TYPE



CREATING VALUE



COMPANY PROFILE

Cabcon Contacts is a part of the Cabcon Group, which was founded in Copenhagen, Denmark in 2003. Cabcon Contacts are a professional manufacturer of terminal block with a "state of the art" production site in China. The focus in our ISO9001 approved factory in China is quality, lean production and competitive pricing.

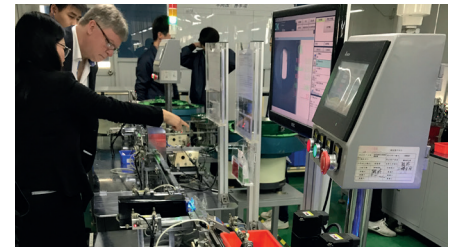
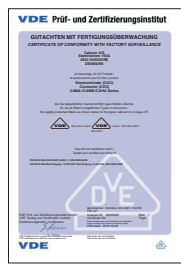
Hard investments have been made in a fully automated production line. Along the production line CCTV systems are installed to monitor and control the production line from the injection, molding, stamping and to the final packing.

To meet the customers demand we offer ink-jet printing and tampon printing and our products can be delivered in trays, boxes and/or Tape on reel.

PRODUCT RANGE

- // Screw type plugs and headers for pluggable system
- // Screwless type plugs for pluggable system
- // PCB screw rising clamp system
- // PCB screw wire protector system
- // PCB spring-cage system
- // PCB barrier screw system
- // Special type Terminal blocks

According to international requirements, most of our products are and will be designed to meet UL and VDE regulations.



CABCON GROUP

As experienced experts in electromechanical products and cable assemblies we support our customers and partners around the world with products, solutions and services in the industrial environment. With our motto "Creating Value" we continuously develop innovative, sustainable and useful solutions for our customers individual needs.

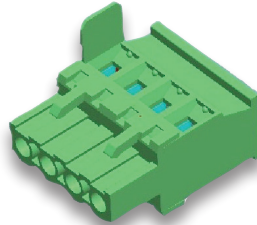
With headquarter in Denmark, divisions in Sweden, Norway and Hong Kong - we meet the customers on site. With our international sales setup, and warehouses in both Europe and Asia we create value with local presence, but global logistics.



OUR SERVICE

CUSTOMIZED PRODUCTS

Terminal blocks or headers for special applications can be developed at CABCON to meet the customer's requirements. Modifications of standard housing and integration of an additional wire connection within the plastic housing are possible.



PRINTING

Terminal blocks and headers can be marked by different methods. CABCON offers its customers two kinds of printing: Ink-jet printing, the cost-effective, fast and flexible solution to print letters or individual characters. The tampon printing is also available. The Tampon print guarantees the best quality and definition. A variety of letters and characters are possible, even on corners and round surfaces. Both types of printing are wipe-proof; the tampon-printing method is also resistant to isopropyl alcohol.



PACKING

We can pack in Tape-on-reel, Trays, Boxes. For printed circuit board assembly in automated processes. CABCON can offer terminal blocks and headers on tape-on-reel, in trays or in boxes. Dimensions and shapes are adapted to the assembly machine. Base on request the tapes/trays/boxes can be supplied in antistatic packaging for ESD protection. Terminal blocks and headers in tape-on-reel or tray packing will be delivered with pick & place pad where needed.

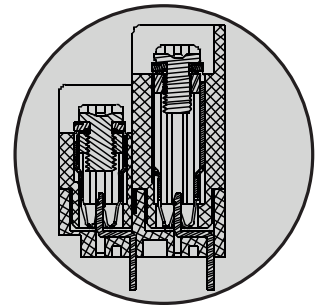


THE CATALOGUE

We have made documentation easy to read, by using icons and keeping all relevant information's on one page. Approvals is showed in the drawing, and mating parts is mentioned where available, so it is easy to find mating options. We are trying to update the catalogue frequently for you to have latest information's available.

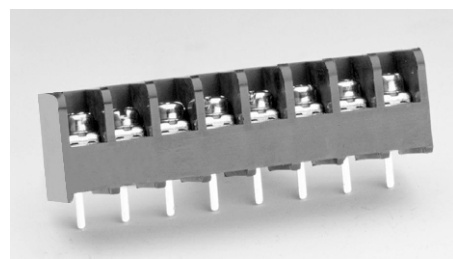


THIS CATALOGUE CONTAINS PCB BARRIER TYPE

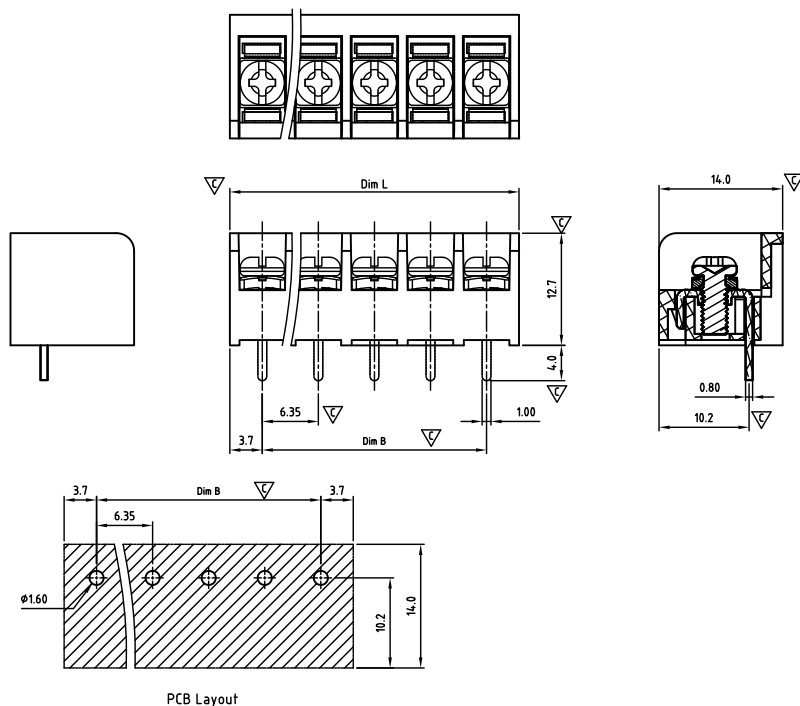


The information in this document is subject to change without further notice.

CAZDAA635-SERIES



cAlus E501953



Critical dimension: ▽

Dim.L=(P-1)x6.25+7.4

Dim.B=(P-1)x6.35

P=Number of poles (02-24)

	Dim B	Dim L
0-30mm	+/- 0,15	+/- 0,20
over 30-60mm	+/- 0,20	+/- 0,25
over 60-90mm	+/- 0,25	+/- 0,30
over 90mm	+/- 0,30	+/- 0,40

Tolerance	
x.	+/- 0,50
x.x	+/- 0,30
x.xx	+/- 0,10
x°	+/- 1°
Units:mm	

Technical data

Technical data in accordance with UL/CUL

	Use Group	B	C	D
Nominal voltage (V)	300	-	300	
Nominal current (A)	15	-	10	
Connection capacity(AWG)	22-16	-	22-16	

Technical data in accordance with IEC

Rated insulation voltage at pollution degree 2 (V)	
Rated current/conductor cross-section (A/mm²)	
Solid/stranded(mm²)	
Surge voltage category/pollution degree	
Rated insulation voltage(V)	
Rated surge voltage(kV)	

General data

Stripping length(mm)	6-7
Screw thread	M3
Tightening torque(lb-in)	5.3
Insulation Withstanding Voltage	AC 1600 / 1min
Insulation Resistance	1000MΩ or more at DC500V
Using temperature range	-40°C-115°C
Soldering temperature	250±5°C/5s

Materials

Insulation material group	PA 66 I UL94 - V0
Contact	Brass, Tin plated
Screw	Steel, Zn plated

Packing information

Poles	Order Number	SPQ
2	CAZDAA63502x000	335
3	CAZDAA63503x000	210
4	CAZDAA63504x000	165
5	CAZDAA63505x000	160
6	CAZDAA63506x000	105
7	CAZDAA63507x000	120
8	CAZDAA63508x000	90
9	CAZDAA63509x000	90
10	CAZDAA63510x000	80
11	CAZDAA63511x000	65
12	CAZDAA63512x000	65
13	CAZDAA63513x000	60
14	CAZDAA63514x000	60
15	CAZDAA63515x000	40
16	CAZDAA63516x000	40
17	CAZDAA63517x000	40
18	CAZDAA63518x000	40
19	CAZDAA63519x000	40
20	CAZDAA63520x000	25
21	CAZDAA63521x000	25
22	CAZDAA63522x000	25
23	CAZDAA63523x000	25
24	CAZDAA63524x000	25
25		

Ordering code

CAZD AA 635 xx x xxx

① ② ③ ④ ⑤ ⑥

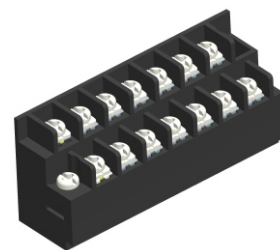
- ① Type
- ② Product style
- ③ Pitch
- ④ Poles (02-24)
- ⑤ Color
- ⑥ Standard 000 or Custom XXX

Color

0 Black

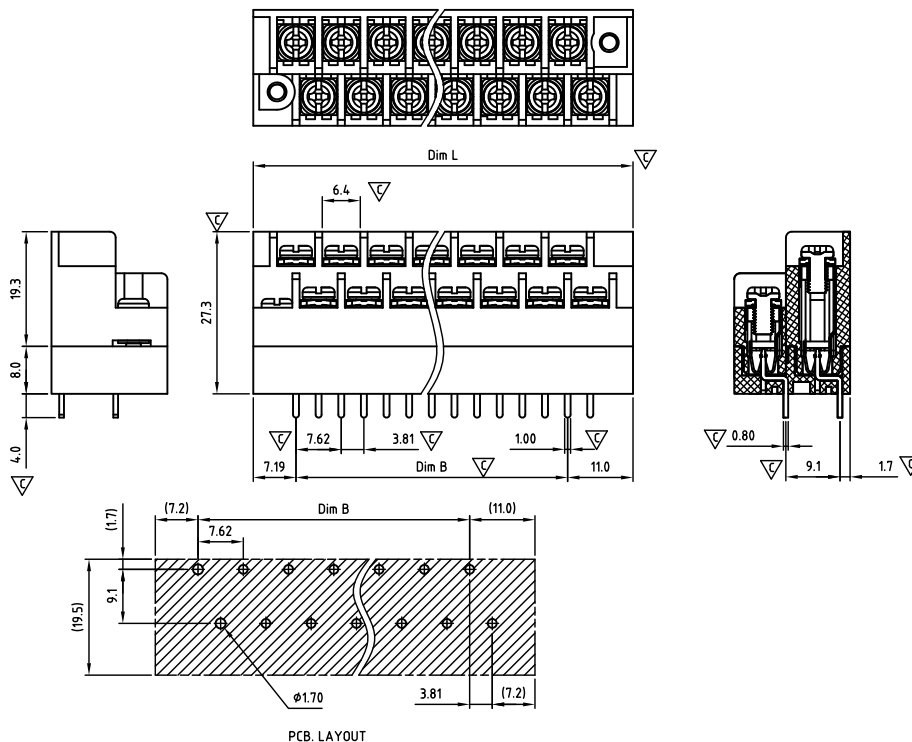
Key Commercial data

Custom tariff number	8536901000
Country of origin	CN (China)



CAZABA762-SERIES

cAlus E501953



Critical dimension: ▽

Dim.L=(P-1)x7.62+18.19

Dim.B=(P-1)x7.62

P=1/2Number of poles (04-24)

	Dim B	Dim L
0-30mm	+/- 0,15	+/- 0,20
over 30-60mm	+/- 0,20	+/- 0,25
over 60-90mm	+/- 0,25	+/- 0,30
over 90mm	+/- 0,30	+/- 0,40

Technical data

Technical data in accordance with UL/cUL

	Use Group	B	C	D
Nominal voltage (V)	300	-	300	
Nominal current (A)	15	-	10	
Connection capacity(AWG)	22-12	-	22-12	

Technical data in accordance with IEC

Rated insulation voltage at pollution degree 2 (V)	
Rated current/conductor cross-section (A/mm ²)	
Solid/stranded(mm ²)	
Surge voltage category/pollution degree	
Rated insulation voltage(V)	
Rated surge voltage(kV)	

General data

Stripping length(mm)	5-6
Screw thread	M3
Tightening torque(lb-in)	7
Insulation Withstanding Voltage	AC 1600 / 1min
Insulation Resistance	1000MΩ or more at DC500V
Using temperature range	-40°C-115°C
Soldering temperature	250±5°C/5s

Materials

Insulation material group	PA 66 I UL94 -V0
Contact	C5210, Tin plated
Screw	Steel, Ni plated

Packing information

Poles	Order Number	SPQ
2*2	CAZABA76204x000	72
2*3	CAZABA76206x000	45
2*4	CAZABA76208x000	45
2*5	CAZABA76210x000	36
2*6	CAZABA76212x000	30
2*7	CAZABA76214x000	27
2*8	CAZABA76216x000	24
2*9	CAZABA76218x000	24
2*10	CAZABA76220x000	15
2*11	CAZABA76222x000	15
2*12	CAZABA76224x000	15

Ordering code

CAZA BA 762 xx x xxx

① ② ③ ④ ⑤ ⑥

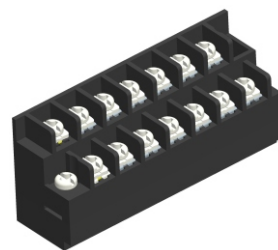
- ① Type
- ② Product style
- ③ Pitch
- ④ Poles (04-24)
- ⑤ Color
- ⑥ Standard 000 or Custom XXX

Color

0 Black

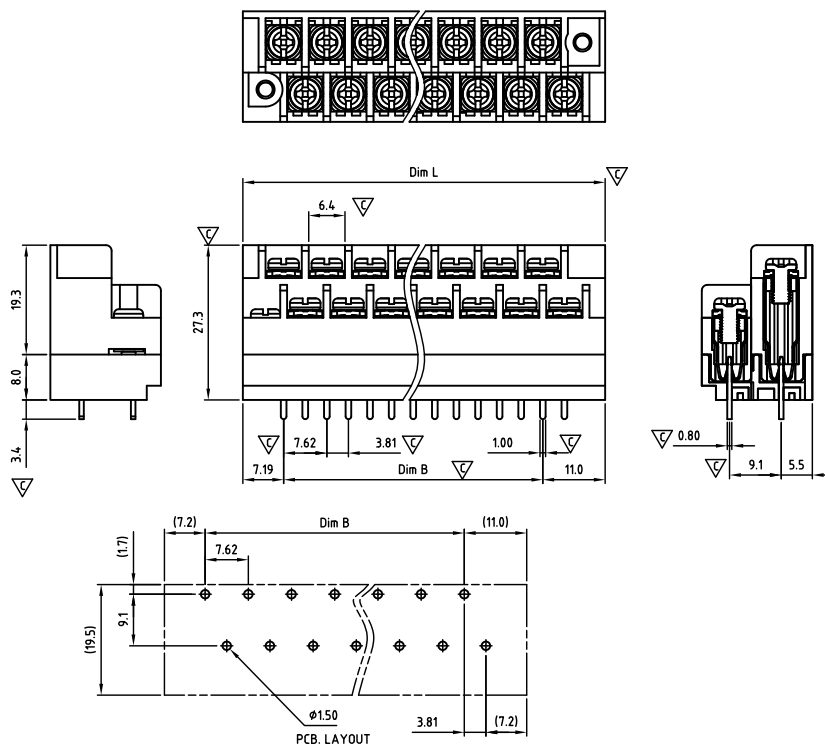
Key Commercial data

Custom tariff number	8536901000
Country of origin	CN (China)



CAZABB762-SERIES

cAlus E501953



Technical data

Technical data in accordance with UL/CUL

	Use Group	B	C	D
Nominal voltage (V)	300	-	300	
Nominal current (A)	15	-	10	
Connection capacity(AWG)	22-12	-	22-12	

Technical data in accordance with IEC

Rated insulation voltage at pollution degree 2 (V)	
Rated current/conductor cross-section (A/mm ²)	
Solid/stranded(mm ²)	
Surge voltage category/pollution degree	
Rated insulation voltage(V)	
Rated surge voltage(kV)	

General data

Stripping length(mm)	5-6
Screw thread	M3
Tightening torque(lb-in)	7
Insulation Withstanding Voltage	AC 1600 / 1min
Insulation Resistance	1000MΩ or more at DC500V
Using temperature range	-40°C-115°C
Soldering temperature	250±5°C/5s

Materials

Insulation material group	PA 66 I UL94 -V0
Contact	C5210, Tin plated
Screw	Steel, Ni plated

Packing information

Poles	Order Number	SPQ
2*2	CAZABB76204x000	72
2*3	CAZABB76206x000	45
2*4	CAZABB76208x000	45
2*5	CAZABB76210x000	36
2*6	CAZABB76212x000	30
2*7	CAZABB76214x000	27
2*8	CAZABB76216x000	24
2*9	CAZABB76218x000	24
2*10	CAZABB76220x000	15
2*11	CAZABB76222x000	15
2*12	CAZABB76224x000	15

Ordering code

CAZA BB 762 xx x xxx

① ② ③ ④ ⑤ ⑥

- Type
- Product style
- Pitch
- Poles (04-24)
- Color
- Standard 000 or Custom XXX

Color

0 Black

Key Commercial data

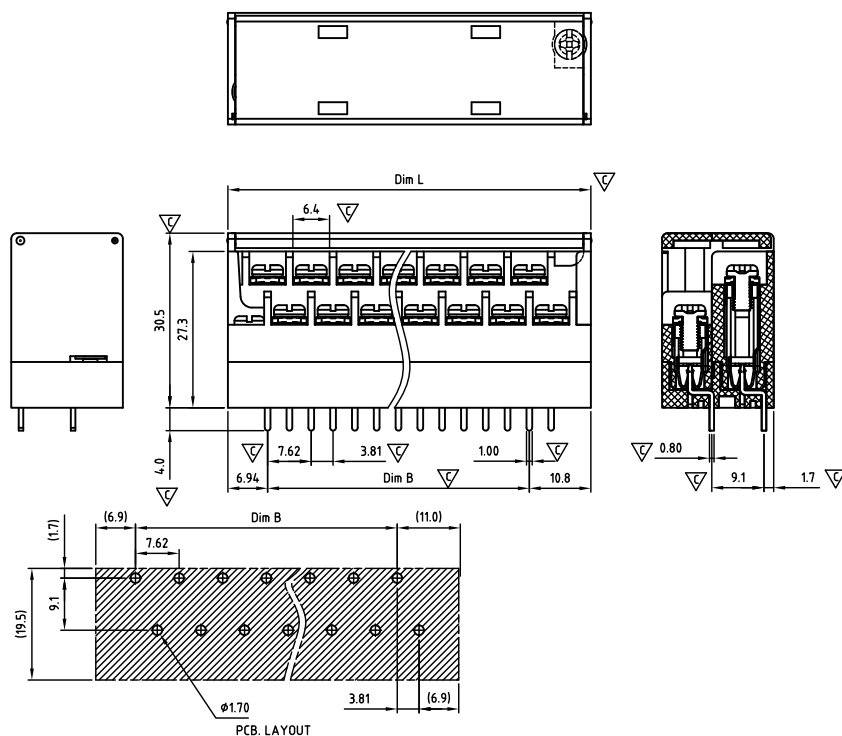
Custom tariff number	8536901000
Country of origin	CN (China)



CAZADA762-SERIES (WITH COVER)

Pitch 7,62mm

cAlus E501953



Critical dimension: ▽

Dim.L=(P-1)×7.62+18.19

Dim.B=(P-1)×7.62

P=1/2 Number of poles (04-24)

	Dim B	Dim L
0-30mm	+/- 0,15	+/- 0,20
over 30-60mm	+/- 0,20	+/- 0,25
over 60-90mm	+/- 0,25	+/- 0,30
over 90mm	+/- 0,30	+/- 0,40

Tolerance	
x.	+/- 0,50
x.x	+/- 0,30
x.xx	+/- 0,10
x°	+/- 1°
Units:mm	

Technical data

Technical data in accordance with UL/cUL

	Use Group	B	C	D
Nominal voltage (V)	300	-	300	
Nominal current (A)	15	-	10	
Connection capacity(AWG)	22-12	-	22-12	

Technical data in accordance with IEC

Rated insulation voltage at pollution degree 2 (V)	
Rated current/conductor cross-section (A/mm²)	
Solid/stranded(mm²)	
Surge voltage category/pollution degree	
Rated insulation voltage(V)	
Rated surge voltage(kV)	

General data

Stripping length(mm)	5-6
Screw thread	M3
Tightening torque(lb-in)	7
Insulation Withstanding Voltage	AC 1600 / 1min
Insulation Resistance	1000MΩ or more at DC500V
Using temperature range	-40°C-115°C
Soldering temperature	250±5°C/5s

Materials

Insulation material group	PA 66 I UL94 -V0
Contact	C5210, Tin plated
Screw	Steel, Ni plated

Packing information

Poles	Order Number	SPQ
2*2	CAZADA76204x000	72
2*3	CAZADA76206x000	45
2*4	CAZADA76208x000	45
2*5	CAZADA76210x000	36
2*6	CAZADA76212x000	30
2*7	CAZADA76214x000	27
2*8	CAZADA76216x000	24
2*9	CAZADA76218x000	24
2*10	CAZADA76220x000	15
2*11	CAZADA76222x000	15
2*12	CAZADA76224x000	15

Ordering code

CAZA DA 762 xx x xxx

① ② ③ ④ ⑤ ⑥

- ① Type
- ② Product style
- ③ Pitch
- ④ Poles (04-24)
- ⑤ Color
- ⑥ Standard 000 or Custom XXX

Color

0 Black

Key Commercial data

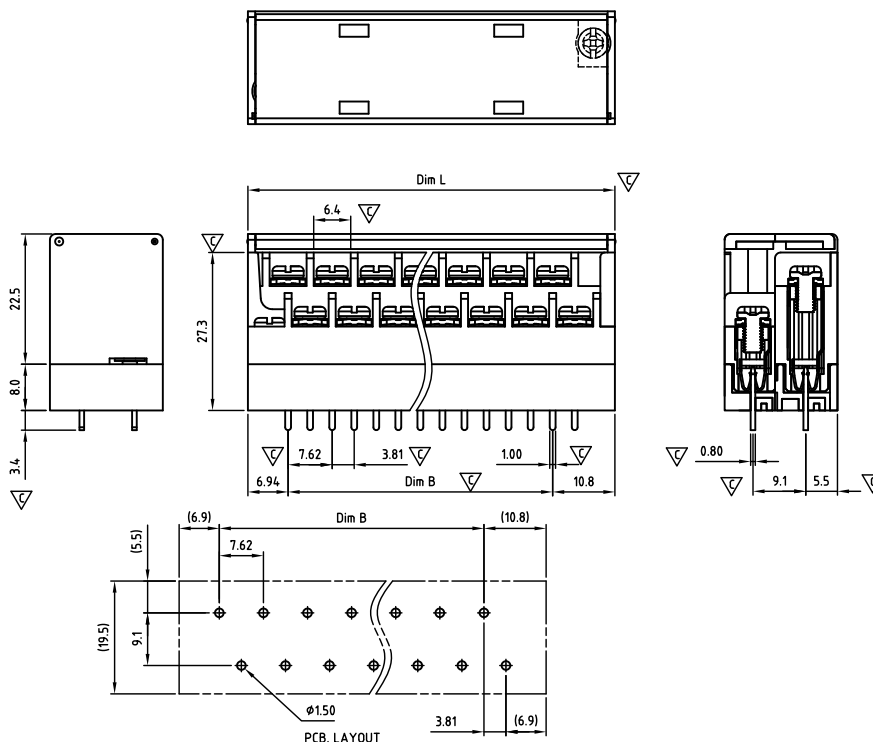
Custom tariff number	8536901000
Country of origin	CN (China)



CAZADB762-SERIES (WITH COVER)

Pitch 7,62mm

cAlus E501953



Critical dimension: ▽

Dim.L=(P-1)x7.62+18.19

Dim.B=(P-1)x7.62

P=1/2Number of poles (04-24)

	Dim B	Dim L
0-30mm	+/- 0,15	+/- 0,20
over 30-60mm	+/- 0,20	+/- 0,25
over 60-90mm	+/- 0,25	+/- 0,30
over 90mm	+/- 0,30	+/- 0,40

Tolerance	
x.	+/- 0,50
x.x	+/- 0,30
x.xx	+/- 0,10
x°	+/- 1°
Units:mm	

Technical data

Technical data in accordance with UL/CUL

	Use Group	B	C	D
Nominal voltage (V)	300	-	300	
Nominal current (A)	15	-	10	
Connection capacity(AWG)	22-12	-	22-12	

Technical data in accordance with IEC

Rated insulation voltage at pollution degree 2 (V)	
Rated current/conductor cross-section (A/mm ²)	
Solid/stranded(mm ²)	
Surge voltage category/pollution degree	
Rated insulation voltage(V)	
Rated surge voltage(kV)	

General data

Stripping length(mm)	5-6
Screw thread	M3
Tightening torque(lb-in)	7
Insulation Withstanding Voltage	AC 1600 / 1min
Insulation Resistance	1000MΩ or more at DC500V
Using temperature range	-40°C-115°C
Soldering temperature	250±5°C/5s

Materials

Insulation material group	PA 66 I UL94 -V0
Contact	C5210, Tin plated
Screw	Steel, Ni plated

Packing information

Poles	Order Number	SPQ
2*2	CAZADB76204x000	72
2*3	CAZADB76206x000	45
2*4	CAZADB76208x000	45
2*5	CAZADB76210x000	36
2*6	CAZADB76212x000	30
2*7	CAZADB76214x000	27
2*8	CAZADB76216x000	24
2*9	CAZADB76218x000	24
2*10	CAZADB76220x000	15
2*11	CAZADB76222x000	15
2*12	CAZADB76224x000	15

Ordering code

CAZA DB 762 xx x xxx

① ② ③ ④ ⑤ ⑥

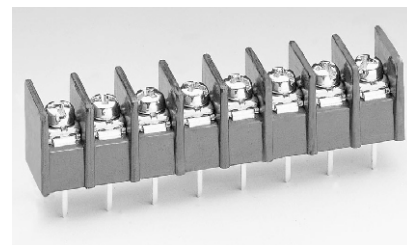
- ① Type
- ② Product style
- ③ Pitch
- ④ Poles (04-24)
- ⑤ Color
- ⑥ Standard 000 or Custom XXX

Color

0 Black

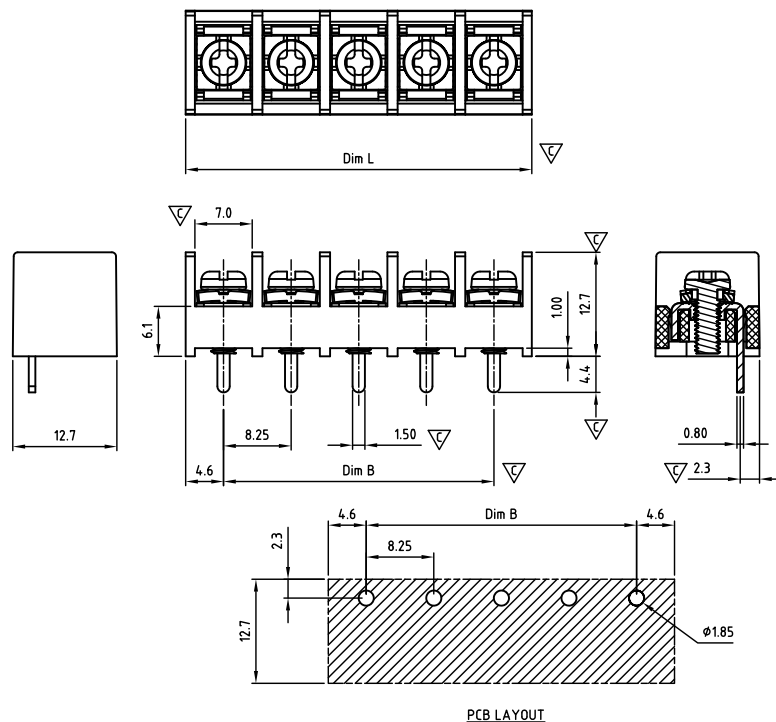
Key Commercial data

Custom tariff number	8536901000
Country of origin	CN (China)



CAZCAA825-SERIES

cAlus E501953



Critical dimension: ∇

Dim.L=(P-1)x8.25+9.25

Dim.B=(P-1)x8.25

P=Number of poles (02-24)

	Dim B	Dim L
0-30mm	+/- 0,15	+/- 0,20
over 30-60mm	+/- 0,20	+/- 0,25
over 60-90mm	+/- 0,25	+/- 0,30
over 90mm	+/- 0,30	+/- 0,40

Tolerance	
x.	+/- 0,50
x.x	+/- 0,30
x.xx	+/- 0,10
x°	+/- 1°

Units:mm

Technical data

Technical data in accordance with UL/CUL

	Use Group	B	C	D
Nominal voltage (V)	300	-	300	
Nominal current (A)	20	-	10	
Connection capacity(AWG)	26-12	-	26-12	

Technical data in accordance with IEC

Rated insulation voltage at pollution degree 2 (V)	
Rated current/conductor cross-section (A/mm ²)	
Solid/stranded(mm ²)	
Surge voltage category/pollution degree	
Rated insulation voltage(V)	
Rated surge voltage(kV)	

General data

Stripping length(mm)	6-7
Screw thread	M3
Tightening torque(lb-in)	10
Insulation Withstanding Voltage	AC 1600 / 1min
Insulation Resistance	1000MΩ or more at DC500V
Using temperature range	-40°C-115°C
Soldering temperature	250±5°C/5s

Materials

Insulation material group	PC I UL94 -V0
Contact	Brass, Tin plated
Screw	Steel, Zn plated

Packing information

Poles	Order Number	SPQ
2	CAZCAA82502x000	360
3	CAZCAA82503x000	180
4	CAZCAA82504x000	180
5	CAZCAA82505x000	110
6	CAZCAA82506x000	84
7	CAZCAA82507x000	80
8	CAZCAA82508x000	60
9	CAZCAA82509x000	55
10	CAZCAA82510x000	72
11	CAZCAA82511x000	50
12	CAZCAA82512x000	40
13	CAZCAA82513x000	40
14	CAZCAA82514x000	40
15	CAZCAA82515x000	25
16	CAZCAA82516x000	25
17	CAZCAA82517x000	25
18	CAZCAA82518x000	25
19	CAZCAA82519x000	25
20	CAZCAA82520x000	25
21	CAZCAA82521x000	25
22	CAZCAA82522x000	25
23	CAZCAA82523x000	25
24	CAZCAA82524x000	25

Ordering code

CAZC AA 825 xx x xxx

① ② ③ ④ ⑤ ⑥

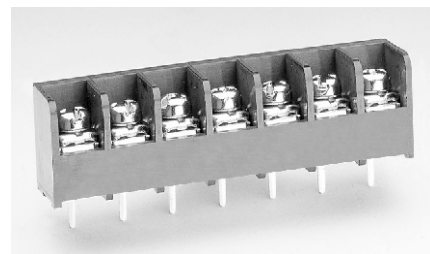
- ① Type
- ② Product style
- ③ Pitch
- ④ Poles (02-24)
- ⑤ Color
- ⑥ Standard 000 or Custom XXX

Color

0 Black

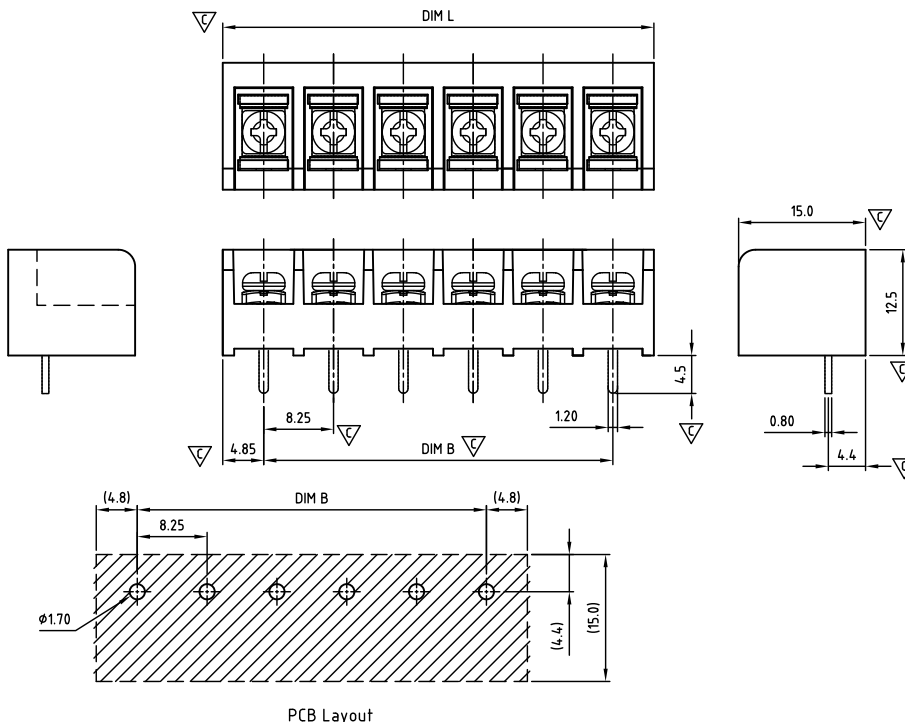
Key Commercial data

Custom tariff number	8536901000
Country of origin	CN (China)



CAZDAA825-SERIES

cAlus E501953



Critical dimension: ▽

Dim.L=(P-1)x8.25+9.70

Dim.B=(P-1)x8.25

P=Number of poles (02-24)

	Dim B	Dim L
0-30mm	+/- 0,15	+/- 0,20
over 30-60mm	+/- 0,20	+/- 0,25
over 60-90mm	+/- 0,25	+/- 0,30
over 90mm	+/- 0,30	+/- 0,40

Tolerance	
x.	+/- 0,50
x.x	+/- 0,30
x.xx	+/- 0,10
x°	+/- 1°
Units:mm	

Technical data

Technical data in accordance with UL/CUL

	Use Group	B	C	D
Nominal voltage (V)	300	-	300	
Nominal current (A)	20	-	10	
Connection capacity(AWG)	22-16	-	22-16	

Technical data in accordance with IEC

Rated insulation voltage at pollution degree 2 (V)	
Rated current/conductor cross-section (A/mm²)	
Solid/stranded(mm²)	
Surge voltage category/pollution degree	
Rated insulation voltage(V)	
Rated surge voltage(kV)	

General data

Stripping length(mm)	6-7
Screw thread	M3
Tightening torque(lb-in)	8.8
Insulation Withstanding Voltage	AC 1600 / 1min
Insulation Resistance	1000MΩ or more at DC500V
Using temperature range	-40°C-115°C
Soldering temperature	250±5°C/5s

Materials

Insulation material group	PA 66 I UL94 -V0
Contact	Brass, Tin plated
Screw	Steel, Zn plated

Packing information

Poles	Order Number	SPQ
2	CAZDAA82502x000	270
3	CAZDAA82503x000	189
4	CAZDAA82504x000	100
5	CAZDAA82505x000	95
6	CAZDAA82506x000	84
7	CAZDAA82507x000	72
8	CAZDAA82508x000	60
9	CAZDAA82509x000	60
10	CAZDAA82510x000	60
11	CAZDAA82511x000	45
12	CAZDAA82512x000	45
13	CAZDAA82513x000	45
14	CAZDAA82514x000	45
15	CAZDAA82515x000	24
16	CAZDAA82516x000	24
17	CAZDAA82517x000	24
18	CAZDAA82518x000	24
19	CAZDAA82519x000	24
20	CAZDAA82520x000	24
21	CAZDAA82521x000	20
22	CAZDAA82522x000	20
23	CAZDAA82523x000	20
24	CAZDAA82524x000	20

Ordering code

CAZD AA 825 xx x xxx

① ② ③ ④ ⑤ ⑥

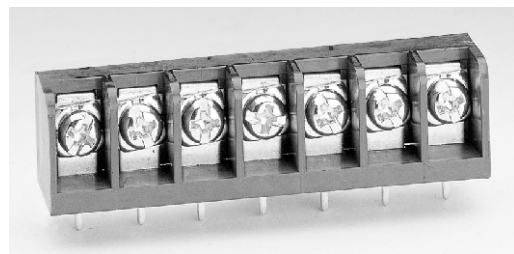
- ① Type
- ② Product style
- ③ Pitch
- ④ Poles (02-24)
- ⑤ Color
- ⑥ Standard 000 or Custom XXX

Color

0 Black

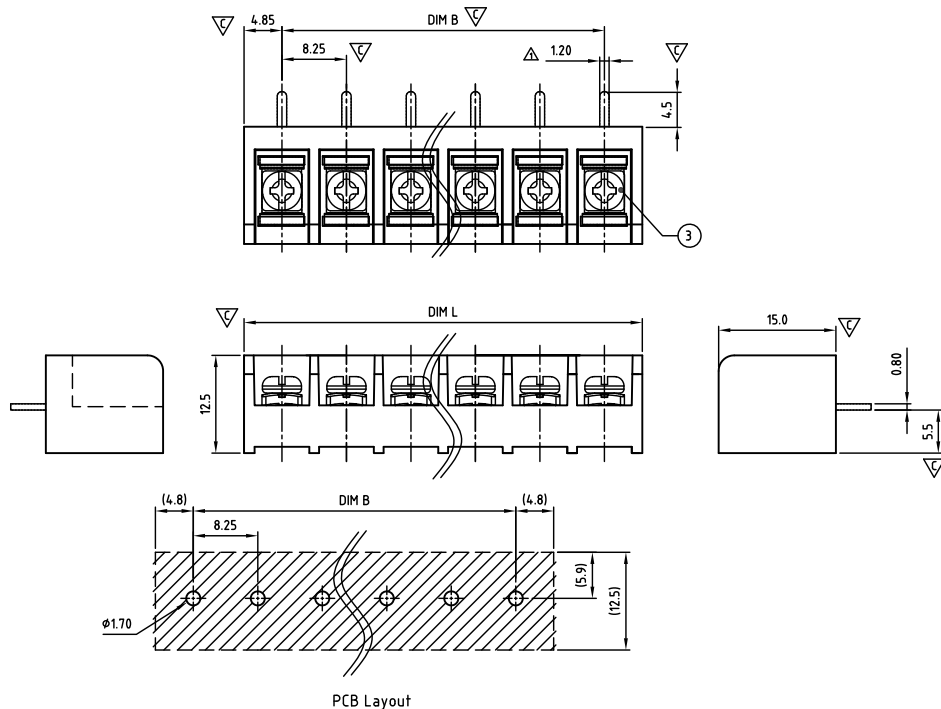
Key Commercial data

Custom tariff number	8536901000
Country of origin	CN (China)



CAZDAB825-SERIES

cAlus E501953



Critical dimension: ▽

Dim.L=(P-1)x8.25+9.70

Dim.B=(P-1)x8.25

P=Number of poles (02-24)

	Dim B	Dim L
0-30mm	+/- 0,15	+/- 0,20
over 30-60mm	+/- 0,20	+/- 0,25
over 60-90mm	+/- 0,25	+/- 0,30
over 90mm	+/- 0,30	+/- 0,40

Tolerance	
x.	+/- 0,50
x.x	+/- 0,30
x.xx	+/- 0,10
x°	+/- 1°
Units:mm	

Technical data

Technical data in accordance with UL/cUL

	Use Group	B	C	D
Nominal voltage (V)	300	-	300	
Nominal current (A)	20	-	10	
Connection capacity(AWG)	22-16	-	22-16	

Technical data in accordance with IEC

Rated insulation voltage at pollution degree 2 (V)	
Rated current/conductor cross-section (A/mm²)	
Solid/stranded(mm²)	
Surge voltage category/pollution degree	
Rated insulation voltage(V)	
Rated surge voltage(kV)	

General data

Stripping length(mm)	6-7
Screw thread	M3
Tightening torque(lb-in)	8.8
Insulation Withstanding Voltage	AC 1600 / 1min
Insulation Resistance	1000MΩ or more at DC500V
Using temperature range	-40°C-115°C
Soldering temperature	250±5°C/5s

Materials

Insulation material group	PA 66 I UL94 -V0
Contact	Brass, Tin plated
Screw	Steel, Zn plated

Packing information

Poles	Order Number	SPQ
2	CAZDAB82502x000	120
3	CAZDAB82503x000	189
4	CAZDAB82504x000	84
5	CAZDAB82505x000	75
6	CAZDAB82506x000	84
7	CAZDAB82507x000	60
8	CAZDAB82508x000	48
9	CAZDAB82509x000	42
10	CAZDAB82510x000	42
11	CAZDAB82511x000	39
12	CAZDAB82512x000	39
13	CAZDAB82513x000	39
14	CAZDAB82514x000	24
15	CAZDAB82515x000	24
16	CAZDAB82516x000	21
17	CAZDAB82517x000	21
18	CAZDAB82518x000	24
19	CAZDAB82519x000	24
20	CAZDAB82520x000	24
21	CAZDAB82521x000	20
22	CAZDAB82522x000	20
23	CAZDAB82523x000	20
24	CAZDAB82524x000	20

Ordering code

CAZD AB 825 xx x xxx

① ② ③ ④ ⑤ ⑥

- ① Type
- ② Product style
- ③ Pitch
- ④ Poles (02-24)
- ⑤ Color
- ⑥ Standard 000 or Custom XXX

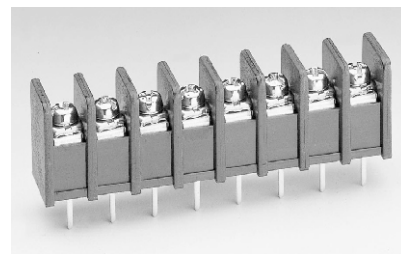
Color

0 Black

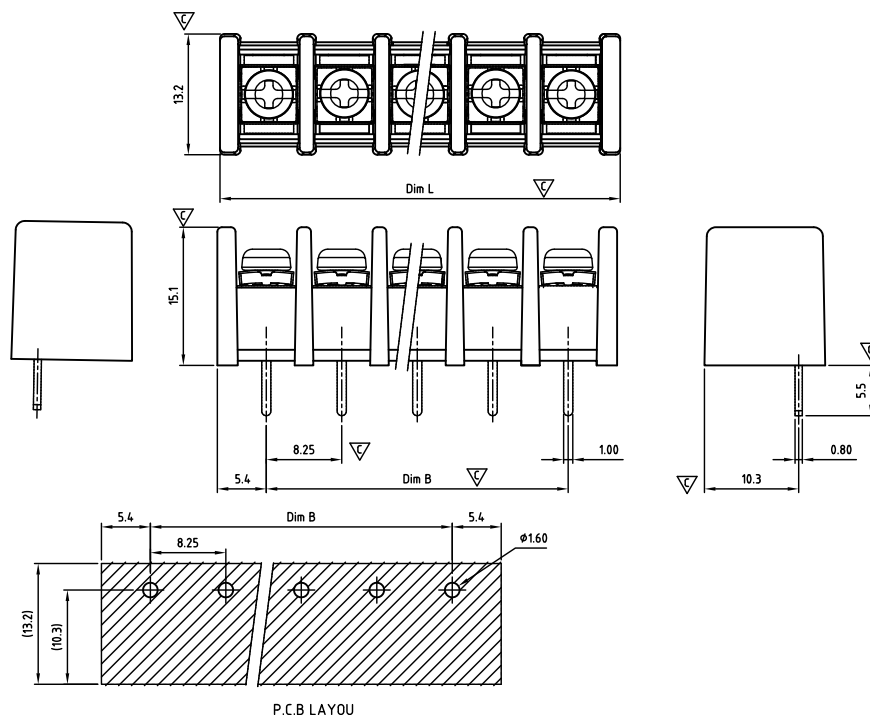
Key Commercial data

Custom tariff number	8536901000
Country of origin	CN (China)

CAZEAA825-SERIES



cAlus E501953



Critical dimension: ▽

Dim.L=(P-1)x8.25+9.25

Dim.B=(P-1)x8.25

P=Number of poles (02-24)

	Dim B	Dim L
0-30mm	+/- 0,15	+/- 0,20
over 30-60mm	+/- 0,20	+/- 0,25
over 60-90mm	+/- 0,25	+/- 0,30
over 90mm	+/- 0,30	+/- 0,40

Tolerance	
x.	+/- 0,50
x.x	+/- 0,30
x.xx	+/- 0,10
x°	+/- 1°

Units:mm

Technical data

Technical data in accordance with UL/CUL

	Use Group	B	C	D
Nominal voltage (V)	300	-	300	
Nominal current (A)	20	-	10	
Connection capacity(AWG)	22-12	-	22-12	

Technical data in accordance with IEC

Rated insulation voltage at pollution degree 2 (V)	
Rated current/conductor cross-section (A/mm ²)	
Solid/stranded(mm ²)	
Surge voltage category/pollution degree	
Rated insulation voltage(V)	
Rated surge voltage(kV)	

General data

Stripping length(mm)	6-7
Screw thread	M3
Tightening torque(lb-in)	8.8
Insulation Withstanding Voltage	AC 1600 / 1min
Insulation Resistance	1000MΩ or more at DC500V
Using temperature range	-40°C-115°C
Soldering temperature	250±5°C/5s

Materials

Insulation material group	PA 66 I UL94 -V0
Contact	Brass, Tin plated
Screw	Steel, Zn plated

Packing information

Poles	Order Number	SPQ
2	CAZEAA82502x000	312
3	CAZEAA82503x000	144
4	CAZEAA82504x000	105
5	CAZEAA82505x000	84
6	CAZEAA82506x000	72
7	CAZEAA82507x000	72
8	CAZEAA82508x000	48
9	CAZEAA82509x000	48
10	CAZEAA82510x000	48
11	CAZEAA82511x000	42
12	CAZEAA82512x000	33
13	CAZEAA82513x000	36
14	CAZEAA82514x000	36
15	CAZEAA82515x000	21
16	CAZEAA82516x000	21
17	CAZEAA82517x000	21
18	CAZEAA82518x000	21
19	CAZEAA82519x000	21
20	CAZEAA82520x000	21
21	CAZEAA82521x000	21
22	CAZEAA82522x000	18
23	CAZEAA82523x000	18
24	CAZEAA82524x000	18

Ordering code

CAZE AA 825 xx x xxx

① ② ③ ④ ⑤ ⑥

- ① Type
- ② Product style
- ③ Pitch
- ④ Poles (02-24)
- ⑤ Color
- ⑥ Standard 000 or Custom XXX

Color

0 Black

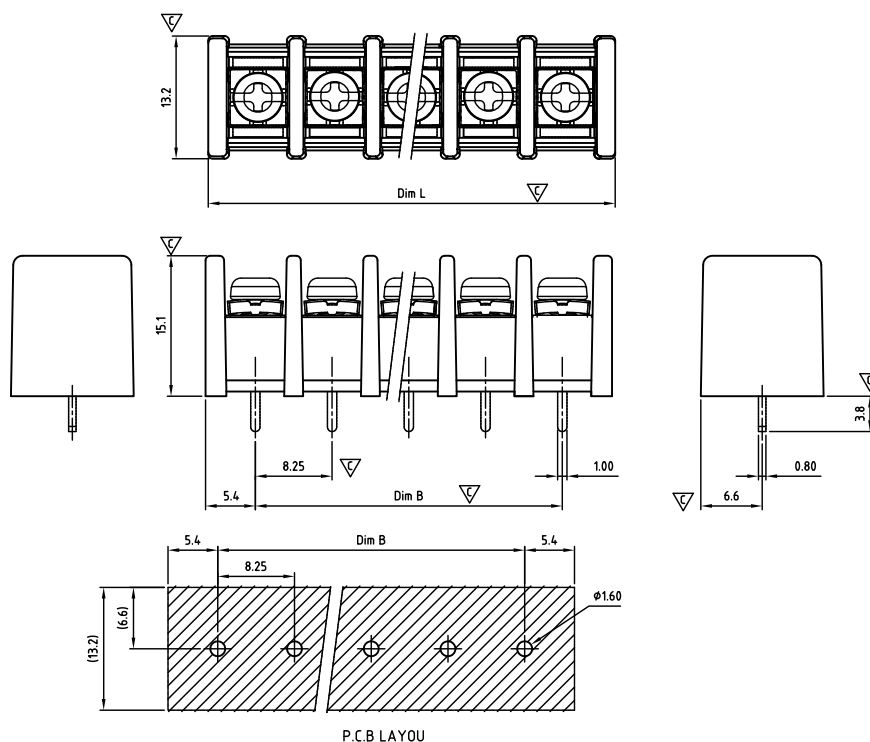
Key Commercial data

Custom tariff number	8536901000
Country of origin	CN (China)



CAZEAB825-SERIES

cAlus E501953



Critical dimension: ∇

Dim.L=(P-1)x8.25+9.25

Dim.B=(P-1)x8.25

P=Number of poles (02-24)

	Dim B	Dim L
0-30mm	+/- 0,15	+/- 0,20
over 30-60mm	+/- 0,20	+/- 0,25
over 60-90mm	+/- 0,25	+/- 0,30
over 90mm	+/- 0,30	+/- 0,40

Tolerance	
x.	+/- 0,50
x.x	+/- 0,30
x.xx	+/- 0,10
x°	+/- 1°
Units:mm	

Technical data

Technical data in accordance with UL/cUL

	Use Group	B	C	D
Nominal voltage (V)	300	-	300	
Nominal current (A)	20	-	10	
Connection capacity(AWG)	22-12	-	22-12	

Technical data in accordance with IEC

Rated insulation voltage at pollution degree 2 (V)	
Rated current/conductor cross-section (A/mm ²)	
Solid/stranded(mm ²)	
Surge voltage category/pollution degree	
Rated insulation voltage(V)	
Rated surge voltage(kV)	

General data

Stripping length(mm)	6-7
Screw thread	M3
Tightening torque(lb-in)	8.8
Insulation Withstanding Voltage	AC 1600 / 1min
Insulation Resistance	1000MΩ or more at DC500V
Using temperature range	-40°C-115°C
Soldering temperature	250±5°C/5s

Materials

Insulation material group	PA 66 I UL94 -V0
Contact	Brass, Tin plated
Screw	Steel, Zn plated

Packing information

Poles	Order Number	SPQ
2	CAZEAB82502x000	312
3	CAZEAB82503x000	96
4	CAZEAB82504x000	84
5	CAZEAB82505x000	72
6	CAZEAB82506x000	63
7	CAZEAB82507x000	48
8	CAZEAB82508x000	48
9	CAZEAB82509x000	42
10	CAZEAB82510x000	42
11	CAZEAB82511x000	36
12	CAZEAB82512x000	36
13	CAZEAB82513x000	21
14	CAZEAB82514x000	21
15	CAZEAB82515x000	21
16	CAZEAB82516x000	21
17	CAZEAB82517x000	21
18	CAZEAB82518x000	21
19	CAZEAB82519x000	21
20	CAZEAB82520x000	21
21	CAZEAB82521x000	21
22	CAZEAB82522x000	18
23	CAZEAB82523x000	18
24	CAZEAB82524x000	18

Ordering code

CAZE AB 825 xx x xxx

① ② ③ ④ ⑤ ⑥

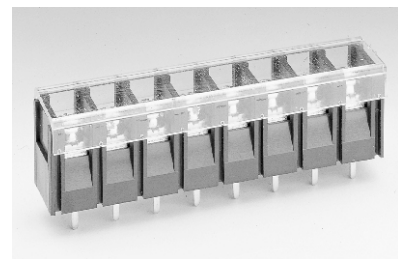
- ① Type
- ② Product style
- ③ Pitch
- ④ Poles (02-24)
- ⑤ Color
- ⑥ Standard 000 or Custom XXX

Color

0 Black

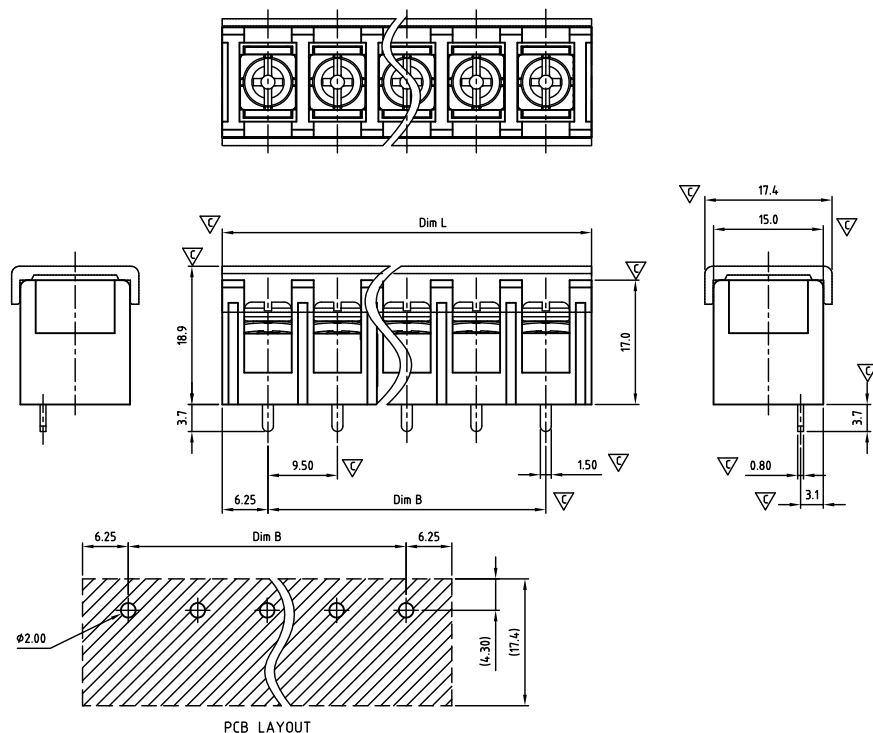
Key Commercial data

Custom tariff number	8536901000
Country of origin	CN (China)



CAZBAA950-SERIES

Pitch 9,50mm



Critical dimension: ▽

Dim.L=(P-1)×9.5+3.0

Dim.B=(P-1)×9.5

P=Number of poles (02-16)

	Dim B	Dim L
0-30mm	+/- 0,15	+/- 0,20
over 30-60mm	+/- 0,20	+/- 0,25
over 60-90mm	+/- 0,25	+/- 0,30
over 90mm	+/- 0,30	+/- 0,40

Tolerance	
x.	+/- 0,50
x.x	+/- 0,30
x.xx	+/- 0,10
x°	+/- 1°
Units:mm	

Technical data

Technical data in accordance with UL/cUL

	Use Group	B	C	D
Nominal voltage (V)	300	-	300	
Nominal current (A)	20	-	10	
Connection capacity(AWG)	22-12	-	22-12	

Technical data in accordance with IEC

Rated insulation voltage at pollution degree 2 (V)	
Rated current/conductor cross-section (A/mm²)	
Solid/stranded(mm²)	
Surge voltage category/pollution degree	
Rated insulation voltage(V)	
Rated surge voltage(kV)	

General data

Stripping length(mm)	7-8
Screw thread	M3
Tightening torque(lb-in)	12
Insulation Withstanding Voltage	AC 1600 / 1min
Insulation Resistance	1000MΩ or more at DC500V
Using temperature range	-40°C-115°C
Soldering temperature	250±5°C/5s

Materials

Insulation material group	PA 66 I UL94 -V0
Contact	Brass, Tin plated
Screw	Steel, Zn plated

Packing information

Poles	Order Number	SPQ
2	CAZBAA95002x000	120
3	CAZBAA95003x000	90
4	CAZBAA95004x000	60
5	CAZBAA95005x000	60
6	CAZBAA95006x000	48
7	CAZBAA95007x000	36
8	CAZBAA95008x000	36
9	CAZBAA95009x000	30
10	CAZBAA95010x000	30
11	CAZBAA95011x000	24
12	CAZBAA95012x000	24
13	CAZBAA95013x000	15
14	CAZBAA95014x000	15
15	CAZBAA95015x000	15
16	CAZBAA95016x000	15

Ordering code

CAZB AA 950 xx x xxx

① ② ③ ④ ⑤ ⑥

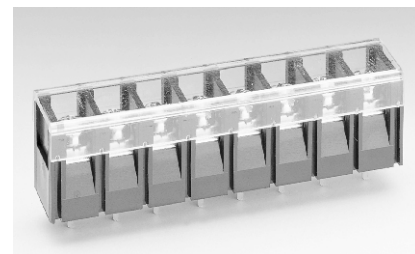
- ① Type
- ② Product style
- ③ Pitch
- ④ Poles (02-16)
- ⑤ Color
- ⑥ Standard 000 or Custom XXX

Color

0 Black

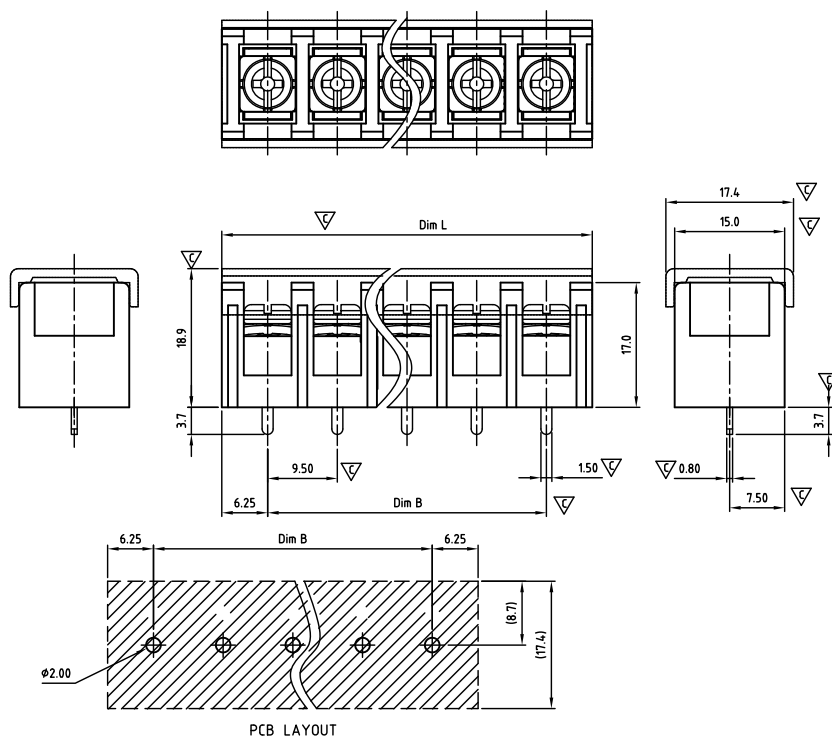
Key Commercial data

Custom tariff number	8536901000
Country of origin	CN (China)



CAZBAB950-SERIES

Pitch 9,50mm



Critical dimension: 17.4mm

Dim.L=Px9.50+3.0

Dim.B=(P-1)x9.50

P=Number of poles (02-16)

	Dim B	Dim L
0-30mm	+/- 0,15	+/- 0,20
over 30-60mm	+/- 0,20	+/- 0,25
over 60-90mm	+/- 0,25	+/- 0,30
over 90mm	+/- 0,30	+/- 0,40

Tolerance	
x.	+/- 0,50
x.x	+/- 0,30
x.xx	+/- 0,10
x°	+/- 1°
Units:mm	

Technical data

Technical data in accordance with UL/cUL

	Use Group	B	C	D
Nominal voltage (V)	300	-	300	
Nominal current (A)	20	-	10	
Connection capacity(AWG)	22-12	-	22-12	

Technical data in accordance with IEC

Rated insulation voltage at pollution degree 2 (V)	
Rated current/conductor cross-section (A/mm ²)	
Solid/stranded(mm ²)	
Surge voltage category/pollution degree	
Rated insulation voltage(V)	
Rated surge voltage(kV)	

General data

Stripping length(mm)	7-8
Screw thread	M3
Tightening torque(lb-in)	12
Insulation Withstanding Voltage	AC 1600 / 1min
Insulation Resistance	1000MΩ or more at DC500V
Using temperature range	-40°C-115°C
Soldering temperature	250±5°C/5s

Materials

Insulation material group	PA 66 I UL94 -V0
Contact	Brass, Tin plated
Screw	Steel, Zn plated

Packing information

Poles	Order Number	SPQ
2	CAZBAB95002x000	120
3	CAZBAB95003x000	90
4	CAZBAB95004x000	60
5	CAZBAB95005x000	60
6	CAZBAB95006x000	48
7	CAZBAB95007x000	36
8	CAZBAB95008x000	36
9	CAZBAB95009x000	30
10	CAZBAB95010x000	30
11	CAZBAB95011x000	24
12	CAZBAB95012x000	24
13	CAZBAB95013x000	15
14	CAZBAB95014x000	15
15	CAZBAB95015x000	15
16	CAZBAB95016x000	15

Ordering code

CAZB AB 950 xx x xxx

① ② ③ ④ ⑤ ⑥

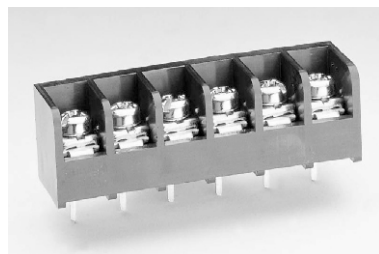
- ① Type
- ② Product style
- ③ Pitch
- ④ Poles (02-16)
- ⑤ Color
- ⑥ Standard 000 or Custom XXX

Color

0 Black

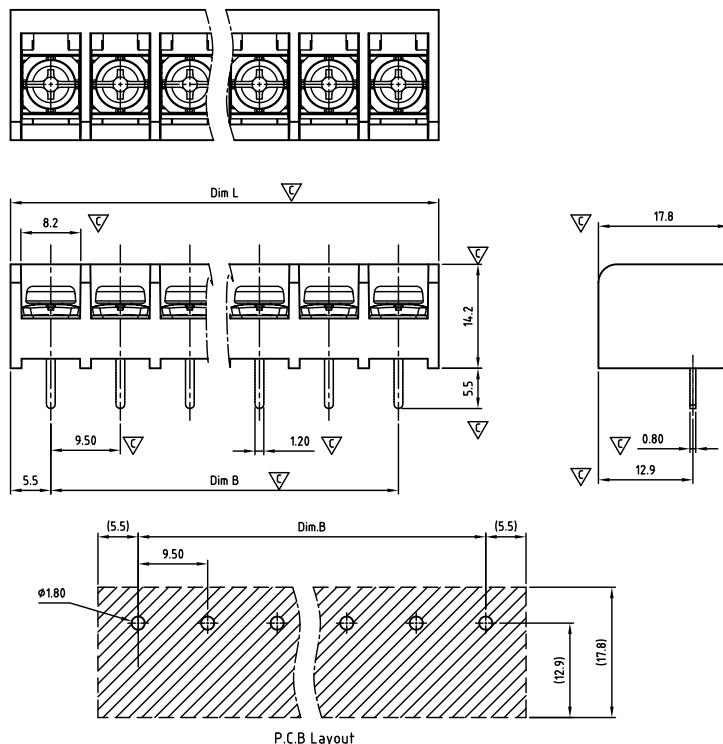
Key Commercial data

Custom tariff number	8536901000
Country of origin	CN (China)



CAZDAA950-SERIES

cAlus E501953



Critical dimension: ∇

Dim.L=(P-1)x9.50+12.20

Dim.B=(P-1)x9.50

P=Number of poles (02-20)

	Dim B	Dim L
0-30mm	+/- 0,15	+/- 0,20
over 30-60mm	+/- 0,20	+/- 0,25
over 60-90mm	+/- 0,25	+/- 0,30
over 90mm	+/- 0,30	+/- 0,40

Tolerance	
x.	+/- 0,50
x.x	+/- 0,30
x.xx	+/- 0,10
x°	+/- 1°
Units:mm	

Technical data

Technical data in accordance with UL/cUL

	Use Group	B	C	D
Nominal voltage (V)	300	-	300	
Nominal current (A)	30	-	10	
Connection capacity(AWG)	22-10	-	22-10	

Technical data in accordance with IEC

Rated insulation voltage at pollution degree 2 (V)	
Rated current/conductor cross-section (A/mm ²)	
Solid/stranded(mm ²)	
Surge voltage category/pollution degree	
Rated insulation voltage(V)	
Rated surge voltage(kV)	

General data

Stripping length(mm)	6-7
Screw thread	M4
Tightening torque(lb-in)	10.5
Insulation Withstanding Voltage	AC 1600 / 1min
Insulation Resistance	1000M Ω or more at DC500V
Using temperature range	-40°C-115°C
Soldering temperature	250±5°C/5s

Materials

Insulation material group	PA 66 I UL94 -V0
Contact	Brass, Tin plated
Screw	Steel, Zn plated

Packing information

Poles	Order Number	SPQ
2	CAZDAA95002x000	160
3	CAZDAA95003x000	144
4	CAZDAA95004x000	115
5	CAZDAA95005x000	96
6	CAZDAA95006x000	78
7	CAZDAA95007x000	60
8	CAZDAA95008x000	48
9	CAZDAA95009x000	42
10	CAZDAA95010x000	42
11	CAZDAA95011x000	39
12	CAZDAA95012x000	39
13	CAZDAA95013x000	39
14	CAZDAA95014x000	24
15	CAZDAA95015x000	24
16	CAZDAA95016x000	21
17	CAZDAA95017x000	21
18	CAZDAA95018x000	21
19	CAZDAA95019x000	21
20	CAZDAA95020x000	21

Ordering code

CAZD AA 950 xx x xxx

① ② ③ ④ ⑤ ⑥

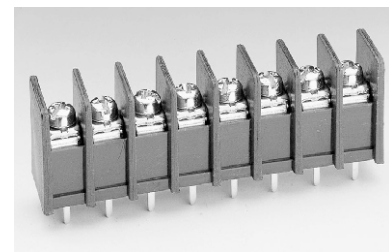
- ① Type
- ② Product style
- ③ Pitch
- ④ Poles (02-20)
- ⑤ Color
- ⑥ Standard 000 or Custom XXX

Color

0 Black

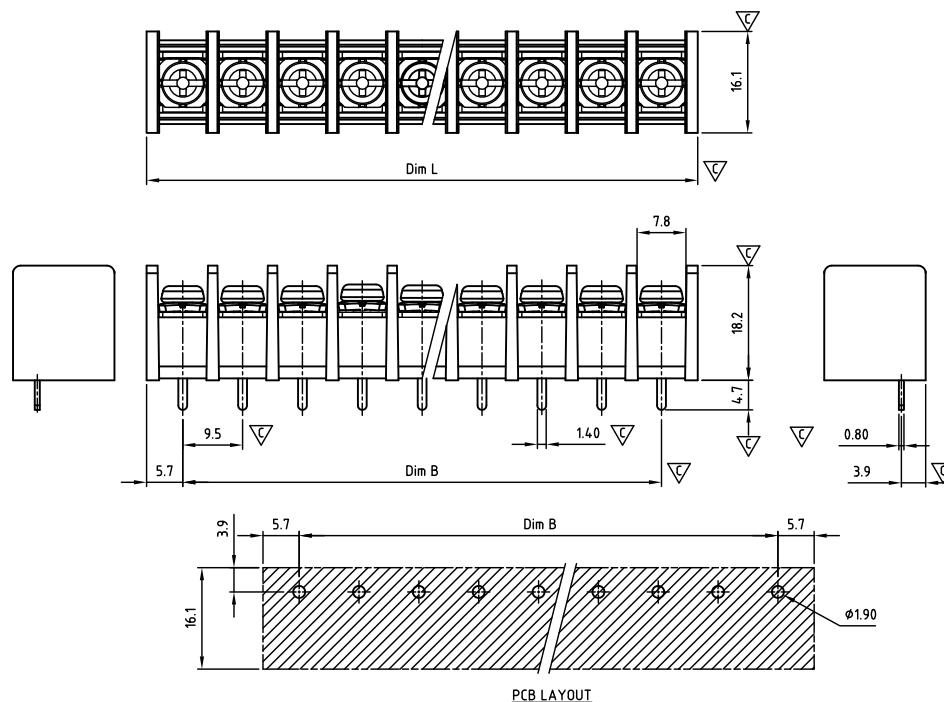
Key Commercial data

Custom tariff number	8536901000
Country of origin	CN (China)



CAZCAA952-SERIES

cAlus E501953



Critical dimension: ∇

Dim.L=(P-1)x9.50+11.6

Dim.B=(P-1)x9.50

P=Number of poles (02-24)

	Dim B	Dim L
0-30mm	+/- 0,15	+/- 0,20
over 30-60mm	+/- 0,20	+/- 0,25
over 60-90mm	+/- 0,25	+/- 0,30
over 90mm	+/- 0,30	+/- 0,40

Tolerance	
x.	+/- 0,50
x.x	+/- 0,30
x.xx	+/- 0,10
x°	+/- 1°
Units:mm	

Technical data

Technical data in accordance with UL/CUL

	Use Group	B	C	D
Nominal voltage (V)	300	-	300	
Nominal current (A)	30	-	10	
Connection capacity(AWG)	22-10	-	22-10	

Technical data in accordance with IEC

Rated insulation voltage at pollution degree 2 (V)	
Rated current/conductor cross-section (A/mm ²)	
Solid/stranded(mm ²)	
Surge voltage category/pollution degree	
Rated insulation voltage(V)	
Rated surge voltage(kV)	

General data

Stripping length(mm)	6-7
Screw thread	M3
Tightening torque(lb-in)	8.8
Insulation Withstanding Voltage	AC 1600 / 1min
Insulation Resistance	1000MΩ or more at DC500V
Using temperature range	-40°C-115°C
Soldering temperature	250±5°C/5s

Materials

Insulation material group	PA 66 I UL94 -V0
Contact	Brass, Tin plated
Screw	Steel, Zn plated

Packing information

Poles	Order Number	SPQ
2	CAZCAA95202x000	150
3	CAZCAA95203x000	108
4	CAZCAA95204x000	90
5	CAZCAA95205x000	72
6	CAZCAA95206x000	54
7	CAZCAA95207x000	35
8	CAZCAA95208x000	35
9	CAZCAA95209x000	35
10	CAZCAA95210x000	35
11	CAZCAA95211x000	30
12	CAZCAA95212x000	30
13	CAZCAA95213x000	15
14	CAZCAA95214x000	15
15	CAZCAA95215x000	15
16	CAZCAA95216x000	15
17	CAZCAA95217x000	15
18	CAZCAA95218x000	15
19	CAZCAA95219x000	15
20	CAZCAA95220x000	15
21	CAZCAA95221x000	10
22	CAZCAA95222x000	10
23	CAZCAA95223x000	10
24	CAZCAA95224x000	10

Ordering code

CAZC AA 952 xx x xxx

① ② ③ ④ ⑤ ⑥

- ① Type
- ② Product style
- ③ Pitch
- ④ Poles (02-24)
- ⑤ Color
- ⑥ Standard 000 or Custom XXX

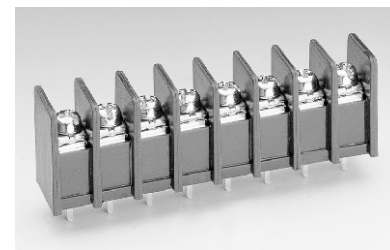
Color

0 Black

Key Commercial data

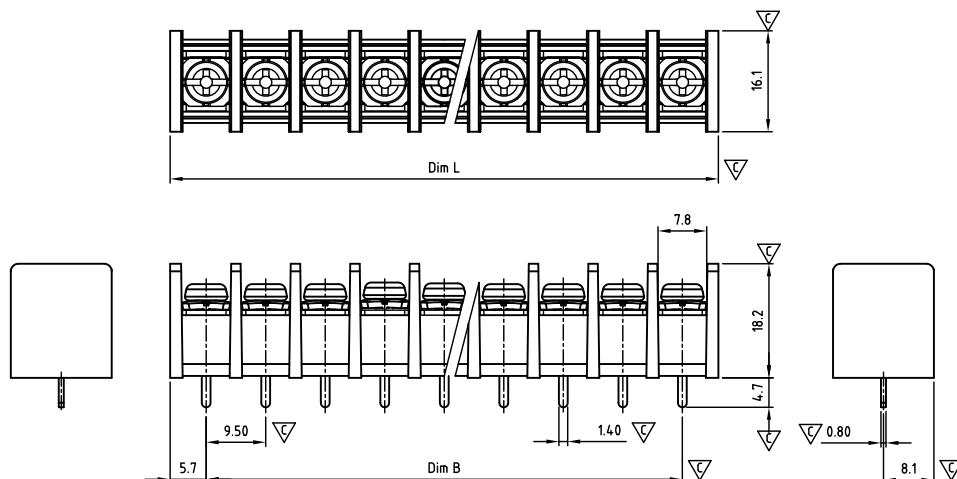
Custom tariff number	8536901000
Country of origin	CN (China)

CAZCAB952-SERIES



Pitch 9,50mm

cULus E501953



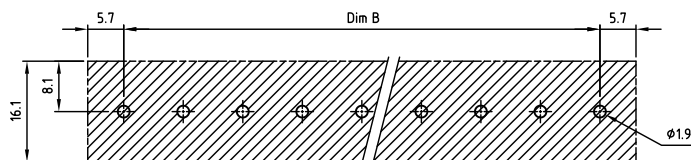
Critical dimension: ∇

Dim.L=(P-1)x9.50+11.6

Dim.B=(P-1)x9.50

P=Number of poles (02-24)

	Dim B	Dim L
0-30mm	+/- 0,15	+/- 0,20
over 30-60mm	+/- 0,20	+/- 0,25
over 60-90mm	+/- 0,25	+/- 0,30
over 90mm	+/- 0,30	+/- 0,40



PCB LAYOUT

Tolerance	
x.	+/- 0,50
x.x	+/- 0,30
x.xx	+/- 0,10
x°	+/- 1°
Units:mm	

Technical data

Technical data in accordance with UL/cUL

	Use Group	B	C	D
Nominal voltage (V)	300	-	300	
Nominal current (A)	30	-	10	
Connection capacity(AWG)	22-10	-	22-10	

Technical data in accordance with IEC

Rated insulation voltage at pollution degree 2 (V)	
Rated current/conductor cross-section (A/mm ²)	
Solid/stranded(mm ²)	
Surge voltage category/pollution degree	
Rated insulation voltage(V)	
Rated surge voltage(kV)	

General data

Stripping length(mm)	6-7
Screw thread	M3
Tightening torque(lb-in)	8.8
Insulation Withstanding Voltage	AC 1600 / 1min
Insulation Resistance	1000MΩ or more at DC500V
Using temperature range	-40°C-115°C
Soldering temperature	250±5°C/5s

Materials

Insulation material group	PA 66 I UL94 -V0
Contact	Brass, Tin plated
Screw	Steel, Zn plated

Packing information

Poles	Order Number	SPQ
2	CAZCAB95202x000	150
3	CAZCAB95203x000	108
4	CAZCAB95204x000	90
5	CAZCAB95205x000	72
6	CAZCAB95206x000	54
7	CAZCAB95207x000	35
8	CAZCAB95208x000	35
9	CAZCAB95209x000	35
10	CAZCAB95210x000	35
11	CAZCAB95211x000	30
12	CAZCAB95212x000	30
13	CAZCAB95213x000	15
14	CAZCAB95214x000	15
15	CAZCAB95215x000	15
16	CAZCAB95216x000	15
17	CAZCAB95217x000	15
18	CAZCAB95218x000	15
19	CAZCAB95219x000	15
20	CAZCAB95220x000	15
21	CAZCAB95221x000	10
22	CAZCAB95222x000	10
23	CAZCAB95223x000	10
24	CAZCAB95224x000	10

Ordering code

CAZC AB 952 xx x xxx

① ② ③ ④ ⑤ ⑥

- ① Type
- ② Product style
- ③ Pitch
- ④ Poles (02-24)
- ⑤ Color
- ⑥ Standard 000 or Custom XXX

Color

0 Black

Key Commercial data

Custom tariff number	8536901000
Country of origin	CN (China)

AUTOMATED ASSEMBLY

According to the different characteristics of products, we have divided our assembly production line into two:

automated assembly line and manual assembly line. Our professional engineers not only have the ability to design the labor power into the automated assembly system, but also are able to develop and improve the automated assembly machines, as well as defective product detecting system.

Hence we can ensure the quality of product also improve the productivity. Recent years, in order to reduce the production costs and improve market competitiveness, CABCON has reduced the cost in manual production and focused

on the development of automation equipment, to ensure product quality and production capacity. Production efficiency will lead the delivery time become more accurate.

INJECTION MOLDING

Right now CABCON has many sets of high precision injecting machine. All the machines are able to process a variety of high precision injecting products, in order to meet all kinds of components and OEM / ODM customer's needs. Also our factory is using concentrated dry feeding system and automatic suction machine, so that the machines can supply material automatically. CABCON only needs one person to run this production line, which is the best part of our precision injecting machines.

SCREW AND METAL CAGE

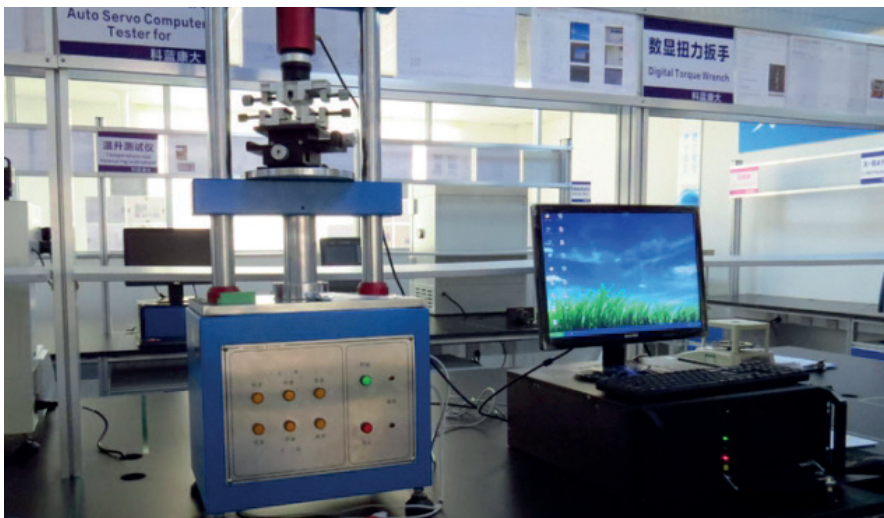
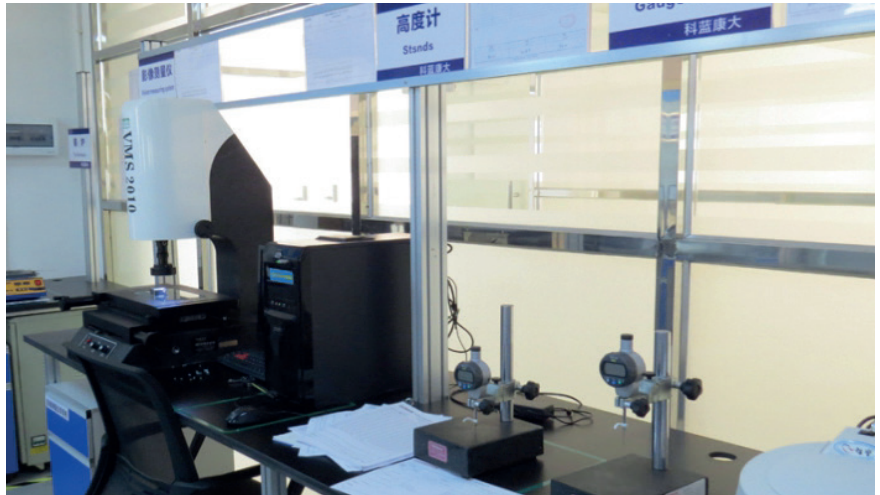
CABCON has all kinds of precision lathes, drilling, tapping machines. Also our production line has a number of advanced and efficient CCD automatic detecting systems.



TESTING LABORATORY

ISO/IEC17025 standard is applied in CABCON's laboratory. Our lab has included the testing equipments of electrical, environmental, mechanical and vibration.

All equipments are comply with UL1059 UL486E IEC60947 IEC60998 IEC61984 GB13140 to monitor the production process, hence ensure the quality and stability of CABCON's product.



COMPANY ABILITY



ISO-9001

CREATING VALUE



Cabcon A/S · Stamholmen 193A · DK-2650 Hvidovre · Denmark · Tel. +45 38 76 03 15 · www.cabcon.dk

Cabcon A/S · Trollåsveien 4 · 1414 Trollåsen · Norway · Tel. +47 93 200 204 · www.cabcon.dk

Cabcon A/S · Stora Åvägen 21 · 436 34 Askim · Sweden · Tel. +46 735 01 33 24 · www.cabcon.dk

Cabcon Asia · Unit 8, 28/F, Cable TV Tower · Hoi Shing Road, Tsuen Wan · Hong Kong