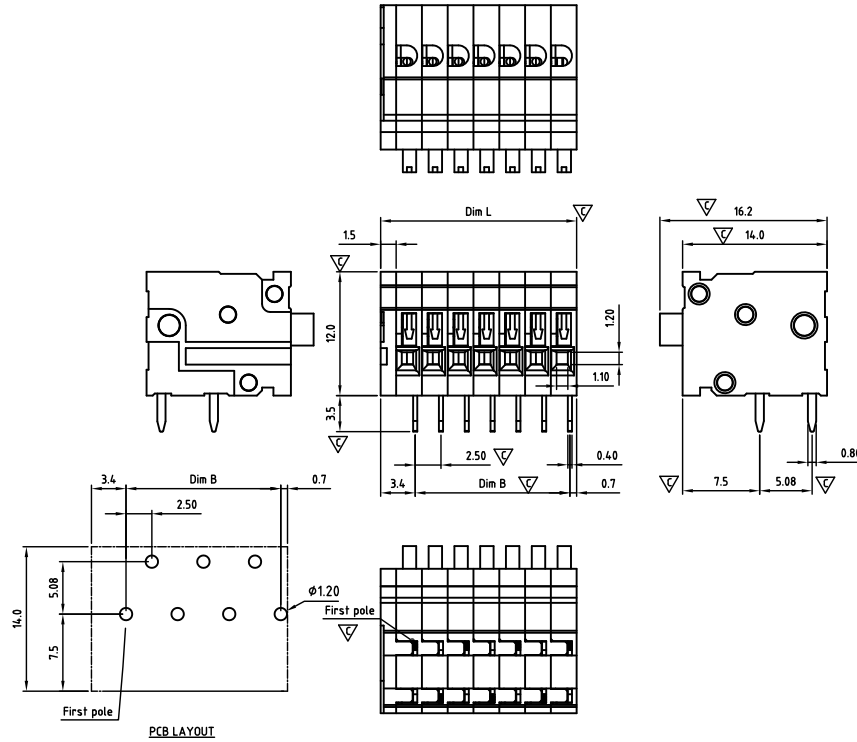




CASDHZ250-SERIES

cULus E501953



Critical dimension: ∇

Dim.L=Px2.5+1.5		
Dim.B=(P-1)x2.5		
P=Number of poles (01-24)		
	Dim B	Dim L
0-30mm	+/- 0,15	+/- 0,20
over 30-60mm	+/- 0,20	+/- 0,25
over 60-90mm	+/- 0,25	+/- 0,30
over 90mm	+/- 0,30	+/- 0,40

Tolerance	
x.	+/- 0,50
x.x	+/- 0,30
x.xx	+/- 0,10
x°	+/- 1°
Units:mm	

Technical data

Technical data in accordance with UL/CUL

	Use Group	B	C	D
Nominal voltage (V)	150	-	-	-
Nominal current (A)	6	-	-	-
Connection capacity(AWG)	26-18	-	-	-

Technical data in accordance with IEC

Rated insulation voltage at pollution degree 2 (V)	160		
Rated current/conductor cross-section (A/mm ²)	4 / 0.5		
Solid/stranded(mm ²)	0.14-0.5 / 0.14-0.5		
Surge voltage category/pollution degree	III / 3	III / 2	II / 2
Rated insulation voltage(V)	63	160	320
Rated surge voltage(kV)	2.5	2.5	2.5

General data

Stripping length(mm)	10-11
Borehole diameter/pin dimensions(mm)	1.2/0.4*0.8

Materials

Insulation material group	PA 66 I
Inflammability class acc.To UI94	V0
Contact	Brass, Sn plated
Wire guard	Stainless steel

Packing information

Poles	Order Number	SPQ
2	CASDHZ25002x000	500
3	CASDHZ25003x000	450
4	CASDHZ25004x000	400
5	CASDHZ25005x000	330
6	CASDHZ25006x000	290
7	CASDHZ25007x000	240
8	CASDHZ25008x000	215
9	CASDHZ25009x000	190
10	CASDHZ25010x000	165
11	CASDHZ25011x000	165
12	CASDHZ25012x000	140
13	CASDHZ25013x000	120
14	CASDHZ25014x000	120
15	CASDHZ25015x000	120
16	CASDHZ25016x000	95
17	CASDHZ25017x000	95
18	CASDHZ25018x000	95
19	CASDHZ25019x000	95
20	CASDHZ25020x000	70
21	CASDHZ25021x000	70
22	CASDHZ25022x000	70
23	CASDHZ25023x000	70
24	CASDHZ25024x000	70

Ordering code

CASDHZ 250 xx x xxx
① ② ③ ④ ⑤ ⑥

- ① Type
- ② Product style
- ③ Pitch
- ④ Poles (01-24)
- ⑤ Color
- ⑥ Standard 000 or Custom XXX

Color

0 Black	5 Green
1 Brown	6 Blue
2 Red	G Pale grey
3 Orange	8 Dark grey
4 Yellow	9 White

Key Commercial data

Custom tariff number	8536901000
Country of origin	CN (China)



Pitch 2,50mm