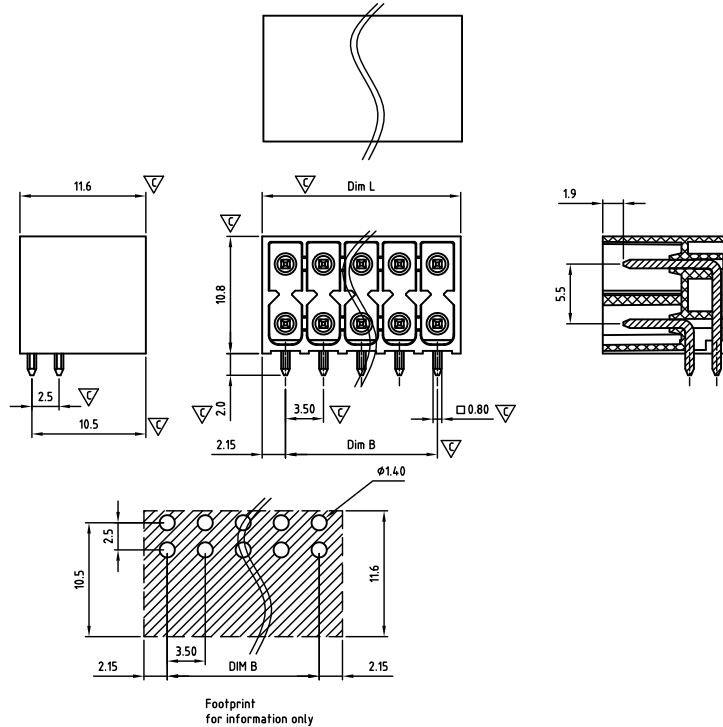




CAHGBH350-SERIES

cULus E501953



Critical dimension: ▽

Dim.L=(1/2P-1)x3.5+4.3

Dim.B=(1/2P-1)x3.5

P=Number of poles (04-48)

	Dim B	Dim L
0-30mm	+/- 0,15	+/- 0,20
over 30-60mm	+/- 0,20	+/- 0,25
over 60-90mm	+/- 0,25	+/- 0,30
over 90mm	+/- 0,30	+/- 0,40

Pitch 3,50mm

Technical data

Technical data in accordance with UL/CUL

	Use Group	B	C	D
Nominal voltage (V)		150	50	-
Nominal current (A)		8	8	-
Connection capacity (AWG)		-	-	-

Technical data in accordance with IEC

Rated insulation voltage at pollution degree 2 (V)		160		
Rated current/conductor cross-section (A/mm ²)		8 / -		
Solid/stranded(mm ²)		-		
Surge voltage category/pollution degree	III / 3	III / 2	II / 2	
Rated insulation voltage(V)	160	160	250	
Rated surge voltage(kV)	1.5	2.5	2.5	

General data

Flange nut thread		-
Flange nut tightening torque(Nm)		-
Insulation Withstanding Voltage	AC 1600 / 1min	
Insulation Resistance	1000MΩ or more at DC500V	
Using temperature range	-40°C-130°C	
Soldering temperature	260±5°C/10s	

Materials

Insulation material group	LCP I UL94 -V0
PIN	Copper, Tin plated
Flange nut	-
Borehole diameter/pin dimensions(mm)	1.4/0.8*0.8

Packing information

Poles	Order Number	SPQ
2*2	CAHGBH35004x000	350
2*3	CAHGBH35006x000	220
2*4	CAHGBH35008x000	160
2*5	CAHGBH35010x000	130
2*6	CAHGBH35012x000	135
2*7	CAHGBH35014x000	120
2*8	CAHGBH35016x000	105
2*9	CAHGBH35018x000	90
2*10	CAHGBH35020x000	75
2*11	CAHGBH35022x000	75
2*12	CAHGBH35024x000	60
2*13	CAHGBH35026x000	60
2*14	CAHGBH35028x000	60
2*15	CAHGBH35030x000	45
2*16	CAHGBH35032x000	45
2*17	CAHGBH35034x000	45
2*18	CAHGBH35036x000	45
2*19	CAHGBH35038x000	45
2*20	CAHGBH35040x000	30
2*21	CAHGBH35042x000	30
2*22	CAHGBH35044x000	30
2*23	CAHGBH35046x000	30
2*24	CAHGBH35048x000	30

Ordering code

CAHGBH 350 xx x xxx

① ② ③ ④ ⑤ ⑥

- ① Type
- ② Product style
- ③ Pitch
- ④ Poles (04-48)
- ⑤ Color
- ⑥ Standard 000 or Custom XXX

Color

0 Black	5 Green
1 Brown	6 Blue
2 Red	G Pale grey
3 Orange	8 Dark grey
4 Yellow	9 White

Key Commercial data

Custom tariff number	8536901000
Country of origin	CN (China)

Mating with headers

CAPDSD350 Series

