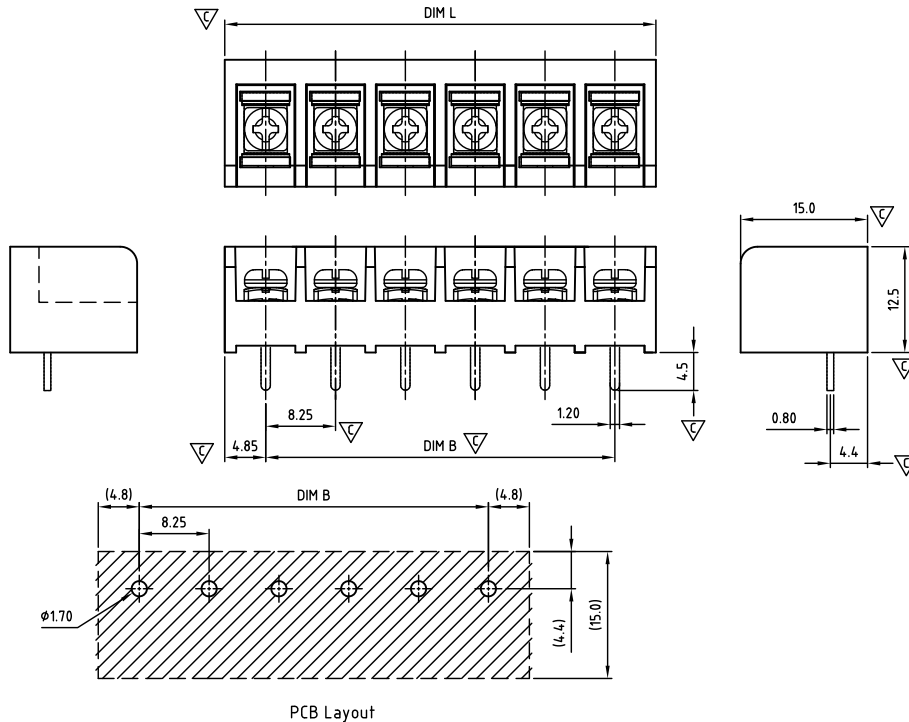


**CAZDAA825-SERIES**

**cULus** E501953



Critical dimension: ▽

Dim.L=(P-1)x8.25+9.70

Dim.B=(P-1)x8.25

P=Number of poles (02-24)

	Dim B	Dim L
0-30mm	+/- 0,15	+/- 0,20
over 30-60mm	+/- 0,20	+/- 0,25
over 60-90mm	+/- 0,25	+/- 0,30
over 90mm	+/- 0,30	+/- 0,40

Tolerance	
x.	+/- 0,50
x.x	+/- 0,30
x.xx	+/- 0,10
x°	+/- 1°

Units:mm

PCB Layout

**Technical data**

Technical data in accordance with UL/CUL

	Use Group	B	C	D
Nominal voltage (V)		300	-	300
Nominal current (A)		20	-	10
Connection capacity(AWG)		22-16	-	22-16

Technical data in accordance with IEC

Rated insulation voltage at pollution degree 2 (V)	
Rated current/conductor cross-section (A/mm <sup>2</sup> )	
Solid/stranded(mm <sup>2</sup> )	
Surge voltage category/pollution degree	
Rated insulation voltage(V)	
Rated surge voltage(kV)	

General data

Stripping length(mm)	6-7
Screw thread	M3
Tightening torque(lb-in)	8.8
Insulation Withstanding Voltage	AC 1600 / 1min
Insulation Resistance	1000MΩ or more at DC500V
Using temperature range	-40°C-115°C
Soldering temperature	250±5°C/5s

Materials

Insulation material group	PA 66 I UL94 -V0
Contact	Brass, Tin plated
Screw	Steel, Zn plated

**Packing information**

Poles	Order Number	SPQ
2	CAZDAA82502x000	270
3	CAZDAA82503x000	189
4	CAZDAA82504x000	100
5	CAZDAA82505x000	95
6	CAZDAA82506x000	84
7	CAZDAA82507x000	72
8	CAZDAA82508x000	60
9	CAZDAA82509x000	60
10	CAZDAA82510x000	60
11	CAZDAA82511x000	45
12	CAZDAA82512x000	45
13	CAZDAA82513x000	45
14	CAZDAA82514x000	45
15	CAZDAA82515x000	24
16	CAZDAA82516x000	24
17	CAZDAA82517x000	24
18	CAZDAA82518x000	24
19	CAZDAA82519x000	24
20	CAZDAA82520x000	24
21	CAZDAA82521x000	20
22	CAZDAA82522x000	20
23	CAZDAA82523x000	20
24	CAZDAA82524x000	20

**Ordering code**

CAZD AA 825 xx x xxx

① ② ③ ④ ⑤ ⑥

- ① Type
- ② Product style
- ③ Pitch
- ④ Poles (02-24)
- ⑤ Color
- ⑥ Standard 000 or Custom XXX

Color

0 Black

**Key Commercial data**

Custom tariff number	8536901000
Country of origin	CN (China)

