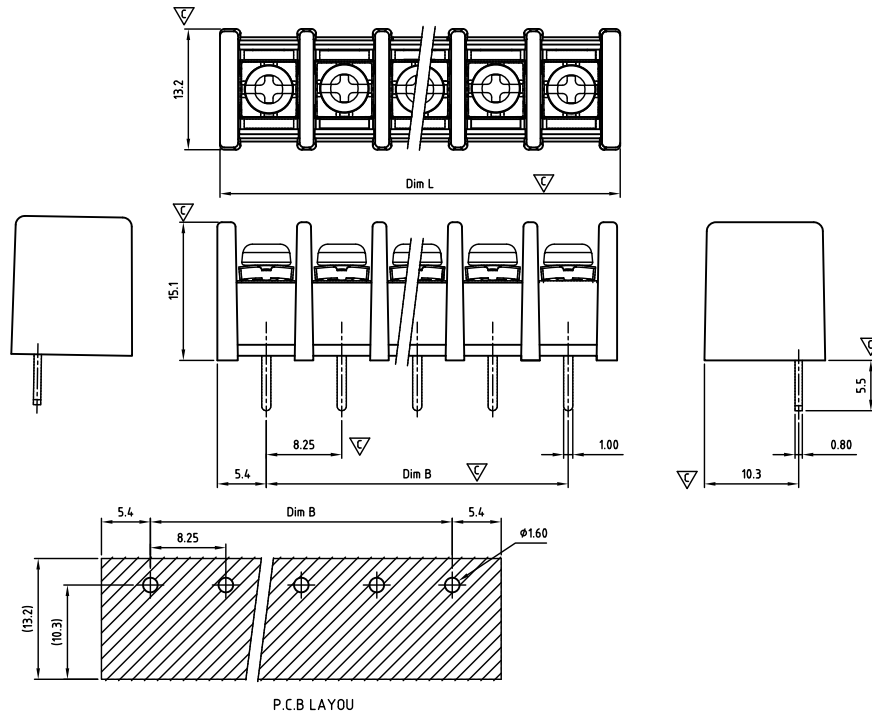


CAZEAA825-SERIES

cRus E501953



Critical dimension: ▽

Dim.L=(P-1)×8.25+9.25

Dim.B=(P-1)×8.25

P=Number of poles (02-24)

	Dim B	Dim L
0-30mm	+/- 0,15	+/- 0,20
over 30-60mm	+/- 0,20	+/- 0,25
over 60-90mm	+/- 0,25	+/- 0,30
over 90mm	+/- 0,30	+/- 0,40

Tolerance	
x.	+/- 0,50
x.x	+/- 0,30
x.xx	+/- 0,10
x°	+/- 1°
Units:mm	

Technical data

Technical data in accordance with UL/CUL

	Use Group	B	C	D
Nominal voltage (V)		300	-	300
Nominal current (A)		20	-	10
Connection capacity(AWG)		22-12	-	22-12

Technical data in accordance with IEC

Rated insulation voltage at pollution degree 2 (V)	
Rated current/conductor cross-section (A/mm ²)	
Solid/stranded(mm ²)	
Surge voltage category/pollution degree	
Rated insulation voltage(V)	
Rated surge voltage(kV)	

General data

Stripping length(mm)	6-7
Screw thread	M3
Tightening torque(lb-in)	8.8
Insulation Withstanding Voltage	AC 1600 / 1min
Insulation Resistance	1000MΩ or more at DC500V
Using temperature range	-40°C-115°C
Soldering temperature	250±5°C/5s

Materials

Insulation material group	PA 66 I UL94 -V0
Contact	Brass, Tin plated
Screw	Steel, Zn plated

Packing information

Poles	Order Number	SPQ
2	CAZEAA82502x000	312
3	CAZEAA82503x000	144
4	CAZEAA82504x000	105
5	CAZEAA82505x000	84
6	CAZEAA82506x000	72
7	CAZEAA82507x000	72
8	CAZEAA82508x000	48
9	CAZEAA82509x000	48
10	CAZEAA82510x000	48
11	CAZEAA82511x000	42
12	CAZEAA82512x000	33
13	CAZEAA82513x000	36
14	CAZEAA82514x000	36
15	CAZEAA82515x000	21
16	CAZEAA82516x000	21
17	CAZEAA82517x000	21
18	CAZEAA82518x000	21
19	CAZEAA82519x000	21
20	CAZEAA82520x000	21
21	CAZEAA82521x000	21
22	CAZEAA82522x000	18
23	CAZEAA82523x000	18
24	CAZEAA82524x000	18

Ordering code

CAZE AA 825 xx x xxx

① ② ③ ④ ⑤ ⑥

- ① Type
- ② Product style
- ③ Pitch
- ④ Poles (02-24)
- ⑤ Color
- ⑥ Standard 000 or Custom XXX

Color

0 Black

Key Commercial data

Custom tariff number	8536901000
Country of origin	CN (China)

