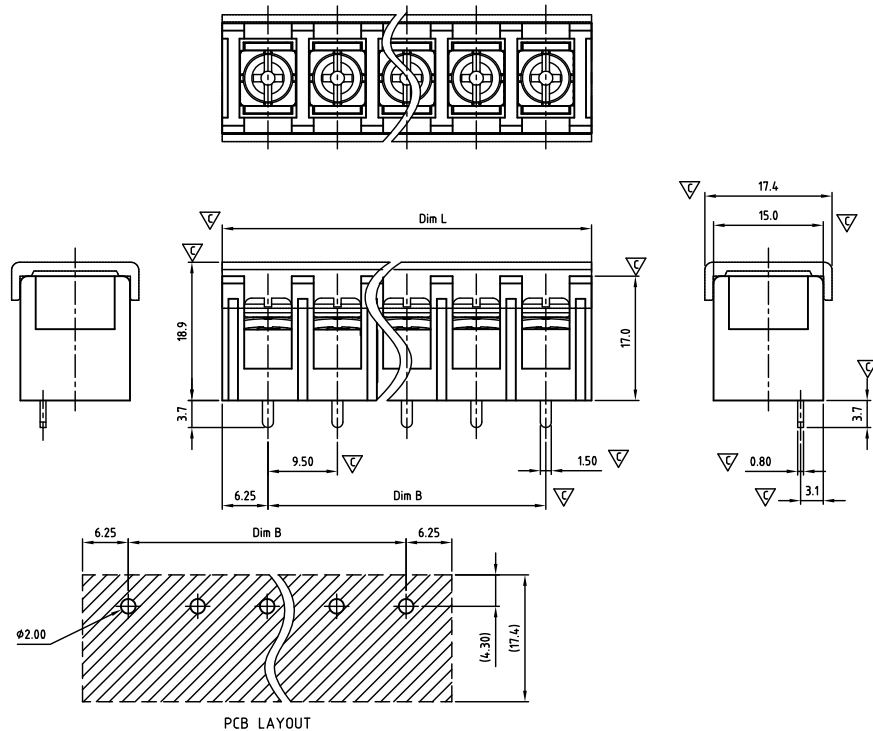


**CAZBAA950-SERIES**

Pitch 9,50mm



Critical dimension: ▽

Dim.L=(P-1)×9.5+3.0		
Dim.B=(P-1)×9.5		
P=Number of poles (02-16)		
	Dim B	Dim L
0-30mm	+/- 0,15	+/- 0,20
over 30-60mm	+/- 0,20	+/- 0,25
over 60-90mm	+/- 0,25	+/- 0,30
over 90mm	+/- 0,30	+/- 0,40

Tolerance	
x.	+/- 0,50
x.x	+/- 0,30
x.xx	+/- 0,10
x°	+/- 1°
Units:mm	

**Technical data**

Technical data in accordance with UL/CUL

	Use Group	B	C	D
Nominal voltage (V)		300	-	300
Nominal current (A)		20	-	10
Connection capacity (AWG)		22-12	-	22-12

Technical data in accordance with IEC

Rated insulation voltage at pollution degree 2 (V)	
Rated current/conductor cross-section (A/mm <sup>2</sup> )	
Solid/stranded(mm <sup>2</sup> )	
Surge voltage category/pollution degree	
Rated insulation voltage(V)	
Rated surge voltage(kV)	

General data

Stripping length(mm)	7-8
Screw thread	M3
Tightening torque(lb-in)	12
Insulation Withstanding Voltage	AC 1600 / 1min
Insulation Resistance	1000MΩ or more at DC500V
Using temperature range	-40°C-115°C
Soldering temperature	250±5°C/5s

Materials

Insulation material group	PA 66 I UL94 -V0
Contact	Brass, Tin plated
Screw	Steel, Zn plated

**Packing information**

Poles	Order Number	SPQ
2	CAZBAA95002x000	120
3	CAZBAA95003x000	90
4	CAZBAA95004x000	60
5	CAZBAA95005x000	60
6	CAZBAA95006x000	48
7	CAZBAA95007x000	36
8	CAZBAA95008x000	36
9	CAZBAA95009x000	30
10	CAZBAA95010x000	30
11	CAZBAA95011x000	24
12	CAZBAA95012x000	24
13	CAZBAA95013x000	15
14	CAZBAA95014x000	15
15	CAZBAA95015x000	15
16	CAZBAA95016x000	15

**Ordering code**

**CAZB AA 950 xx x xxx**

① ② ③ ④ ⑤ ⑥

- ① Type
- ② Product style
- ③ Pitch
- ④ Poles (02-16)
- ⑤ Color
- ⑥ Standard 000 or Custom XXX

Color

0 Black

**Key Commercial data**

Custom tariff number	8536901000
Country of origin	CN (China)

