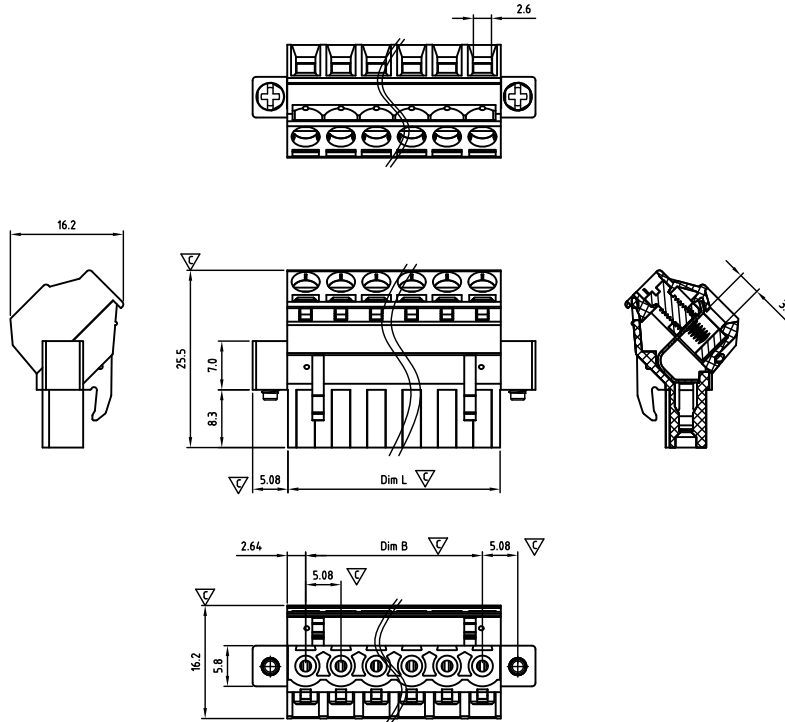




CAMEFO508-SERIES

cULus E501953



Critical dimension: ▽

Dim.L=Px5.08		
Dim.B=(P-1)x5.08		
P=Number of poles (02-24)		
	Dim B	Dim L
0-30mm	+/- 0,15	+/- 0,20
over 30-60mm	+/- 0,20	+/- 0,25
over 60-90mm	+/- 0,25	+/- 0,30
over 90mm	+/- 0,30	+/- 0,40

Tolerance	
x.	+/- 0,50
x.x	+/- 0,30
x.xx	+/- 0,10
x°	+/-1°
	Units:mm

Technical data

Technical data in accordance with UL/CUL

	Use Group	B	C	D
Nominal voltage (V)		300	-	300
Nominal current (A)		15	-	10
Connection capacity(AWG)		30-12	-	30-12

Technical data in accordance with IEC

Rated insulation voltage at pollution degree 2 (V)		320		
Rated current/conductor cross-section (A/mm ²)		12 / 2.5		
Solid/stranded(mm ²)		0.2-2.5 / 0.25-2.5		
Surge voltage category/pollution degree	III / 3	III / 2	II / 2	
Rated insulation voltage(V)	250	320	630	
Rated surge voltage(kV)	4	4	4	

General data

Stripping length(mm)		7-8
Screw thread		M3
Tightening torque(Nm)		0.5-0.6
Insulation Withstanding Voltage		AC1600V / 1min
Insulation Resistance		1000MΩ or more at DC500V
Using temperature range		-40°C-115°C

Materials

Insulation material group		PA 66 I UL94 -V0
Wire guard		PhBz, Tin plated
Cage		Brass, Zn plated
Screw		Steel, Zn plated

Packing information

Poles	Order Number	SPQ
2	CAMEFO50802x000	200
3	CAMEFO50803x000	150
4	CAMEFO50804x000	100
5	CAMEFO50805x000	70
6	CAMEFO50806x000	70
7	CAMEFO50807x000	60
8	CAMEFO50808x000	55
9	CAMEFO50809x000	45
10	CAMEFO50810x000	45
11	CAMEFO50811x000	40
12	CAMEFO50812x000	35
13	CAMEFO50813x000	35
14	CAMEFO50814x000	30
15	CAMEFO50815x000	30
16	CAMEFO50816x000	30
17	CAMEFO50817x000	30
18	CAMEFO50818x000	20
19	CAMEFO50819x000	20
20	CAMEFO50820x000	20
21	CAMEFO50821x000	20
22	CAMEFO50822x000	20
23	CAMEFO50823x000	15
24	CAMEFO50824x000	15

Ordering code

CAME FO 508 xx x xxx
① ② ③ ④ ⑤ ⑥

- ① Type
- ② Product style
- ③ Pitch
- ④ Poles (02-24)
- ⑤ Color
- ⑥ Standard 000 or Custom XXX

Color

0 Black	5 Green
1 Brown	6 Blue
2 Red	G Pale grey
3 Orange	8 Dark grey
4 Yellow	9 White

Key Commercial data

Custom tariff number	8536901000
Country of origin	CN (China)

Mating with headers

CAHACH508 Series



CAHACV508 Series



CAHAFH508 Series



CAHAFV508 Series



CAHECV508 Series

