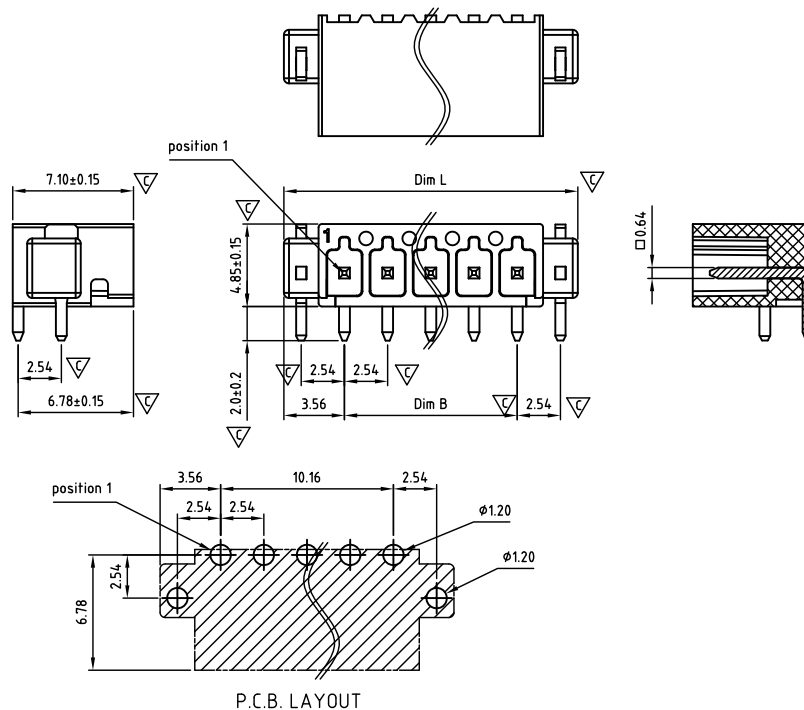


CAHCCH254-SERIES

Pitch 2,54mm



Critical dimension: ▽

Dim.L=(P-1)x2.54+7.12

Dim.B=(P-1)x2.54

P=Number of poles (02-24)

	Dim B	Dim L
0-30mm	+/- 0,15	+/- 0,20
over 30-60mm	+/- 0,20	+/- 0,25
over 60-90mm	+/- 0,25	+/- 0,30
over 90mm	+/- 0,30	+/- 0,40

Tolerance	
x.	+/- 0,50
x.x	+/- 0,30
x.xx	+/- 0,10
x°	+/- 1°
Units:mm	

Technical data

Technical data in accordance with UL/CUL

	Use Group	B	C	D
Nominal voltage (V)		150	50	-
Nominal current (A)		6	6	-
Connection capacity(AWG)		-	-	-

Technical data in accordance with IEC

Rated insulation voltage at pollution degree 2 (V)		160		
Rated current/conductor cross-section (A/mm ²)		6 / -		
Solid/stranded(mm ²)		-		
Surge voltage category/pollution degree	III / 3	III / 2	II / 2	
Rated insulation voltage(V)	32	160	160	
Rated surge voltage(kV)	2.5	2.5	2.5	

General data

Flange nut thread		-
Flange nut tightening torque(Nm)		-
Insulation Withstanding Voltage	AC 1300 / 1min	
Insulation Resistance	1000MΩ or more at DC500V	
Using temperature range	-40°C-130°C	
Soldering temperature	260±10°C/10s	

Materials

Insulation material group	LCP I UL94 -V0
PIN	Copper, Tin plated
Flange PIN	Brass, Tin plated
Borehole diameter/pin dimensions(mm)	1.2/0.64*0.64

Packing information

Poles	Order Number	SPQ
2	CAHCCH25402x000	250
3	CAHCCH25403x000	250
4	CAHCCH25404x000	250
5	CAHCCH25405x000	250
6	CAHCCH25406x000	250
7	CAHCCH25407x000	250
8	CAHCCH25408x000	250
9	CAHCCH25409x000	250
10	CAHCCH25410x000	250
11	CAHCCH25411x000	250
12	CAHCCH25412x000	250
13	CAHCCH25413x000	250
14	CAHCCH25414x000	250
15	CAHCCH25415x000	250
16	CAHCCH25416x000	250
17	CAHCCH25417x000	250
18	CAHCCH25418x000	250
19	CAHCCH25419x000	250
20	CAHCCH25420x000	250
21	CAHCCH25421x000	250
22	CAHCCH25422x000	250
23	CAHCCH25423x000	250
24	CAHCCH25424x000	250

Ordering code

CAHC CH 254 xx x xxx
① ② ③ ④ ⑤ ⑥

- ① Type
- ② Product style
- ③ Pitch
- ④ Poles (02-24)
- ⑤ Color
- ⑥ Standard 000 or Custom XXX

Color

0 Black

Key Commercial data

Custom tariff number	8536901000
Country of origin	CN (China)

Mating with headers

CAPBSD254 Series

