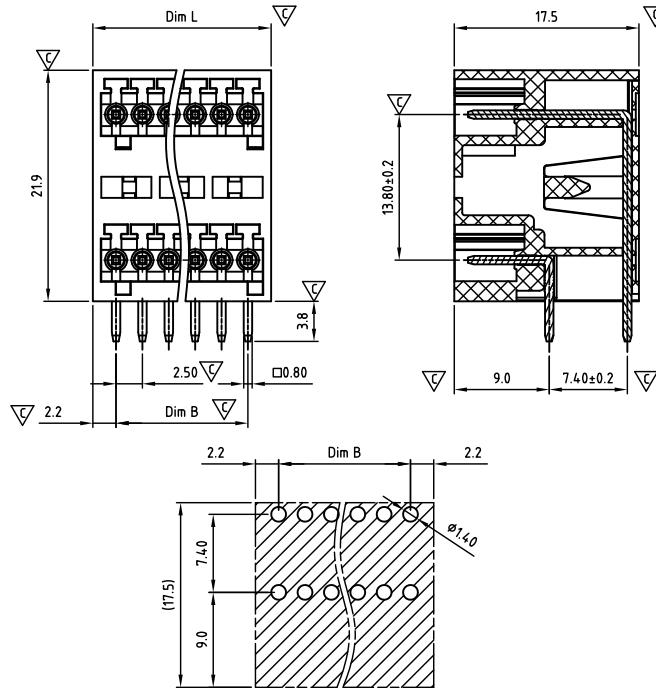




CAHAEH250-SERIES

Pitch 2,50mm

cULus E501953



P.C.B. LAYOUT

Critical dimension: ∇

Dim.L=(1/2P-1)x2.5+4.4

Dim.B=(1/2P-1)x2.5

P=Number of poles (02-24)

	Dim B	Dim L
0-30mm	+/- 0,15	+/- 0,20
over 30-60mm	+/- 0,20	+/- 0,25
over 60-90mm	+/- 0,25	+/- 0,30
over 90mm	+/- 0,30	+/- 0,40

Tolerance	
x.	+/- 0,50
x.x	+/- 0,30
x.xx	+/- 0,10
x°	+/- 1°

Units:mm

Technical data

Technical data in accordance with UL/cUL

	Use Group	B	C	D
Nominal voltage (V)	150	-	-	-
Nominal current (A)	4	-	-	-
Connection capacity(AWG)	-	-	-	-

Technical data in accordance with IEC

Rated insulation voltage at pollution degree 2 (V)	160
Rated current/conductor cross-section (A/mm ²)	4 / -
Solid/stranded(mm ²)	-
Surge voltage category/pollution degree	III / 3 III / 2 II / 2
Rated insulation voltage(V)	80 160 250
Rated surge voltage(kV)	1.5 2.5 2.5

General data

Flange nut thread	-
Flange nut tightening torque(Nm)	-
Insulation Withstanding Voltage	AC 1600 / 1min
Insulation Resistance	1000MΩ or more at DC500V
Using temperature range	-40°C-115°C
Soldering temperature	250±5°C/5s

Materials

Insulation material group	PA 66 I UL94 -V0
PIN	Copper, Tin plated
Flange nut	-
Borehole diameter/pin dimensions(mm)	1.4/0.8*0.8

Packing information

Poles	Order Number	SPQ
2*2	CAHAEH25004x000	270
2*3	CAHAEH25006x000	210
2*4	CAHAEH25008x000	165
2*5	CAHAEH25010x000	165
2*6	CAHAEH25012x000	165
2*7	CAHAEH25014x000	140
2*8	CAHAEH25016x000	120
2*9	CAHAEH25018x000	120
2*10	CAHAEH25020x000	95
2*11	CAHAEH25022x000	95
2*12	CAHAEH25024x000	90
2*13	CAHAEH25026x000	70
2*14	CAHAEH25028x000	70
2*15	CAHAEH25030x000	70
2*16	CAHAEH25032x000	60
2*17	CAHAEH25034x000	60
2*18	CAHAEH25036x000	60
2*19	CAHAEH25038x000	48
2*20	CAHAEH25040x000	48
2*21	CAHAEH25042x000	48
2*22	CAHAEH25044x000	48
2*23	CAHAEH25046x000	48
2*24	CAHAEH25048x000	42

Ordering code

CAHA EH 250 xx x xxx
 ① ② ③ ④ ⑤ ⑥

- ① Type
- ② Product style
- ③ Pitch
- ④ Poles (04-48)
- ⑤ Color
- ⑥ Standard 000 or Custom XXX

Color

0 Black	5 Green
1 Brown	6 Blue
2 Red	G Pale grey
3 Orange	8 Dark grey
4 Yellow	9 White

Key Commercial data

Custom tariff number	8536901000
Country of origin	CN (China)

Mating with headers

CAPASD250 Series

