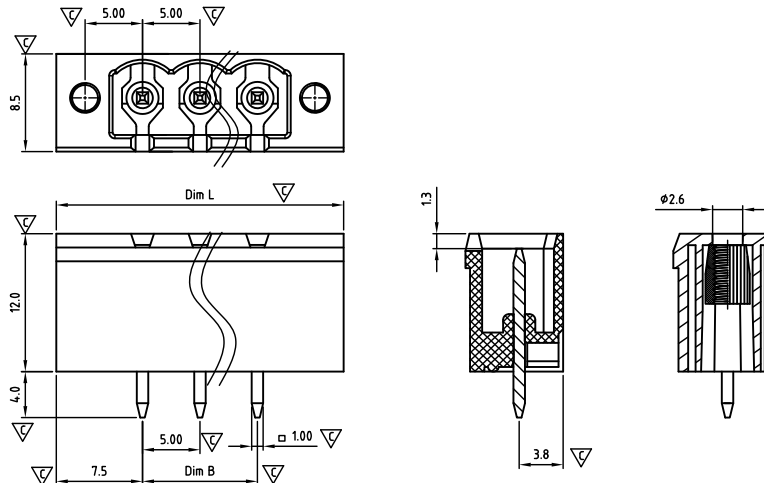




## CAHACV500-SERIES

**cULus** E501953



Critical dimension:  $\nabla$

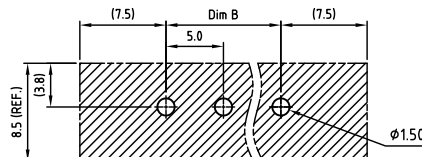
Dim.L=(P+2)x5.0

Dim.B=(P-1)x5.0

P=Number of poles (02-24)

|              | Dim B    | Dim L    |
|--------------|----------|----------|
| 0-30mm       | +/- 0,15 | +/- 0,20 |
| over 30-60mm | +/- 0,20 | +/- 0,25 |
| over 60-90mm | +/- 0,25 | +/- 0,30 |
| over 90mm    | +/- 0,30 | +/- 0,40 |

### RECOMMENDED PCB LAYOUT



| Tolerance |          |
|-----------|----------|
| x.        | +/- 0,50 |
| x.x       | +/- 0,30 |
| x.xx      | +/- 0,10 |
| x°        | +/- 1°   |

Units:mm

### Technical data

Technical data in accordance with UL/cUL

|                          | Use Group | B   | C | D   |
|--------------------------|-----------|-----|---|-----|
| Nominal voltage (V)      |           | 300 | - | 300 |
| Nominal current (A)      |           | 15  | - | 10  |
| Connection capacity(AWG) |           | -   | - | -   |

Technical data in accordance with IEC and VDE

|  |         |         |        |  |
|--|---------|---------|--------|--|
| Rated insulation voltage at pollution degree 2 (V)         |         | 320     |        |  |
| Rated current/conductor cross-section (A/mm <sup>2</sup> ) |         | 12 / -  |        |  |
| Solid/stranded(mm <sup>2</sup> )                           |         | -       |        |  |
| Surge voltage category/pollution degree                    | III / 3 | III / 2 | II / 2 |  |
| Rated insulation voltage(V)                                | 250     | 320     | 400    |  |
| Rated surge voltage(kV)                                    | 4       | 4       | 4      |  |

General data

|                                  |                          |
|----------------------------------|--------------------------|
| Flange nut thread                | M2.5                     |
| Flange nut tightening torque(Nm) | Max. 0.3                 |
| Insulation Withstanding Voltage  | AC 1600 / 1min           |
| Insulation Resistance            | 1000MΩ or more at DC500V |
| Using temperature range          | -40°C-115°C              |
| Soldering temperature            | 250±5°C/5s               |

Materials

|                                      |                    |
|--------------------------------------|--------------------|
| Insulation material group            | PA 66 I UL94 -V0   |
| PIN                                  | Copper, Tin plated |
| Flange nut                           | Brass              |
| Borehole diameter/pin dimensions(mm) | 1.6/1*1            |

### Packing information

| Poles | Order Number    | SPQ |
|-------|-----------------|-----|
| 2     | CAHACV50002x000 | 400 |
| 3     | CAHACV50003x000 | 300 |
| 4     | CAHACV50004x000 | 250 |
| 5     | CAHACV50005x000 | 250 |
| 6     | CAHACV50006x000 | 240 |
| 7     | CAHACV50007x000 | 200 |
| 8     | CAHACV50008x000 | 175 |
| 9     | CAHACV50009x000 | 160 |
| 10    | CAHACV50010x000 | 160 |
| 11    | CAHACV50011x000 | 150 |
| 12    | CAHACV50012x000 | 120 |
| 13    | CAHACV50013x000 | 115 |
| 14    | CAHACV50014x000 | 110 |
| 15    | CAHACV50015x000 | 100 |
| 16    | CAHACV50016x000 | 100 |
| 17    | CAHACV50017x000 | 90  |
| 18    | CAHACV50018x000 | 85  |
| 19    | CAHACV50019x000 | 85  |
| 20    | CAHACV50020x000 | 80  |
| 21    | CAHACV50021x000 | 80  |
| 22    | CAHACV50022x000 | 80  |
| 23    | CAHACV50023x000 | 50  |
| 24    | CAHACV50024x000 | 50  |

### Ordering code

CAHA CV 500 xx x xxx  
① ② ③ ④ ⑤ ⑥

- ① Type
- ② Product style
- ③ Pitch
- ④ Poles (02-24)
- ⑤ Color
- ⑥ Standard 000 or Custom XXX

Color

|          |             |
|----------|-------------|
| 0 Black  | 5 Green     |
| 1 Brown  | 6 Blue      |
| 2 Red    | G Pale grey |
| 3 Orange | 8 Dark grey |
| 4 Yellow | 9 White     |

### Key Commercial data

|                      |            |
|----------------------|------------|
| Custom tariff number | 8536901000 |
| Country of origin    | CN (China) |

### Mating with headers

CAMAFT500 Series



CAMAFD500 Series



CAMBFR500 Series



CAMBFW500 Series

