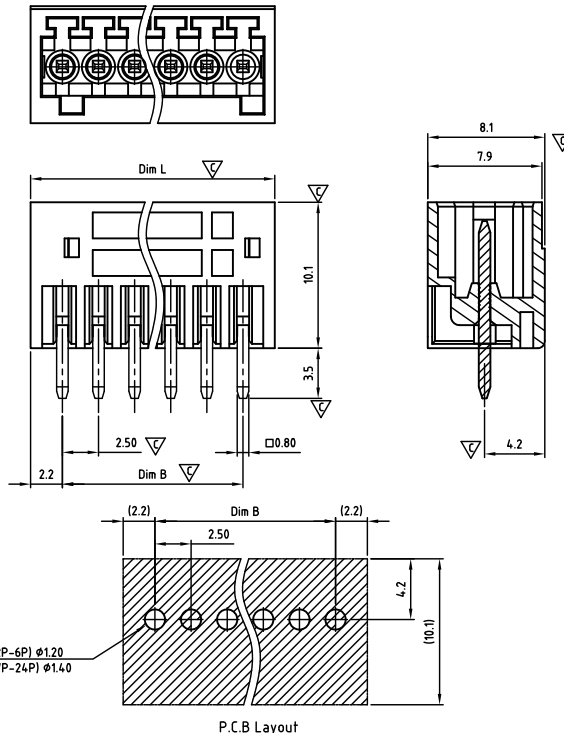




CAHABV250-SERIES

cULus E501953



Critical dimension: ∇

Dim.L= $P \times 2.5 + 1.9$

Dim.B=(P-1) $\times 2.5$

P=Number of poles (02-24)

	Dim B	Dim L
0-30mm	+/- 0,15	+/- 0,20
over 30-60mm	+/- 0,20	+/- 0,25
over 60-90mm	+/- 0,25	+/- 0,30
over 90mm	+/- 0,30	+/- 0,40

Tolerance	
x.	+/- 0,50
x.x	+/- 0,30
x.xx	+/- 0,10
x°	+/- 1°
	Units:mm

Technical data

Technical data in accordance with UL/CUL

	Use Group	B	C	D
Nominal voltage (V)	150	-	-	-
Nominal current (A)	4	-	-	-
Connection capacity (AWG)	-	-	-	-

Technical data in accordance with IEC

Rated insulation voltage at pollution degree 2 (V)	160
Rated current/conductor cross-section (A/mm ²)	4 / -
Solid/stranded(mm ²)	-
Surge voltage category/pollution degree	III / 3 III / 2 II / 2
Rated insulation voltage(V)	80 160 250
Rated surge voltage(kV)	1.5 2.5 2.5

General data

Flange nut thread	-
Flange nut tightening torque(Nm)	-
Insulation Withstanding Voltage	AC 1600 / 1min
Insulation Resistance	1000M Ω or more at DC500V
Using temperature range	-40°C-115°C
Soldering temperature	250 \pm 5°C/5s

Materials

Insulation material group	PA 66 I UL94 -V0
PIN	Copper, Tin plated
Flange nut	-
Borehole diameter/pin dimensions(mm)	1.4/0.8*0.8

Packing information

Poles	Order Number	SPQ
2	CAHABV25002x000	1300
3	CAHABV25003x000	1150
4	CAHABV25004x000	800
5	CAHABV25005x000	600
6	CAHABV25006x000	665
7	CAHABV25007x000	570
8	CAHABV25008x000	520
9	CAHABV25009x000	475
10	CAHABV25010x000	415
11	CAHABV25011x000	380
12	CAHABV25012x000	345
13	CAHABV25013x000	310
14	CAHABV25014x000	285
15	CAHABV25015x000	285
16	CAHABV25016x000	250
17	CAHABV25017x000	250
18	CAHABV25018x000	230
19	CAHABV25019x000	230
20	CAHABV25020x000	205
21	CAHABV25021x000	205
22	CAHABV25022x000	190
23	CAHABV25023x000	190
24	CAHABV25024x000	170

Ordering code

CAHA BV 250 xx x xxx
① ② ③ ④ ⑤ ⑥

- ① Type
- ② Product style
- ③ Pitch
- ④ Poles (02-24)
- ⑤ Color
- ⑥ Standard 000 or Custom XXX

Color

0 Black	5 Green
1 Brown	6 Blue
2 Red	G Pale grey
3 Orange	8 Dark grey
4 Yellow	9 White

Key Commercial data

Custom tariff number	8536901000
Country of origin	CN (China)

Mating with headers

CAPASD250 Series

