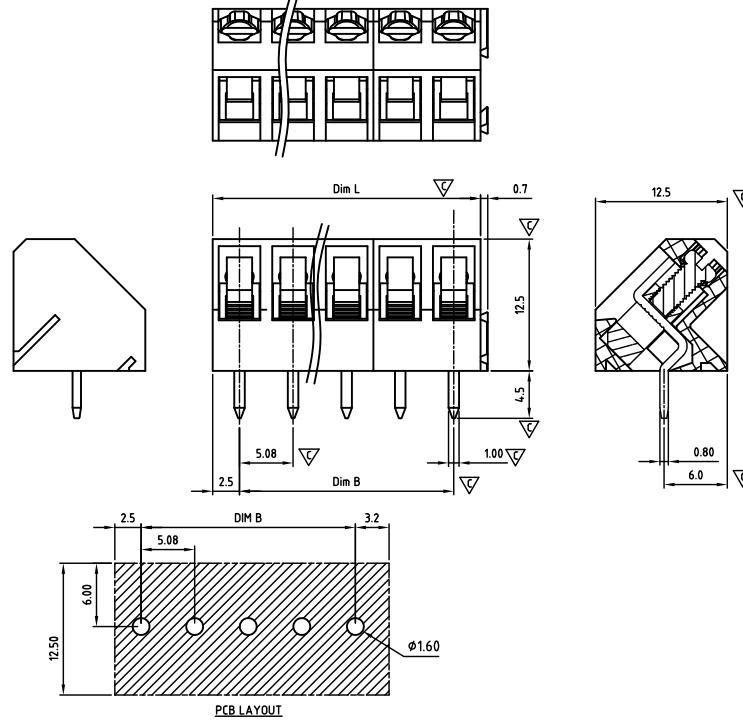




CAEHAM508-SERIES

cULus E501953



Critical dimension: ▽

Dim.L=Px5.08		
Dim.B=(P-1)x5.08		
P=Number of poles (02-24)		
	Dim B	Dim L
0-30mm	+/- 0,15	+/- 0,20
over 30-60mm	+/- 0,20	+/- 0,25
over 60-90mm	+/- 0,25	+/- 0,30
over 90mm	+/- 0,30	+/- 0,40

Tolerance	
x.	+/- 0,50
x.x	+/- 0,30
x.xx	+/- 0,10
x°	+/- 1°
Units:mm	

Technical data

Technical data in accordance with UL/CUL

	Use Group	B	C	D
Nominal voltage (V)	300	-	-	300
Nominal current (A)	15	-	-	10
Connection capacity(AWG)	24-12	-	-	24-12

Technical data in accordance with IEC

Rated insulation voltage at pollution degree 2 (V)	250		
Rated current/conductor cross-section (A/mm ²)	24 / 2.5		
Solid/stranded(mm ²)	0.5-2,5 / 0.5-2.5		
Surge voltage category/pollution degree	III / 3	III / 2	II / 2
Rated insulation voltage(V)	250	400	630
Rated surge voltage(kV)	4	4	4

General data

Stripping length(mm)	6-7
Screw thread	M2.5
Tightening torque(Nm)	0.40-0.45
Insulation Withstanding Voltage	AC 1600 / 1min
Insulation Resistance	1000MΩ or more at DC500V
Using temperature range	-40°C-115°C

Materials

Insulation material group	PA 66 I UL94 -V0
Contact	Brass, Tin plated
Cage	Brass, Ni plated
Screw	Steel, Zn plated

Packing information

Poles	Order Number	SPQ
2	CAEHAM50802x000	500
3	CAEHAM50803x000	350
4	CAEHAM50804x000	250
5	CAEHAM50805x000	200
6	CAEHAM50806x000	150
7	CAEHAM50807x000	150
8	CAEHAM50808x000	125
9	CAEHAM50809x000	110
10	CAEHAM50810x000	100
11	CAEHAM50811x000	100
12	CAEHAM50812x000	90
13	CAEHAM50813x000	64
14	CAEHAM50814x000	64
15	CAEHAM50815x000	64
16	CAEHAM50816x000	64
17	CAEHAM50817x000	64
18	CAEHAM50818x000	64
19	CAEHAM50819x000	60
20	CAEHAM50820x000	32
21	CAEHAM50821x000	32
22	CAEHAM50822x000	32
23	CAEHAM50823x000	32
24	CAEHAM50824x000	32

Ordering code

CAEH AM 508 xx x XXX
① ② ③ ④ ⑤ ⑥

- ① Type
- ② Product style
- ③ Pitch
- ④ Poles (02-24)
- ⑤ Color
- ⑥ Standard 000 or Custom XXX

Color

0 Black	5 Green
1 Brown	6 Blue
2 Red	G Pale grey
3 Orange	8 Dark grey
4 Yellow	9 White

Key Commercial data

Custom tariff number	8536901100
Country of origin	CN (China)

